

Wichita Stamp Club Newsletter



July 2021
July 16 World Snake Day

Volume 89, No. 7



In remembrance of **Neal Danielson** for his many contributions
to the Wichita Stamp Club and its Newsletter

Wichita Stamp Club
P. O. Box 1427
Wichita, KS 67201-1427

President: **Bob Cairns**
267-8745

CairnsBob@aol.com

Vice-President: **Ernie Webb**
ewebbo2@aol.com

Secretary: **Bernrd Frazier**
729-8607
berndfr@cox.net

Treasurer: **Bob Haines**
693-9021
Bobh67218@yahoo.com

Bid Board: **Lou Forster**
684-8242
lforster@cox.net

The Wichita Stamp Club Newsletter has won numerous awards from the American Philatelic Society as a publication of a local society. This is your Newsletter. Support it by submitting an article; words of wisdom; facts about a stamp or cover; an adlet or whatever you think might be of interest to other club members. The opinions expressed in the Newsletter are of the writer and not those of the officers or membership. WSC is a charter member of the American Philatelic Society and is also a member of the Oklahoma Philatelic Society and the American Topical Association. Meetings are held at the Alford Branch Library, 3447 Meridian, Wichita. Meetings begin at 6:00 pm and programs follow. Visitors are always welcome. The Wichita Stamp Club welcomes new members. Annual dues are \$10.00 for individuals and \$15.00 for families.

Newsletter Editor: **Jeff Lough** jeffydplaugh@gmail.com

Fellow **Members**, It is good to have the club reopened for meetings. It was especially nice to be able to get together and catch up with everyone at the June 2 social. Meetings have been temporarily moved to the 1st and 3rd Wednesdays at 6:00 pm at the Cessna Activities Center. This was necessary due to the unavailability of facilities to accommodate our normal schedule. I hope that we will be able to soon return to our normal meeting schedule. The first club auction of the year will be held Wednesday, June 16 at the Cessna Activities Center. Regular meetings will follow on July 7 and July 21. The July 7 meeting will feature a program by **Tom Hankins**. Further information on meetings and programs will be forthcoming. Please reserve the dates of August 20 and 21 for the Cessna Show. The club website (wichtastampclub.org) has been updated to include current details about the show. Stay safe and I hope to see you soon. **Bob Cairns**

We will be conforming with city, county, state, and CDC protocols in effect for Covid-19. Members are asked to complete their immunizations and two week waiting period prior to attending club meetings. Even with the immunization requirement, some members may still not yet feel safe meeting. This is a decision each member must make individually.

Club Meetings

Wednesday, **June 16** at 6 pm at the Cessna Activity. **Club Auction** with **Ralph Lott** as auctioneer.

Wednesday, **July 7** at 6 pm at the Cessna Activity Center. **Tom Hankins** will present “The U.S. Post Office,” a snapshot of a few important events in the history of the Post Office, as seen through postally used covers. Events such as P.O. buildings openings and closings, the last run of an R.P.O., the 1970’s mailing process, the size of P.O. buildings, and early Air Mail events will be covered. These were periods of history with good customer service.

Wednesday, **July 21** at 6 pm at the Cessna Activity Center. **Jeff Lough** leads a discussion of some of the variety of philatelic literature: 135 year old periodicals as well as some current non-general periodicals, specialized albums, handbooks, examples of Scott catalogs from the middle of the 19th century to 1950 and a few specialized dealer publications.

UPCOMING REGIONAL STAMP EVENTS

Louis Forster

2021

June 18-19

KNA Coin & Stamp Show

Cessna Activity Center 2744 George Washington Blvd
Wichita, Kansas
Friday 10 - 5 & Saturday 9 – 4

August 20-21

Wichita Stamp Club Show

Cessna Activity Center 2744 George Washington Blvd
Wichita, Kansas
Friday 9 - 5 & Saturday 9 – 4

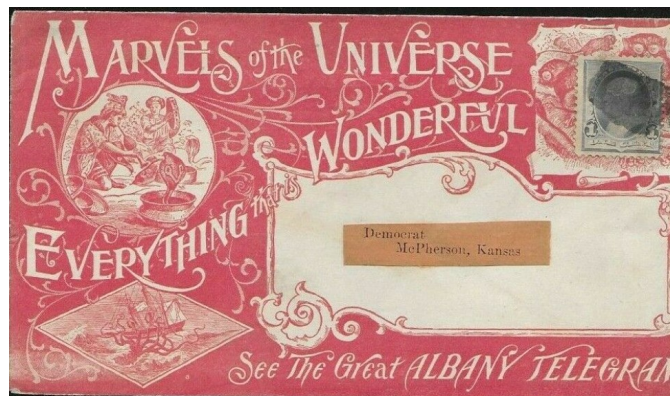
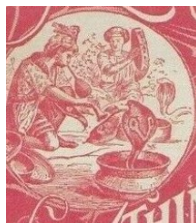
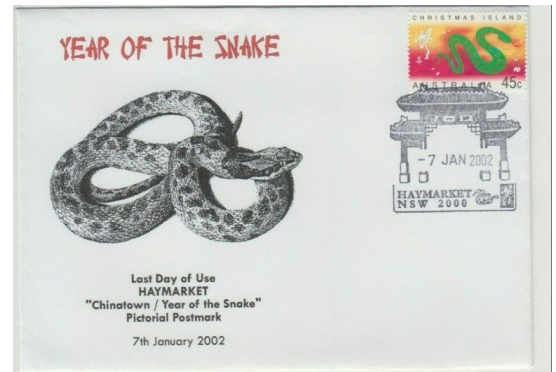
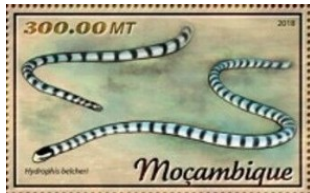
Summer Social

Thanks to **Bernd Frazer** for helping with the photographs. A healthy and hungry crowd of 25 to 30 members and their families attended the Social on June 2nd eating chicken accompanied by lots of fixins and deserts. And thanks to **Bob Haines** for bringing the fried birds. The officers all helped put on a fine event. It was good to see a lot of old friends and meet a couple new ones. Lots for the upcoming Club auction were on display.



World Snake Day

by **Jeff Lough**



Snakes are elongated carnivorous reptiles whose internal temperature moderates to that of the surrounding environment. Snakes are found on all continents except Antarctica and on most other large islands, exceptions being Ireland, Iceland, Greenland, Hawaii and New Zealand. They range in size from the 4 inch Barbados threadsnake to the reticulated python that has been known to reach 23 feet in length. Philatelic items such as stamps and covers have been among the objects celebrating or picturing snakes. Besides stamps from around the world, pictured are covers showing a snake charmer on an old advertising cover and a 2002 Christmas Island cover with a Year of the Snake commemorative, that had served as part of the Chinese New Year celebrations around the world.

Geary County's Postmarks and Postal Services

by Jeff Lough



Figure 1



Figure 2

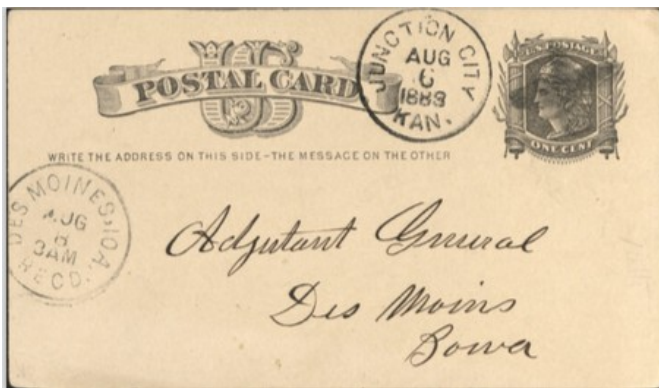


Figure 3

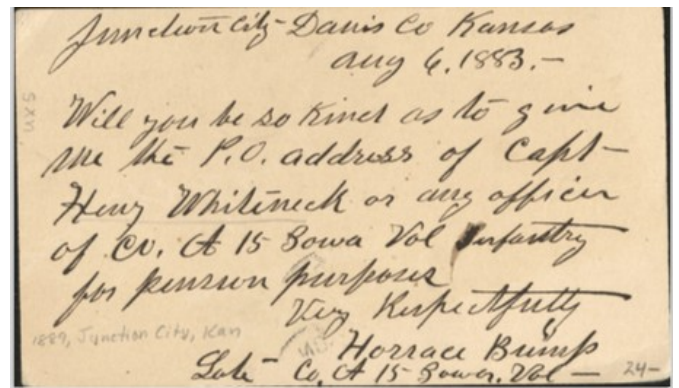


Figure 4

In 1883 **Junction City** was in Davis County, named in the Kansas Territorial period after President Buchanan's Secretary of War, Jefferson Davis. He was, of course, later the President of the Confederate States of America. In 1888 the Republican Kansas legislature changed the name of the county to Geary, after a Territorial governor who had been the postmaster of San Francisco and that city's first mayor. He was also a Union army general during the Civil War. A photo of Junction City's post office in 1903 is found as Figure 1. A late 19th century Guilford map of Geary County is provided in Figure 2.

The August 6, 1883 postal card (Figures 3 and 4) was from a Civil War veteran from Junction City in "Davis County, writing for documentary assistance from the Iowa state adjutant general as a member of Company A of the 15th Iowa Volunteer Infantry of the Civil War, trying to establish his eligibility for veterans benefits. An earlier very rare Junction City postmark is found as Figure 5. It is dated September 25th with an unknown year by a simple cds also acting as the killer/cancellation device.

As shown on the Guilford map, **Wreford** was a stop on the Missouri, Kansas and Texas (KATY) railroad running to the southeast from Junction City to Council Grove in Morris County to the south. H. C. McCarty, a Civil War veteran, had opened a general store in a two-story building. His family lived in the upper story of the store, which also served as the post office and the telephone exchange. McCarty named the community “Wreford” after his bother who died during the Civil War..



Figure 5

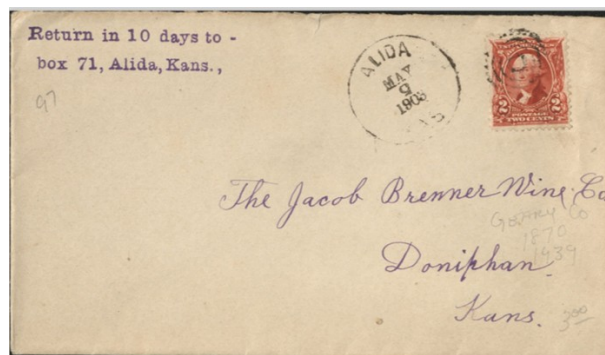


Figure 6

Alida was located in Smoky Hill Township at the point where Curtis Creek joins the Republican River. The area’s first settlers claimed land in 1858, but it was after the Civil War before the community really began to prosper. Mrs. Royal Clemons, wife of the first postmaster named Alida. They had come to the area from New York in 1868. When the post office was established in 1870, it was located on, or in, Mrs. Clemons’ chest of drawers. Because of this she was allowed to choose a name for the little town, and in a spell of homesickness, she selected “Alida,” the name of one of her childhood friends back in New York. The May 9, 1903 Alida circular date stamp (Figure 6) is accompanied by a 4-circle target killer cancelling the Scott # 301 which was a definitive bearing George Washington’s portrait.

One of the settlements along the Republican River in Geary County was the town of **Bechelder**. It was incorporated by an act of the Kansas Territorial Legislature in 1858. The accompanying cover, Figure 7, was sent during this era, with a manuscript Bechelder cancellation and killer on the Civil War era Scott # 94. Ten years later, in 1868, the community was renamed “Milford” the urgent request of the town postmaster who was annoyed at the continual misspelling of the name “Bechelder.” A Milford precanceled penny Prexie is offered as Figure 8.

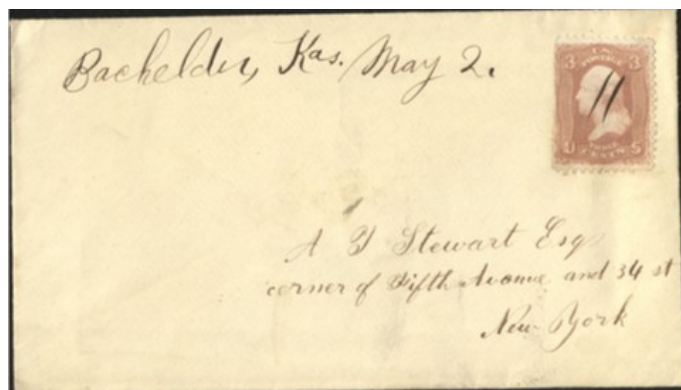


Figure 7



Figure 8

One would be rather lax to omit **Fort Riley** as part of Geary County. The fort was established during the pre-Civil War days to provide armed escorts for those traveling west along the Smoky Hill River. It has served notably during all the armed conflicts that the U.S. has since found itself. It is suitable that a military location is served by a cover (Figure 9) having its two Washington-Franklin definitives cancelled with a **flag machine cancellation** with a date near to the time that the post served as a major training facility for World War I GIs and the point from which the Spanish Flu spread after being introduced by farm boys from the western Kansas areas in Haskell County.

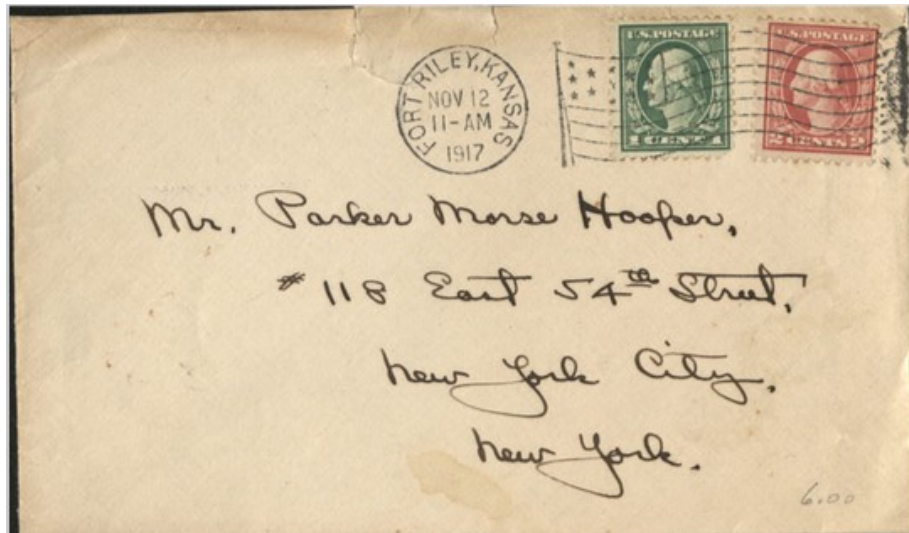


Figure 9

Stamp Collecting of London in 1919 had a contest for the completion of a limerick

“There was a collector of Brum,
 Who thought he would make things hum;
 So he went to a shop,
 And before he could stop,
 _____.”

The Hobbyist of November, 1910 reported that “A new disease has been discovered in Missouri called ‘paralysis of the tongue.’ As the epidemic is found only among stamp collectors, cheap hinges have the blame.”

The Early Envelope

The Early Envelope was part of a series of children’s books read from the early 2000s. The cover of the book (Figure 1) shows an envelope with three definitive stamps. The story is about a boy named Dink who gets letters addressed to D. Duncan. The letters don’t make any sense to him since they all start with “Dear Doris.” In the course of the story, the boy and his friends decipher a message: “Jenny hidden on fifth envelope.” Unlike the other envelopes that contains a letter, the fifth envelope has three stamps as postage but no letter inside. (Figure 2) The kids steam off the three definitive stamps to reveal a stamp with an upside-down air plane (Figure 3). Hidden under the stamps of this envelope is a very valuable stamp known to stamp collectors as U. S. Scott C3a. A quick trip to the library reveals that they have found a very valuable stamp. Further investigation revealed that the stamp was stolen and the story tells how the stamp had been found while emptying a vacuum cleaner. After several adventures with “the bad guys” who are trying to retrieve the rare stamp, the story ends with the rightful owner claiming the stamp.

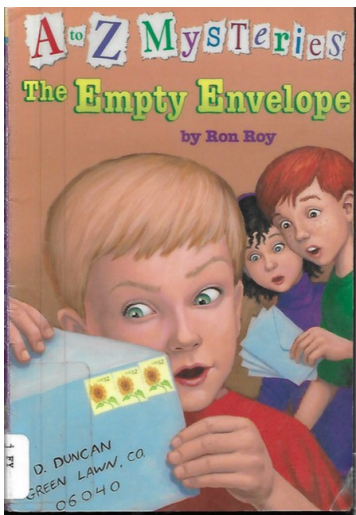


Figure 1

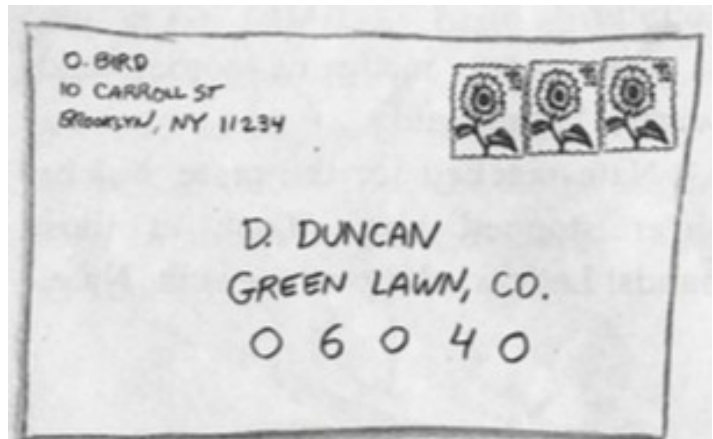


Figure 2



Figure 3

Combining Two Favorite Pastimes--Food and Philately

by Jeff Lough

It's snack time. Time to harvest and appreciate the stamps that tell stories about food. Although there may be bugs, mice, Hoovers and even dogs that have eaten stamps, very few people consume them. There have been a number of stamps with tasty gum or that smelled good enough to eat but the easiest way to bridge the gap is to study those stamps related to food. There are a variety of ways to look at food from a philatelic perspective. One way is to take a look at the steps that materials go through to reach the table.

First, food has to be harvested. In 1989 Tokelau issued a set of stamps picturing various aspects of the gathering and storage of coconuts and fish in a Pacific Islander's context. These two types of foods are practically the only ones locally available. A first day cover with these stamps is shown as Figure 1. A grain harvest is demonstrated on one of the series of comparatively recently issued U.S. flag stamps (Figure 2).



Figure 1



Figure 2

Raw agricultural products can be found on many stamps. After achieving independence from France in 1959, the Republic of Guinea overprinted a colonial stamp that celebrated the banana (Scott # 169, Figure 3). Until it became independent Guinea was a major banana exporter. Bananas originated in West Africa and were introduced to much of the rest of the world by the Portuguese in the early 16th century. Most bananas in the world are grown by subsistence and small landowning producers. They are a source of potassium and starch.



Figure 3

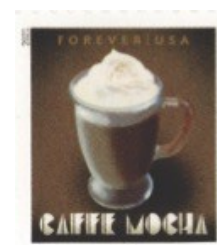


Figure 4

Drinks are one of the food groupings. Sustenance derives from chocolate and coffee. The U. S. recently issued a set of definitive stamps celebrating popular coffee drinks. The mocha stamp (Figure 4) is of a drink incorporating both coffee and chocolate.

Raw materials have to be purchased before appearing on the table. The 2017 Singapore stamp (Figure 5) shows a fish and veggie market. Markets are common across much of the world as a way for producers to have a more direct link to consumers.



Figure 5



Figure 6

The earliest farmers' markets are said to have existed in Egypt over 5,000 years ago. Farmers along the Nile River would bring fresh goods to sell at one collective location. The idea persisted throughout history and spread across the globe. In the United States, informal farmers' markets were likely present as early as the Jamestown Settlement.

Figure 6 depicts a colorful pastry made on one of the parts of Portugal to the west in the Atlantic Ocean. Off the Portuguese coast lies the Madeira islands from which the edible dolls shown in Figure 6 derive. The Bonecas de Massa do Canico are an edible cookie or cake-like confection made of flour, water, yeast, coloring from eggs or tangerines and a little fine salt. They are ornamented with red and blue silk or tissue paper with banana seeds or chives for eye. They serve more as ornaments than as food but are eaten. Common forms include male and female figures representing fertility and a rooster that symbolizes vigilance and work.

The Gastronomy on Stamps Study Unit of the American Topical Association provides a convenient and rich source of information and opportunities for those with an interest in collecting stamps and other philatelic items related to food. The unit publishes a journal, *The Philatelic Gourmet*, and will have an active presence at the Great American Stamp Show in Chicago later this summer.

Mary Katherine Goddard, the woman who signed the Declaration of Independence, was Baltimore's postmaster. She was likely the United States government's first female employee. At the bottom of a broadside, issued in January, 1777, she too signed the Declaration: "Baltimore, in Maryland: Printed by Mary Katherine Goddard."

