

Wichita Stamp Club Newsletter



Vol. 85, No. 2, February 2017

Neal E. Danielson
Editor



"Go Fly A Stamp"



Click on a link below in order to go directly to the article

[Miscellanea](#)

Persian messaging, early commemorative, German Liberty Bell

[Don't Sweat the Small Stuff](#)

A little beauty with Warren Hardy on the cover

[Travel Kansas](#)

A visit to Atlanta, Kansas

[Rush County Part 3](#)

[Philatelic Areas of Mozambique](#)

[The Language of Stamps](#)

[A Philatelic Crossword Puzzle](#)

[Private Western Canadian Air Post Stamps/Labels](#)

[Go to WSC Home Page](#)

The Persians used living letters in their early correspondence. Herodotus wrote that they shaved the heads of messengers and impressed or branded the “writing” on their scalps. Then they were locked away until the hair had grown again and concealed the message. The runners were then sent off on their journeys. A messenger on reaching his destination was again shaved and the epistle was made plain to the eyes of the beholder.

In 1871 the Peruvian government issued what has often been considered to be the first commemorative stamp, Scott number 19, celebrating the Trencito railroad route. This route ran from the capital Lima to the port of El Callao on the coast near the capital 18 km away. Before the railroad was built and towards the end of the Spanish empire in South America virtually all goods produced in Peru, Bolivia and Argentina were carried over the Andes by mule to Callao, to be shipped to Panama, carried overland and then transported on to Spain via Cuba. The port was completely destroyed by a tsunami caused by an earthquake in 1826. On the stamp itself a train lies at the top of the vignette with Peru's coat of arms below. Chorrillos, the word along the left is a popular nearby beach.



In 1950 a branch of the Central Intelligence Agency had a 15 ton bell forged and given to the city of Berlin as a symbol of the struggle against Communism. It is located in the tower of Rathaus Schoneberg, a former city hall. The bell carries the inscription: “*That this world under God shall have a new birth of freedom.*” derived from the phrasing of the Gettysburg Address. The “Freedom Bell” is rung daily at noon. West Germany issued three very similar sets of definitives to celebrate the bell. The first series, issued in 1951, had the bell's clapper to the left and had no designer name below the bottom edge of the stamp design. The series was re-engraved and reissued in 1952. This group of stamps had the clapper to the right, as with the blue stamp to the right above and had the designer's name below the stamp design. Later in 1952 the stamps were again reissued and the clapper was in the middle and no designer name was below the stamp designer, as per the red stamp in the middle above. Burma and Belgium both issued supportive commemoratives. The Belgian one is to the far right.

[Return to February Contents](#)

[Go to WSC Home Page](#)

DON'T SWEAT THE SMALL STUFF by Neal E. Danielson

This is the 81st in a series of articles relating to small post cards and small covers so if you have any in your collection that you would like to share please let us know.

This Small Stuff comes to you by way of Holton, Kansas thanks to **Rex Chrisco**. This Small Stuff measures 4 3/16 inch by 2 7/8 inch and is franked with a 2¢ Warren G. Harding stamp (Scott #610) issued Sept. 1, 1923 and tied to the cover with a bulls-eye sock-it-on-the-nose cancel with a circular-date-stamp postmarked from Holton, Kansas on February 7, possible in 1924 based on the issued date of the stamp (Figure 1). The Postmaster at the time was more than likely William T. Beck who was appointed Acting Postmaster August 1, 1923 and became Postmaster on December 18, 1923 and would serve in this capacity until January 8, 1934.



Figure 2

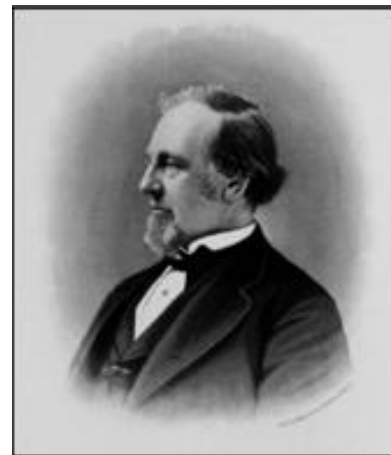


Figure 1
Edward Dwight Holton

Figure 2 Edward D



Figure 3

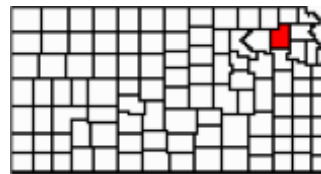


Figure 4

Settlers from Milwaukee, Wisconsin in May, 1856 initiated the settlement site of Holton, arriving in a wagon train of six wagons; each drawn by a yoke of two oxen. Arriving as Free Stater's, thanks to the efforts of Edward Dwight Holton (Figure 2), a Milwaukee Abolitionist who spearheaded

the Kansas Society of Milwaukee that funded the settlers journey. The Wagon Train first met up with General James H. Lane and his group of 200 men at Nebraska City, Nebraska, which is the location for rendezvous for Free State men. The Train would follow "Jim Lane Road" about 30 miles to enter Kansas Territory. They arrived about 2 ½ miles west of the future location of Holton near Elk Creek. They would cut timber to build a bridge in order to cross the creek and established a camp where Holton's Central School would be built. The settlers liked the two streams and the pleasant grassy hills and would name the two creeks Banner Creek and Elk Creek. The settlers were organized as a company and a civil engineer was commissioned to survey the site for the settlement. They named the new settlement in honor of Holton. Holton is located in Jackson County Kansas (Figures 3 & 4). A 20 by 20 foot log house was constructed that could be used for a fort and was named Jim Lane's Fort. In the spring of 1857, J. B. Ingerson surveyed the town site lots. The original name of the County was Calhoun County until 1859 when the name changed to Jackson County and Holton was officially named the County Seat in 1858. The Holton Post Office was first established in the town of Colhoun in Calhoun County August 5, 1858. A frame building was constructed and served as the first courthouse on the east side of the square and a new courthouse was built in the center of the square in 1872 and would remain until the current courthouse was built in 1921. In 1859 the town of Holton had several residential dwellings; a mercantile store, a blacksmith shop and a steam saw mill, no doubt drawing water from one or both Banner Creek and Elk Creek. In 1879 a decision was made to form a University in Holton at the encouragement of Jackson County residents.

The school was funded by a former resident, A. C. Campbell, who subsequently moved to Utah, thus the school was called Campbell University. Campbell merged with Lane University in 1902 and became Campbell College and eventually merged with the Kansas City University in 1913 and ended up closing in 1933. Holton still had a nice High School (Figure 5) and a large State Bank that also was home to Insurance companies (Figure 6). The town celebrated Armistice Day in 1918 (Figure 7) in an old photo that presents a sampling of the hustle and bustle of the town folks.

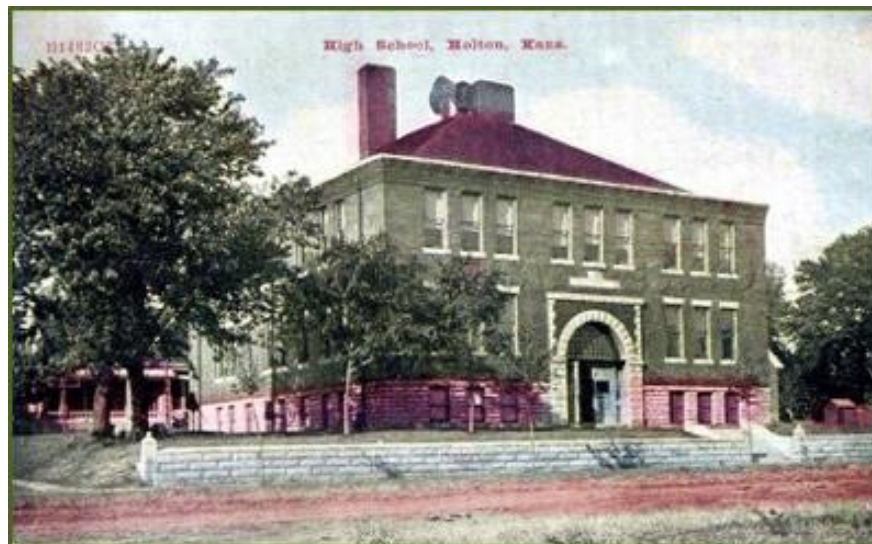


Figure 5
Holton High School



Figure 6
Holton Bank Building

istice



Figure 7
Armistice Day

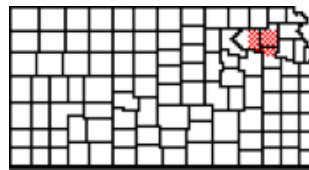


Figure 8

Originally Jackson County was established as Calhoun County on August 25, 1855 by the Kansas Territorial Government and named in honor of John C. Calhoun (1782-1850), statesman, U. S. Senator from South Carolina and Vice-President of the United States. The Honorable Calhoun was the first Surveyor-General of Kansas and Nebraska and appointed in 1854 as register of the land offices. He was in favor of Kansas becoming a slave state and a member of the Lecompton constitutional convention. Calhoun County initially comprised approximately 1,140 square miles north of the Kansas River (Figure 8), with Riley County to the west, Nemaha and Brown on the north, and Jefferson and Atchison on the east. In 1857 the west boundary was moved eleven miles east with a one mile wide by ten miles long strip from Jefferson County as shown in the Kansas County Map Figure 8. See Figure 4 for end results of these changes.

The County was formally organized by its Commissioners and the first official act was to establish a site that would be a voting place for the election of delegates to Congress; the second was a resolution to build a courthouse in the town of Calhoun “out of brick”. However on May 19, 1856 that resolution was rescinded and a two stories high small frame building was constructed out of native logs. Once the Post Office was lost in Calhoun to Holton the town soon faded into oblivion.

The Prairie Band Potawatomi Indian Reservation composes about 18.5 % in the center of the County (Figures 9 & 10). The Potawatomi originally came from a location in the Great Lakes area, but were forced to move westward due to Europeans settling in their land. The Reservation is composed of land in four different Townships—Lincoln, Banner, Franklin and Grant.



Figure 9



Figure 10

[Return to February Contents](#)

[Go to WSC Home Page](#)

The Cornerstone Church, Prairie View United Methodist Church, and Timber Creek Friends Church provide for the spiritual needs of the community. The Timber Creek Wildlife Adventures Company provides deer, turkey, native quail and waterfowl hunting on 2000 acres of family owned and operated farm and ranch land. Man-made ponds offer fishing opportunities.

The community has a major celebrations and get-togethers on an annual basis at the Labor Day Festival, the Atlanta Fireman’s Auxillary Chicken Noodle Dinner in April; the National Night Out celebration in October; and their annual Atlanta Christmas event in December

Cowley County has 18 stone arch bridges, several located near Atlanta, Kansas: the Timber Creek Bridge (Figure 4) built in 1908 back in the dirt road era; the Fox Bridge built in 1910; and Fromm Bridge, built in 1917. These three stone bridges are close to Atlanta; others are located near Winfield and other parts of Cowley County. All but one bridge was built prior to 1920 (one built in 1935). The majority of the stone arch bridges are located on private land and require land owner permission to walk around. Most are on public roads that you can drive on but one should not get out of the car and walk around. You can go to Cowley County website, Winfield website or the Atlanta website and find a variety of photos and maps.



Figure 4
Timber Creek Bridge

It's February and the month to enjoy Valentine’s Day. It was also enjoyed back in 1925. An Atlanta, Kansas-postmarked Valentine Post Card dated Feb 13, 1925 franked with a 1¢ Benjamin Franklin stamp (Scott #552) and tied to the card with a circular-date-stamp, carries a Valentine Greeting from May and addressed to Miss Hazel Meeks of Latham, Kansas. The picture side of the post card (Figure 6) shows two young ladies looking at an apparent Valentine from the one lady's beau with a Valentine greeting: *“I’m offering my heart to you, I never will regret it: Best snatch it quickly, Lady Fair, or someone else may get it.”*



Figure 5



Figure 6

Latham is a city in Butler County, Kansas that was laid out in 1885 and was named after a railroad official, Latham Young. The post office was opened in Bodock, with George Sherar serving as Postmaster, appointed Aug. 21, 1883 when the office opened and served until it was moved to Latham Oct. 6, 1885 with Daniel N. Kinzy serving as Postmaster. At the time the Valentine card arrived in Latham, William E. Ferguson was serving as Postmaster being appointed to the position March 13, 1922 and serving until June 25, 1936. The post office is still operating but is managed by the Postmaster out of Douglass, Kansas since Nov. 1, 2014.

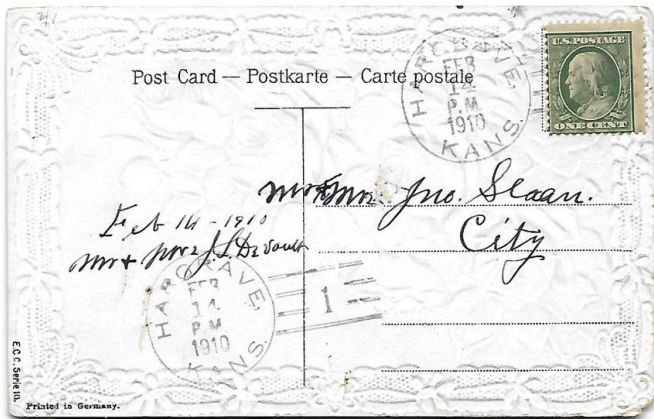
[Return to February Contents](#)

[Go to WSC Home Page](#)

Rush County Part 3 by *Jeff Lough*

Several small post offices were established in the western part of Rush County. The Howe post office, which operated from 1882 until 1886, was three miles east of Nekoma, not far from La Crosse, the county seat. West Point post office (1876 – 1894) was four miles north of Nekoma. The Flavius post office, about six miles southwest of Nekoma ran from 1886 until 1908. Its postmasters, P. A. Wright and Margaret Williams also provided nearby settlers with an opportunity to buy groceries. Harmony post office was located about ten miles south at the Pfenninger home. They received their mail from a post office located in a dug-out on the present John West farm. The Harmony post office later moved into John Felch's home on June 23, 1890 with Mr. Felch serving as postmaster. The post office later moved to the home of neighbor-postmaster John Beckman and then to the Elmer Miller store where Mr. Miller and later Ada Ream, Martin Delaney, One Mills, Nora Mills and Mrs. Vernon Felder were postmasters.

The **Hargrave** post office was established April 26, 1880 and was finally closed on April 30, 1950 with a couple closings in between, including one that lasted 14 years in the early 20th century. Hargrave was first called Mills Station by the Missouri Pacific Railroad but the name was changed to Hargrave by 1890 to honor a local settler and teacher, John Hargrave. All that remains of Hargrave is an elevator and a home.



A picture post card with Scott Number 331 cancelled by a 4 bar Doane



Hargrave grain elevator



A simple circular date postmark with a deteriorated cork killer cancels this Scott Number U358



The McCracken post office is to the right with the bluish top.

McCracken's nearby-first post office was known as Keimfield. The city and post office of McCracken was established in 1886. Sherrod W. Dutton served as the first postmaster. McCracken received its name for J. D. McCracken, one of the town's founders and the person responsible for having the Northern Pacific Railroad built through town. A fire in 1905 destroyed half the downtown. The movie *Paper Moon* starring Tatum O'Neal and Ryan O'Neal was made partially in McCracken as well as in other towns in the Hays area and in the far northeastern Kansas area around White Cloud in Doniphan County. Nearby shale quarries produced "wonder mud" that was widely used by drilling companies throughout the United States.



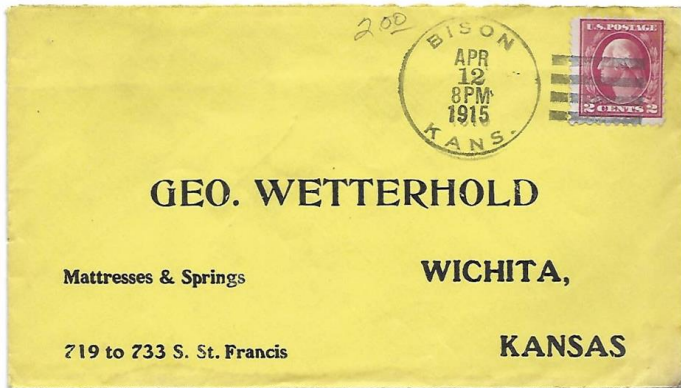
Faculty of the Entre Nous College northeast of McCracken



All that remains of Entre Nous College

Edward R. Barnard established a college with six other teachers about five miles northeast of McCracken. Mr. Barnard is in the middle of the front row in the photo above. A classical course of study that included Natural Philosophy (physics and chemistry), Latin, Greek, rhetoric, physical education, and English language arts was provided. The neighboring families had a very high regard for the college but it had no long-lasting financial foundation and disappeared in a couple years.

The **Bison** area was first homesteaded in 1876 on the Missouri Pacific Railroad. The post office was established May 7, 1888 with Samuel Rothweler the first postmaster. The town was platted in 1888 and incorporated 1912. The first proposed name for the town, Buffalo, was rejected by the post office since there was already a Buffalo, Kansas in Wilson County in southeast Kansas. The town officials then changed their request to Bison. It is in the middle of a natural gas field that provides helium. What did the buffalo say to his son when he was going to college? Bye Son.



The Scott Number 425 is cancelled by a 4-bar Doane cancel.



Bison's current post office

Otis, the last community to be covered in Rush county was founded in 1886 by a Union army major who named it in honor of his son Otis, who had been killed in the Civil War. Harry R. Johns was named the postmaster when the post office was established August 12, 1887. Many Volga Germans settled in this part of southeastern Rush County as they had in the north central and northeastern parts. A helium plant was built in Otis in 1964.



Otis Post Office



A barrel-type duplex hand stamp cancels Scott Number 805

conscripted labor on its plantations and gathered taxes. Rebellions against the forced labor/ slavery contributed to rebellions in 1902 and 1917. The Kingdom of Portugal was required to provide military forces to put down the rebellions. The major city of this area is Beira. The Portuguese Crown Prince carried the title Prince of Beira, a city in Portugal. Crown Prince Felipe was the first Portuguese royal family member to visit Mozambique, and the capital city of the area was named in honor of this event and the Prince. Figure 2 depicts a scene from this major colonial seaport. Figure 3 is one of a set of colorful definitives issued to celebrate the return of sovereignty to Portugal after a long period of forced union with Spain.

The Company of Nyassa

The Company of Nyassa was founded by Bernard Daupais, a merchant from Lisbon, but the Nyassa Company was owned by British and French interests. Nyassa was named for the great Lake Nyassa, as was the British colony of Nyasaland just to the West. The company was granted a charter by the Portuguese government and was officially incorporated in March 1893. The territory of the Nyassa Company covered the north of Mozambique, above the Lurio River.

Page 10

A variety of stamps were issued by the Company. Figure 4 depicts one of these. The owners of the Company of Nyassa was unable to fulfill its obligations and it lost its concession. The Kingdom of Portugal took over the management of the area and changed it into a military administered colony. Several colorful sets of stamps were issued. These included a subset of inverted stamps, of which a reported 1,000 each of the denominations in the 1901 set which were printed in 1903 and designed to appeal to philatelic interest. One of these is shown in Figure 5. At one point the colony ran short of some values of stamps and other values were overprinted to provide the necessary stamps. Figure 6 is an example of this. Later when the King was assassinated and the first Portuguese republic was established many stamps were overprinted "Republica" as shown in Figure 7. The 10r value from the series is mentioned in the novel *Molloy* by Samuel Beckett in which the narrator writes : "*I put down the tray and looked for a few stamps at random. The Togo one mark carmine with the pretty boat, the Nyassa 1901 ten reis, and several others. I was very fond of the Nyassa. It was green and showed a giraffe grazing at the top of a palm-tree.*"



Figure 4



Figure 5



Figure 6



Figure 7

The areas of Tete and Quelimane lay just to the south of the Nyassa area. They were important since the huge Zambezi River passed through the region. Extensive plantations were established along either side of the river and back into the savannas and mountain-forests on either side of the river. At times British East African Company postal operatives handled mail in this region. Separate colonial administrations were set up for the southeastern more plains-like area of Tete and the the more rain forest area of Quelimane. Examples of the stamps issued by these entities are shown below. The two and a half centavo Tete definitive below, Figure 8, shows the classical Roman goddess Ceres, goddess of agriculture and motherly love on a Republican issue.



Figure 8



Figure 9



Figure 10

The stamp above in the center shows a Portuguese China/ Macau stamp overprinted to be used in Quelimane (Figure 9). Quelimane also used a series of definitives similar to the Tete issue. These entities were later incorporated into an entity called Zambezia which was more directly controlled by the Portuguese central government. A Zambezia stamp lies to the right above (Figure 10.) It portrays King Carlos II and is first overprinted in order to show it was a provisional stamp while the new government was being organized and later was overprinted in red to show that the government in Portugal was the first Portuguese republic.



Figure 11



Figure 12

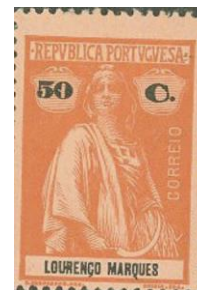


Figure 13

The Mozambique Colony, not to be confused with the Mozambique Company or the later country of Mozambique, was to the south of the Zambezia Colony. It was another military district that was occupied by Roman Catholic missionaries and a variety of plantation owners. The stamp depicting a Portuguese military leader was issued by the Mozambique Colony. To the right is a definitive from the colony of Inhambine.

Inhambane was the southernmost port used by Arabs for slave trading. It was visited by the early great Portuguese explorer, Vasco da Gama in 1498, who claimed Inhambane By for the Portugal. The Portuguese established a trading pot in 1543. It is a primary producer of the world's cashews. The Inhambane definitive shows King Carlos of Portugal.

Lorenco Marques is the large city and surrounding area at the far southern tip of Mozambique. It was named for a 16th century Portuguese explorer and trader of the region and has been the capital of modern Mozambique, now called Maputo.



Figure 14
Kionga Stamp



Figure 15
Map of Kionga in the northeast of Mozambique

On 28 June 1919, the Treaty of Versailles transferred the Kionga Triangle, a 1,000 km² (390 sq mi) territory south of the Rovuma River in the far northeastern part of Mozambique from German East Africa to Mozambique. Kionga had been the site of a German navy base. It was part of one of Germany's lost colonies are lost territories that would contribute to growing postwar grief. The area northwest became British East Africa and later Tanganyika and then modern Tanzania when it was combined with Zanzibar.

The stamp to the right is representative of the colorful stamps issued by the contemporary independent country of Mozambique. This stamp, issued in 1977 has a central motif reminiscent of the Marxist hammer and sickle except we find a hammer and axe celebrating May Day, the Marxist version of Labor Day. Mozambique has had a continuing civil war since gaining its independence.



The Language of Stamps

Some people are familiar with the Language of Flowers. In Victorian times flowers were often sent to convey messages. Even today roses still represent love and white flowers, a sense of purity. However few will be aware of the Language of Stamps. Many letters posted in the late nineteenth and early twentieth century had stamps affixed to envelopes and picture postcards in all sorts of odd positions and angles. This was due to the development in England of a 'language of stamps,' which soon spread around the world. The position of the stamp on the envelope was supposed to relay a message to the receiver. I imagine that people who lived on the edge of society found this a convenient way of expressing their feelings. I wonder, too, if spies or criminals had stamp languages of their own...

The problem of postmarking the stamps placed on various parts of the envelope finally became so great, that postal administrations of the world introduced regulations requiring the sender of mail to affix stamps in the upright corner of the envelope.

Collectors of postal history and picture postcards should be on the look out for envelopes and postcards with stamps affixed in odd positions, as they could well form an interesting thematic/topical collection.

Here are some of the interpretations of the stamp language:
Stamp Positions & Meaning:

Upside down, top left corner = I love you
Crosswise on top left corner = My heart is another's
Centre of envelope, at top = Yes
Center of envelope, at bottom = No
Straight up and down, any position = Goodbye sweetheart
Upside down, top right corner = Write no more
At right angle, top right corner = Do you love me?
At right angle, top left corner = I hate you
Upright top right corner = I desire your friendship
Upright in line with surname = Accept my love
Upside down in line with surname = I am engaged
At right angle in line with the surname = I long to see you
Centered on right edge = Write immediately!



Statement in a blog by long time leader of the Cartophilatelic Society, David Wolfersberger on December 30, 2016:

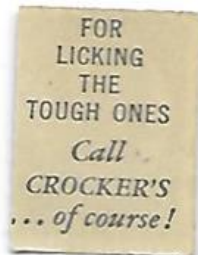
“A couple of weeks ago I was talking to a non-stamp collector about my collecting activities and stamps in general. She asked how many new stamps were issued every year and how many stamps have been issued since the first one in 1840. I made a couple of guesses (10,000/year) and about

500,000 total issued. To try to verify that I contacted Tara Murray at the American Philatelic Research Library. She found that Linn's used to publish an annual tally of new issues but hadn't done so for many years. She did some further research and concluded there are between 10,000 and 15,000 new issues annually; the total number of stamp issued is estimated between 525,000 to 750,000. These are estimates and certainly not precise. Regardless, both the annual and total number of issues is huge which makes a truly complete worldwide collection essentially impossible, even if the very high value stamps are excluded. My guess that eliminating all stamps with a catalogue value greater than \$5, for example, would not reduce the total number by more than a few hundred thousand. Tara also said the only way to get an accurate number is "to get your favorite catalog and start counting!" Not many of us are going to do that."

The stamps of Brazil had the name of the country spelled B-R-A-Z-I-L until the 1918 issues. After that year the country is spelled B-R-A-S-I-L.

Peru also used grills on its early stamps according to the *Weekly Philatelic Gossip* of December 5, 1953.

"The stamps of the world are powerful object lessons in the eternal hunger of men for knowledge and news about their fellow men. They are a pictorial history of all the arts and sciences, and human progress, since the earliest civilizations." **Dwight D. Eisenhower**



It is not known who or what "Crocker's" is or was on the advertising on the back of these Eisenhower campaign labels. People with that last name have been prominent in U. S. business and politics since the early 19th century. Eisenhower appointed a Federal district court judge, Myron Donovan Crocker, to a position in the Eastern District of California in 1959. The back of this political cinderella has gum on it ready to be "licked."

[Return to February Contents](#)

[Go to WSC Home Page](#)

A Philatelic Crossword Puzzle



Across

1. Very Fine Used (3)
6. Philatelic Database (3)
8. Fruit topic (7)
11. General Post Office (3)
13. NZ Health 1931 (7-4)
15. Johore Sultan (7)
19. Indian state (6)
20. U.S. President (7)
21. Typographed (4)
26. Eire (7)
27. Postmarks (7)
28. Watermark (3)
29. Cancelled to Order (3)

Down

2. Country Scandinavia (7)
3. Suid Afrika (5-6)
4. Bird topic (8)
5. Van Diemen's Land (8)
7. Country S. America (7)
9. german colony (4)
10. Swiss catalogue (8)
12. German catalogue (6)
14. Ghana (4-5)
16. Miniature Sheet (2)
17. British King (6)
18. American Topical Association (3)
22. Malayan state (5)
23. Rome is capital (4)
24. First Day Cover (3)
25. First Flight Cover (3)

Harry Weiss once noted:: “At our age we are noticing we are getting slightly off center, the perforations are getting weak and our gum is cracking, darn that dentist! The color is still fresh—a good specimen for the shape we are in. We have been hinged many times—no wonder!”

Official Luxembourg postal stationary-cards have “postal card” in French (Carte Postale) and “postcard” in German (Postkarte). Originally they were called “correspondence cards.” but changed in 1878.

There

is an example of a post card used in the United States and printed in Germany with this same phenomena on page 7 of this Newsletter. Such usage is quite common. Contemporary philatelic usage is for a postal card to be the official government issued postal stationary and a post card to be a private commercially issued item that needs a postage stamp in order to be mailed.

Private Western Canadian Air post stamps/ labels by Jeff Lough

The Patricia Airways and Exploration, Ltd was awarded the air mail carrying contract for the Red Lake District in northwestern Canada on July 7, 1926. They were given permission to issue stamps that were sold through post offices. Before discontinuing on September 12, 1927 they had carried 8,416 pounds of mail. This company as well as others, including Eliot-Fairchild Air Transport Ltd Western Canada Airways Ltd, Yukon Airways & Explorations, Ltd and Black Commercial Airways were encouraged by the Canadian government because of the rapid development of certain remote areas, notably the Rouyn gold fields. The letters were required to have Canadian government post office stamps at the normal inland letter rate (3 cents). The private semi-official stamps had to be attached to the backs of letters and could have no representation of the face value on the stamps.



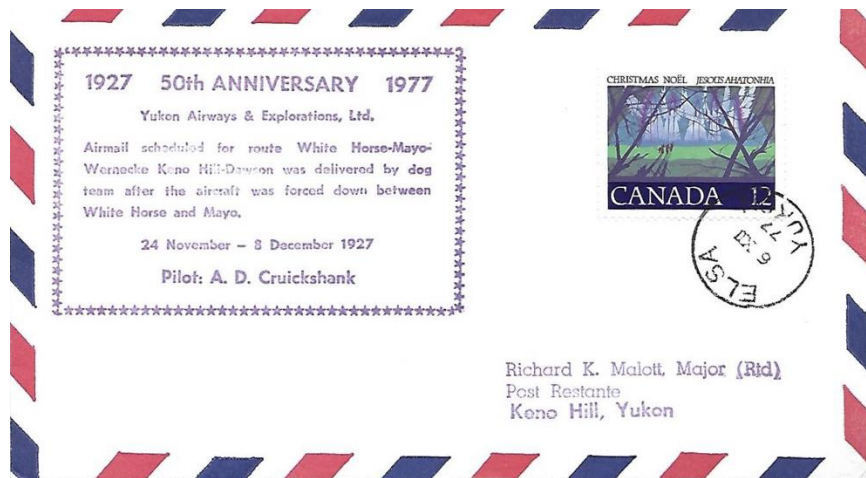
Western Canada Airways
Celebratory Label



Patricia Airways and
Exploration, Ltd



Black Commercial Airways
Stamp



Commemorative cover celebrating Yukon Airways & Explorations, Ltd first flight in 1927

[Return to February Contents](#)

[Go to WSC Home Page](#)