

Wichita Stamp Club Newsletter



Vol. 84, No. 11, November, 2016

Jeff Lough
Editor



"Go Fly A Stamp"



Click on a link below in order to go directly to the article.

[Miscellanea](#)

Armstrong County SD, "Ten Most Wanted" on stamps proposal, Presidential Cinderellas, Liberia and President Gore

[Tarot Philatelique](#)

[Sedgwick County IV](#)

A philatelic visit to more of its towns.

[Travel Kansas](#)

Visit Vermillion

[Don't Sweat the Small Stuff](#)

A sweet little number posted in Thomaston, Maine

[Nice little note home by postcard](#)

[Go to WSC Home Page](#)

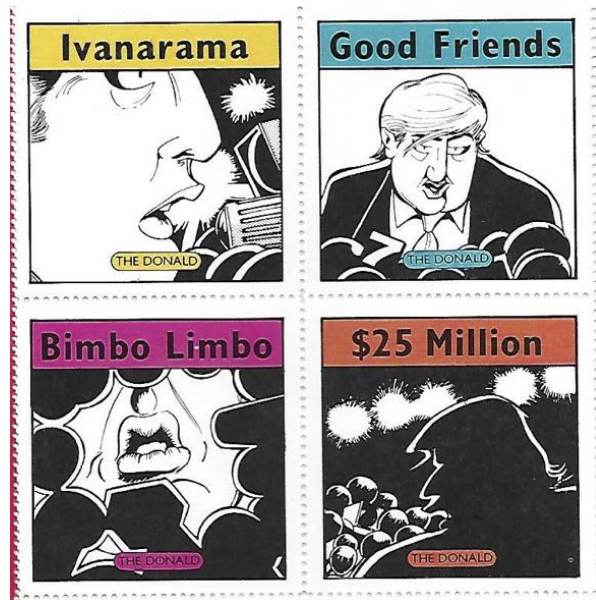
In the 1932 election Armstrong County, South Dakota was one of two counties in the United States that voted 100 % for FDR. In 1940 it was the only county in the nation without a *post office*. Apparently the vote didn't influence Secretary Farley. In 1952, given its small population and with much of the best land flooded by the Oahe Dam, the county was abolished and annexed into the southern part of Dewey County. An old ditty begins: "All Hail to Armstrong, South Dakota,

Land of the Free.
 You have yet to fill your quota,
 With a Federal Employee!"

The *Hutchinson News* of March 19, 1985 reported that the USPS "coordinator of the committee that selects ideas for stamps" had said: "Someone suggested we put the 10 most wanted men on the stamps. Whoever sent the idea in thought it would help track down the criminals but was overlooking the fact that people - unless they are former presidents - must be dead 10 years before they can appear on stamps. One man wanted only pictures of Democrats on first-class rate stamps. Postage due stamps would be reserved for Republicans. And then there was the guy who thought the pretzel industry should be honored with a stamp. To make it meaningful, he suggested beer-flavored glue for the stamp."

Cinderellas Celebrating the 2016 U. S. Presidential Candidates by Jeff Lough

A private entity issued a set of stamps calling attention to the Lewinsky affair. One of these cinderellas pictures President Clinton and his wife. Mordovia is a combo-play of terms combining the name of the country of Moldova and the province of Romania, Moldovia, and a Latin particle standing for "dead"...."mor".



Gary Trudeau, in *The 1990 Doonesbury Stamp Album*, issued several labels relating to Donald Trump. These are copied above. Over the years Trudeau has not favored Trump in his daily newspaper comic strip.

Liberia Jumped the Gun by Jeff Lough

The country of Liberia printed stamps celebrating the election of Vice-President Al Gore as President of the United States. Of course the election of 2000 did not result in his election. Gore's father had been a U. S. Senator from Tennessee, as Gore was before serving as Vice-President during Bill Clinton's presidency. Vice-President Gore has received a Nobel Peace Prize and is on the Board of Directors of Apple Computer. The souvenir sheet and set of proposed stamps illustrated below were not formally issued and were not used postally.



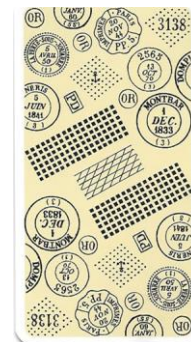
[Return to November Contents](#)

[Go to WSC Home Page](#)

Tarot Philatelique by Jeff Lough

Bonnie Smith, in her column, “The Phemale Philatelist,” of the July-August, 2016 issue of *The American Stamp Dealer & Collector*, described a deck of French cards designed to play a game called “Tarot Philatelique”. T. S. Eliot's poem, “The Waste Land”, is structured around a tarot reading given to someone around the era of World War I and some of the “actors” of the poem are based on classical Tarot characters. Some have considered this poem to be the greatest written in the English language in the 20th century. However, the Tarot game is different and has very different cards. The deck I purchased was the same as that described by Ms. Smith and is somewhat more similar to a classical deck of playing cards. The tarot game deck has sets of complete runs of spades, diamonds, etc. with some “face” cards illustrating French postage stamps. It is good that the internet provides English versions of both a sophisticated way to play the game as well as a much simpler way. Some of the attractive classic French commemorative stamps depicted on the faces of the playing cards include a Marc Chagall stamp as well as a couple of the author's favorites, the commemoratives dealing with the Carthusian/ Chartreuse monastery in eastern France and Mount St. Michel on the river border between Brittany and Normandy in the northwest of France. The back of the Tarot game cards illustrate a variety of French postmarks. While looking for this on eBay I came across two additional related philatelic phenomena. An individual in the United Kingdom has made some cinderellas based on the classical fortune telling card set with a modern twist and in 1995 the French colony of Wallis and Futuna had issued a set of “Local Plants” stamps one of which illustrates the “Tarot Shrub”, Scott Number 472. Examples of these things are illustrated below:

“Madam Sostris, famous clairvoyant,
....Is known to be the wisest woman in Europe,
....I do not find The Hanged Man.
Fear death by water. I see crowds of people,
walking round in a ring.....”

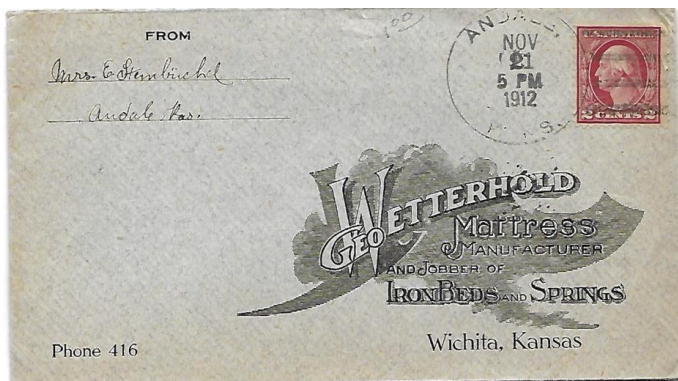


[Return to November Contents](#)

[Go to WSC Home Page](#)

Sedgwick County IV by **Jeff Lough**

Leon Fouquest, a French hunter, homesteaded the location in 1874. Later, in the early days of Sedgwick County two prominent farming communities occupied land in the neighborhood of what was the Fifth Parallel school house in Sherman township. These families were the Andersons and the Dales. When a town was established in connection with the routing of the Wichita & Colorado Railway from Wichita to Hutchinson the families' names were abbreviated and joined somewhat like Ted Scott's name was to get the town name of Tescott 100 miles to the north. The area around **Andale** was settled by German Roman Catholics who concentrated on wheat production. Andale's first post master was Leon Fouquet and the post office was established January 16, 1889. The name of the post office was changed from Magnolia to Andale in 1891 after moving one mile north to be on the railway line. The Scott # 406 is cancelled with a four bar Doane handstamp dated towards the end of 1912 and sent to a Wichita concern with a fancy commercially addressed address.

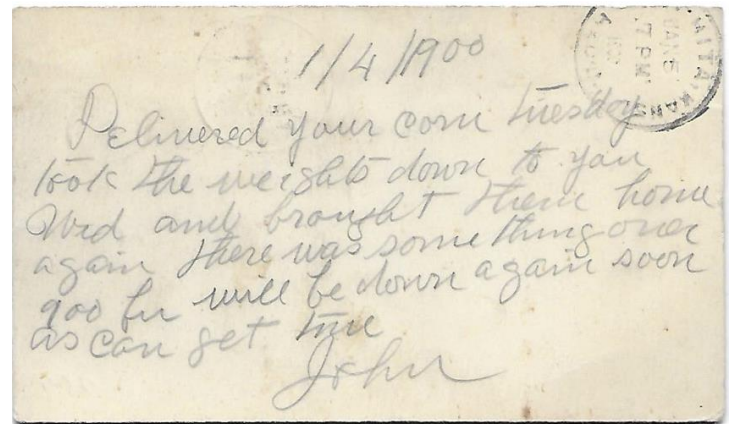


Clarion was located in Lincoln Township, in eastern Sedgwick County near Wild Cat Creek. Sullivan Clark was the first post master and the post office operated for two separate periods, from June 2, 1871 until January 23, 1882 and from March 3, 1882 until January 8, 1885. Mail was delivered to the Clarion post office from the Palmyra post office in Butler County, just to the east. The Scott # 210 is cancelled with a two ringed circular date stamp dated June 23, 1884 and addressed to a lady in Ellsworth, Illinois.



Mount Hope is located northwest of Wichita. Its first post master was Thomas H. Randall and the post office began operating December 24, 1873. It had originally been on the Wichita-Geneseo branch of the Missouri Pacific Rail Road. It was quite prosperous until the building of a good blacktop

highway between Hutchinson and Wichita. At one time Mount Hope had a highly regarded opera house that seated 600 patrons. Through the early part of the twentieth century Mount Hope had nice cottonwood and maple tree lined avenues and a busy downtown. It was a prominent Sedgwick County town with a national bank as well as a state bank and numerous retail outlets. The note on the accompanying 1900 post card confirms that Mount Hope was a center of wheat production like Andale, its neighbor to the south. The U311 stamped envelope to the lower left is cancelled with a circular date stamp dated May 16, 1886 with a target killer. To the right is the rear of a post card with appears to be a two ringed backstamp with a date towards the end of 1899 or beginning of 1900. The note on the card describing some business being done with a wagon hauling corn and rock.



[Return to November Contents](#)

[Go to WSC Home Page](#)

TRAVEL KANSAS—NORTH TO SOUTH—EAST TO WEST by Neal E. Danielson



Figure 1

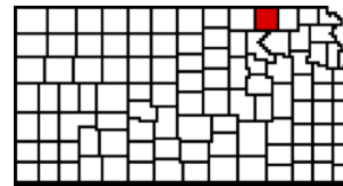


Figure 2

Travel Kansas—Vermillion is located in Marshall County (Figure 1 & 2), Kansas and was founded in 1869 by the Missouri Pacific Railroad Company. The name Vermillion was derived from the Black Vermillion River, a tributary of the Blue River that flows from the Nebraska border south through Marshall County. The post office opened on May 2, 1870 in Vermillion and remains open. The town of Vermillion had no schools, so the children were bused to either Frankfort to the west or Centralia to the east as both towns had Elementary and High Schools. Marshall County can lay claim to territory that the Oregon Trail crossed. The infamous Donner-Reed party camped along the banks of the rivers. The party lost one of their members, Sarah Keyes, whose remains were buried at a place called Alcove Springs just outside of Marysville along with several other pioneers of the early days of Kansas.

When Francis James Marshall came to the territory in 1849 from Weston, Missouri and established a ferry across the Big Blue River at what was known as “Independence Crossing”, he would eventually decide to remain in Marshall County and call it his home. He moved his ferry business to a crossing up the river known as Marysville, a city named after Francis Marshall’s wife Mary.

On May 30, 1879 a F4 tornado passed through Marshall County known as the “Irving, Kansas Tornado” that created damage in an area 800 yards wide and 100 miles long. The tornado killed 18 people and left 60 injured.

What used to be the Marshall County Courthouse located in Marysville (Figure 3) is now the Marshall County Historical Society that includes a Museum and Research Library. It’s a grand and beautiful structure.

A post card (Figure 4) franked with a 1¢ George Washington Stamp (Scott #405) and tied to the card with a footprint killer cancel and circular-date-stamp, postmarked from Vermillion, Kans. on Dec 28, 1914 and mailed to an individual in Wakarusa, Shawnee County, Kansas. The post office in Wakarusa was first established in Williamsport on May 22, 1863 and transferred to Wakarusa on July 1, 1870 and is open today.

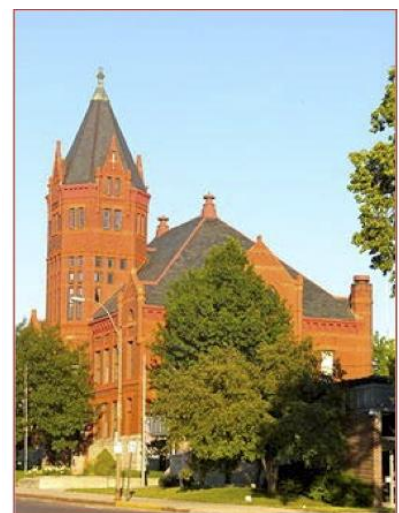


Figure 3



Figure 4

[Return to November Contents](#)

[Go to WSC Home Page](#)

DON'T SWEAT THE SMALL STUFF by Neal E. Danielson

This is the 78th in a series of articles relating to small post cards and small covers so if you have any in your collection that you would like to share please let us know.

This Small Stuff (Figure 1) comes to you by way of Thomaston, Knox County, Maine through South Cornish, Sullivan County, New Hampshire and the cover measures 4 5/8 inch by 3 5/8 inch. The cover is franked with a 2¢ George Washington stamp (Scott #319) and tied to the cover with a foot print killer cancel and circular-date-stamp postmarked from Thomaston, ME on Dec 31, 1906. The cover arrived in South Cornish the following year in Jan 1907 according to the back cancel received postmark (Figure 2).

Thomaston was formerly known as Fort St. Georges; Fort Wharf; Lincoln, based on a 1630 trading post that was built on the eastern bank of the St. George River. This was followed by a gristmill in 1704 built by Thomas LeFebvre on the Weskeag River as well as a home and the area soon became known as Thomas' Town.

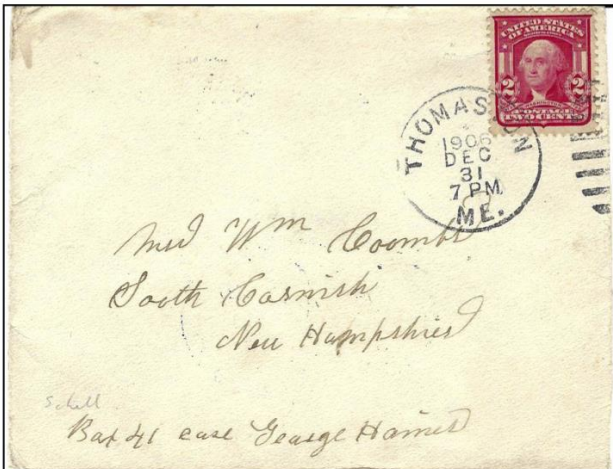


Figure 1



Figure 2

The old trading post was transformed in the years 1719-1720 into Fort St. George, as a stockade fort to protect two blockhouses from the Abenaki Indian tribes. The French instigated an Indian attack twice on the garrison in 1722 and again for 30 days in 1723. By 1724 the Fort gained strength and were able to destroy the Abenaki stronghold. Fort St. George (Thomaston) played a major role in the French and Indian War during the battles in 1758 and 1759 before the end of the War in 1759 with the fall of Quebec.



Figure 3



Figure 4

In 1763 Mason Wheaton became the first permanent settler located in the heart of Waldo Patent and Thomaston was incorporated from St. Georges Plantation on March 20, 1777. More settlers arrived in 1783 following the Revolutionary War. General Henry Knox constructed his mansion in 1793-1794 called *Montpelier* within Thomaston. In the early 19th century Thomaston became a port and ship building center. Other industries followed such as two additional gristmills, two sawmills and planing mills, three sail lofts, brickyards, cask manufacturing and a marble works. Shipbuilding would prosper for over 200 years as the George's River were navigated by English ships to reach the forests that existed inland (Figure 3).

Eventually Thomaston took advantage of this great resource and began building ships and constructing great masts to sell to the King for replacements on his battle ships during his wars. It was also prosperous for local businesses in importing and exporting of goods and smaller crafts were constructed for use by local fishermen.

Both Mill Creek and Georges River became popular waterways due to the gentle sloping of the banks which made it easier to lay timbers on the shores to construct vessels and waterways to launch their craft.

When the Civil War ended new businesses began to emerge in Thomaston, one being Dunn & Elliott who established a sail making business, making sails for shipbuilding firm of Chapman and Flint who's factory was located on the Georges River. The business had a steady flow of product due to the damage done to sailing vessels caught in the horrendous storms around Cape Horn. They constructed a sail loft in 1875 which still stands today (Figure 4). The Dunn & Elliott also competed in the building of ships under the name of E. Walsh & Co., by Thomas W. Dunn, John and George Elliot and eventually became the T. W. Dunn & Co in 1866.

The Small Stuff cover was sent to a William Coombs in South Cornish, New Hampshire. Cornish is a town located in Sullivan County, New Hampshire along the Vermont border. The town was granted in 1763 and was known for a while as "Mast Camp" due to the number of tall masts that were floated down the river by English settlers to the shipping point. The town was incorporated in 1765 and named in honor of Sir Samuel Cornish a distinguished Admiral in the Royal Navy.

Cornish is the site of the Cornish-Windsor Covered Bridge that spans the Connecticut River, built in 1866 and is the longest wooden Covered Bridge in the United States (Figure 5) and the longest two-span covered bridge as well. This bridge is between Windsor, Vermont and Cornish, New Hampshire, with all of the bridge located in New Hampshire, because once you enter the bridge from the Windsor side you are in New Hampshire. It is designed as a Town Lattice Truss Bridge and is constructed of wood. Most bridges that are constructed of wood are covered to protect the wood from the environment. The bridge is 449 ft. 5 in. in length and 24 ft. in width and its longest span is 204 ft. There are other covered bridges in the Cornish area.



Figure 6

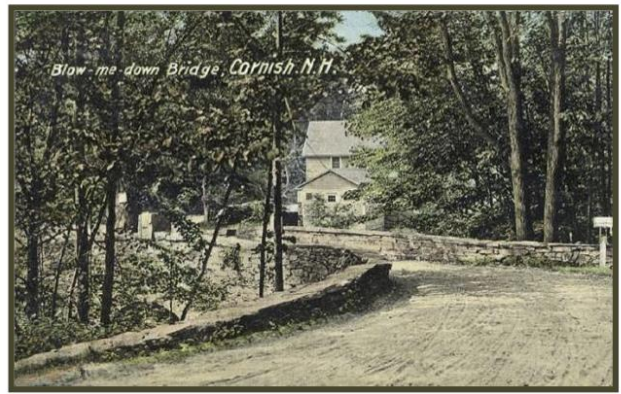


Figure 5

The Blow-me-down Bridge located in Cornish is constructed as a stone arch bridge (Figure 6). There are several Covered Bridges on the Blow-me-down creek (Figure 7) and a Blow-me-down mill; Blow-me-down Red Barn along with other structures.



Figure 7

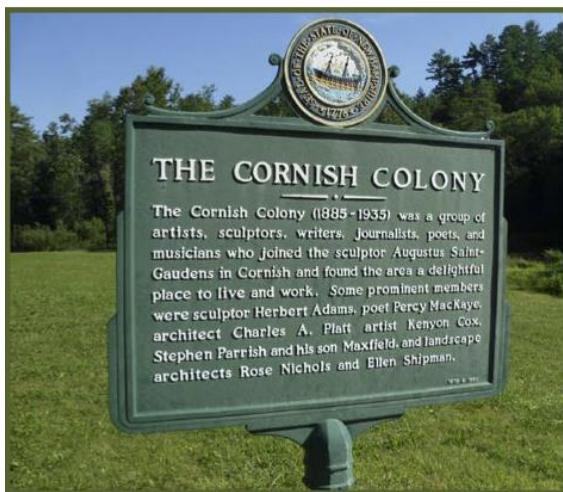


Figure 8



Figure 9
Scott # 886
Augustus Saint-Gaudens

A historic sign is located in Cornish in recognition of “The Cornish Colony” (Figure 8) that reads:

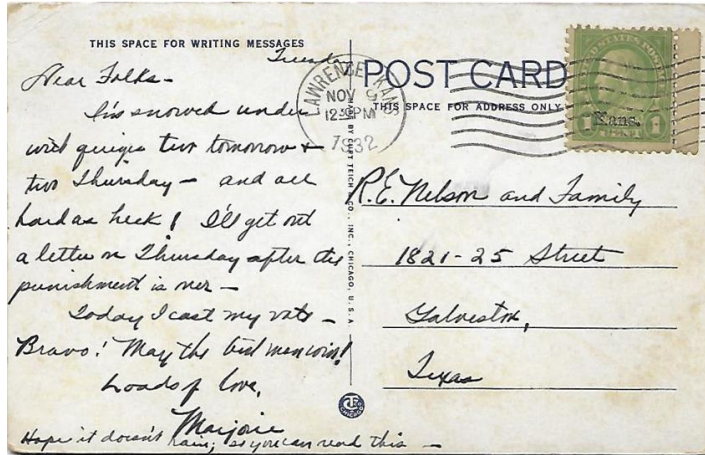
The Cornish Colony (1885-1935) was a group of artists, sculptors, writers, journalists, poets, and musicians who joined the sculptor Augustus Saint-Gaudens in Cornish and found the area a delightful place to live and work. Some prominent members were sculptor Herbert Adams, poet Percy MacKaye, architect Charles A. Platt, artist Kenyon Cox, Stephen Parrish and his son Maxfield, and landscape architects Rose Nichols and Ellen Shipman.

The central figure of The Colony was Augustus Saint-Gaudens (Figure 9) and around 1865 he decided upon Cornish as an ideal place for a summer colony of artists. Most of who were relatives or close friends from the Art Students League in New York that he himself co-founded. Many went on to become known within their own right with their careers. After Augustus died in 1907 the area slowly dissipated. However his home and garden were preserved by the Saint-Gaudens National Historic Site. Some of the individuals associated with the Colony you may recognize, such as Ethel Barrymore, Winston Churchill, Frederick Remington and Woodrow Wilson.

[Return to November Contents](#)

[Go to WSC Home Page](#)

College Student Votes in 1932 by Jeff Lough



In 1932 a young lady apparently attending the University of Kansas wrote a post card home to her parents in Texas indicating that she had voted that day in the Presidential election. She discusses her classes a bit. The front of the card bears an illustration of the student union at KU as it was in 1932. In that election Franklin Roosevelt beat Herbert Hoover. The note says: “Dear Folks – I’m snowed under with quizzes two tomorrow + two Thursday – and all hard as heck! I’ll get out a letter on Thursday after the punishment is over. Today I cast my vote – Bravo! May the best man win! Loads of love, Marjorie Hope it doesn’t rain; so you can read this.”

Nice note home, nice Franklin-Washington Kansas overprint stamp and a helpful circular postmark with a parallel wavy line killer.

[Return to November Contents](#)

[Go to WSC Home Page](#)

The Right to Vote by Jeff Lough

In 1848, at the first women's rights convention in Seneca Falls, New York, the delegates passed a resolution seeking the right to vote for women. For more than 70 years suffragists campaigned vigorously for this right, which was finally realized when Tennessee became the 36th state to ratify the 19th Amendment on August 26, 1920. The United States has issued several stamps celebrating women's suffrage. One is a member of the 1920's souvenir sheet of the 20th Century series of souvenir sheets issued in 1998. An earlier 6 cent stamp was issued in 1970 to celebrate the 50th anniversary of the 19th Amendment. And a 32 cent stamp was issued on the 75th anniversary. The amendment declared that "the right of citizens of the United States to vote shall not be denied or abridged by the United States or by any State on account of sex." In 1906 Finland became the first nation in the world to give all adult citizens full suffrage, in other words the right to vote and to run for office.



Scott Number 3184e



Scott Number 1406



Scott Number 2980



Scott Number 784



Scott Number 1293



Scott Number 2943

Susan B. Anthony spent more than 50 years organizing suffragettes. Lucy Stone was one of the earliest advocates for women's suffrage. She refused to pay property taxes because she was not allowed to vote. She helped organize the early national meetings to organize the voting rights movement. Alice Paul used her Ph. D. in social work and her training in civil disobedience to organize massive pro-suffrage demonstrations. She was imprisoned three times. She later worked to include equal gender rights in the United Nations Charter and in the 1964 worked on the U. S. Civil Rights Act and Bob's your uncle.

[Return to November Contents](#)

[Go to WSC Home Page](#)