

# Wichita Stamp Club Newsletter



Vol. 84, No. 5, May, 2016

Neal E. Danielson  
Editor



*"Go Fly A Stamp"*



Click on a link below in order to go directly to the article

[Don't Sweat the Small Stuff](#)

A little postal card sent to Oswego, Kansas

[Travel Kansas](#)

A visit to Grigston in Scott County, Kansas

[A Tour of Lyon County, Kansas](#)

[The Stampster](#)

A curiosity in philatelic literature

[Mother's Day](#)

[South African Bantam Stamps](#)

[Go to WSC Home Page](#)

## DON'T SWEAT THE SMALL STUFF, PART 2 by Neal E. Danielson

**This is the 72<sup>nd</sup> in a series of articles relating to small post cards and small covers so if you have any in your collection that you would like to share please let us know.**

This Small Stuff postal card comes to you from Lawrence, Kansas by way of Nelson Case, Esq. of Oswego, Kansas. This Small Stuff postal card (Scott #UX4) measures 5 1/8 inch X 3 inches (Figure 1) and the postal card is cancelled by a killer cross cancel with a circular-date-stamp from Lawrence, Kansas with a date of November 21<sup>st</sup> in the year 1876. This Small Stuff brings the second part of the story relating to Lawrence, Kansas and will cover the area of schools and newspapers. Lorenzo J. Worden was serving as Postmaster in Lawrence being appointed on March 14, 1873—1885.



Figure 1

The first school taught by Edward P. Fitch started January 16, 1855 in a small room offered by Dr. Charles Robinson in the Emigrant Aid Building. The school year lasted three and one-half months and there were 20 scholars. Similar groups established themselves in other locations in the settlement. The 'Quincy high school' opened March 30, 1857 at first in the Emigrant Aid Building, then transferred to the Unitarian Church basement. The winter of 1857-58 brought about the first so called public school. An improved formal operation of schools within the city came about in 1858, including a County Superintendent of Schools in 1859. It was during a school meeting in 1858 the question of having a University arose resulting in a Board of Trustees being established. An institution of learning opened April 11, 1859 under the leadership of the Presbyterian Church. It was called The University of Lawrence. Funds derived from the Church and from citizens led to construction on the building known as North College on Mount Oread (Figure 2). Additional funding was needed and the Protestant Episcopal Church came through. On January 1861 an Act of Congress was enacted to support a State University of Kansas. In 1863 Emporia and Lawrence were competing for the funds to establish the university. The end result was that Lawrence won by one vote. Lawrence offered \$10,000 donated by Honorable Amos A. Lawrence and they donated 40 acres of land. Once this transaction took place the Legislature turned to other charitable institution around the state; a Normal School at Emporia; the Asylum for the Insane at Osawatomie, the Asylum for the Blind at Wyandotte; and the Asylum for Deaf-Mutes in Olathe.

During the early years of the University, it was often called the Kansas State University, not to be confused with the one in Manhattan, Kansas (Figure 3). Lawrence and its University is well known for basketball, since the game had its beginning by an individual by the name of James Naismith. The University's mascot, is a mystical bird, whose origin transcended during the confrontations between the Free Staters and the pro-slavery movement during the Kansas Territorial years 1854-1861. It seems

that a Free Stater was out spying on an area of a pro-slavery encampment when one of their ruffians caught him and asked him what he was doing, whereupon he responded that he was out hunting for Jayhawks, saying it was a bird familiar to the area. That became the mascot of the University of Kansas which is a cross between a noisy and quarrelsome blue bird and the sparrow hawk.

The newspapers that were established in Lawrence have a history all their own. Two Kansas Free State newspapers were established; one by John and J. L. Speer called *Kansas Pioneer*; however they encountered major problems for their first issue, as there was resistance from individuals within the state that did not want to print the paper due to its reference to 'Free State'. They ended up taking the copy to a printer in their home town of Medina, Ohio. The first paper was dated October 15, 1854. When Mr. Speer returned to Lawrence he found that a pro-slavery paper, the *Pioneer*, had been established in Kickapoo, Kansas and he changed the name of his paper to the *Kansas Tribune*, first published in Lawrence on January 5, 1855.

The *Kansas Free State* was published in Lawrence on January 3, 1855 and was the first paper printed by a press in Kansas Territory. Josiah Miller and R. G. Elliott were editors and proprietors of the paper.

The *Herald of Freedom* was established by G. W. Brown. Its first printing was dated Oct. 24, 1854 and was published in Wakarusa, Kansas Territory. It remained in existence until the *Kansas State Journal* succeeded the *Herald of Freedom* in February 1861 and eventually itself merged with the *Lawrence Republican*. The *Republican Daily Journal and Daily Kansas Tribune* started March 3, 1868.



Figure 3



Figure 2

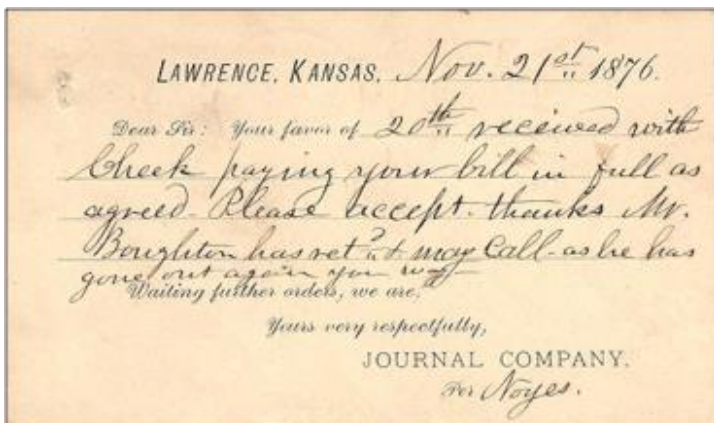


Figure 4



Figure 5

In 1876, the Lawrence Journal Company was organized, thus emerged the *Lawrence Journal*. The paper also produced a weekly edition called *Western Home Journal*. The company had charge of the paper until September 1, 1882 when Mr. Thacher and Mr. Webster took over and enlarged and improved the Journal. This brings us to the commercial side of our Small Stuff Postal Card (Figure 4).

At the time Littleton S. Crum was serving as postmaster, having been appointed to the position on April 13, 1876 and serving until December 2, 1886. The Small Stuff Postal Card was sent to Nelson Case, Esq. in Oswego, Kansas (Figure 5)

Oswego is the County Seat of Labette County (Figure 6). Most settlers that arrived in the new territory encountered hardships, some more than others based on their financial capability. When John Allen Matthews arrived he was able to establish a trading post near the Osage Indian village of Little Town. The Osage called the village No Tse Wa Spe, which means “Heart Stays”. Jesuit Missionaries from Osage Mission called the village “Little Town”. The village was often referred to as “White Hair’s Town” in honor of Iron Hawk the Grand Isi Shu Chief of the Osage Nation, as it was a tradition for the Osage Chief to take the name “White Hair”. A mural is located in Oswego depicting the relationship of White Hair encampment and Matthews Trading Post (Figure 7)



Figure 6

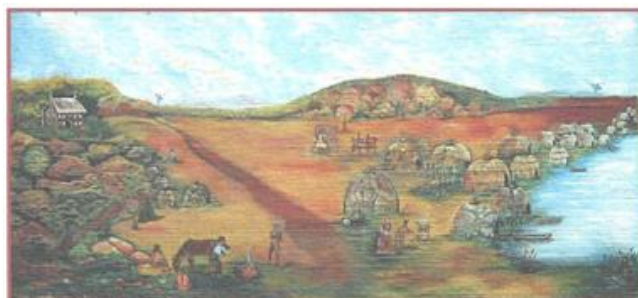


Figure 7

The first wheat crop was sowed by Charles Wadsack in the fall of 1866. There were no trashing machines so he used a primitive method by having a horse tread on it. This produced dirty wheat that would not make palatable flour. The first threshing-machine was purchased by Ed & George Cubbison in 1868. The machine was used by many other farmers in the area. A new reaper was purchase by Martin Jackson in 1870 and another threshing machine by Thomas Phillips. The first mill was established by John Hart’s to grind the wheat; at first the buhrs were for grinding corn but wheat buhrs was put in in 1868. It would be 1873 before self-binders and steam threshers appeared. Caster beans were planted and harvested by Y. W. Robbins in Pleasant Valley in 1873. The yield was so good that others in the County also planted them. The cotton industry was introduced in the county in 1873 when G. W. Everhart obtained seed and distributed it to farmers along the Labette Creek. He put in a small cotton gin in the fall of 1873 that was used for several years before it was taken to the Indian Territory.

Grasshoppers created havoc in the fall of 1866. Crops that were mature basically survived but green vegetation was destroyed. A hard freeze in March of 1867 thankfully killed the young hoppers. However they returned in 1874. Besides wheat, castor beans, and cotton the farmers produced corn, oats, rye, barley, buckwheat, Irish potatoes, sweet potatoes, sorghum, flax, hemp, tobacco, broom corn, millet, Timothy, clover, orchard grass and blue grass.

The small portion of Labette County history presented here was taken from a document by Nelson Case, Esq. Written in 1891. The Honorable Nelson Case was an attorney and Probate Judge, born in Wyoming County, Pennsylvania April 22, 1845. The family moved to Paw Paw, Lee County in Illinois where Nelson attended the local Academy and furthered his education at Clark Seminary, Aurora, Ill. He went on to study law at Michigan University graduating in March 1869. In May, 1869 he moved to Oswego, Kansas engaging in his law practice. He was elected Justice of the Peace in the spring of 1870 and served two years. He was City Clerk and City Attorney for several years then was City Superintendent of Schools and was a member of the School Board for which he served for four years as President of the Board. In July 1880 he was appointed Probate Judge and elected to the position in November of that year. When the Labette County Historical Society was organized he was appointed President of the organization. It was this appointment that inspired him to write the History of Labette County. His method of obtaining historical data was to communicate with people that lived in the County and descendants of pioneer settlers. Judge Case organized the Oswego Library Association and served as Chairman of its Executive Committee. The Judge was a teetotaler and a strong prohibitionist.

Nelson Case was a member of the Methodist Episcopal Church and an active promoter of church work, especially in the furtherance of the Sunday school enterprise. He served as President of the Fourth District Sunday School Association. He was a Trustee of Baker University. Judge Case was married at Attica, Indiana to Mary E. Claypool on February 22, 1872 and they had an adopted daughter.

[Return to May Contents](#)

[Go to WSC Home Page](#)

**TRAVEL KANSAS—NORTH TO SOUTH—EAST TO WEST** by Neal E. Danielson

Travel Kansas—Grigston is located in Scott County, Kansas (Figure 1) along the Atchison, Topeka and Santa Fe Railroad (Figure 2). The ATSF Depot (Figure 3) was constructed in 1887. Note the ATSF logo and the town being named Grigston appearing on the railroad car on the track as well as on the side of the depot. Initially the settlement was called Grigsby and a post office was established on August 18, 1886 and remained with that name until September 18, 1922 when the name changed to Grigston. The Grigston post office was closed on December 31, 1955.



Figure 1



Figure 2



Figure 3

Scott City is the county seat and is also located along the Atchison, Topeka, and Santa Fe Railroad that transverses the County from East to West. The Union Pacific branch comes in from the northeast into Scott City and then heads straight south. Scott County is named in honor of General Winfield Scott (1786-1866) a hero of the Black Hawk War and the War of 1812. He was commander of U.S. forces during the Mexican War and the first General-in-Chief of the Union Armies in the Civil War. General Scott has been depicted on five U. S. Stamps: Scott #142, 153, 175, 200 and #786 (Figure 4), which also shows Andrew Jackson and was one of the stamps in the U. S. Army series. Scott County was organized on June 29, 1886 by six early settlers. Several different Indian battles happened in Scott County. In 1878 "Squaw Den" and "Battle Canyon" occurred which would be the last Indian battle in which a U. S. Army officer was killed.



Figure 4



Figure 5

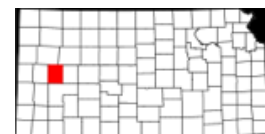


Figure 6

The Battle of Punished Woman's Fork was a confrontation between a band of about 284 Northern Cheyenne attempting to travel north to their home in Montana after they had been removed and sent to a reservation in Oklahoma Indian Territory on September 27, 1878. The Cheyenne were following two of their leaders, Chiefs Dull Knife and Little Wolf. The U. S. Army detachment was under the leadership of Colonel William H. Lewis who was under orders to capture the band and return it to the reservation in the Indian Territory. The Cheyenne had stopped at an area near Ladder Creek and attempted to ambush the Army soldiers. Once the gun battle began the Cheyenne attempted to escape but the soldiers followed and killed or captured them. The site of the battle was a pivotal event during in the Northern Cheyenne Exodus of 1878-79 to return to their homeland in Montana. A Historical Marker was set up at the site (Figure 5)

The location of Scott County in the west/central part of the State (Figure 6) lends itself to harsh winter environments, therefore pioneers that settled in the County and near Grigsby/Grigston built their homes in the ground called dugouts (Figure 7). Winters were hard on the pioneers due to desert like conditions of no trees to break the wind. One of the remaining structures is the Grigston School (Figure 8).



Figure 7  
Early Grigston dugout home



Figure 8  
Remnants of Grigston School

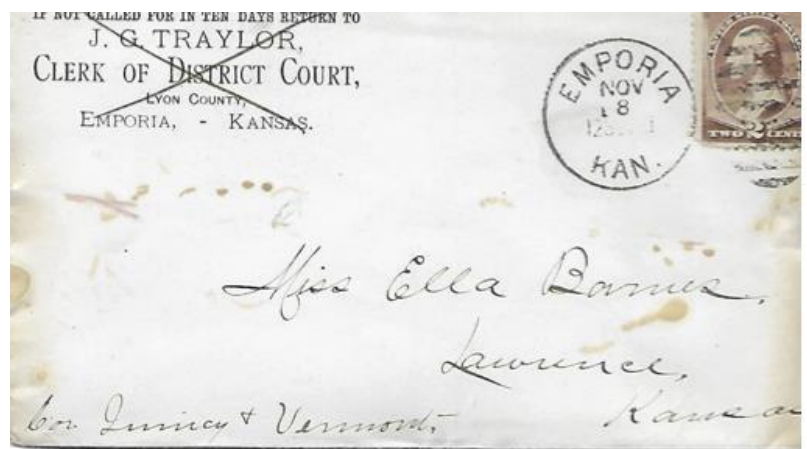
[Return to May Contents](#)

[Go to WSC Home Page](#)

## Touring Lyon County. Part I *by Jeff Lough*

Lyon County, in east central Kansas,, underwent a couple changes in its size during its early years. Chase County took the southwestern corner on February 27, 1860 and on January 31, 1861 it was enlarged to include the northern part of the county to the south, at that time known as Madison County. At first Lyon County was known as Breckenridge County and its name was changed on February 5, 1862. Breckenridge had been formed in 1855. Lyon County was named in honor of General Nathaniel Lyon who became the first Union general to die in action in the War of Secession when he was killed at the battle of Wilson Creek in Missouri. He had been an early commander of Fort Riley. It is the county seat of Lyon County, Kansas, United States. It had first been called Columbia. Emporia had been the name of an ancient north African/ Carthaginian area during the classical Roman era. It had been co-founded by free stater Preston Plumb who was later a U. S. Congressman who was noteworthy as a founding father of National Forest Reserves and as one who helped legally open the Indian Territory/ Oklahoma to European-American settlement. Emporia is renowned as the home of William Allen White, the popular and powerful editor of the Emporia Gazette and as the place where Armistice Day/ Veterans' Day was first celebrated. It is the home of Emporia State University.

Sports greats football coach Homer Woodson "Bill" Hargiss and basketball coach Dean Smith were also from Emporia. Hargiss is reported to have been an early developer of the forward pass and first used the huddle as a team action on the field. Dean Smith is credited with developing the Four Corners offense, and devising the foul-line huddle, creating the fatigue signal and implementing the run-and-jump defense, as well as playing on the 1952 University of Kansas national championship basketball team and winning two national men's basketball championships during his great career at the University of North Carolina. The Emporia cover is stamped with an American Bank Note Scott Number 210 that had been issued in 1883 to meet the newly reduced first class postage rate of 2 cents. It is postmarked with a circular date and location postmark and a stripped shoe killer and addressed to a lady in Lawrence, Kansas. It is interesting that an official corner-carded envelope from the Lyon County district court clerk's office was used with that return address scratched out. Emporia's first post office was established in 1857 and the first postmaster was Henry W. Fick.



Admire lies 20 miles northeast of Emporia. It was founded in 1886 and was named for one of its founders, Jacob Admire, a Civil War infantry captain who was later a newspaper publisher and member of the state legislature. The first post office in Admire was established in November 1886 and its postmaster at that time was Isaac French. For many years a post office in Waterloo, seven and a half miles southwest had provided postal services. Admire was a station and shipping point on the Missouri Pacific Railroad. By the mid-1990s rail service in Admire had been discontinued and the tracks are now being used as a rail trail. The Christmas greeting post card is stamped with a one cent green Ben Franklin from the Fourth Bureau Issue (Scott Number 552). The canceling machine had a simple circular postmark with a stripped horseshoe killer.



Admire Post Office

Neosho Rapids was originally called Florence and its first postmaster was Jefferson S. Pigman. The post office was established on February 2, 1858. The name was changed to Italia later that year. It was named Neosho Rapids in 1863 after the small area of white water just to the west of town. The river powered a nearby grist mill. During the Civil War the Calvary Company of Neosho Rapids was one of several local militia that organized for defensive purposes against Southern forces. LIFE magazine did a 5-page feature article in the December 24, 1945, issue of servicemen coming home to the town for their first Christmas after WW II. "As they pounded eastward, the crowded, crack trains of the Santa Fe slowed down only a little for the curve on the northwest edge of Neosho Rapids, Kan. In this little town (pop. 159), Christmas and its joyous reunion had already come and gone for the Irwin family. The fact they had to hold their celebration early did not dim the Irwins' joy...their 20 year old son Jack, Navy aviation ordinance-man second class, had to be back on duty by Dec. 14...Lieut. Clyde Roush, husband of Betty, oldest Irwin daughter...was reported missing over Japan last spring." This Neosho Rapids cover has an American Bank Note Scott Number 210 stamp with a nice double lined postmark and target killer.



Neosho Falls Post Office



James Ferdinand Irwin's family singing carols at early family reunion Christmas celebration marking safe return of sons fr. WWII (L-R) Mr. Irwin, Scotty, Carolyn, Betty Roush, Jim, Myra Lee Love, Jack, Jeanne Haney, Mrs. Irwin, Jeff Haney, Levern Love, Beth Love. © Time Inc. Myron Davis

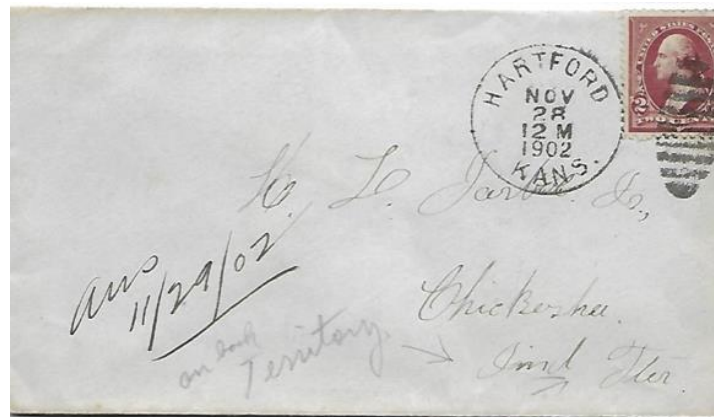
Hartford was laid out in 1858. Some of its founders were original natives of Hartford, Connecticut, hence the name. Hartford was incorporated as a city in March 1884. The Methodist Episcopal Church established a branch of Baker University in Hartford in 1862. Baker's primary location was and is in Baldwin City to the north. The beautiful two story "normal school" building still stands. Hartford also has been the home of a very large hardware store that had served as the post office for a long time. It has some remnants of interesting outside murals and is being held up by long posts laying at an angle against the north side of the building. The accompanying cover bears Scott Number 250, Type II of the 2 cent carmine version, of the Bureau definitive Issues of 1894. It is postmarked with a circular date, time and location postmark and a nine line shoe killer.



Hartford Post Office



Hartford Normal School building

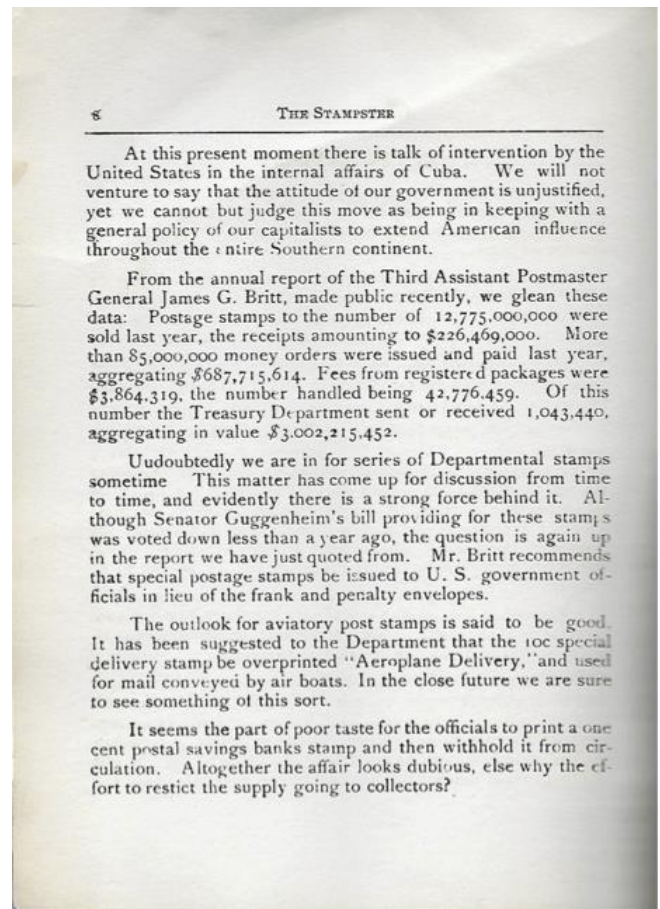
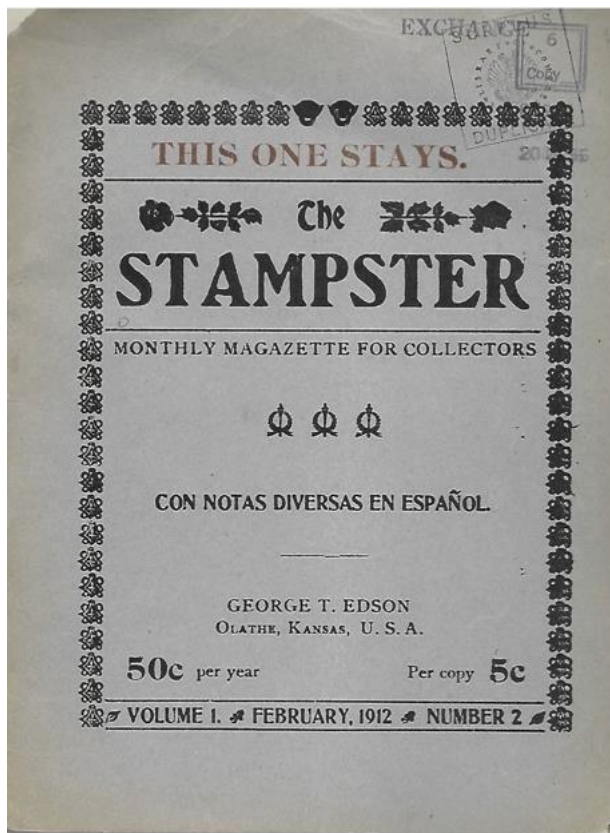


[Return to May Contents](#)

[Go to WSC Home Page](#)

**The Stampster** by Jeff Lough.

George Edson of Olathe, Kansas was editor and publisher of this 12-24 page periodical that sold for 5c per copy and 50c per year. At least 14 issues were apparently printed in 1912 and 1913 and the American Philatelic Research Library has 4 of those. The journal's ads were generally from the USA but there were also some from other places in the world such as Chile, Cuba, the Philippines, Argentina, Turkey, Belgium and the Dominican Republic. Ads and articles entirely in Spanish were included. These included the Spanish and English versions of some philatelically related government documents. Some of Mr. Edson's editorial comments were demeaning to other stamp periodicals. Some had a humor that sometimes jumped over some needed details. His featured lead column often jumped from one topic to another without adequate transition or resolution. However, it is noteworthy and nice that it included important Spanish language portions; that it was bi-lingual. *The Stampster* included philatelically pertinent fictionalized accounts, brief news notes, editorials and ads. Mr. Edson referred to himself as the **Kansas Filatelico**. The accompanying cover is addressed to a party in the Canal Zone from the office in Olathe and has a typical 1912 flag cancellation of the period on one of the common Washington 2 cent red definitives.





[Return to May Contents](#)

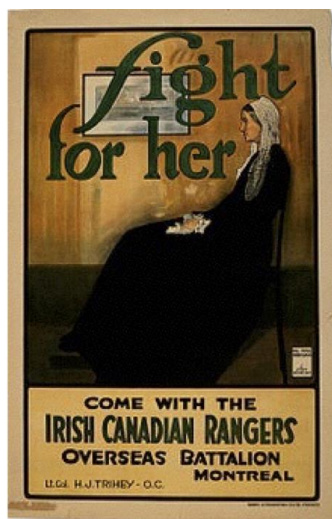
[Go to WSC Home Page](#)

## ***The Mother's Day Stamp*** by Jeff Lough.

Mother's Day began in May, 1907 when a Sunday church service in West Virginia included the wearing of white carnations in honor of mothers. By 1911 it was celebrated in communities in all 45 states as well as in parts of Mexico, Canada and China. The ancient Greeks and Romans had worshiped the mother of the gods, Cybele, with very different types of celebrations.

The Post Office Department issued the Mother's Day stamp pictured on page 1 of this newsletter in 1934. It is derived from the iconic *Arrangement in Grey and Black No. 1* by James McNeill Whistler, completed in 1871. Whistler had had no luck selling the original painting in the United States and was eventually paid \$600 for it by the French government that continues to own it and shows it at the Musee d'Orsay in Paris. It has been shown in the United States numerous times, including at the 1933 Century of Progress Fair in Chicago. The great French composer, Claude Debussy, wrote that his *Nocturnes* had been influenced by the painting.

The painting has been referenced in numerous popular manifestations. The original, a derived sculpture and a World War I Canadian armed forces recruitment poster are below.



[Return to May Contents](#)

[Go to WSC Home Page](#)

***South African Bantam Stamps. by Jeff Lough.***

The word “Bantam” refers both to a type of small chicken, the males of which are known to be aggressive, as well as to the set of Union of South African definitive stamps issued during World War II. They were issued in smaller designs to conserve paper. Pictured is Scott Number 90b, showing infantry fighters. This particular version of the issue is in Afrikaans, another like-version is in English. One might notice that the left side of the stamp is rouletted while the other three sides are perforated. This has resulted in the stamps of this series often being collected in horizontal pairs or triples.



size.



[Return to May Contents](#)

[Go to WSC Home Page](#)