

Wichita Stamp Club Newsletter

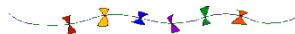


Vol. 84, No. 2, February 2016

Neal E. Danielson
Editor



"Go Fly A Stamp"



Click on a link below in order to go directly to the article

[Crawford County, Kansas](#)

Some postal history of the county

[War Camp Community Service](#)

[Travel Kansas](#)

A visit to Colby, Kansas

[Don't Sweat the Small Stuff](#)

70th in the series

[Ambulante Maritima](#)

An article on Spanish stamps used for "traveling" post

[Scinde Dawk postage stamps](#)

An interesting article on early postage stamps in British India

[Go to WSC Home Page](#)

Some of Crawford County's Postal History. Part II by Jeff Lough

Pittsburg, Kansas is the home of Pittsburg State University and is the largest town in Crawford County. Like most other towns in Crawford County Pittsburg was heavily influenced by the coal extraction industry of the late 19th century. A few miles northeast of Pittsburg in Franklin is a very active museum dedicated to coal miners, their families and their many types of ethnic backgrounds. Over 30 languages were spoken among the coal and zinc miners who generally came from central and southeastern Europe. The area had been known as the “Little Balkans” due to the conflicts and variety of ethnic and linguistic backgrounds of the miners. The best organized of the ethnic groups has been the Slovenians, coming from the area controlled by the Austro-Hungarian Empire between Austria and the rest of the Balkan Peninsula. The accompanying post card is stamped with Scott Number 300 and dated March 18, 1908 with a numbered flag cancel. The note to a party in northeastern Oklahoma is intriguing. It says” “It's often said there's room for one more. Here they are – the aristocrat's farm.”



Current Pittsburg Kansas Post Office



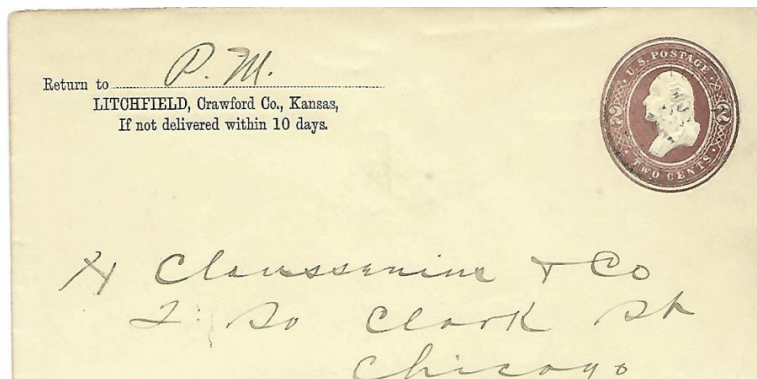
In the far southwest of the county lies Monmouth, one of the original settlements in Crawford County. Monmouth has and is the name of a variety of entities. Firstly it is a small popular tourist site in southeastern Wales. It is interesting that Great Britain has issued stamps designating its Shire, Monmouthshire, as a very noteworthy part of Wales. An example of one of the Monmouthshire and Wales “locals” for the



United Kingdom “countries” stamps is to the right The Battle of Monmouth was an American Revolutionary War battle fought on June 28, 1778 in Monmouth County, New Jersey. The legend of "Molly Pitcher" is usually associated with this battle. It is believed that she was Mary Ludwig Hays. According to one story, she was the wife of an American artilleryman who lived near the battlefield, bringing water for swabbing the cannons and watering the thirsty crews. The artillery men gave her the nickname "Molly Pitcher" because she brought them water from a nearby spring. The story is based on a true incident but has been embellished over the years. Two places on the battlefield are marked as sites of the "Molly Pitcher Spring." Above is a copy of the “Molly Pitcher” stamp commemorating the Battle of Monmouth. Nowadays Monmouth University is located in the same general area of New Jersey as the Battle. It is noted for its political polling entity and for the current men's basketball second and third team players, the “Bench” who had achieved distinctive national notoriety early this season for their wonderful entertaining sideline skits.

Monmouth, Kansas was named after Monmouth, Illinois that was named after the Battle of Monouth and the Monmouth, New Jersey area. The Monmouth, New Jersey area named after the Wales town. Nowadays Monmouth, Kansas is a church and several family dwellings although at one time it had a hotel, a school, several churches, a post office and numerous businesses. The accompanying 1909 Thanksgiving celebratory post card is stamped with SN 300 showing Ben Franklin and postmarked with a four bar Doane cancel.

Litchfield was a settlement 5 miles northeast of Pittsburg and 14 miles southeast of Girard. Its freight was picked up by the the Kansas and Missouri Railroad along Little Cow Cree at the nearby town of Midway. Its first postmaster was James Patmor. The Post Office operated from May 9, 1881 until July 15, 1903. The Post Office name had changed from Edwin. After the post office closed mail was delivered from Pittsburg. More than 500 rail car loads of coal were shipped each month in 1880 from Litchfield. Nothing remains of Litchfield. The accompanying cover from Litchfield is a U68 with a very indistinct killer cancellation.



McCune was served by the Kansas City, Ft. Scott and Gulf Railroad. McCune is an active little community about four miles west of Monmouth. In its heyday it had over forty businesses. McCune continues to have a post office. Its first post master was James McCune. The post office began operating August 12, 1878. It had been named Town. The accompanying postal envelope U68 is accompanied by a

dark purple Scott Number 221 illustrating Andrew Jackson. They are cancelled with two different postmarks, a double circled postmark apparently from a location after the required additional postage was discovered as needed and the more expected McCune single lined postmark with the barred oblong killer.



Mulberry is a small town in the northeast part of the county that lies on the state line with Missouri. The town occupies a former Indian camping and hunting site. It had been called Mulberry Grove after trees found in the region. Mulberry was a stage stop on the Old Military Road in the 1840s and '50s that ran from Fort Leavenworth to Fort Gibson in Indian Territory. Beginning in 1871 Mulberry was one of the area's mining towns and much coal was shipped away on the Kansas City, Fort Scott and Gulf Railroad, later known as the Kansas City Southern. At one time the St. Louis and San Francisco Railway also served Mulberry. Its first post master was John Myers who served from June 15, 1869 until May 21, 1892. Mulberry's was an international mail order post office that had two rural routes. The post office continues to operate and the sign in front of its nondescript building is below. It 1910 about a thousand people lived in Mulberry and about 500 do presently.

Mulberry no longer has a flour mill, newspaper or a variety of stores but has convenience stores, an elementary school, churches and a couple places to eat. The mural on the side of one of the empty business buildings below suggest Mulberry's former status as a mining community and the presence of a high school whose mascot was the Tiger. The U91 postal stationery cover with a Franklin one cent Scott Number 300 and the Washington two cent Scott Number 332 is postmarked with a barred oblong killer attached to a single lined date and town postmark. It is quite interesting since the party who was to receive it in Firenzi, Italy could not be found by the Italian postal authorities. It was returned to Mulberry and the party in Mulberry apparently could not be located either and it apparently ended up in the dead letter office. Of course sometimes parties were located by staff in dead letter offices after letters were opened. There was no indication that it was opened and re-sealed.



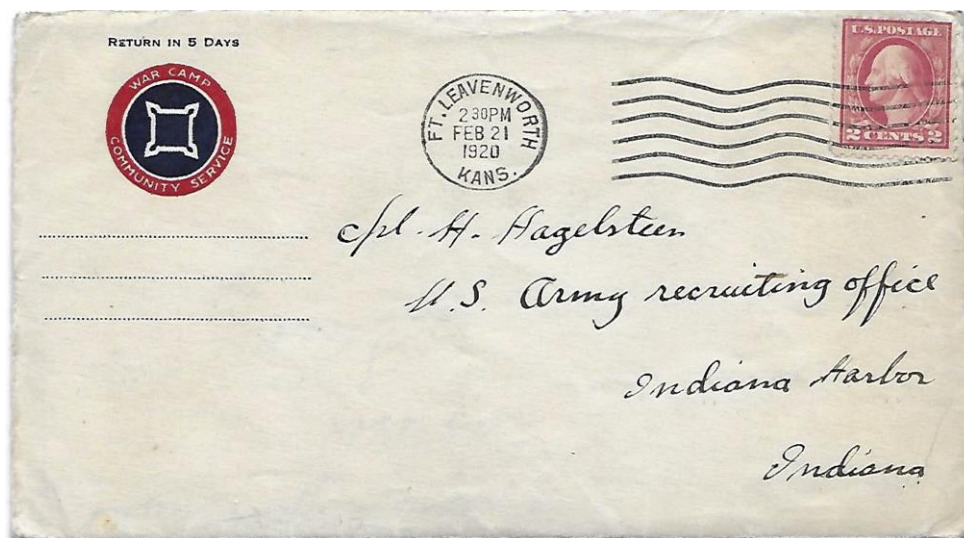
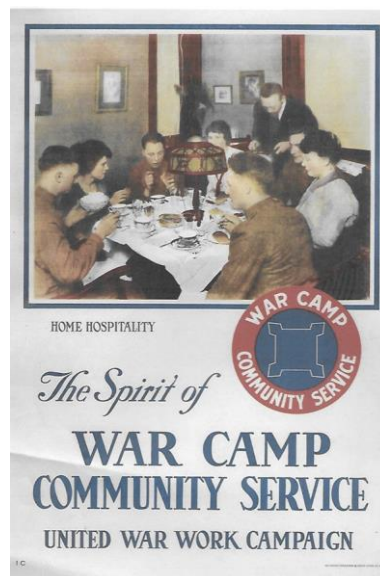
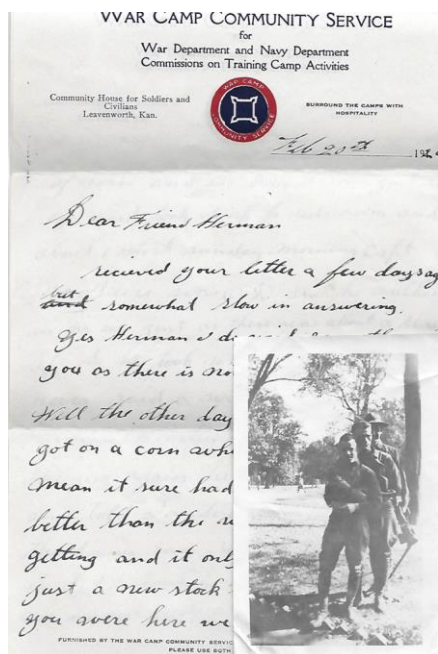


[Return to February Contents](#)

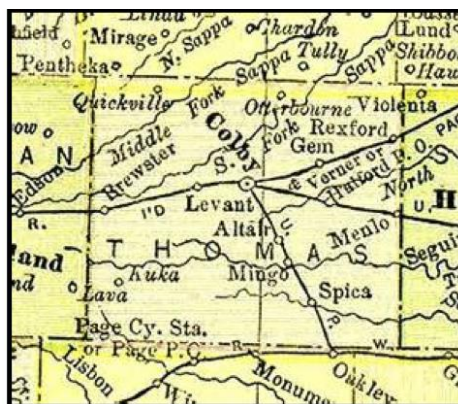
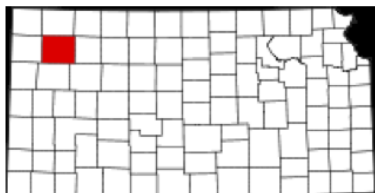
[Go to WSC Home Page](#)

War Camp Community Service by Jeff Lough

The accompanying cover postmarked from Fort Leavenworth, Kansas to an Indiana Army Recruiting office bears a corner card for the War Camp Community Service (WCCS). This entity was jointly administered by the War Department and the Department of the Navy during and shortly after World War I. Its primary purpose was to provide wholesome entertainment and other off base resources to soldiers and sailors stationed at the approximately 200 armed forces facilities in the United States. It was established by a Presidential mandate with the help of an existing non-governmental organization, the Playground and Recreation Association of America (PRAA). PRAA had experience helping local communities across the country establish recreational facilities. Their staff went to communities and areas with armed forces bases and began the community organization work necessary to get things going. The War Camp Community Service was active by the end of May, 1917. The WCCS was engaged in a wide range of recreational and assistance programs. The letter with the accompanying photo has amusing details comparing the relative merits of different types of alcoholic beverages. The letter describes the lack of military training and how boring it is to police the Fort. The Great War was over by this time. The Scott Number 540 Carmine Rose Washington definitive has a February 21, 1920 Universal Machine Type DT300 cancellation from Ft. Leavenworth, Kansas. The poster below and a small informative booklet is available at the Kansas City, Missouri World War I Memorial and Museum website archives.



TRAVEL KANSAS—NORTH TO SOUTH—EAST TO WEST by Neal E. Danielson



Travel Kansas—Colby is located in Thomas County Kansas and is the County Seat. The post office was first established in the center of Thomas County in 1881. The settlers in the region lived in harsh conditions in their sod homes and created a town that would provide lumber and other provisions for themselves as well as for others moving into the area. In April 1884 a local preacher and land assessor, J. R. Colby acquired a patent to establish a town. However, the land that he acquired in March of that year was located three miles north of the post office. A Town Charter was issued by the Kansas Secretary of State the following month and Governor John Martin named Colby the County Seat in 1885, and the town was incorporated in 1886. The Union Pacific Railroad reached the town of Colby in 1887, entering the County from the east border and a branch line from the south east corner; this was followed the next year by the Rock Island Railroad, entering the County on the north east border extending all the way through the County to the west border.

The first postmaster in Colby was John W. Irwin who was appointed on April 8, 1881. He served in this capacity until July 23, 1885.

A one cent Thomas Jefferson postal card (Scott #UX27) was mailed from the Colby Post Office on May 24, 1938 bearing a seven-wavy line circular-date-stamp to an individual in Wallace, Nebraska (Figure 1). The postmaster at the time in Colby was Carl G. Eddy who was appointed Acting Postmaster on November 6, 1933 and promoted to postmaster on April 27, 1934 and would serve until February 12, 1954. The message side of the postal card was a preprinted form used by the County Assessor's office in Colby (Figure 2). The notice is dated April 26, 1938 and lists the following assessment: 161.08 acres located northwest with an assessed value of 1195. The individual Mary Edmonds was living at the T. G. Cole resident in Wallace, Nebraska and T. G. Cole has written a note on the postal card "This does not belong to me & never heard of party" signed TGC. Don't know if the person ever received her notice of assessment. The community of Colby refers to Thomas County as "Oasis on the Plains".

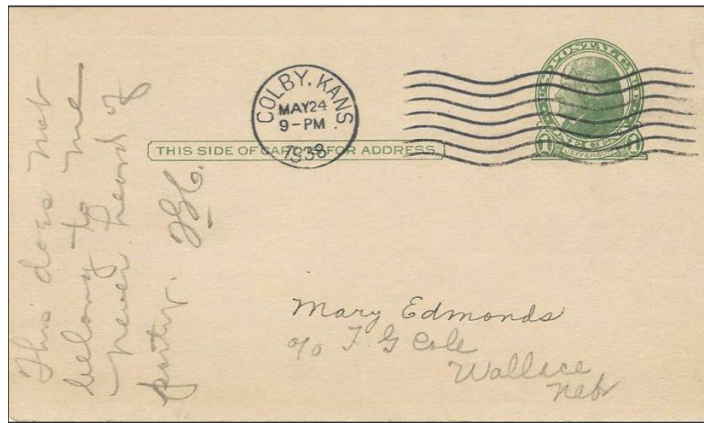


Figure 1

3564 COLBY, KANSAS, 4-26-1908

Dear Sir: All applications for relief from excessive assessments or errors in assessment must be made to the County Board of Equalization which, under the present law, will convene for the purpose of equalizing the assessment of real estate on the third Monday in May of each year when real estate is assessed, and will remain in session ten days for the purpose of hearing complaints. The Board will then adjourn for at least ten days and will notify all taxpayers whose property is to be raised in valuation as a result of its deliberations. At a three-days' session to follow such adjournment, all parties who have been so notified may appear before the Board and give reasons why the proposed increase in valuation should not be made. After this three days' session the County Board of Equalization is to adjourn sine die and thereafter no complaint regarding excessive valuations can be heard by any officer, either local or state, except upon appeal from the action of the County Board to the State Board. Taxpayers must understand that they cannot go to the Board of County Commissioners for relief from excessive valuations, but must get their relief, if at all, at the meetings of the County Board of Equalization in May and June. (Board will meet at same time for the equalization of personal property.)

CLINE CURTISS, County Assessor.

Description of Real Estate	Sec. Lot	Town	Range Block	No. Acres	Assessed Valuation	
					Dollars	Cents
N.W.	3.0	1.0	3.6	161.08	119.5	

Figure 2

The Thomas County Courthouse (Figure 3) was constructed in 1906 out of red brick in a Romanesque Revival style with the “Spirit of the Prairie” bronze statue proudly located in front of the Courthouse. The statue was designed and sculptured by Charles Norton of Leoti. The time capsule from the Courthouse was transferred to the base of the statue in 1985 when it was dedicated. The Courthouse is currently listed on the National Register of Historic Places as is the Colby Community High School and the art-deco sand-colored Colby Ci Hall, built in 1920s. When President Franklin Delano Roosevelt established the Works Progress Administration (WPA) the city of Colby profited from the projects in 1941 when St. Thomas Hospital was constructed as part of some 130 new hospitals established by the program.

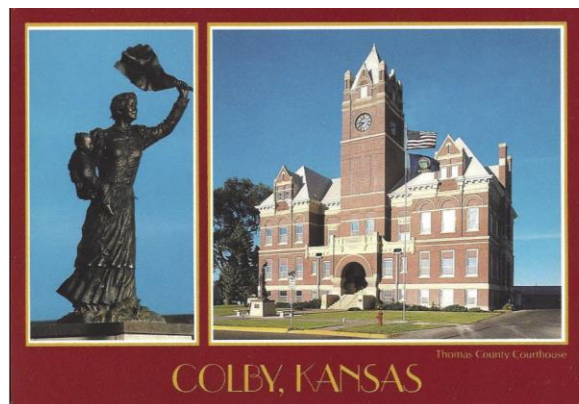


Figure 3

Today the Hospital is no longer in use but is listed on the National Register of Historic Places. The Thomas County Historical Society established in 1959 created a non-profit Prairie Museum of Art and History on a 24 acre site where the “Largest Barn in Kansas” is located (Figure 4). The barn was donated to the city by the Cooper family and thus called the “Cooper Barn.” The barn was built in 1936 by Benjamin Foster with the lower level housing the agricultural exhibit. The upper level is used for barn dances and other events.

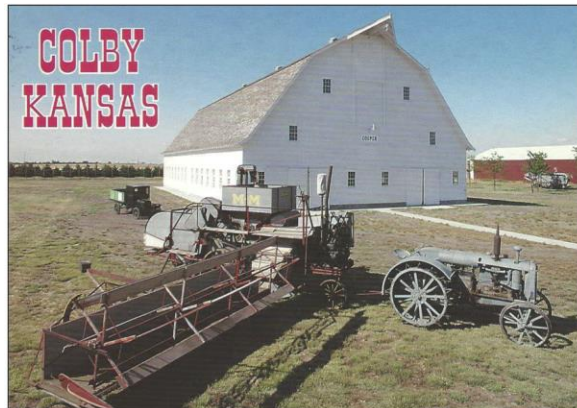


Figure 4

A celebration was held in 1993 that produced several picture post cards portraying some special features in and around Colby, two of these post cards are presented in this article. The Cooper Barn post card shows the Cooper Barn Station special pictorial cancellation and is franked with a Cherokee Strip Land Run stamp that celebrated the centennial of the Land Run (Figure 5).

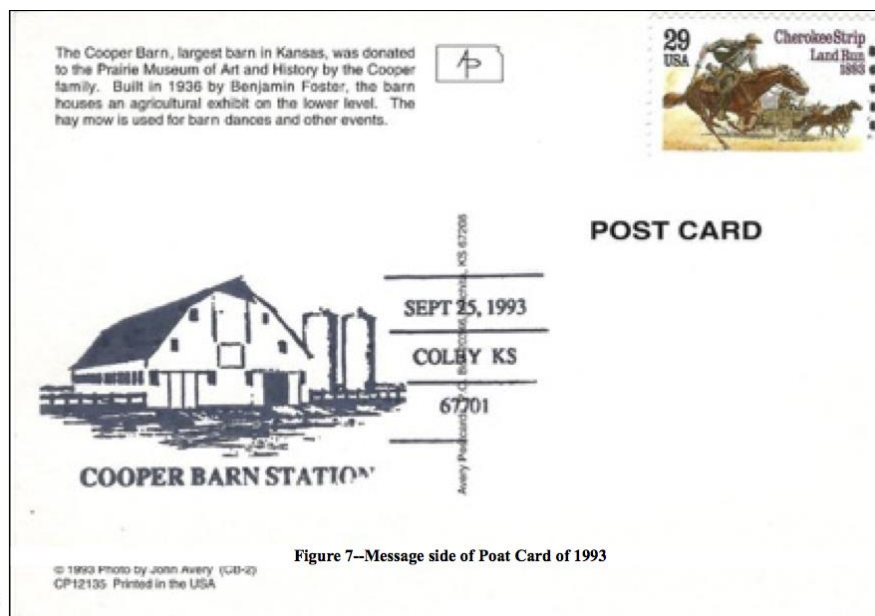


Figure 7--Message side of Post Card of 1993

A
as

Figure 5

DON'T SWEAT THE SMALL STUFF by *Neal E. Danielson*

This is the 70th in a series of articles relating to small post cards and small covers so if you have any in your collection that you would like to share please let us know.



This Small Stuff comes to you from Neodesha, Kansas, located in Wilson County, by way of to the cover with a seven-wavy line circular-date-stamp postmarked from Neodesha, Kansas on December 9, 1948, about a month after the stamp was issued on November 5, 1948 (Figure 1). The Post Office in Neodesha opened on June 13, 1870 with Alexander K. Phelon appointed as the first Postmaster. At the time this Small Stuff was posted, Joseph M. Steffen was serving as Postmaster, being appointed to the position on April 24, 1936 and serving until May 31, 1951 when Mrs. Verna Matilda Bray was appointed Acting Postmaster. This Small Stuff measures 4 1/8 inch by 3 3/4 inch, which would not be large enough in today's postal regulations. Based on the size of the cover it may have contained some type of greetings, such as a Christmas greeting; announcement of a birth; or possibly an invitation to a birthday party or other special event.



Figure 1

In the early 1800's the Osage Indians occupied the land where Neodesha now stands. Its name comes from an Osage word meaning "where waters meet", as the town is located between Fall River and Verdigris Rivers. Another Osage translation of *Ni-o-sho-de* is said to be *The-Water-IS-Smoky-With-Mud*.

As with a large number of towns in Kansas their early beginning was the result of settlers establishing a Trading Post on the "Osage Diminished Reserve" in order to acquire the traffic of the Osage Indians as the nearest Post was some thirty miles to the west.. A couple of settlers from the Neosho Falls area, Mr. A. McCartney and Mr. A. K. Phelon (Phelon would be appointed Postmaster) constructed their trading post near what is now called the famous Little Bear Mound.

There were other trading posts that were built before the one at Neodesha, such as a cabin built by two settlers on Fall River west of the town site. In October 1868 a Mr. Futhey and a Mr. Keys arrived at the trading post and after some investigation decided it would be a suitable site for a town. They purchased a claim, paying around \$500 and other claims were purchased at enormous figures. It wasn't long before McCartney and Phelon joined with Futhey and Keys in the formation of the town company and a survey of the town site on July 12-13, 1869. In December 1869 the frame of the first building was raised, resulting in the stock of the trading post being transferred to the building. In just one year the town grew to an additional 200 buildings and a population of around 1,000. Neodesha was incorporated on March 2, 1871 with the original plat being filed at the U. S. Land Office in July 1871.

The first railroad arrived in Neodesha in 1879. A Frisco Depot was constructed in 1880 and replaced in 1925 (Figures 2 & 3). Oil was first successfully drilled in what would become the Mid-Continent Oil Field. This oil well was officially named the Norman No. 1 oil well and was located in the southwest part of the city. A Museum by the same name is now located in the original well site.



Figure 2



Figure 3
Neodesha Train May 31, 1948

Neodesha can be proud of their Volunteer Fire Department that started on October 4, 1898 with 24 Firefighters. They worked in 2 teams of 12 men who physically pulled the hose carts to the fire scenes. In 1902 the Volunteer Firefighters purchased their first horse drawn hook and ladder at a cost of \$500. The fire station was built the following year and remained in use until 1998 when the city celebrated the Fire Department's Centennial and built a new fire station. Their first motorized equipment was purchased for

\$800 in 1908. The firefighters were volunteers until the City of Neodesha took charge of the fire department and employed paid firefighters (Figure 4).



Figure 4
Neodesha, Kansas Fire Station &
Equipment

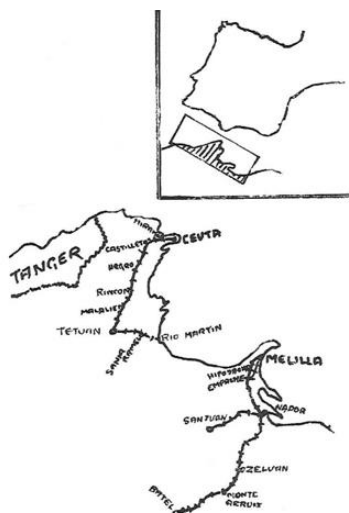
If one uses a magnifying glass to look at a copy of the Ft. Bliss stamp illustrated in **Neal Danielson's** current “Don't Sweat the Small Stuff” feature you will see a camel at the top of the triangle. Traveling all around inside the walls of the triangle are military transportation modalities.

[Return to February Contents](#)

[Go to WSC Home Page](#)

Ambulante Maritima by Jeff Lough

To control the use of stamps used to pay for mail sent by railroads and ships, Spain instituted a complex set of guidelines for overprinting their definitives. The accompanying block of four illustrates an overprint authorizing the stamps' use in transporting mail from mainland Spain to the small Spanish controlled area of Nador, Morocco. Nador was an area close to the larger community of Merilla. Merilla was an iron mining center. The Spanish Kingdom had controlled Merilla since the early 16th century. The upper section of the overprint would be "Ambulante Maritima" indicating that the stamps were to be used in ship transport of the mail overseas. "Ambulante" being the term meaning "traveling" for what is regarded philatelically as "Traveling Post Offices" and "Maritima" indicating sea-bound or overseas. Rather than Ambulante being spelled out, the abbreviation "AMB" is used. The middle third of the overprint gives the date: September 5, 1928. The phrase "Merilla-Nador" is printed in the lower part of the hexagonal overprint. "Ambulante" stamps are much more widely known among specialists in Spanish philately for their use with railroads. The stamp is the typical Royalist definitive (Scott # 332 in red violet) engraved without a watermark but with a control number on the back. The Spanish, Germans, British and French were struggling with one another and with the more native inhabitants of the Morocco area over control of the local economy and access to the Mediterranean Sea. Tangier, the large urbanized area to the west of Merilla, was designated as an International territory without a single European country in complete dominance. The Spanish eventually formalized control of the small colony of Spanish Morocco that included Merilla and Nador. From 1908 – 1912 the Spanish fought the local tribal leaders in this eastern portion of Spanish Morocco. Workers on the Spanish narrow gauge railway line were being attacked. The local tribal forces were overcome by Spanish-led local militia. Merilla is one of two enclaves on the northern African coast still part of Spain.



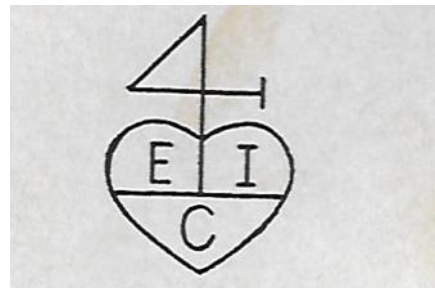
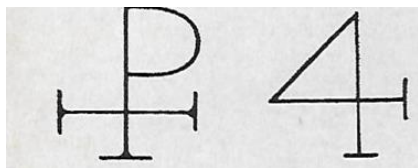
[Return to February Contents](#)

[Go to WSC Home Page](#)

The Scinde Dawks *By Jeff Lough*

The Scinde Dawk postage stamps were issued for circulation in Karachi, India (now part of Pakistan) by the British East India Company on July 1, 1852. They were reportedly the first postage stamps issued in Asia. The name derives from the words "Scinde," the British spelling for the Sindh area and "Dawk," the anglicised spelling of the Hindustani word "Dak" or Post. The company's version of the traditional "Merchants' Mark" was embossed onto paper which was then cut out and affixed to mail. There was only one denomination, the ½ Anna, and the stamp was impressed in three colors, red, white and blue. The first color, red, was issued on unstable paper that easily disintegrated. The white issue could not be easily distinguished from all the papers it was stamped onto. And so the blue one was made and worked somewhat better.

In medieval times one of the ways that traders and shippers countered evil was to use the Merchants' Mark. It was an ancient Christian sign composed of an "X" (cross) and a "P", the first letter of the name of Christ in Greek. From this sign is derived the Mystic Sign of Four, which is to be found at the head of every genuine Merchants' Mark, with the numeral four at the top as part of the holy "X". Various commercial interests using the design would add their initials and other insignia below the "X." In the case of the British East India Company they would place their initials East India Company within a heart below the Mystic Sign of Four as their version of the Merchant's Mark. The item to the left of the signs is an inexpensive copy of a forgery.



[Return to February Contents](#)

[Go to WSC Home Page](#)

Wituland by Jeff Lough

Wituland, a coastal region of German East Africa also known as Malakote, was a territory of approximately 1,200 square miles in East Africa centered on the town of Witu just inland from Indian Ocean; a strip of land on the coast of what is now Kenya. On the old map below Wituland is the light colored strip just to the right/ east of the pink British area and Mt. Kilimanjaro. The German Protectorate of Wituland (*Deutsch-Witu*) was established on May 27, 1885. The German Empire was represented by Resident Commissioner Gustav Denhardt. German rule was relatively mild. However, in accordance with the 1890 Heligoland–Zanzibar Treaty, on July 1, 1890 imperial Germany renounced its protectorate, ceding Wituland to Great Britain. It became part of British East Africa. The inhabitants wanted Germany to continue to dominate and the unrest eventually resulted in open rebellion by a war lord who was defeated by joint German-British military intervention. Due to the growth of the regional importance of Zanzibar, Witu's prosperity and independence gradually declined. The stamps below were purportedly printed by different generations of Arab led forces in the area and never used. It is doing them something of a favor to refer to them as “cinderellas.”

Page 11



[Return to February Contents](#)

[Go to WSC Home Page](#)