

Wichita Stamp Club Newsletter



Vol. 84, No. 8, August, 2016

Neal E. Danielson
Editor



"Go Fly A Stamp"



Click on a link below in order to go directly to the article

[Catapult Mail](#)

[Travel Kansas](#)

Visit Broughton

[Don't Sweat the Small Stuff](#)

A little number postmarked in Siloam Springs, Ark

[Philately of the Bahamas](#)

[The Pioneer Philatelic Phalanx and the Old Cowtown Museum](#)

[The "First" Air Mail Stamp](#)

[Go to WSC Home Page](#)

Catapult Mail by Jeff Lough

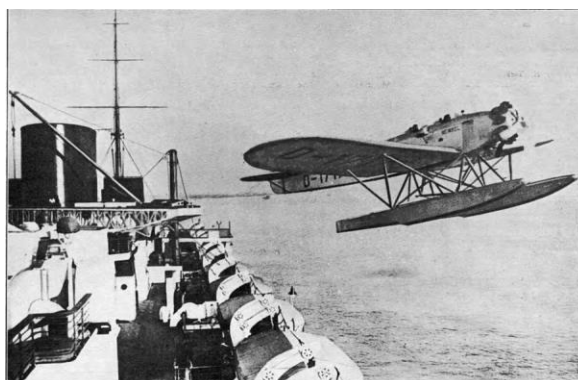
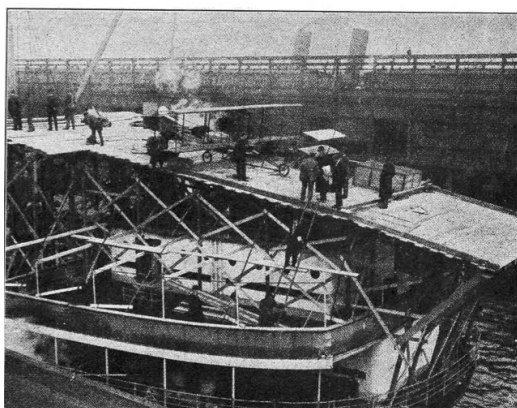
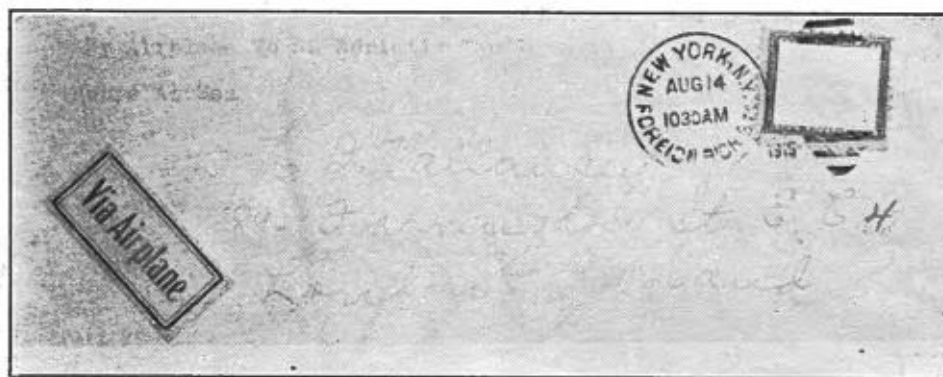


Prior to the advance of aviation to a point of reliable transatlantic travel, the North German Lloyd Line founded a mixed mode mail service. The shipping line outfitted two ships, the *Bremen* and the *Europa*, with airplanes and catapult equipment for transatlantic voyages. When the ship approached the aircraft's range of the destination shore, the airplane was catapulted off the ship and the plane would fly the remaining distance with the mail. On July 12, 1929 the German shipping line announced their first catapult mail flight to New York City. It took place on July 22, 1929 from the "S/S BREMEN", while the ship was about 500 km from shore. On the return trip, there was also a catapult flight from the "S/S BREMEN" to Bremen. The service ran from the test period in 1929 to regular operation in the summers of 1930 through 1936. With the advance of aviation, transatlantic flights made the catapult mail system unnecessary, but for a period of time it was a successful application of innovation in delivering the mail. The picture post card above was postmarked on August 29, 1929 in Brooklyn, New York, USA. "Katapultflug." The two auxiliary postmarks are translatable as "catapult flight." For the extra 15 cent postage fee, 1 or 2 days would be cut from the delivery time for the transatlantic mail service. It is noteworthy that the nice celebratory poster stamp is not tied by postmark to the post card. The four lines in the lower left refer to the illustration on the back of the card, which is a larger representation of a painting used for the design of a U. S. stamp showing Washington praying at Valley Forge. It is shown below. To the left is a latter day picture post card celebrating "Catapult Mail."



+

A special provisional stamp used by for the first French catapult mail event from the “Isle de France” in 1928 is to the lower right. In the upper center below is a copy of a cover mailed on the very first catapult flight from the *Bremen*. To its lower left is a photo of the catapult mechanism being readied on the *Bremen* for the first flight and in the lower center is a photo of the first catapult mail flight taking off from the ship.



The Airpost Journal. of November 20, 1929. Vol. I, No. 1 reports that the below right stamp was the first airmail stamp. It was used in 1906 in San Francisco by the Johnston-Dienstag Co. who conducted a special aeroplane service in San Francisco immediately after the great earthquake and fire. The stamp was brown and had an eagle in flight, with the name of the company and the notation 'Special Service San Francisco, California'. After about a week, the Government stopped it's use.



[Return to August Contents](#)

[Go to WSC Home Page](#)

TRAVEL KANSAS—NORTH TO SOUTH—EAST TO WEST by Neal E. Danielson



Figure 1
Clay County

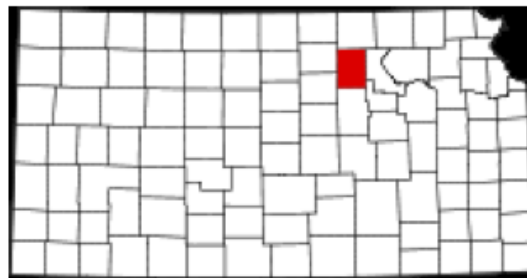


Figure 2
Clay County

Travel Kansas—Broughton was a crossroads village located in Clay County, Kansas (Figures 1 & 2). Clay County was organized in 1866 and Clay Center became the county seat. The County was named in honor of Henry Clay, a distinguished Kentucky statesman who served as United States Senator in 1806. He served in both houses following the appointment. During his forty-six years of public service he was minister of England and France and ran as a candidate for President in opposition to James K. Polk who served as President from 1845 to 1849. The first settlers arriving in the County following the Civil War resulted in several towns becoming a reality but the reality soon dwindled and some 143 communities didn't make the grade and went by the wayside according to research conducted in the County on lost towns. Our story is about a town that went by the wayside, but not until the 1960s. At least fourteen Union veterans from Illinois, Indiana and Iowa were awarded military bounty land in the area of Broughton, Kansas, their names preserved on a plaque in the Broughton Cemetery. The Kansas State University research revealed that around 9,000 named communities in Kansas vanished over the years. The study named communities including small crossroads villages, such as Broughton; mail drops at depots on railway lines; lingering communities that coalesced around a church; rapidly-fading religious colonies on the bleak western plains; villages that grew up on both sides of a river, such as the Republican River; some towns had as many as five different names; and towns that had a name but no people. Vanished towns are considered those that still have signs denoting their locations or that the site was once an orphanage; a denominational church; some ladies' institute; a Pony Express stop; mission; or trading post. Regardless of their demise they are all related in one way—they were someone's home town. The rich bottomland of the Republican River, that curves its way through the county from the very northwestern corner to the southeastern corner, had soil that the settlers found was excellent for growing wheat. Once the Union Pacific and Rock Island Railroads crossed the county along the Republican River, the town became a shipping point for stock on the two railroad lines. The Clay County Museum and Historical Society preserves some photos relating to Broughton, Kansas.

One end of Main Street around 1907 is depicted in Figure 3 and the cottonwood trees along Main Street around 1916 are depicted in Figure 4.



Figure 3



Figure 4

The Republican River crossing Clay County would often flood creating major issues for landowners and town populations. When the Federal Government passed the Flood Control Act in 1954 the United States Corp of Engineers was authorized to purchase land to construct a flood control dam on the Republican River. Construction began on the Milford Dam on July 13, 1962 creating the largest man-made lake in Kansas with 15,700 acres of water. The Corp of Engineers would own and operate the project. Some of the towns along the path of the future site were moved to higher ground, but the towns of Alida and Broughton would cease to exist. Houses in the towns were moved to other locations, razed, burned or buried. As for Broughton the lines of the Rock Island from the east and Union Pacific from the southeast were moved. The Broughton, Chicago, Rock Island, and Pacific Railroad depot was loaded onto a flatcar and moved to the Topeka fairgrounds (Figure 6). The town had a stockyard, grain elevator, school, church, telephone exchange, grocery store, private homes, a blacksmith shop under a large cottonwood tree and a Post Office. The Post Office that was located in Broughton was first



Figure 5-Broughton Townsite Road Side Marker



Figure 6

established as Rose Vale on February 25, 1869. The name was changed to Springfield on September 10, 1875, but changed back to Rose Vale on October 24, 1887 and on August 17, 1888 the village name changed to Broughton. The Broughton Post Office ceased to exist on March 25, 1966 to make room for Milford Reservoir. Figure 7 is a cover postmarked on the last day of operation for the Post Office through the efforts of **Hal Ottaway** of Wichita, Kansas a former member of the Wichita Stamp Club. The Broughton, Kansas cover is a 5¢ embossed Eagle stamped envelope (Scott #U550) bright purple issued Jan. 5 1965 and cancelled with a four-bar balloon circular-date-stamp postmarked Broughton, KS Mar 25, 1966.

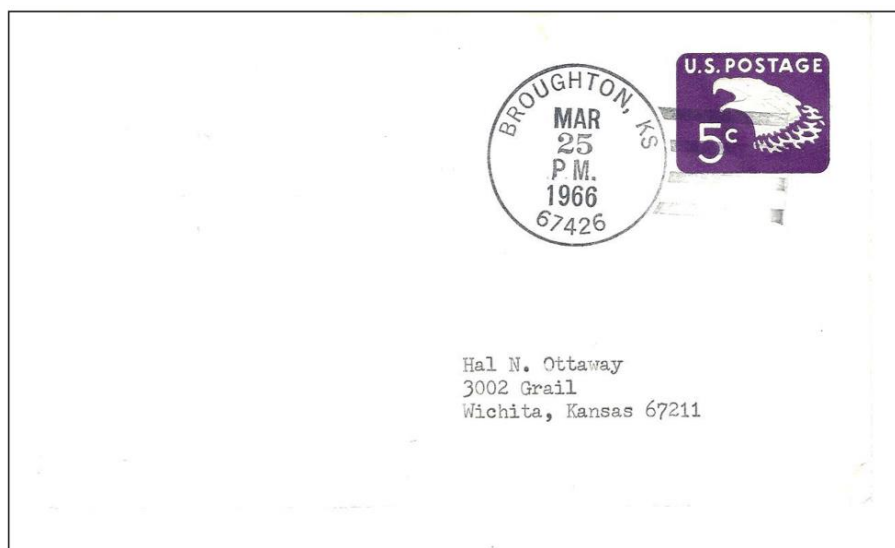


Figure 6

[Return to August Contents](#)

[Go to WSC Home Page](#)

DON'T SWEAT THE SMALL STUFF by Neal E. Danielson

This is the 75th in a series of articles relating to small post cards and small covers so if you have any in your collection that you would like to share please let us know.

This Small Stuff comes to you from Siloam Springs, Ark. by way of Hutchinson, Kansas thanks to **Hal Ross**. This Small Stuff measures 3 ½ inches by 2 5/16 inches and is franked with a 2¢ George Washington Stamp (Scott #250) and tied to the cover with a foot print killer balloon cancel postmarked Siloam Springs, Arkansas on Jan 2 1903 (Figure 1). Siloam Springs is located in Benton County, Arkansas along the Oklahoma-Arkansas state line with West Siloam Springs being located in Oklahoma in the Cherokee Nation Territory.

Siloam Springs was founded in 1882 as a result of the theory that healing powers of the spring feeding Sager Creek (Figure 2 and 3) and the trading opportunity associated with the nearby Native American tribes. Sager Creek flows through downtown and the banks are lined with stone and the landscape is covered with dogwood trees. Osage Indians inhabited the area prior to the first white settlers emerging on the scene. Simon Sager is credited with being the founder of the town, then known by its Native American name of Hico.

The downtown area of Siloam Springs has been preserved by the community (Figure 4) and parks along the creek are lined with stately trees and decorated with dogwoods. Fountains, gazebos, green spaces, foot bridges and even duck crossings provide a relaxing atmosphere for residents and visitors. A Dogwood Festival is an annual event with holiday lights brightening up the town with programs and activities enjoyed by the residents. The town conducts a year-round Farmer's Market which is very popular offering for the community and visitors.



Figure 1



Figure 2



Figure 3



Figure 4

The population of Siloam Springs is around 15,039 (2010 Census) and is home to John Brown University (Figure 5) and supported by the Siloam Springs School District which has a High School (grades 9-12); Middle School (grades 7-8); Intermediate School (grades 5-6); Southside Elementary School (grades 3-4); Allen Elementary School (grades 1-2); and Northside Elementary School (grades Pre-K & K). The University draws students from the Fayetteville-Springdale-Rogers Metropolitan area which has a total population of 463,204 (2010 Census).

The Small Stuff cover was mailed to an individual in Hutchinson, Kansas located in Reno County, founded in 1871 and named in honor of an Indian Agent under contract with the Santa Fe Railway, Clinton “C.C.” Hutchinson. The Arkansas River runs through Hutchinson, home of the Kansas State Fair; the Kansas Cosmo-Sphere and Space Center and Strataca (formerly known as Underground Salt Museum (Figure 6).



Figure 5



Figure 6

Hutchinson is home of the National Junior College Athletic Association Basketball Tournament held annually around March Madness time. Hutchinson also has a Junior College that enhances the educational opportunity for citizens of Hutchinson and the surrounding metropolitan area that includes Wichita and other communities.

[Return to August Contents](#)

[Go to WSC Home Page](#)

Philately of the Bahamas by Jeff Lough

A classical handbook published by Stanley Gibbons, Ltd. In 1950 entitled *The Postage Stamps and Postal History of the Bahamas* by Harold G. D. Gisburn has provided guidance in understanding Bahamian philately. Nassau, the capital of the Bahamas, was declared free from pirate raids by both the British government and by the pirates in order that the British merchants might profit from the goods with which they traded the pirates. So the first “mail” to and from the Bahamas to Britain safely traveled on British warships to the Bahamas. The West Indies Packet Service actually began postal services, however, in 1702 when it ran routes between the West Indies, including the Bahamas, and the American southern colonies as well as to England. This system was partly an independent merchant activity and partly an activity of the British navy, the Admiralty. This resulted in much confusion and animosity that was finally settled with the appointment of a couple very powerful private shipping companies. The Cunard Line ran the postal route successfully for a lengthy period of time. Hand stamps served as evidence of payment of postage fees until the first consignment of British stamps arrived in 1858 and were used for a year when the colony became able to assume the responsibility of printing its own stamps. The first stamps were all cancelled “A05” an indicator that they were from the Bahamas.



Bahamian Hand Stamps

The first Bahamian stamp was engraved and printed by Perkins, Bacon & Co. and included the “Challon” portrait of Queen Victoria, also found on early Tasmanian and Nova Scotian stamps. The stamp also includes illustrations of what was then the islands' principal exports, the pineapple pictured in the lower left and the conch shell in the lower right. On the scroll around the top of the queen's head is the term “Interinsular Postage,” indicating that the penny postage stamp (Scott Number 16) was good only within the Bahamas Islands, not for “overseas” or imperial postage. London controlled the overseas mail until 1860. The Challon portrait had been executed in 1837 by Alfred Edward Challon, a Swiss artist from Geneva who had been appointed “Painter in Water Colours to the Queen.” It had been given as a wedding present to the queen by Prince Albert. The original painting has been lost. In 1861 different values using the Challon were issued. A lithographed series of a more common Victorian stamp was produced by the De La Rue firm, an example (Scott Number 28) of which is above next to the Challon stamp. Note the pineapple and the conch shell in the corners.



The Challon Portrait of Queen Victoria



Scott Number 33



High above the capital city of Nassau towers Bennett's Hill, the site of the old Fort Fincastle. The approach to the old fort is by path from the city into a rocky gorge with sheer walls and beautiful tropical shrubs. The path goes up 66 steps cut out of stone and is known as the Queen's Staircase. A series of stamps celebrating this famous stairway was issued in 1901. A picture of the Queen's Staircase appears on Scott Number 33.

Also in 1901, a series of stamps depicting the new King, Edward VII, was issued. These incorporated the traditional Bahamian symbols, the pineapple and the conch shell. A series celebrating Edward's son, George V, was issued in 1910 and was very similar in appearance, and both faced the left.



In 1915, the Bahamas concluded an unusual agreement with Canada, in which the two countries arranged special delivery services by exchanging stamps, this being done for the benefit of tourists visiting from Canada. The Bahamians accomplished by overprinting 5d Staircase issues with "SPECIAL / DELIVERY" and sending them to Canada, where they were on sale in four post offices (Ottawa, Toronto, Westmount, and Winnipeg) for 10 cents each. The arrangement was short-lived, with only about 430 overprinted stamps being sold in Canada while the arrangement was in effect.

The green half penny to the left is an example of the series issued for the new King, George VI, in 1938. Meanwhile, in 1929 a series had commemorated both the bicentennial of the representative assembly and the 300th anniversary of the granting of the islands to a nobleman by King Charles I. The series, an example of which is to the right, depicts a British ship defeating pirates thusly establishing royal sovereignty over the Bahamas.

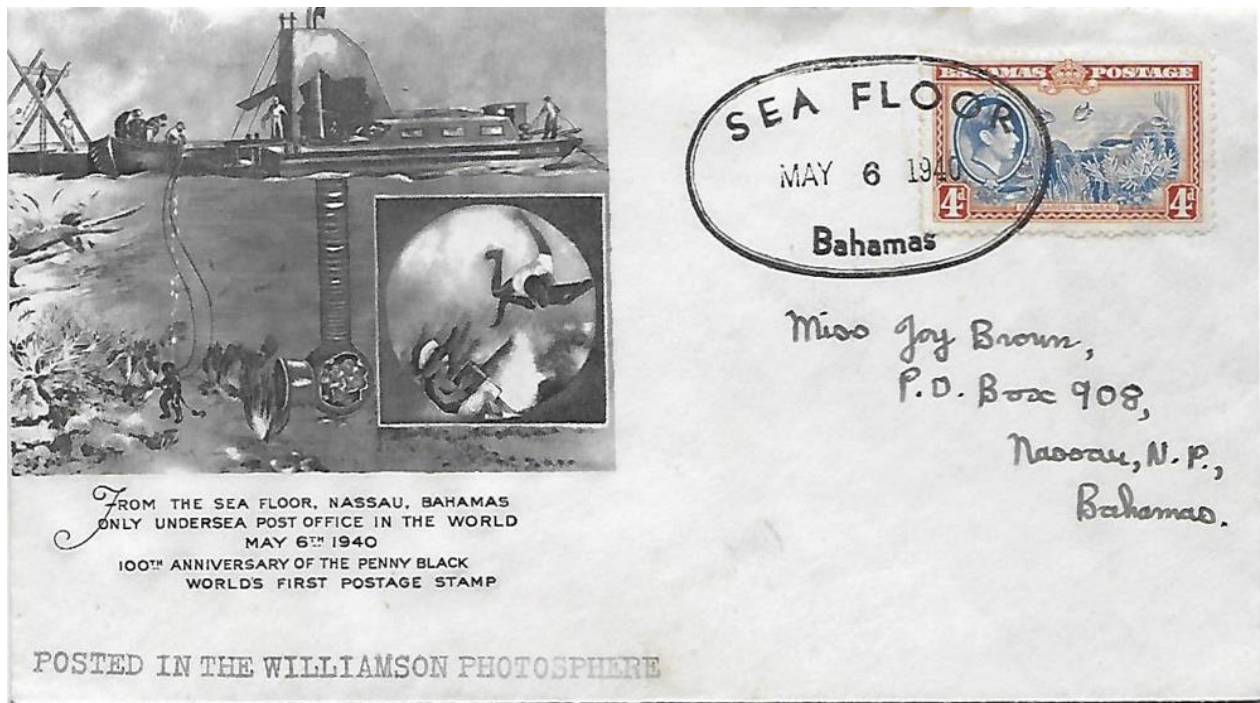
In 1935 a stamp designed to celebrate the coming of airmail to the Bahamas was issued with George V's portrait and it was re-issued in 1938 with the head of King George VI. This colorful stamp depicts a group of red flamingos flying near the southwest point of Great Inagua Island with a conical white lighthouse in the background. The scarlet hued flamingo has been described as the "King of the Bahamian birds." Christopher Columbus is believed to have written a reference to it in the account of his first voyage. Although occasionally eaten by the natives, the Spanish left them alone referring to them as "Flying Crucifixes."

Page 8



Contemporary Bahamian Letter Box

Mr. John E. Williamson, a photographer from Nassau, developed a flexible metal tube about 4 feet in diameter that was sunk into the sea to which a room-like “photosphere” was attached at the bottom. Photographs could be taken from this glass enclosed structure. The government was very interested in this adventure and set up a temporary post office inside the photosphere from which covers were postmarked. The cover below illustrates this with a nice cachet and an interesting postmark.



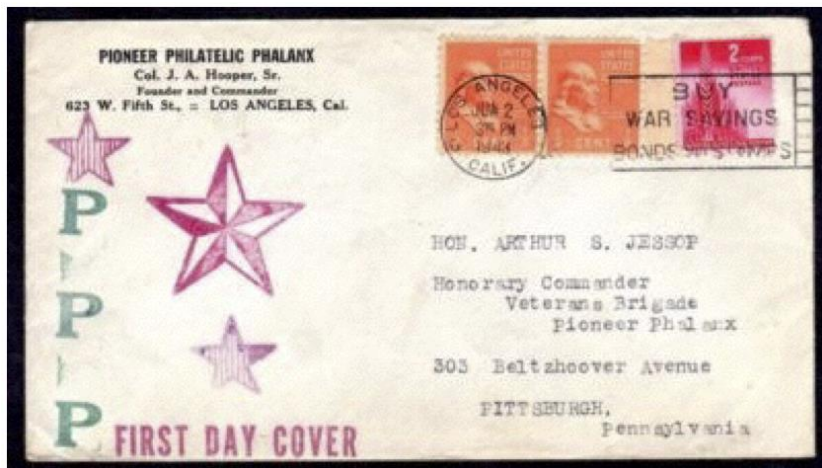
The Crown Colony of Bahamas became the Commonwealth of the Bahamas, becoming an independent country in the British Commonwealth in 1973, and has since had an active stamp issuance program with a variety of topical issues.

[Return to August Contents](#)

[Go to WSC Home Page](#)

The Pioneer Philatelic Phalanx and the Old Cowtown Museum by Jeff Lough

The November 10, 1943 Wichita Eagle reported that **Adrian Amabee Sautter**, age 90, of 334 North Yale in Wichita had claimed to be the oldest philatelist in the United States. Mr. Sautter had been born in Switzerland and began collecting in his twenties. He had a display of Red Cross stamps that he had arranged in the shape of a cross. Mr. Sautter had belonged to the Pioneer Philatelic Phalanx (PPP). He was also a member of the American Philatelic Society. To be a member of the PPP one had to have collected stamps in the 19th century. The number of remaining members is far fewer than the number of hairs on top my head. Members were given military titles. Sautter was a “commander.” The organization had no dues or periodical. It met at other organizations' conferences. There is a note in the *Canadian Military Mail Study Group Newsletter*. (No. 150. May, 2001, Pp. 558-559). that the founder of the PPP had been imprisoned for throwing his wife off a train. The cover below does not identify Mr. Sautter but was mailed by the PPP's leader to another “commander” in Pittsburg, Pennsylvania and documents the existence of this interesting organization. The hand-hewn, cottonwood log cabin pictured in the lower far left originally stood on the Chisholm Trail several miles south of present-day Clearwater, Kansas. It was built on the south bank of the Ninnescah River circa 1865 by an unknown squatter while the area was still considered “trust lands.” When the trust lands were opened for settlement, a man named Kincaid filed a claim on the land occupied by the cabin and lived there with his family. He sold the property in 1878 to **Adrian Sautter**, the above named immigrant from Switzerland. Sautter built a new frame house adjoining the cabin and the cabin was then used as a summer kitchen. By 1934 the cabin had been completely incorporated into a larger house, which accounts for its preserved state. In 1969 the structure was donated to the Old Cowtown Museum in Wichita by Sautter's son, Louis A. Sautter.



Old Cowtown cabin of the Sautter's

[Return to August Contents](#)

[Go to WSC Home Page](#)