

Wichita Stamp Club Newsletter

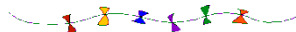


Vol. 84, No. 4, April, 2016

Neal E. Danielson
Editor



"Go Fly A Stamp"



Click on a link below in order to go directly to the article.

[Stone of Tizoc](#)

An artifact depicted on Mexico's 1934 definite series

[A philatelic tour of Harper County, Kansas](#)

[Kookaburras](#)

[Travel Kansas](#)

A visit to Potwin, Kansas

[Don't Sweat the Small Stuff](#)

Number 71 in the series

[Sven Hedin](#)

The Chinese commemoration of his scientific expedition to northwest China

[Pigeon Air Mail](#)

[Go to WSC Home Page](#)

The Stone of Tizoc *by Jeff Lough*

When Cortez and his soldiers first visited the 5 story pyramid in the center of Tenochtitlan, now Mexico City, they found on top of the pyramid a paved area in the middle of which stood a huge carved stone. This stone was the focus of the Aztec religious and political rite of human sacrifice. The Spanish military and religious leaders buried the stone when they destroyed the pyramid so that it would not be a focal point of native activity. A Cathedral was built on the site. Three hundred years later workmen digging near the Cathedral discovered the stone and began to break it up for paving blocks. Cathedral authorities rescued a chunk of the stone and it was deposited in Mexico City's National Museum where it currently resides.

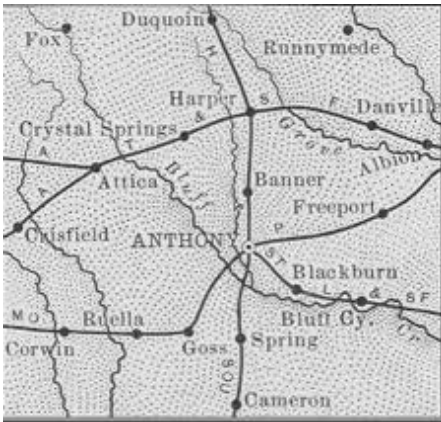
Called the Stone of Tizoc, after the seventh Aztec king, it is pictured on the forty centavos stamp of Mexico's 1934 definitive series (Scott Number 848) and has been re-issued with varying watermarks. (Scott Illustration Number A116) The face and rim of the stone are covered with sculptured figures in low relief that represent the military victories of Tizoc over neighboring tribes and nations. The cup-shaped concavity in the center of the stone's face is presumed to have held the heart of the sacrificed victim. Around this cup are many symbols of the Aztec god Huitzilopochtli, the god to whom the pyramid was dedicated. It is believed that the stone was probably carved in 1484.



[Return to April Contents](#)

[Go to WSC Home Page](#)

A Tour of Harper County *by Jeff Lough*



The original organization of Harper County was possibly one of the biggest frauds in county government history. In 1873 a group of three men organized Harper County, designating the then fictitious city of "Bluff City" as the county seat. The petition for organization used 800 names out of a Cincinnati telephone directory to represent as residents of Harper County. The petitioners absconded with \$60,000 in cash from the sale of bonds backed by the State of Kansas. An investigation by state officials found that the money had not been spent to build a county courthouse as had been indicated and that the organizers of the fraud were nowhere to be found. Real settlers began arriving in large enough numbers in 1877 and the county was organized for a second time in 1878. In an election in 1879, Anthony won as county seat even though 2,960 votes were cast in a county with 800 legal voters.



A town named simply Bluff was established in the 1870s in the area about 14 miles southeast of the county seat, Anthony. During the early years the Kiowa Trail, that was used to haul buffalo hides from the Indian Territory to Wichita, passed near Bluff on through to the northeast corner of Harper County. The community took its name from Bluff Creek which flowed close by. A post office in the area was authorized on February 1, 1887 and was called Bluff Creek. The first postmaster was Samuel G. Reid. The cover to the upper right is Scott #U167 with a very nice double circle postmark and special star killer.. On January the railroad changed the name from Bluff Creek to Bluff City. The post office continues to operate with that name and a current photo is above. Bluff City was a station and shipping point on the Kansas Southwestern Railway. In 1910 Bluff City had a bank, a newspaper, a money order post office with one rural route, express and telegraph offices, a telephone exchange, schools, several churches, several mercantile general

stores and a population of 307. When the 2010 census was reported, the city population was 65. Nowadays there are no stores but there are some active oil and gas pipeline storage warehouses and workshops. The Bluff City cover above is U358 postmarked with a simple circular date, time and location postmark and a shoe print killer. Corwin was a town that had a population of 125 in 1910, was on the Missouri Pacific Rail Road and had a money order post office, telegraph and express offices and a hotel. It was the principal shipping point for southwest Harper County. The cover below has a two cent SN 210 postmarked with a fancy oblong town and date cancel with a 1905 cancellation and a manuscript killer. Nowadays Corwin has a grain elevator and three homes. The grain elevator is below. There is a remnant of a large warehouse close to where the train went through. The contemporary town site is remarkable for its large number of stone and concrete block foundations amid a fairly large forested waste area. The post office was established on August 20, 1883 and discontinued on June 28, 1957. The town's first postmaster, Oscar Corwin, likely gave his name to the town.

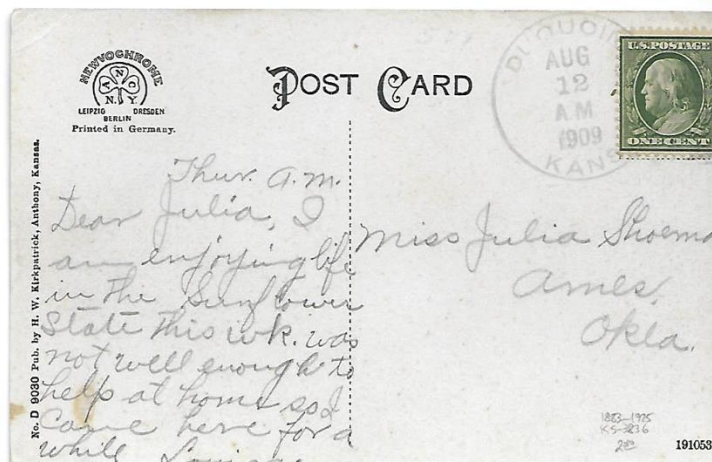


Bluff City Post Office

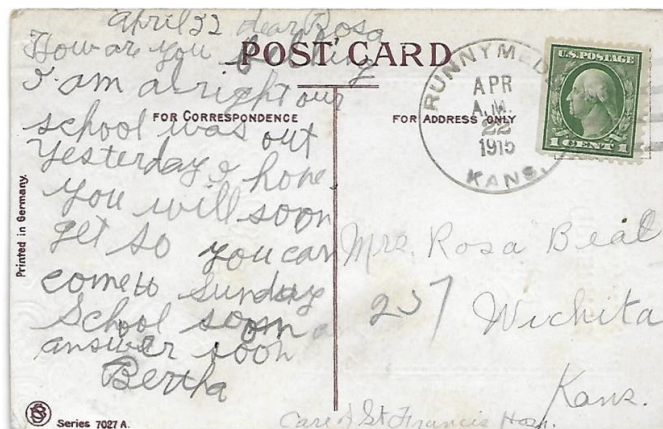


Grain Elevator

Duquoin is located 18 miles northwest of Anthony right on the county line with Kingman county. It was on the Santa Fe Railway and continues to be served by the AT&SF successor, BNSF. In 1910 Duquoin had a money order post office with one rural route, two grain elevators, a flour mill and some general stores and a population of 75. Now there is a grain elevator and about 10 homes. The penny post card below with the one cent Franklin Scott Number 331 is cancelled with a simple circular date and location postmark.



Runnymede is one of the more interesting towns in Kansas. On the previous page is a photo of Runnymede's fancy tennis team in 1901. Runnymede's post office was established on June 20, 1879 with George Francis as postmaster and ended on December 31, 1944. Runnymede was founded by two British citizens in order to provide an opportunity for upper class young British men to learn to be farmers and ranchers. Some of these gentlemen were heirs to royal British titles. The town was known for its polo matches, British-type hunts and prize fighting. The Topeka Capital of January 30, 1927 reported a rumor that Edward, Prince of Wales and Andrew Carnegie had once visited the settlement. The founders funded the establishment of stage lines to the nearest railroads to the southwest to Harper and north to Norwich. The experiment ended after three years and the properties were sold to more ordinary Kansans. The town rapidly declined. In 1910 Runnymede had a population of 19 and a money order post office. There are no buildings or other indications of the town at this time. The accompanying Runnymede cover has a large circular postmark with the typical Doane 4-bar killer on Scott # 405.





Turning a Corner



Anthony Post Office

The post office in Anthony, the county seat, has a mural by Joe Jones Jones completed in 1939 as part of the Works Progress Administration artists program. The mural *Turning a Corner* depicts wheat farmers at work during harvest. Anthony's representative cover contains SN 787 and is postmarked with a common 6 bar wavy killer and a simple circular date, time and location postmark from July 29, 1937. It is addressed to a popular mutual aid society insurance office in Lawrence, Kansas.



[Return to April Contents](#)

[Go to WSC Home Page](#)



Kookaburras are terrestrial tree kingfishers of the genus *Dacelo* native to Australia and New Guinea, which grow to between 28–42 cm (11–17 in) in length. The name is a loanword from Wiradjuri *guuguubarra*, onomatopoeic of its call. The single member of the genus *Clytoceyx* is commonly referred to as the shovel-billed kookaburra.

The kookaburra's loud call sounds like echoing human laughter. They are found in habitats ranging from humid forest to arid savanna, as well as in suburban areas with tall trees or near running water. Even though they belong to the larger group known as "kingfishers", kookaburras are not closely associated with water. For a laugh visit the Kookburra Wikipedia site and click on the button.

The Kookaburra was featured in several of the earliest Australian stamps.

[Return to April Contents](#)

[Go to WSC Home Page](#)

TRAVEL KANSAS—NORTH TO SOUTH—EAST TO WEST by *Neal E. Danielson*



Figure 1

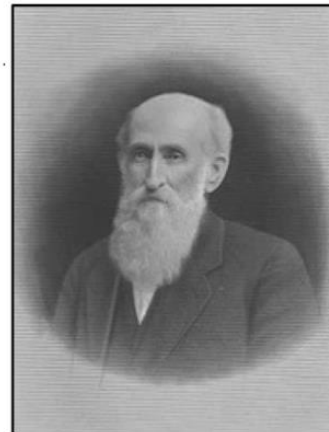


Figure 2



Figure 3

Travel Kansas—Potwin is located in Butler County, Kansas (Figure 1) and was named for land owner Charles Potwin. Potwin was incorporated on April 8, 1885 and became a Missouri Pacific Railroad Station negotiated by the Father of Potwin, William I. Joseph (Figure 2). Mr. Joseph was born on Feb. 14, 1835 in what is now the State of West Virginia near Middlebourne, Tyler County. His father Waitman J. Joseph was a soldier in the war of 1812 and settled in Tyler County where he became an influential man. He owned a flour mill and dealt in lands and lumber. In 1868 he became a land investor in Shawnee and Butler Counties in Kansas. William's father settled in lands near Potwin and became a very successful farmer and influential citizen. William attended schools in West Virginia and trained in agricultural pursuits. After arriving with his parents he too settled in Potwin. He purchased 160 acres of land and following his agricultural education raised cattle until 1900. Soon after his arrival in Potwin he became an agent for Charles Potwin who resided in Zanesville, Ohio and acquired the land where Potwin was located and became the major resident builder of the village (Figure 3) of Potwin.

Mr. Joseph would serve the village of Potwin as justice of the peace for around twenty-five years. He was an excellent negotiator and many of the local characters' disputes were settled out of court. His private affairs were extensive and his loyalty to the state and Butler County was well known in the area. He founded the Potwin State Bank in 1904. He and his son Rufus became land dealers. In 1906 he visited Rhodesia, South Africa and purchased 25,000 acres of land and on his second trip to the country in 1909 he purchased and additional 30,000 acres adjacent to the earlier purchase. The land consisted of grazing land and only a

small portion (around 10,000 acres) was conducive to cultivation. Mr. Joseph made these trips to Africa with most of his family. His son George F. Joseph became the manager of the family's land in Rhodesia. Butler County is well known as an oil producing County and Potwin enjoyed the oil fields' prosperity. The Vickers Oil Refinery was established by John (Jack) Vickers in 1920. His first lease was that of the Parris Farm located about 10 miles north of Potwin. This oil field produced around 16,000 barrels a day during the 1950s. Mr. Vickers built a large mansion east of Wichita (now in the city limits) called "Vickridge" and his estate would eventually become Kapaun-Mt. Carmel High School.

The post office was established in Ayr on July 12, 1875 and moved to Potwin on September 22, 1885 (Figure 4) adjacent to the Bagley Hotel.



Figure 4

The first Church established in Potwin was the Christian Church on Violet Street (Figure 5). Other denominations would follow, such as the First United Methodist Church, United First Methodist and Potwin Presbyterian Church. The Christian Church shown in Figure 5 can be identified in Figure 3 showing the steeple to the far left. Today the old Christian Church has been replaced with a more modern structure (Figure 6).

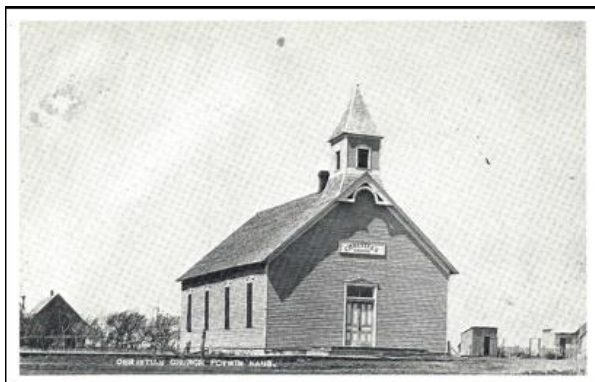


Figure 5



Figure 6

In 1961 seven schools merged to become Frederic Remington High School. Heated discussion transpired between Whitewater and Potwin which resulted in a vote with the central location of Brained becoming the site of the High School.

Potwin is located a short distance from the Whitewater River, that provides an abundant recreational opportunity for its citizens. Most species of game can be found near Potwin, including pheasant, prairie chicken, quail, dove, deer, migratory birds along the river, fox, raccoon, coyotes, wild turkey, squirrel and cottontail rabbits. An annual Watermelon Festival transpires on the fourth Saturday in August. Additional information on the Festival can be found on Potwin's Facebook page.

[Return to April Contents](#)

[Go to WSC Home Page](#)

Don't Sweat the Small Stuff by Neal E. Danielson

This is the 71st in a series of articles relating to small post cards and small covers so if you have any in your collection that you would like to share please let us know.

This Small Stuff comes to you from Lawrence, Kansas (Figure 1) by way of Stoddard, New Hampshire thanks to **Jeff Lough**. This Small Stuff measures 5 ¼ inch by 2 7/8 inch and is franked with a 3¢ George Washington stamp (Scott #136). This Small Stuff will cover Lawrence, Kansas in two parts but the addressee will be different in each part. Since no postal cancellation bears a year date the date of the 3¢ stamp issue is close enough, that being March of 1870.



Figure 1

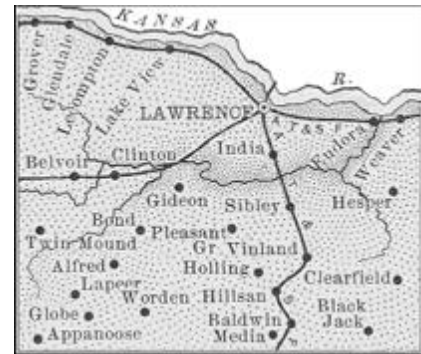


Figure 2

Lawrence is located in Douglas County (Figure 2), was along the Atchison, Topeka and Santa Fe Railroad adjacent to the Kansas River, and is the County Seat. Lawrence history dates back to when the County was part of the Shawnee Indian Reservation. The Kansas River was the sight of the Oregon Trail that followed the River for many miles and Mount Oread was used as an outlook and a landmark for travelers westward and settlers in the New Territory that opened for settlement as a result of the Kansas—Nebraska Act of 1854. Most of the settlers that arrived as a result of organizations and individuals that were interested in Kansas becoming a Free State and not a Slave State. Two prominent individuals involved in the New England Emigrant Aid Company, Dr. Charles Robinson and Charles Branscomb arrived in the vicinity of Lawrence in July 1854. The Company (Pioneer Party) left Massachusetts on July 17, 1854 and arrived on August 1, 1854. A second party arrived on September 9, 1854. The settlement was officially named Lawrence City on October 6, 1854. However, prior to this naming of the City, it had been called Wakarusa, Yankee Town, New Boston, and Plymouth, but since a man by the name of Amos A. Lawrence, was a major benefactor of the Emigrant Aid Company. The main street was named Massachusetts the origin of the pioneer parties.

The first Post Office opened on January 13, 1855 with Carmi W. Babcock serving as Postmaster. The Plymouth Congregational Church was started in September 1854 by a missionary sent to Kansas, with Reverend S. Y. Lum, serving as pastor, it was the first church established in Kansas Territory. Shortly after the settlement of Lawrence became a reality two newspapers emerged: *The Kansas Pioneer* and the *Herald of Freedom*. The *Kansas Free State* saw the light of day in January 1855.

A group of Missourians entered Kansas in an attempt to attack Lawrence, but John Brown and James Lane engaged Lawrence residents into an army that erected barricades to ward off the attack and the Missouri army retreated. However the Douglas County Sheriff Samuel L. Jones and his southern sympathizers would continue to interfere with the Free State citizens and Sheriff Jones was even shot once when he tried to arrest free-state settlers. On May 21, 1856 Sheriff Jones and his posse of about 800

sympathizers converged on Lawrence. The home of Dr. Robinson on Mount Oread became headquarters for the federal marshal and printing presses were damaged in all three of the Newspapers and some thrown in the River. The Free State Hotel, constructed in 1855 and owned by Colonel Shalor Eldridge was destroyed during the sack of Lawrence (Figure 3). Col. Eldridge would rebuild the Free State and even added an extra story, noting that he would rebuild it again if it were attacked. When the Civil War was declared Lawrence was still a magnet for increased conflict. William Clarke Quantrill and some 400 Confederate guerillas converged on Lawrence at dawn on August 21, 1863 and most of the homes and businesses were destroyed by fire and close to 200 men and boys were murdered. The Free State Hotel was destroyed during Quantrill's raid but when Eldridge rebuilt the Hotel he named it the "Eldridge Hotel" (Figure 4)



Figure 3



Figure 4

Figure 4

The Small Stuff Cover in Figure 1 was mailed sometime after March 1870. The Small Cover was addressed to an individual in Stoddard, New Hampshire. Stoddard is located in Cheshire County, the territory was first granted to Colonel Sampson Stoddard in 1752; who lived in Massachusetts. The settlement was known as Limerick and changed to Stoddard in honor of the Colonel in 1774 when it was incorporated. The Colonel never lived in Stoddard, but one of his surveying assistant was Benjamin Pierce, the father of President Franklin Pierce. The first settlers in the village transpired in 1768 by immigrants from Derry, Ireland. The first Schoolhouses were built in 1792 and the first post office was opened in 1822 with Isaac Duncan serving as its first Postmaster.

Between the years 1842 and 1873 there were four glass manufacturers doing business in Stoddard that employed around 800 people. Stoddard glass is noted for its deep amber colors and designs and is highly prized by collectors. The heavily wooded area in and around Stoddard supplied the industry's need for 1,200°F (650°C) temperature required to melt the sand into glass. The coveted glass products were manufactured in unique hues: the olive green and amber was produced with Manganese and the red-amber glass was created with oxide of gold (See Figures 5 - 7 for examples). The Granite Glass Co.; Stoddard Glass Works; and Stoddard Glass Factory were the major producers of Stoddard Glass. As time passed new technology emerged in the early part of 1870s when chemistry needed to create clear glass in large quantity came into existence and gas and coal were used instead of wood to create the required temperature to melt the sand into glass. The silica sand found in the Stoddard area did not lend itself to creating clear glass that became in demand following the Civil War.



Figures 5 - 7

The area in and around Stoddard, New Hampshire have preserved stone arch bridges (Figures 8 and 9). This twin arch structure built without mortar and sustained solely by expert shaping of the archstones is typical of a unique style of bridge construction employed primarily in the Contoocook River Valley in the first half of the 19th Century. These bridges are a significant part of our American architectural heritage. Although New Hampshire has a large number of arch stone bridges, Cowley County, Kansas has laid claim to being the Stonearch bridge Capital.



Figures 8 and 9

[Return to April Contents](#)

[Go to WSC Home Page](#)

Northwest China Scientific Expedition of Sven Hedin by Jeff Lough

In 1932 the Republic of China issued 4 stamps to commemorate and help pay for a scientific expedition to western and northwestern China led by the Swedish explorer Sven Hedin. 25,000 stamps of each denomination were at first offered for sale and use as valid postage stamps. Ones that were not sold were given to Sven Hedin to sell as sets for the equivalent of \$5.00 to help finance his expedition. So, in effect, we have an interesting twist on the notion of semi-postal stamps. The four stamps are of different colors and denominations with the same design. They show camels at a camp with the expedition flag and bear the Chinese text: “Postal Service of the Prosperous Middle Kingdom” and in Latin underneath: “Scientific Expedition to the Northwestern Province of China 1927 – 1933.” A painting in the Beijing Palace Museum entitled *Nomads in the Desert* served as the model for the vignette.

Sven Hedin lived from 1865 until 1952. He was a partially trained topographer but worked primarily as a travel writer who illustrated his own works. Hedin was somewhat fluent in several languages and dialects. He was one of the first explorers to use indigenous scientists and research assistants in his expeditions. He was the first known modern European to explore Xinjiang/ Chinese Turkestan/ northwestern China and the northern parts of Tibet. Hedin was on the Nobel Prize selection committees in science and literature. His scientific documentation and popular travelogues illustrated with his own photographs, watercolor paintings and drawings; his adventure stories for young readers; and his lecture tours abroad made him world famous. Hedin was highly honored by Swedish, Chinese, Russian and German rulers. He sided with the Germans in the first world war and was exploited by the National Socialists in the era of the Third Reich because he readily communicated with their leadership. Some of the English translations of his works are available without charge online through Project Gutenberg.



Sven Hedin circa 1910

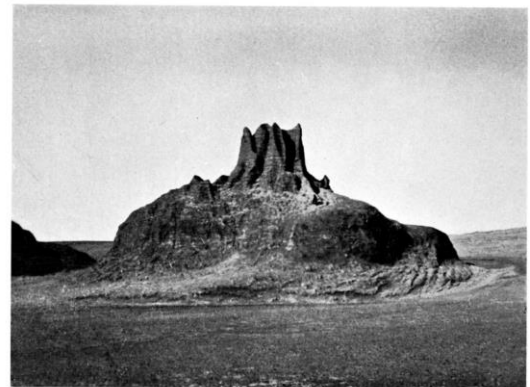


Photo taken by Hedin of an ancient structure in northwestern China

[Return to April Contents](#)

[Go to WSC Home Page](#)

Pigeon Air Mail Stamp by Jeff Lough

The accompanying illustration from a newspaper feature syndicated in the 1920s called “Stampities” by J. W. Clifford is of a stamp used on mail flown between New Zealand and Marotiri Island in 1925. The mail was carried by pigeons.



[Return to April Contents](#)

[Go to WSC Home Page](#)