

Wichita Stamp Club Newsletter



Vol. 83, No. 5, May, 2015

Neal E. Danielson
Editor



"Go Fly A Stamp"



Click on a link below in order to go directly to the article.

[Travel Kansas](#)

A visit to Beattie in Marshall County

[Postal History of Kingman Count Part II](#)

[Nashville](#), [Spivey](#), [Rago](#), [Adams](#), [Norwich](#), and [Brighton](#)

[Don't Sweat the Small Stuff](#)

Number 61 in the series!

[Go to WSC Home Page](#)

TRAVEL KANSAS—NORTH TO SOUTH—EAST TO WEST by Neal E. Danielson



Figure 1
Marshall County Railroad Map ca1899

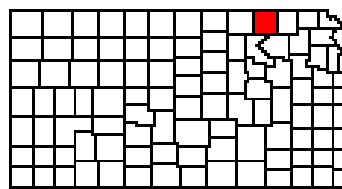


Figure 2
Marshall County

Travel Kansas—Beattie located in Marshall County, Kansas (Figures 1 & 2). The city has often been referred to as “The Milo Capital of the World” and hosts to an annual “Beattie Milo Festival” based on a proclamation in 1970 by then Gov. Robert Docking and is celebrated annually in August. The settlement was first laid out in 1870 and was named in honor of the 8th Mayor of St. Joseph, Missouri, Armstrong Beattie.

The first post office opened in Beattie, Kansas on July 10, 1881, in a drug store built by J. J. Sheldon who was appointed the first postmaster (Figure 3). The post office rural route was established in 1901 with R. R. Wilcox as the first route carrier. At first the route was 25 miles long, and then a second route of 27 miles was added in 1902 with Guy Totten as the first route carrier. Eventually the two routes were combined to reach out 62 miles as the longest route in Marshall County. During the war years 1942-1949 there was a freeze on rural routes so substitute carriers were use.



Figure 3
Hawks Drug Store-Beattie, Kansas-ca1909

A Scott #U523 1¢ embossed stamped envelope franked with an additional 2¢ George Washington stamp (Scott #707) to make up the 3¢ rate and tied to the cover with a four-bar circular date stamp from Beattie, Kansas on Feb. 20 1934 (Figure 4) and mailed to The Federal Land Bank in Wichita, Kansas.

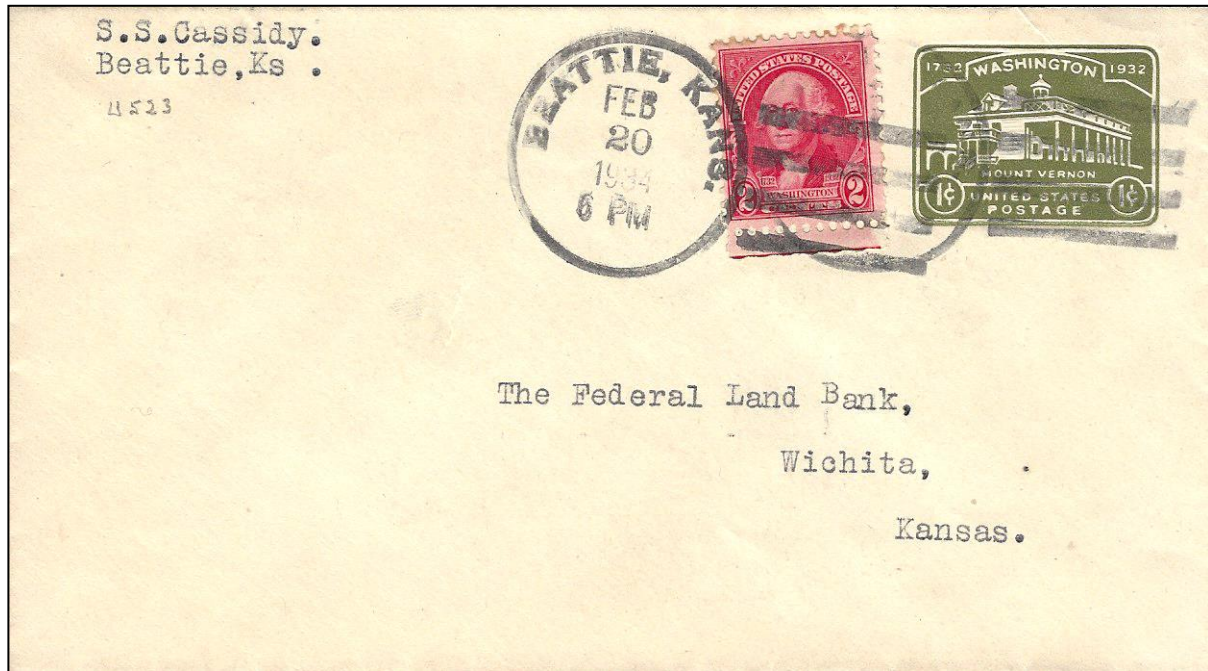


Figure 4
Beattie, Kansas Cover 1934

Beattie’s claim to fame resulted from a couple of events; one being newspaper articles on April 30, 1899 announcing that Beattie was a Kansas town run entirely by women and the other event was a Bank Robbery that took place in 1910.

The two newspapers of Beattie; *The Eagle* and *The Palladium*, carried the story. It all started when the town elected a woman mayor on April 3 followed up by an all women city council. The stories focused on the closing of saloons by women bent on correcting the problem, when in fact the town had only one saloon. Of course illegal saloons flourished in Marshall County at the turn of the century. *The St. Louis Star* set the tone for most of the stories; “A man can’t call his soul his own in Beattie, Kansas, women are running things and have tamed everything that wears pants.” The women’s ticket was referred to as “The Broom Brigade”; “Mamas Ticket”; and “Soda Water Bottles”. There were numerous men in the town that supported the ticket as they wanted to see the saloon in the hotel basement closed (Figure 5) since they had been unsuccessful in achieving this goal themselves.



Figure 5
Beattie Hotel-ca1920

The bank Robbery event transpired on November 11, 1910 when the Beattie State Bank was robbed. Apparently three of the six men from Nebraska came into town about a week before the robbery to survey the area as they left the impression they were job hunting, spending time in the St. Joseph and Grand Island Railroad station (Figure 6). A getaway car was parked a short distance from the bank on the night of the robbery. Some of the men were stationed at strategic street corners while two men broke the plate glass window of the door leading into the bank. Upon entering they drilled a hole in the safe to set an explosive charge. The first attempt failed when the fuse did not stay lit so they had to reenter the bank. Meanwhile the town's people became aware of the robbery and were taking up arms to defend themselves.



Figure 6
Beattie, Kansas Railroad Station

The two men reset the charge and the ensuing explosion opened the safe as well as rocked the whole town. The men proceeded to collect the money and there were no electric lights so what light existed had been shot out by the men. However a gun battle ensued but they did not manage to capture any of the robbers at the time, but enough witnesses were present that recognized the robbers and they were later captured and stood trial in Beattie and sentenced to prison terms.

Racing was a major attraction in Beattie. The Hawk family from Missouri came to Beattie in 1880 as the first druggist in the city. They acquired farm land near Beattie and hired men to operate the farm. Their passion was race horses. They also raised purebred mules, cattle, hogs, along with horses. Their purebred horses and jacks were first class breeder race horses. They won numerous large stakes all over Kansas and Nebraska.

They organized the Beattie Racing Association in 1900 and would build one of the fastest tracks in Marshall County. Numerous individuals were living in and around Beattie owned race horses, some world class and well known at the time throughout the country. The Beattie Racing Association sponsored a three-day track meet each year with nationally renowned race horses. Actually the first track was built in 1895 and located west of the present site. At the time there were 100 race horses in Beattie and 35 owners. Harness racing was also popular with several trotters owned by Beattie residents.

A Mart Thomas owned a race horse named "White Eyes", that held the track record for the half mile at 48 seconds flat. Other named of race horses included: "Grey Elmont"; "Betty Ross"; "Zero"; "Slycoon"; "Craps"; all from Marysville. While Beattie enjoyed : "Judy Rice"; "San Remo"; "Honest John"; "Diamond Dick"; "Wine Glass"; "Little Tom"; "Nigger Babe"; "Beattie Jakes"; "Little Dolly"; "Black Tom"; "Little Sue"; "Over Again"; Relay Boy"; "Jimmy S. Umatella"; "Adonis"; "Anttaywood"; "Molly Knox"; "Roxy Ann"; "Little Pearl"; "Iva Parker"; "Molly Darby"; and "Skyrocket". Of the harness racing the one stand out was a horse named "Paxico" another was "Rubber Neck".

Marysville was the County Seat of Marshall County (Figure 7) and was popular during the Oregon Trail years and the Pony Express era; as was Beattie. As stated earlier Marysville was also heavily involved in horse racing and participated in the Beattie Racing Events. The railroad came to Beattie in 1870 known as the St. Joseph and Denver City Railroad and later as the St. Joseph and Grand Island Railroad.



Figure 7
Marshall County Courthouse

[Return to May Contents](#)

[Go to WSC Home Page](#)

A LITTLE POSTAL HISTORY FOR KINGMAN COUNTY, KANSAS PART 2 OF 2

By Jeff Lough

As we continue the postal history of Kingman County we travel along the southern Highway 42 from Nashville in the southwest to Brighton in the southeast.

NASHVILLE

Nashville was officially founded about 1888. It was named after Nashville, Tennessee. The first post office at Nashville was established in August 1887. The accompanying cover (Figure 1) was postmarked on June 17, 1896 and cancelled with a target killer and simple circular postmark. The two cent Washington workhorse, Scott Number 252, (Carmine, Type III) was used. It may have been a registered letter received in the Topeka post office one day later. Nashville was first known as Old Bross. A. V. Kennedy was the first postmaster and had a store, grain and coal business. The town also had a barber shop and hotel. Nashville has burned down three times. It was served by the Central Kansas and Western Railroad. A six room hospital was operated by a local doctor. Many Germans settled in rural Kingman County and they established a Lutheran school in Nashville. Nowadays Nashville is a very small bedroom community and shares with the several other communities in southern Kingman the presence of predominately oil field service industries and a location for homes for local industrial agricultural and oil field workers. Figure 2 is a photo of the current Nashville Kansas post office.

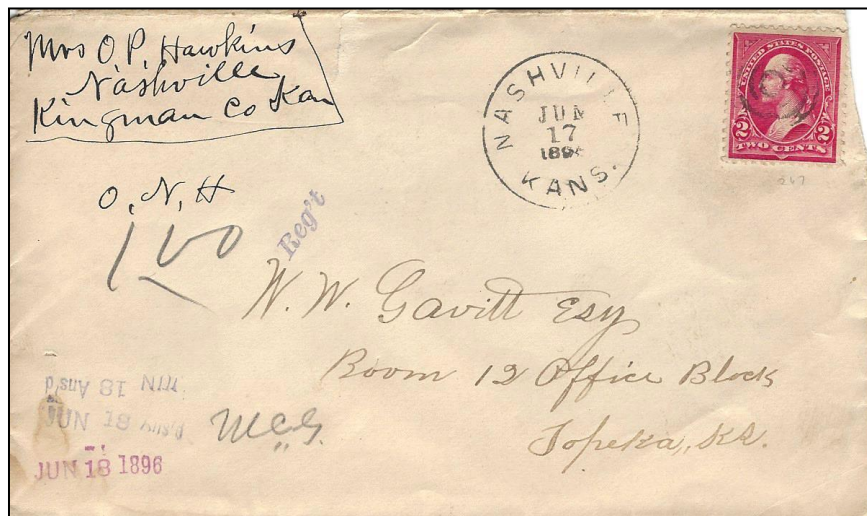


Figure 1
Nashville Cover 1896



Figure 2
Nashville, Kansas Post Office

SPIVEY

Spivey was named for Colonel E. M. (or R. E.) Spivey, a member of the founding Ark Valley Land Company. In 1886 the Santa Fe Railroad was built to the town site. A railway round house, depot, turntable, and station house were all constructed. By 1888 a hotel had been built that could accommodate 250 diners. The post office was first known as Leland with the name changing on Dec. 6, 1886 to Spivey. The accompanying Spivey cover (Figure 3) was postmarked with a circular location and date (November 25, 1898) cancel and a target killer on it pink Washington 2 cent stamp (Scott Number 248). It is believed that this is a registered letter sent to a prominent supplier of medical supplies in Topeka. It was received by the Topeka post office on November 26.

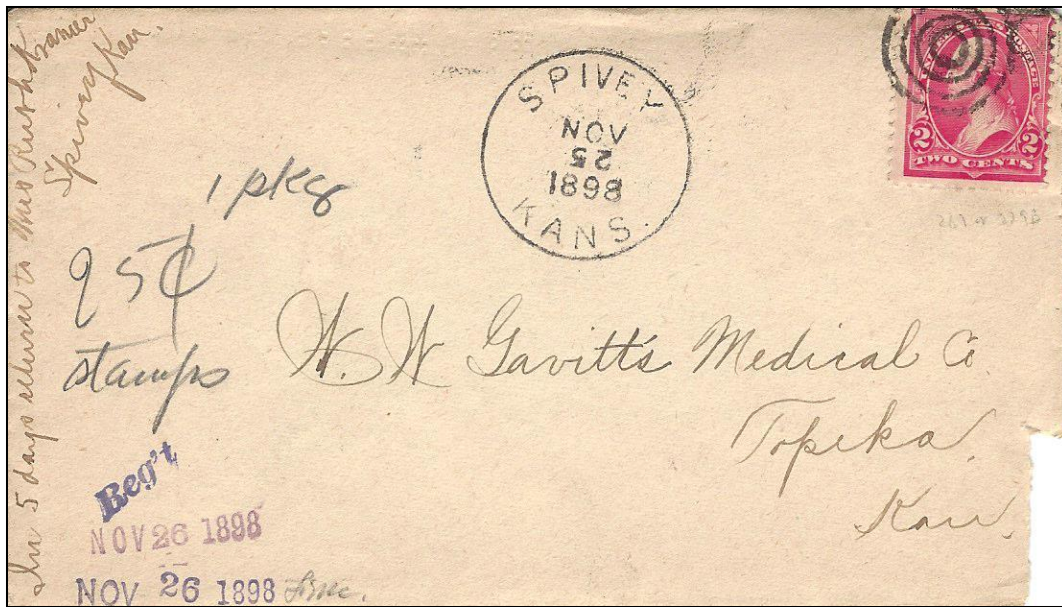


Figure 3
Spivey Cover 1898

RAGO

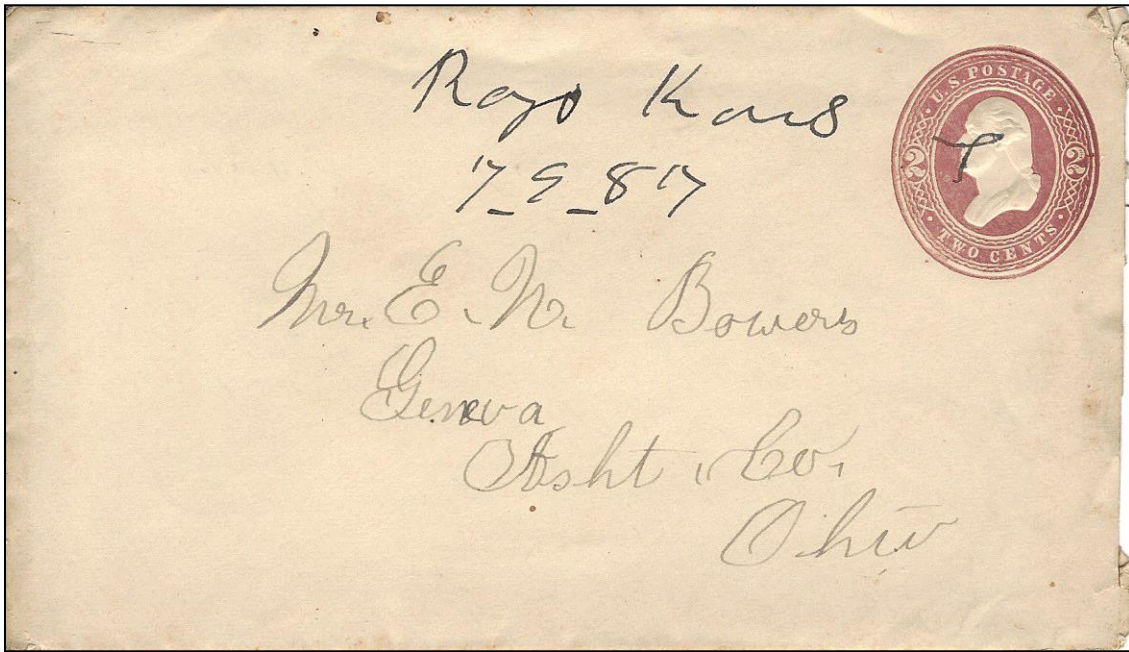


Figure 4
Rago Cover 1887

Rago is east of Spivey about 12 miles. It has moved 3 times. Rago once had a salt mine and a hotel. In 1883 James M. Baker became the first postmaster of Rago. Joseph Thomas became postmaster September 24, 1883. The communities served by the Pitt and Trenton post offices petitioned to have their postal services moved to Rago in 1887. The post office moved to its present location on January 1, 1956 when Ollie Blazer became postmaster. Santa Fe gave the nickname Doodlebud to the passenger train that went through the town. The accompanying July 9, 1887 cover (Figure 4) with a handwritten cancellation date and post office location has post master's scribble as a killer on it 2 cent postal envelope (Scott Number U298)

ADAMS

The city of Adams was named for Mr. A. C. Adams who lived in that community and was the first Canton Township trustee. Adams is due south of Kingman and east of Rago on Highway 42 in the southeast part of the county. Charles Wuensch built a store and applied for a post office that was established in 1887 when the Englewood railroad came through.

. At one time there was a little sod school house that operated 3 months out of the year three miles north and one mile east that had a post office named Mabel. Adams was the hometown of Clyde Vernon Cessna, the original founder of Cessna Aircraft. A mural on the outside wall of the Kingman County Historical Museum celebrates Mr. Cessna and his early endeavors (Figure 5). The shop where he built his first exhibition planes in 1913 – 1917 was on the family farm for many years. A wheat threshing business had provided funding for early aviation efforts. The accompanying cover (Figure 6) has a 4-bar cancellation on the U437 stamped envelope marked in the morning of May 13, 1919.



Figure 5
Mural Celebrates Mr. Cessna Early Aircraft

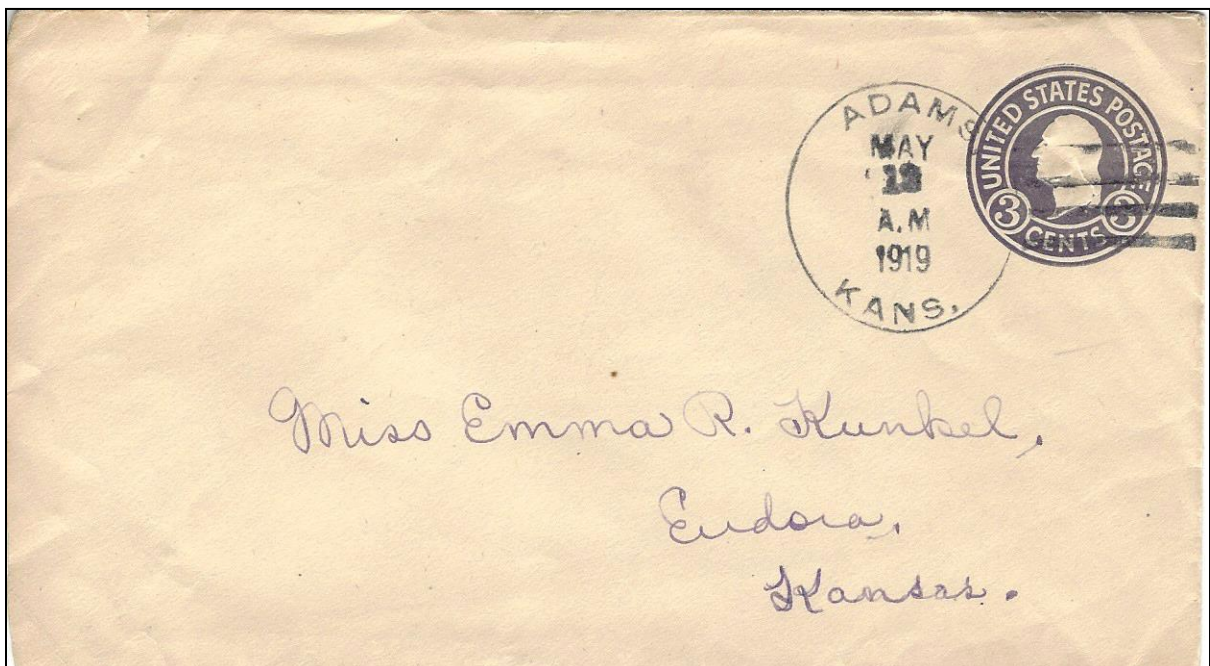


Figure 6
Adams Cover 1919

NORWICH

Norwich, was founded about 1885. It was named after Norwich, Connecticut which had been the home town of one of the founders, W. W. Robbins. The first post office was in the home of Squire Ferris, a dugout south of present day Norwich. Later the post office building was moved to Milton in far northwestern Sumner County. In Norwich the post office had been in the Carter Store in 1885, followed by the John Sills Building one block west of the Baptist Church, then the Skidmore building, the Schrag Home Service, and finally landed in it present location where a feed store was remodeled into a post office. A rural route was established at Norwich on August 1, 1904. The area covered 46 square miles with 105 houses on the route. It served 420 people on a 30 mile route. The salary was \$720 per month including "horse hire." The accompanying covers are each addressed to the same young lady and show the change in writing style and type of cancellation as the years went on. One cover (Figure 7, The Jefferson Scott Number 807) has the "tablet" style undated cancellation and the other (Figure 8) dated December 18, 1944 was barred oval cancellation on the 1 ½ cent Martha Washington, Scott Number 805.

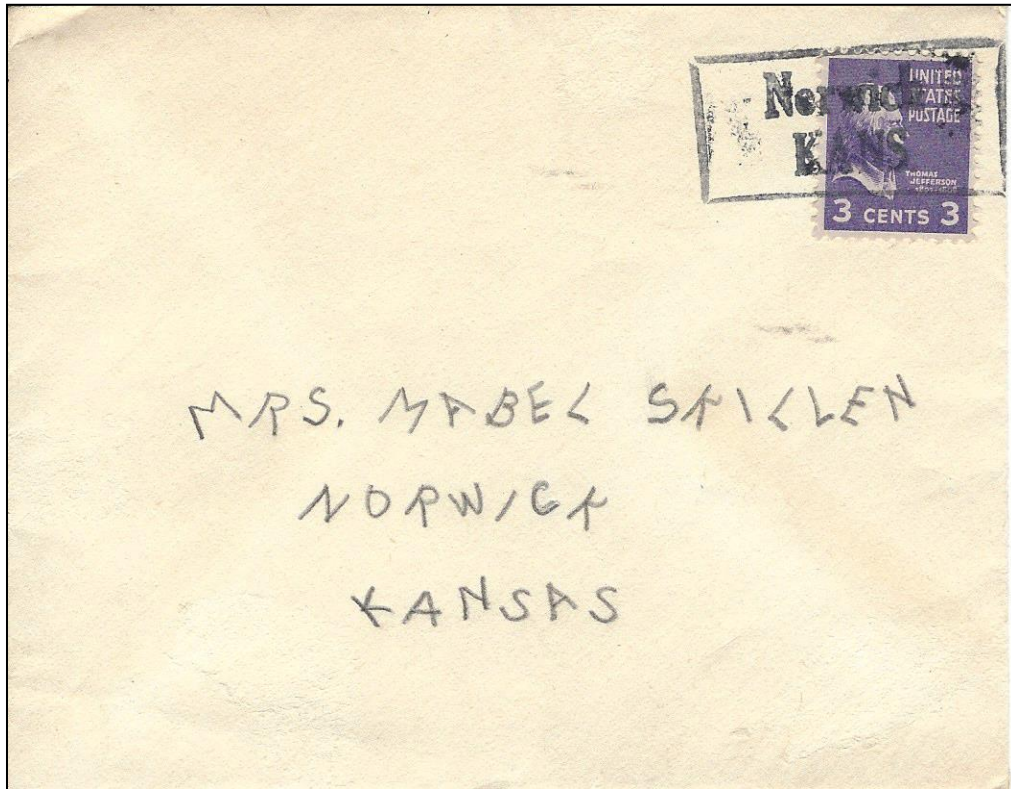


Figure 7
Norwich Cover Undated



Figure 8
Norwich Cover 1944

BRIGHTON

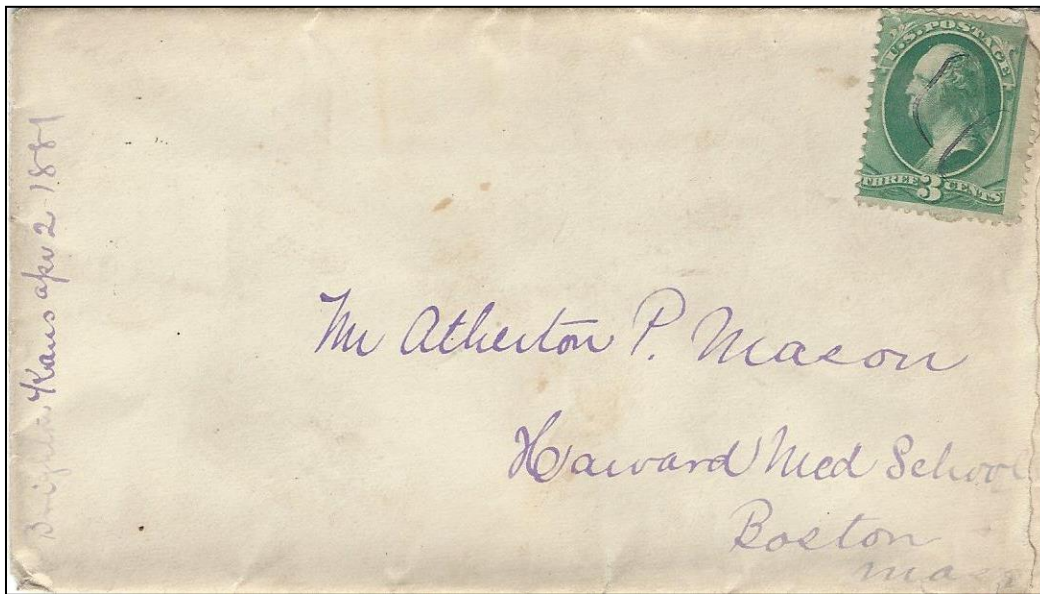


Figure 9
Brighton Cover 1881

Brighton was a post office and school in Allen Township north of Norwich. It was established on October 1, 1879 but was discontinued on October of 1886 leaving the township with no post office or trading post. Figure 9 shows a 3 cent Washington (Scott Number 184) with a manuscript date of April 2, 1881 and a lined postmaster killer. Daniel Strayer had served as the postmaster. After the closing of the post office, the mail was picked up and delivered through nearby Cheney.³

Kingman County continues to flourish with its large wind farm viewable from several of the small communities mentioned above in the southern part of the county, its thriving oil fracking industry and busy agribusiness farming operations.

[Return to May Contents](#)

[Go to WSC Home Page](#)

DON'T SWEAT THE SMALL STUFF by Neal E. Danielson

This is the 61st in a series of articles relating to small post cards and small covers so if you have any in your collection that you would like to share please let us know.

This month's Small Stuff comes to you from Warren, Pennsylvania (Figure 1) located in Warren County, by way of Quakertown, Pennsylvania and Cressman in Bucks County, Pennsylvania. The Small Stuff measures 3 1/8 inches by 5 3/8 inches and is franked with a 2¢ George Washington stamp (Scott #319) and tied to the cover with a parallel five-bar cancel postmarked from Warren, PA on Jan 19, 1907 and addressed to a Mr. Chas. Bartges, Cressman Bucks Co. Penn. A rec'd circular-date cancel from Quakertown, PA reflects a date of Jan 21, 1907 in the AM and transferred to Cressman with their circular four-bar cancel on Jan 21, 1907 in the AM (See note on page 12 in reference to Cressman). The Warren post office was called the Brokenstraw when it was established December 29, 1816 and was changed to Warren on December 4, 1819. At the time of our Small Stuff mailing a Starling W. Waters was serving as postmaster being appointed May 12, 1897 and replaced August 10, 1912.

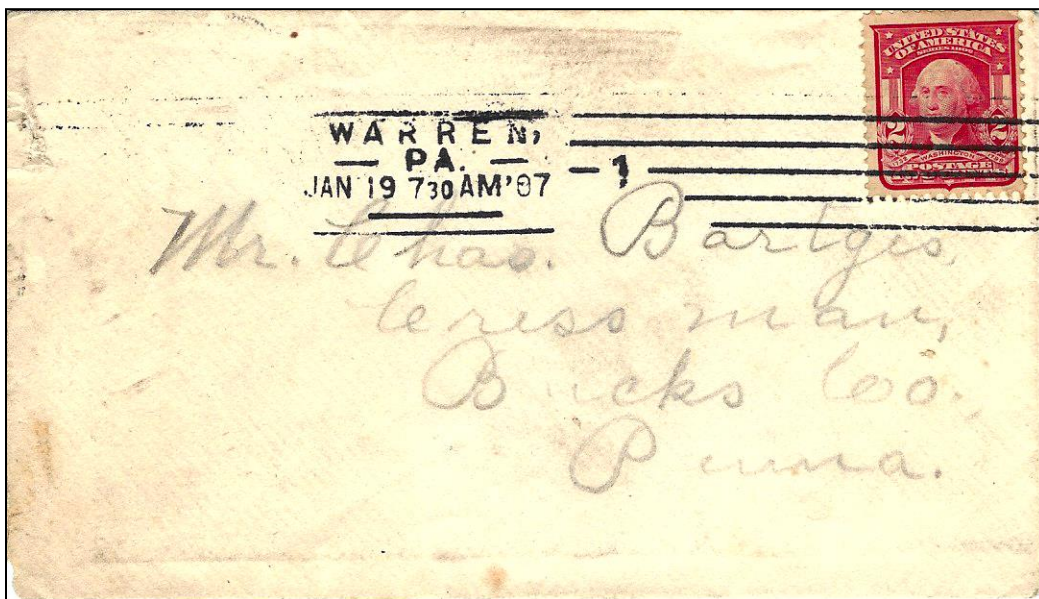


Figure 1
Warren, PA Small Stuff Cover 1907

Warren, Pennsylvania is the County Seat of Warren County (Figure 2). The town is located along the Allegheny River and is home to the Allegheny National Forest headquarters; the Cornplanter State Forest, named for Chief Cornplanter of the Seneca Nation, one of the tribes of the Iroquois Confederacy and headquarters for the Chief Cornplanter Council. Warren is the oldest chartered Boy Scouts of American Council in continuously operation and the Blair Catalog Company, which most of you received through the mail.

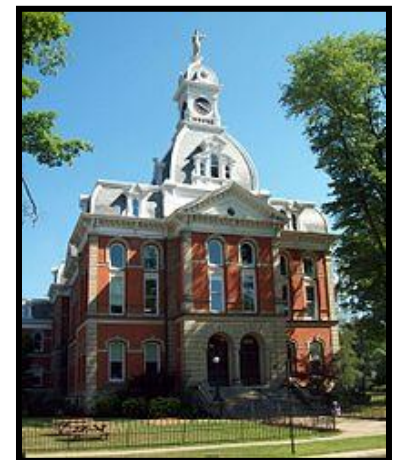


Figure 2
Warren County Courthouse

The town was initially occupied by the Seneca Indian Nation and the French attempted to lay claims to the territory by burring plaques in 1749, but the land was sieged and transferred to the British following the French and Indian War. In 1795 following the Revolutionary War the town was laid out by General William Irvine and Andrew Ellicott. The town name was in honor of Major General Joseph Warren. Joseph Warren (Figure 3), a Harvard College graduate in 1759 who became involved with the “Sons of Liberty” and associated with the likes of John Hancock and Samuel Adams and involved with the Battle of Lexington and Concord Warren was responsible for sending William Dawes and Paul Revere on their famous “midnight rides” to warn Hancock and Adams. The Holland Land Company erected a storehouse that was completed in 1796 and a Daniel McGuay of Ireland became the first permanent inhabitant of European decent.

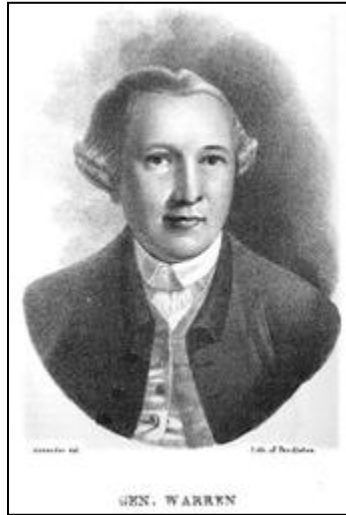


Figure 3
Joseph Warren



Figure 4
William Penn

Warren profited from the abundance of wood in the area and its easy access to float the logs down the Allegheny River to Pittsburg. Oil was discovered in 187t5 when a David Beaty drilled for gas in his wife’s flower garden. The economy brought about large Victorian homes from the oil and lumber business.

Bucks County is located in an area commonly known as the *Delaware Valley*, northeast of Philadelphia. The County Seat is Doylestown and was named after an English Buckinghamshire County. William Penn (Figure 4) established the County in 1682 along with two other counties. The Revolutionary War played a roll in Bucks County where General George Washington troops camped in preparation to cross the Delaware River and take Trenton, New Jersey on De. 26, 1776. William Penn was born October 14, 1644 and passed July 30, 1718 and was responsible for the founding of the Province of Pennsylvania, a British North American colony the eventually became the U. S. state of Pennsylvania. The United States Constitution was adopted based in large part on Penn’s democratic principles.

Quakertown, Pennsylvania is a borough in Bucks County. The area was originally settled by the Religious Society of Friends or Quakers and became Quakertown in 1803 and a post office was established. During the Revolutionary War on Sept. 18, 1777 a wagon convoy carrying the Liberty Bell from Philadelphia to Allentown stopped in Quakertown. The Bell was stored overnight behind the Evan Faulke home. Col. Thomas Polk of Charlotte, North Carolina housed the entourage at the Red Lion Inn. The Red Lion Inn was also the starting point for the John Fries’ Rebellion in 1799.

The population of Quakertown was sufficient that they were able to elect their first Burgess in 1854 and by 1880 the North Pennsylvania Railroad passed through resulting in an increase in population. One of the first railroads chartered in the United States in 1833 was the Pennsylvania and Reading Railroad resulting in the construction of the Quakertown Passenger and Freight Station (Figure 5) constructed of Rockhill granite and Indiana Limestone and is listed on the National Register of Historic Places.



Figure 5
Quakertown Passenger and Freight Station

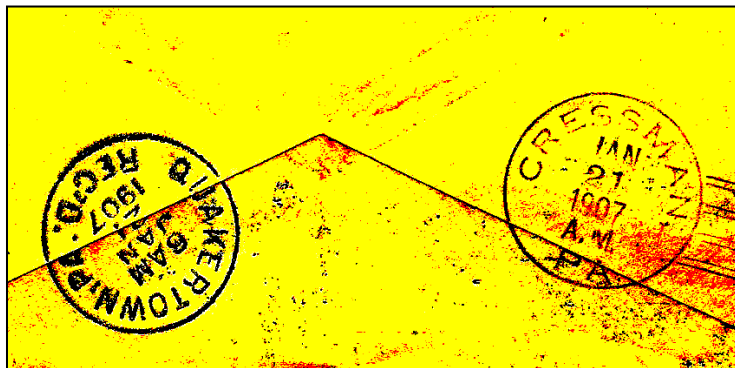


Figure 6
Small Stuff back ref.-Cressman, PA Cancel

Editor's Note: The cancellation that appeared on the back of the Warren, PA cover (Figure 6-enhanced for clarity) indication "Cressman, PA" has been scanned and enhanced in order to read is presented in that no data could be found of a town by the name of Cressman in Pennsylvania although it appeared in one of Richard W. Helbock "United States Post Offices" that covered the state of Pennsylvania and list as being in existence from 1889 through 1915.

References:

- Wikipedia Free Encyclopedia web: http://en.wikipedia.org/wiki/Warren_Pennsylvania
- Wikipedia Free Encyclopedia web: http://en.wikipedia.org/wiki/Scouting_in_Pennsylvania#Chief_Complanter_Council
- Wikipedia Free Encyclopedia web: http://en.wikipedia.org/Joseph_Warren
- Wikipedia Free Encyclopedia web: http://en.wikipedia.org/William_Penn
- Wikipedia Free Encyclopedia web: http://en.wikipedia.org/Quakertown_Pennsylvania
- Wikipedia Free Encyclopedia web: http://en.wikipedia.org/Quakertown_Passenger_and_Freight_Station
- U. S. Postal Service web: <http://webpmt.usps.gov/>

[Return to May Contents](#)

[Go to WSC Home Page](#)