

Wichita Stamp Club Newsletter

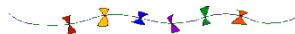


Vol. 83, No. 2, February 2015

Neal E. Danielson
Editor



“Go Fly A Stamp”



Click on a link below in order to go directly to the article

[Frogs on Stamps](#)

[Philately and Fiction](#)

[Montgomery County](#)

The second part of a philatelic visit to Montgomery County

[The Mystery of Sedang](#)

The strange little tale of a little known “country”

[Go to WSC Home Page](#)

THE CELEBRATED JUMP by Louis Forster

In 1865, Mark Twain (Figure 1) published his famous short story “*The Celebrated Jumping Frog of Calaveras County.*” The tale, in a round-about way, tells of a frog with great leaping abilities.



Figure 1

Mark Twain on Russia stamp #2403

In 1986, at the annual International Frog Jumping Contest in Calaveras County (California), Rosie the Ribeter made an amazing leap of over 20 feet and established a new world record. The world record for a human in the *running* long jump is only a few feet longer. The frog, of course, was not running. The record for the human *standing* long jump is many feet shorter than Rosie’s leap.

Frogs (and toads), as you know, are amphibians. Several years ago, the American Topical Association listed Amphibians as the 9th most popular topical collecting area. There are several thousand different stamps depicting amphibians. Most of these stamps picture frogs and toads. A tree frog on a limb can be seen on the Australia stamp (Figure 2) and a toad beneath the flower on the stamp of Great Britain (Figure 3). The United Nations stamp pictures a critically-endangered Panama frog (Figure 4).



Figure 2

Australia #790



Figure 3

Great Britain #1144



Figure 4

United Nation - Geneva #266

Frogs & Toads fit into the middle of the biological classification scheme of amphibians:

- first are worm-like, burrowing animals (with a tail, but without limbs) named Caecilians,
- then we have Frogs & Toads (animals with limbs, but without a tail) and
- finally the Salamanders (animals with both limbs and a tail).

The Germany DDR stamp shows us a fossilized frog. Frogs and toads are modestly old on the evolutionary scale. The first precursors of amphibian species probably appeared about 400 million years ago. Modern versions of caecilians and salamanders are apparently older than frogs/toads and developed around 300 million years ago. Modern ancestors of our frogs and toads are about 250 million years old.

A LITTLE BOOK NOTICE by Jeff Lough

Reinhard Kaiser. *Paper Kisses. A True Love Story*. N. Y.: Other Press, 2006. (Translated from the 1996 German work: *Konigskinder* by Anthea Bell.)

Those of us who have enjoyed philatelically related fictional literature have usually been reading a bit of science fiction or a war novel or in most cases a crime thriller. The current selection is not a fictional piece. It is an historical work based on 30 pieces of postal history with letters inside purchased at a stamp auction in Frankfort, Germany in May of 1991. The letters had been stolen from the sister of the lady of the story by a burglar who had sold them before he was caught. I call it a historical piece because it contains photographic facsimiles of letters and of an envelope/cover (Figure 1) interspersed with information that describes the international and personal settings and developing stories of the two correspondents. This is much like the professional historians' work describe in a book I am trying to master entitled *Editing Historical Documents*.

The author of this work found the actual real-life story so compelling that he decided to publish the facts of the matter rather than distort it by using it as the basis for a work of fiction.

The letters had been written by a German to his lover, a Swedish lady he had met in Italy. The story begins in what was eastern Germany in the city then known as Konigsberg, now known as Kaliningrad and part of the Russian Federation. The young man had just earned his doctorate in geology and paleontology. He moved to Coburg, Germany to be the headmaster at a successful Jewish boarding school. Then he moved on to Lithuania to run from the soldiers of the Third Reich and tried to go to Haiti and ultimate safety. His personal history and a love story unfolds in this interesting philatelically derived story.

It is interesting that the auctioned philatelic lot was hotly contested by another unknown bidder in 1991. Was the bidder the young man? What happened to the couple?

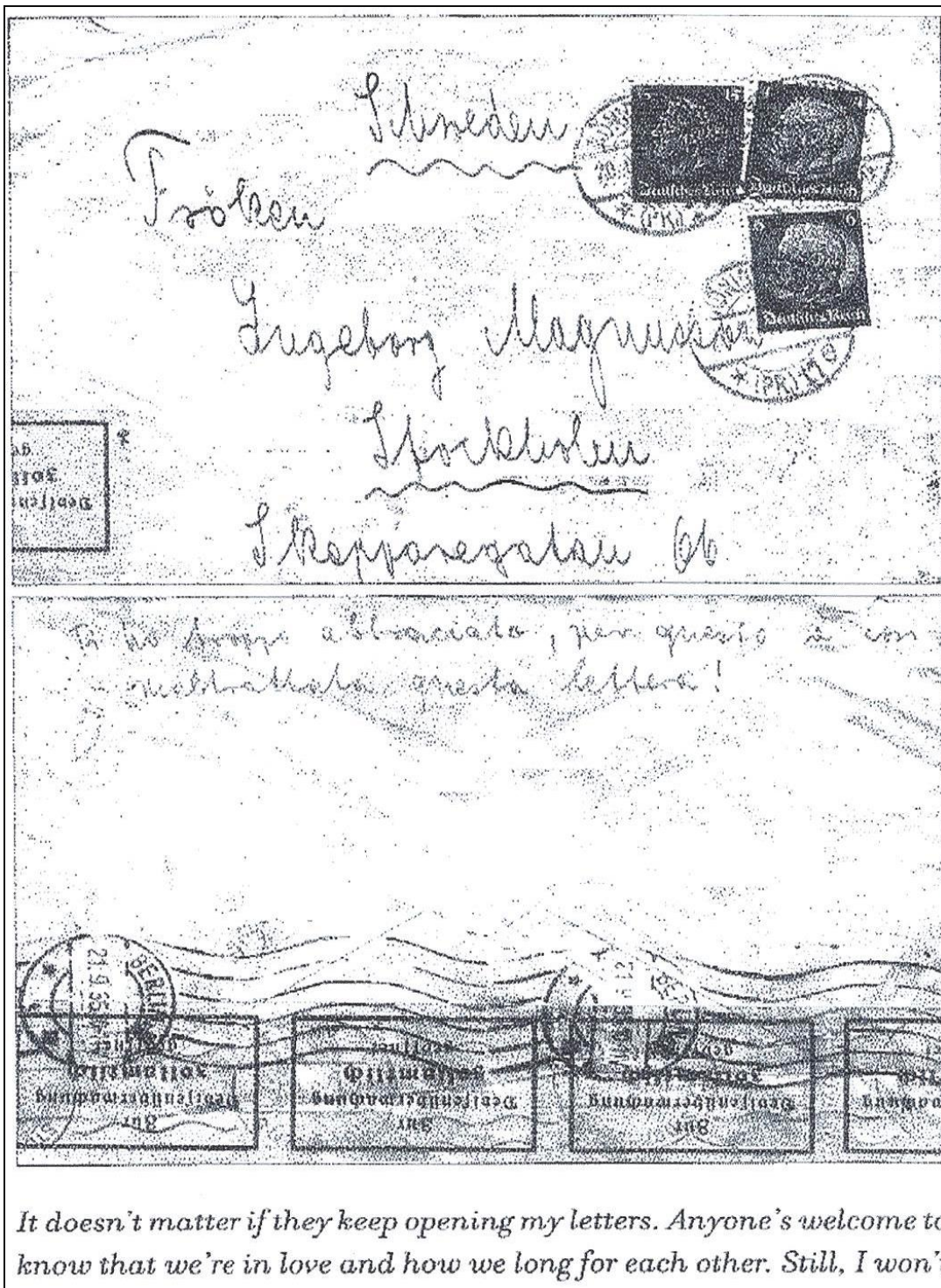


Figure 1

[Return to February Contents](#)

[Go to WSC Home Page](#)

MONTGOMERY COUNTY—PART 2 of 3 by Jeff Lough

The rich philatelic history of Montgomery County in southeast Kansas continues where Part 1 left off. After covering northeastern Montgomery County we travel to the county seat, Independence, and then down a couple nice country highways to visit other communities and some unique historical sites.

INDEPENDENCE

Independence is the county seat of Montgomery County. The annual Halloween celebration, Neewollah is famous throughout the state. Figure 1 illustrates an early cover dated December 31, 1874 with a circular date and location postmark and a crossroads postmaster-made killer on its Scott #136 National Bank Note Washington 3¢. Independence' early role as a marketing center is demonstrated by this cover with the John McCllagh druggist and bookseller corner card addressed to a lady in Lawrence, Kansas. An older cover (Figure 2) that had likely carried personal mail dated simply with a January 12th circular location and date postmark and cork crossroads killer with the same Scott #136 is addressed to a gentleman in Long Creek, Illinois.

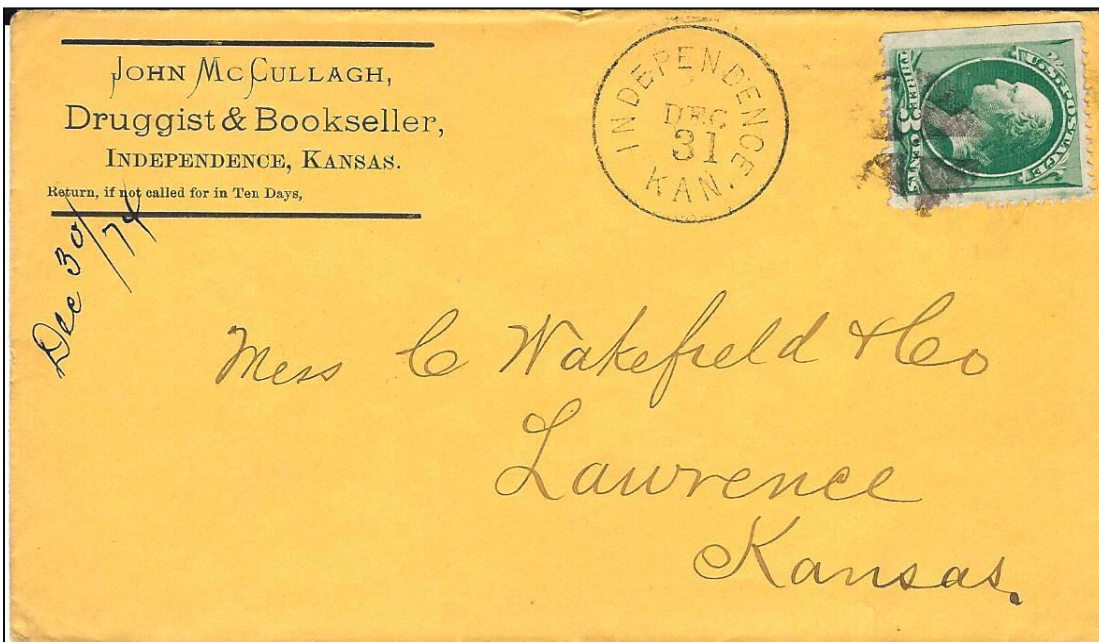


Figure 1
Independence, Kansas Corner Cover of 1874

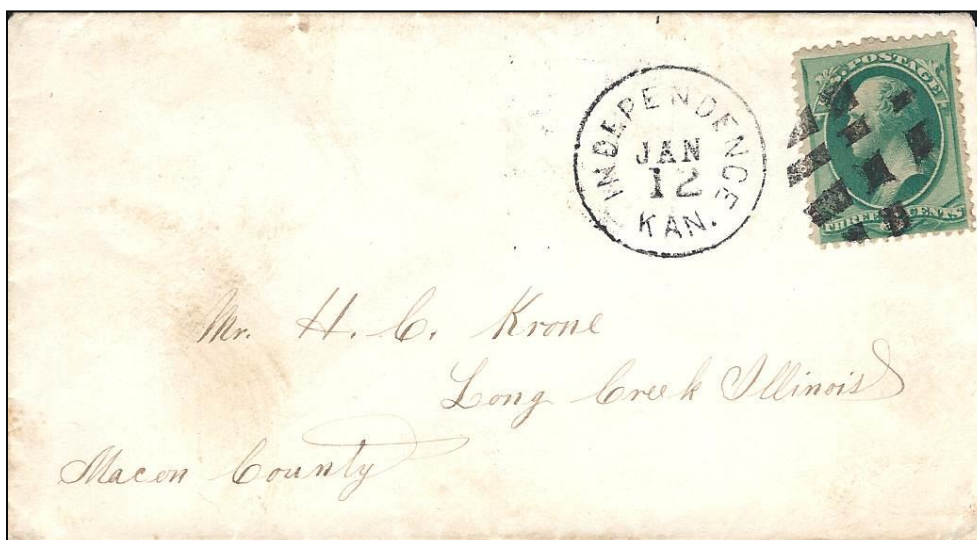


Figure 2
Independence, Kansas Cover

HARRISONVILLE

Several miles south of Independence the village of Harrisonville began as a stagecoach stop with a store, newspaper, post office, school, a Quaker/Society of Friends church and 2 or 3 homes. It is thought the town was named after William Henry Harrison, the ninth President. When the railroad was built through nearby Bolton, the post office moved to Bolton. Nowadays Harrisonville is simply a well preserved cemetery (Figure 3). Figure 4 illustrates a cover with Scott #210 American Bank Note Washington issued to cover the reduced to 2¢ postage for ½ ounce 1st class mail in 1883 tied with a traditional circular location and date postmark and a circular killer. In 1885 there was a newspaper, the *Harrisonville Critic*, published by editor Joe Ray. It was said that the newspaper was short-lived because in those days there were so called “Tramp” newspaper editors that roamed the country setting up a newspaper then moving on when it became apparent that a community showed minimal potential for growing.



Figure 3
Harrisonville Cemetery



Figure 4
Harrisonville, Kansas Cover of 1885

FAWN CREEK/FAWN/TYRO

The Fawn Creek post office was established in 1870. Fawn Creek, later known as Fawn and nowadays as Tyro, is south of Harrisonville a few miles on the road between Independence and Coffeyville. The first postmaster was Le Grand Sherman. The name Fawn Creek was derived from the creek that flowed nearby. Old maps suggest that the first post office was located a mile or so southeast of the present town.

An early cover postmarked in Fawn Creek is illustrated in Figure 5. A 3¢ Washington Scott #136 stamp has a postmark dated February 5, 1870 addressed to a young lady in Pasadena, California. The town's name was changed to Tyro in 1886 when the Denver, Memphis and Atlantic Railroad came through. Why this name was chosen is not known but the word is defined as "novice."

The name for the post office was not officially changed until 1893. One early postmistress was Mrs. Addie Dillenay who worked out of her husband's store. The early town had a hotel and the usual complement of churches, a school, a Grange Hall, and other typical enterprises. Nowadays there are a few antique stores along a highway nearby with no other retail outlets. Figure 6 shows the most recent post office that has become a private home in the ghost downtown of brick buildings. Figure 7 is a Tyro postmarked embossed envelope addressed to a party in nearby Coffeyville on April 18, 1898. The 'Bee' Post Office" was established on January 10, 1881 with Samuel P. Strahan as postmaster. Reportedly, it was in a residence located four miles north and two miles west of Tyro. It ceased operation on July 27, 1881 but opened again on January 4, 1882. It continued in service until November 2, 1887. The coming of the railroad in 1886 located a mile or so to the north heralded its end.



Figure 5
Fawn Creek, Kansas Cover of 1870



Figure 6
Fawn Creek Former Post Office now a Private Residence

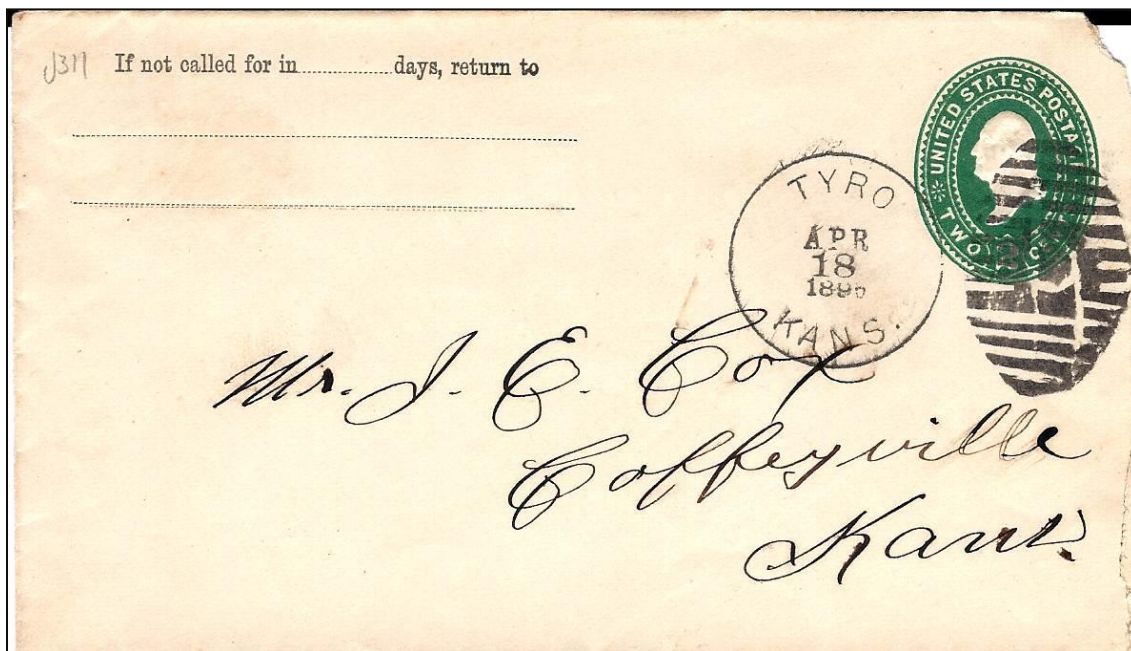


Figure 7
Tyro, Kansas Cover of 1898

WAYSIDE

Wayside is a small town northwest of Tyro and Harrisonville. When a petition was sent to the Post Office Department for a post office the following three names were submitted: Hallville, Corn and Wayside. The POD decided on Wayside and the Wayside post office was established on May 16, 1887 with Joseph Hall as the first postmaster. When Harry Foreman became postmaster, and opened a grocery store in his home, he moved the post office to his home. A post office building was later moved to Wayside from the Bolton community. This post office building was later moved to the Little House on the Prairie historical location.

The first railroad built from Independence to Havana further southwest passed through Wayside in 1886. The depot was a boxcar located at the south end of Main Street by the tracks. In 1907, a wedding took place in the boxcar when James Horsman (the depot agent) got married.

Figure 8 illustrates a cover with embossed postal stationary U71 and the Scott #257 General Sherman 8¢ definitive as a registered mailing to a St. Louis newspaper. Target killers accompanied by a November 16, 1895 circular location and date postmark, a stamped registration number and a St. Louis destination postmark complete the post office's handling of this piece.



Figure 8
Wayside, Kansas Cover of 1895

LITTLE HOUSE OF THE PRAIRIE

The Wayside post office was lifted up and relocated to a site a few miles southeast of Wayside to a location believed to be near the farm where Laura Ingalls Wilder lived as a child gathering the inspiration and background for what became the beloved novel *Little House on the Prairie*. The United States Postal Service commemorated this piece of literature with Scott #2786 which accompanies as Figure 9. The present location of this very small post office is on a museum site celebrating the Ingalls farmstead. Of course it is not an active post office, however the accompanying photo is quite interesting as illustrating of the interior of this well preserved post office building where the post office boxes, the stove on which the postal worker cooked food and found warmth and his sleeping cot are all found crowded into a very small space (Figure 10). The exterior of the old post office building is shown in Figure 11.



Figure 9
Scott #2786



Figure 10
Interior of Old Post Office



Figure 11
Old Post Office Exterior View

Figure 12 is an old Montgomery County Railroad Map around the year 1899 that provides a good view of the railroad lines in and out of Cherryvale as well as several other small towns discussed in the Montgomery County stories. This map will appear at the end of each part of the Stories along with References. Figures will appear in numerical sequence beginning with Figure 1 in each part. Part 3 will appear in future issue of this Newsletter.

References

- **Mr. Ralph Lott** supplied many of these covers for our pleasure and enlightenment.
- Baughman, Robert W. *Kansas Post Offices. May 29, 1828—August 3, 1961.* Topeka, KS: Kansas State Historical Society, 1961.
- Blackmar, Frank Wilson *Kansas: A Cyclopaedia of State History, Volume 2.* Standard Publishing Company, 1912.
- Cranor, Ruby. *Caney Valley Ghosts & Settlements.* Bartlesville, OK: Blackman Printing, 1985.
- Duncan, L. Wallace. *History of Montgomery County, Kansas. By Its Own People. Illustrated. Containing Sketches of Our Pioneers—Revealing their Trails and Hardships in Planting Civilization in this Country—Biographies of their Worthy Successors, and Containing Other Information of a Character Valuable as Reference to the Citizens of the County.* Iola, KS: Press of Iola Register, 1903.
- Duvall, Carol, et al. *History & Families. Montgomery County, Kansas. 1869-1994. 125th Anniversary.* Paducah, KY: Turner Publishing Company, 1994.
- Jost, Lora and Dave Loewenstein. *Kansas Murals. A Traveler's Guide.* Lawrence, KS: University Press of Kansas, 2006.

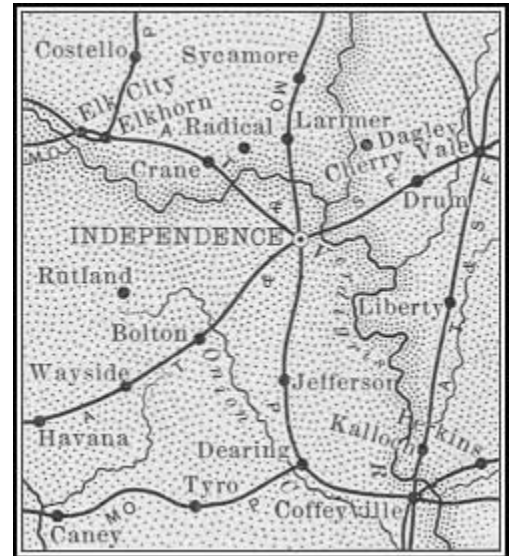


Figure 12
Montgomery County Railroad Map ca1899

[Return to February Contents](#)

[Go to WSC Home Page](#)

THE MYSTERY OF SEDANG by Jeff Lough



Figure 1
Deh Sedang Ber Math



Figure 2
Deh Sedang Moi Mouk

The French adventurer, Charles-Marie David de Marena, established his own country in the Kingdom of Annam of French Indo-China in 1888. The area is in the central highlands of what has been regarded as South Viet Nam. This came about when De Marena had previously helped the tribal peoples with an epidemic while establishing trading ties. After that the people had made him a chief and he had married the daughter of another chief. De Marena and his father-in-law held a tribal conclave and had De Marena elected Chief-of-Chiefs or king. He fancied himself *Marie the First, King of the Sedang*. De Marena bestowed medals and titles of nobility on others and tried to gain the support of first the British government and then Belgian commercial interests for his kingdom. These efforts failed. The French colonial government secured his assistance to secure the tribal peoples' support against Siamese/Thai incursions from the north and west. After this was done the French put an end to his pretensions and he died in exile in 1890 of a cobra bite.

Accompanying this article please find a copies of two of the stamps issued by the Kingdom of Sedang. These stamps appeared in 1889 with a design representing De Marena's royal arms, described in heraldry terms as a lion rampant or on azure, surrounded by a crown. The inscriptions of the 7 values in the set reads variously "Deh Sedang" or Kingdom of Sedang with the different stamps having values in "math," "mouk," or dollars. Many of these are found with a "postmark" giving the year 1889 in the center and the names "Deh Sedang" and "Pelei' Agna" within a single lined circle (examples shown in Figures 1 & 2). They were lithographed in color on white or yellowish paper.

Some modern playful fellows continue the pretense and claim to be legal successors of De Marena and have the right to bestow titles of nobility and organize a pseudo-government.

Sources

- Baldus, Wolfgang. *The Postage Stamps of the Kingdom of Sedang*. Munich: Wolfgang Baldus, 1970
- Mellville, John M *Phantom Philately. A Descriptive List of Stamps That are Not what They Seem*. Reprint. Worthington, OH: Janet van den Berg, 1950.

[Return to February Contents](#)

[Go to WSC Home Page](#)