

Wichita Stamp Club Newsletter



Vol. 83, No. 12, December, 2015

Jeff Lough
Editor



"Go Fly A Stamp"



Click on a link below in order to go directly to the article.

[Wabaunsee County](#)

[Don't Sweat the Small Stuff](#)

A little honey from Atlanta, Kansas

[Travel Kansas](#)

A postal history visit to Emmett, Kansas

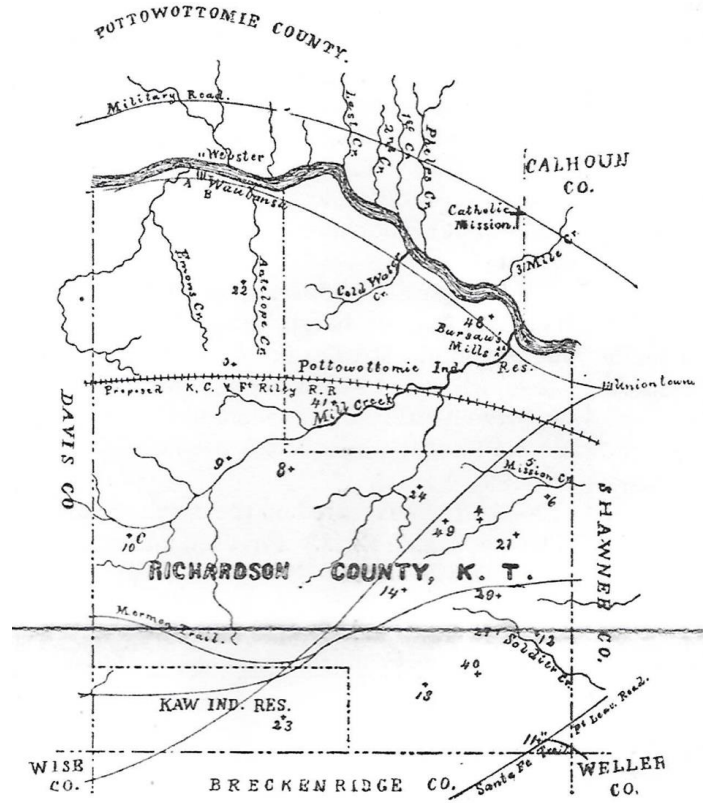
[Greater Republic of Central America](#)

[Friend](#)

A side note on Robert Emmett

[Go to WSC Home Page](#)

Wabaunsee County By Jeff Lough

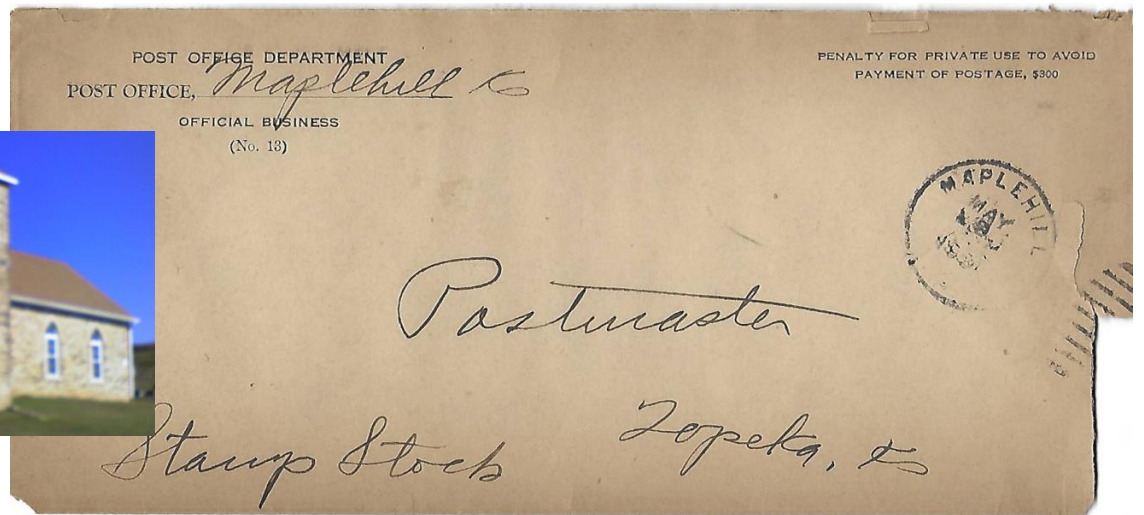


Richardson County was established in 1858 by the Lecompton, Kansas territorial legislature and was named after William P. Richardson, the Illinois congressman who introduced the first Kansas – Nebraska Act that created the Kansas and Nebraska territories. The county was re-named Wabaunsee County on March 25, 1859 from the Potawatomi term "Wah-bon-seh", meaning "dawn of day." It was the name of a Potawatomi tribal leader. The Richardson County map above has several interesting features. The only town noted is Wabaunsee, in the far northwest. The immediate area that later became the town of Maple Hill is indicated by a notation about a mill along the Kansas Rive in the upper right. In the south of the county an indication of the Mormon Trail is made. Little is generally noted of the Mormon Trail in Kansas history. It is interesting that Mill Creek is prominent in the center of the county. It has continued to have importance to the present day. Five of the counties surrounding the old Richardson County no longer exist or have been re-named: Wise, Weller, Calhoun, Breckenridge and Davis.

In 1854, the Beecher Bible and Rifle Church was built in the northwestern edge of the county by a group of free-staters, who had rifles shipped to the church to be used in the free-state effort in boxes marked Bibles. Captain William Mitchell, Jr., a seaman who joined the Beecher Bible and Rifle Colony that settled in the City of Wabaunsee, played an important role in the county settlement and with the underground railroad. This church still stands (See figure below.) The formal name of the church at that time was the Wabaunsee Church of Christ. An interesting cover postmarked out of the City of Wabaunsee appears below. It shows the "T" for "Territory" cut from the postal canceler on the 3 cent Washington U61 envelope. It was likely send from a free stater in the Wabaunsee city area to a free stater in New York. Wabaunsee's post office was established on December 29, 1855 and its first recorded post master was John Nesbitt.



Beecher Bible and Rifle Church
in Wabaunsee, Kansas



Maple Hill was founded about 1882 in the northeast corner of the county where a ferry had been used and a bridge built, offering a way to cross the Kansas or Kaw River from areas to the north and east to areas to the south.. It was named from a grove of maple trees growing on a nearby hill. In 1887, the [Chicago, Kansas and Nebraska Railway](#) built a main line from [Topeka](#) through Maple Hill to Herington. Maple Hill

had an early “Old Stone (Congregationalist) Church” that still stands to the southwest of the city and is illustrated by an accompanying photo. Maple Hill is a currently active little town with a real main street and serves as a bed room community for people who work in the local commercial enterprises and Topeka. Please note the accompanying cover carrying an official business penalty stamp postmarked on May 10, 1890. Maple Hill, like a variety of other Kansas and Wabaunsee County post office and town sites changed its location. It had moved in its early days from about a mile to the southwest to its present location in 1887. Maple Hill's first post master was George H. Smith.

Alma is Wabaunsee County's county seat. It is noted today for its cheese factory, limestone buildings and antique stores but is also an important cultural and economic center for the surrounding ranching communities. Alma is home to one of Kansas' finest county historical societies and museums. The postal envelope U91 with the accompanying special delivery stamp E6 was sent with postage due from one church pastor in Alma to another in Topeka in 1912.



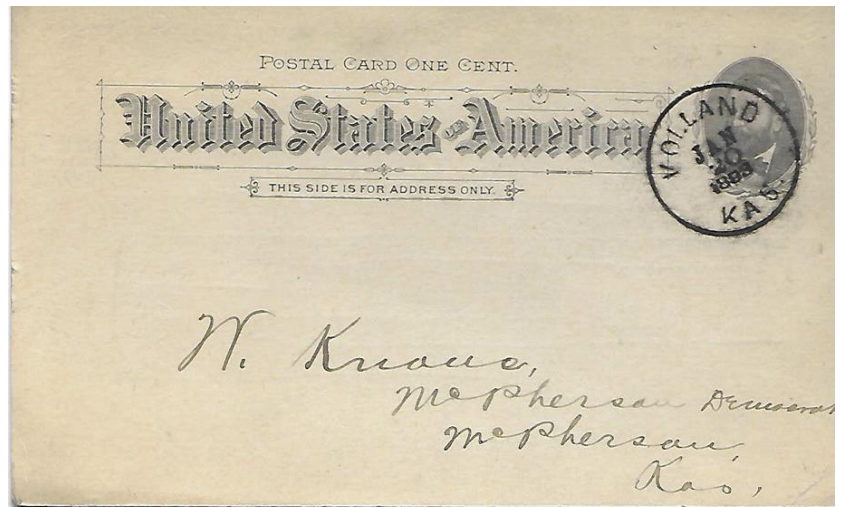
Alma Cover



Alma Post Office



Volland Mercantile and site of Post Office
(After contemporary renovation)



Post card mailed from Volland

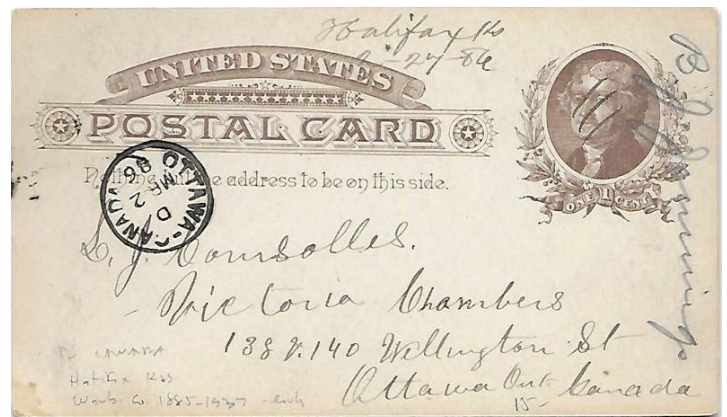
About 8 or 9 miles to the southwest of Alma, on old Kansas Highway 10, lies the location that was the small village of Volland. Volland's post office was first located about half mile west of where the town developed and began functioning on 1887.

The post office later moved to a large Mercantile building established by Otto Krause in 1913. It is pictured in an accompanying picture. Currently the Mercantile is a very well re-furnished location for art exhibits and other cultural adventures and community events. It shares the former town site with a very few residents. Volland was an early center of cattle shipment on the Rock Island Railway from the surrounding Flint Hills ranching areas. The accompanying post card of January 20, 1888 carries some interesting Republican Party organization information on the reverse from that era addressed from a Volland area person to a friend in Hutchinson, Kansas who interestingly enough has the last name of Kraus.

Fairfield was established around 1880 to the northeast of Alma a few miles. It is now a meadow without any indication of whatever form it took as a settlement. The founder of Fairfield had high hopes for his town and had a platt submitted to a map company that indicated a town with 10 city blocks. However the railroad that passed through the area discontinued service early in the game because another railway company had constructed a nearby track to take advantage of the profitable cattle shipments. The cover below is a two cent Columbian postal stationary envelope with a target cancellation accompanying a simple date (April 5, 1884) and location postmark.



Fairfield Cover

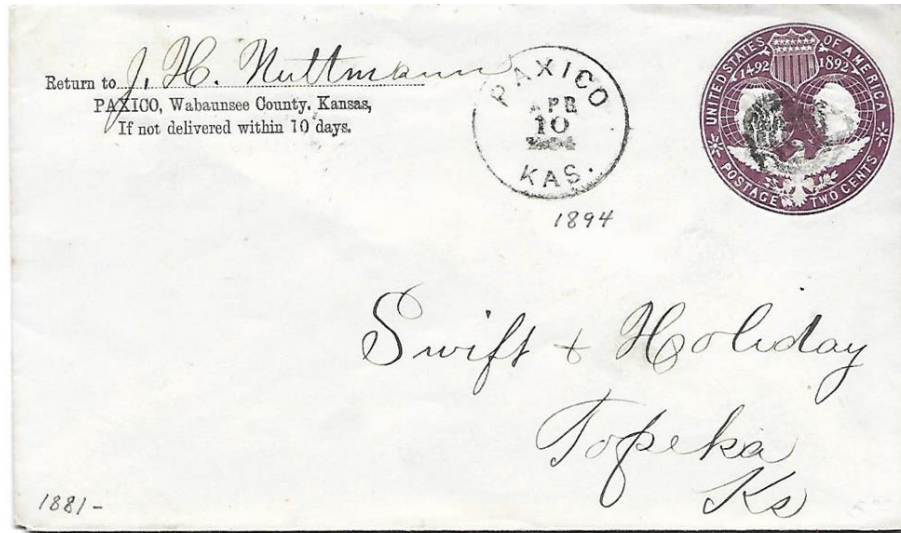


Halifax Cover

Halifax was originally settled by German immigrants who had named it Bismark. It became Halifax in September, 1869 being named after the county borough in Yorkshire, England. In its prime the town had a store, schools, railway depot and a blacksmith shop. At one time its stockyard was a major shipping point for cattle brought from Texas to graze on Flint Hill pastures. In 1937 the Santa Fe Railway renamed the town Hessdale, after a ranching family that continues to currently occupy some of the 19th century stone homes. The UX8 postcard above has a manuscript cancellation indicating it was a Fourth Class post office at the time it was dated Sept. 27, 1886.

Paxico is a community with another smaller community, Newberry, a few miles to the northwest. Newberry is significant for its nice large Roman Catholic Church. As European-Americans were establishing communities in the area, Newberry was a larger village with fewer people than in the nearby Paxico location. Nowadays Paxico is primarily a location for a number of antique stores, the major one of which is owned by a family descended from the original settlers of about 140 years ago. Paxico has a nice blues festival late in the summer. The accompanying Paxico two cent Columbian postal stationary envelope

was cancelled on April 10, 1894 with a target killer accompanying a simple circular postmark. The original post office was established on Sept. 5, 1881 and a post office continues to serve the town and its neighbors.



[Return to December Contents](#)

[Go to WSC Home Page](#)

DON'T SWEAT THE SMALL STUFF by Neal E. Danielson

This is the 68th in a series of articles relating to small post cards and small covers so if you have any in your collection that you would like to share please let me know.

This Small Stuff comes to you from Atlanta, Kansas by way of Atlanta, Kansas, thanks to **Dan Walter** (Figure 1). The Small Stuff cover measures $4 \frac{1}{16}$ inches wide by 3 inches and is franked with a 1 ½ ¢ Martha Washington stamp (Scott #805 from the Presidential Issue of 1938) and tied to the cover with a four-bar circular date stamp postmarked Atlanta, Kansas Aug. 8, 1947. It was mailed to individuals that also lived in Atlanta. The cover contained a note card thanking the individuals for the Shower Gift opening right to the left with a note about the shower gift indicating she could surely use it. The note card measured $3 \frac{3}{4}$ inches wide by $2 \frac{3}{4}$ inches when folded (Figure 2).



Figure 1
Small Stuff Atlanta, KS 1947



Figure 2
Small Stuff Insert turned sidwise

Atlanta, Kansas is located in Cowley County (Figure 3) along the Atchison, Topeka & Santa Fe Railroad near the north border of the County. The Post Office was initially established as Omnis on April 5, 1871 with Joseph E. Williams appointed Postmaster. He was replaced on February 6, 1873 by Jesse M. Junken who was Postmaster at the time the Post Office changed its name to Baltimore on April 8, 1873 and would remain Postmaster until April 3, 1876. The name of the Post Office changed to Atlanta on August 14, 1885 with Joseph F. Kidwell serving as Postmaster. The Post Office (Figure 4) was under the leadership of Postmaster John S. Rash on November 3, 1903 at the time the photo was taken. The photo shows Mrs. Rash, who was Assistant Postmistress, along with three Mail Carriers (one with horse and wagon and two on motorcycles).



Figure 3



Figure 4



Figure 5
Atlanta City Hall

Atlanta is a prime example of rural living with rural mail carriers and being a farming community with that small town atmosphere. The City Hall even reflects the atmosphere in and around the community (Figure 5). Ranching is an important feature with agriculture playing a vital role in the economy. Atlanta was founded as a cattle-shipping station along the Frisco Railroad. Businesses, churches and tourism are all part of the thriving community. They have a Caboose Museum housing collectibles, antiques and wood crafts. The Iron Horse Antiques and Crafts store is in downtown Atlanta. Both facilities are opened on a limited schedule and by appointment.

The Cornerstone Church, Prairie View United Methodist Church, and Timber Creek Friends Church provide for the spiritual needs of the community. Timber Creek Wildlife Adventures offer deer, turkey, quail and waterfowl hunting on 2,000 acres of family owned and operated farm and ranch land. Watersheds and man-made ponds offer fishing opportunity.

The community has major celebrations and get-togethers on an annual basis at the Labor Day Festival, the Atlanta Fireman's Auxillary Chicken Noodle Dinner in April; the National Night Out celebration in October; and their annual Atlanta Christmas event in December.

Cowley County has 18 stone arch bridges, several located near Atlanta, Kansas. Three of the 18 are shown: The Timber Creek Bridge (Figure 6) built in 1908 back in the dirt road era; the Fox Bridge (Figure 7) built in 1910; and Fromm Bridge (Figure 8) built in 1917. These three stone bridges are close to Atlanta; others are located near Winfield and other parts of Cowley County. All but one bridge was built prior to 1920 (one built in 1935). The majority of the Stone Arch Bridges are located on private land and require land owner permission to walk around. Most are on public roads that you can drive on but don't get out of your car and walk around. You can go to Cowley County website, Winfield website or Atlanta website and find a variety of photos and maps.



Figure 6—Timber Creek Bridge built in 1908



Figure 7—Fox Bridge built in 1910

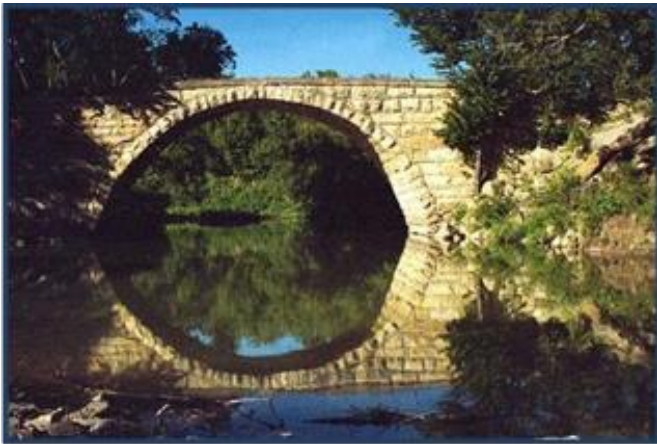


Figure 8—Fromm Bridge built in 1917

[Return to December Contents](#)

[Go to WSC Home Page](#)

TRAVEL KANSAS—NORTH TO SOUTH—EAST TO WEST by Neal E. Danielson



Figure 1

Emmett is located in Pottawatomie County, Kansas. The first post office in Emmett was established on November 25, 1905 and William E. Glynn was appointed Postmaster. There was another Emmett located in Brown County that opened on October 3, 1881 but closed on November 21, 1882, just over a year. Another town called Emmet was located in Wyandotte County that opened on February 25, 1890 but closed on October 15, 1901. Apparently adding an additional ‘t’ to the name was done in order not to conflict with an earlier town called ‘Emmet’. The town received its name from a rebel that opposed English rule in Ireland by the name of Robert Emmet (Figure 1).



Figure 2

Robert Emmet born March 4, 1778. He was an Irish Nationalist, orator and rebel leader. In 1803 he led an abortive rebellion against the rule of Britain. He was captured by the British and was tried, convicted of high treason and executed on September 20, 1803. He came from a wealthy Protestant family that was sympathetic with the Irish Catholics and their lack of representation in the British Parliament. The family also was sympathetic to the American Revolution. Although he failed in his rebel action his actions and speech after his conviction inspired his compatriots.

Prior to his execution he was to give his own epitaph. His girlfriend's father John Curran recorded his version of what Emmet said in his epitaph as a vindication of his character:

“I am here ready to die. I am not allowed to vindicate my character; no man shall dare to vindicate my character; and when I am prevented from vindicating myself, let no man dare to calumniate me. Let my character and my motives repose in obscurity and peace, till other times and other men can do them justice. Then shall my character be vindicated; then may my epitaph be written.”

On September 21, 1953 Ireland issued a set of stamps commemorating the 100th Anniversary of his execution (Figure 2 – Scott #149 and #150).

Pottawatomie County was created by the Kansas Territorial legislature in 1857 and based on a vote in 1882 Westmoreland was selected as the County Seat (Figure 3). The County was named in honor of the Potawatomi tribe of Native Americans. Famous Pottawatomie County citizens included Jess Willard, a world heavyweight boxing champion, and Walter Chrysler, the automobile manufacturer.



Figure 3

In 1910 while William E. Glynn was still Postmaster of Emmett a picture post card (Figure 4), carrying a happy birthday message, franked with a one cent Benjamin Franklin stamp (Scott # 331) and tied to the post card with a circular-date-stamp postmarked Emmett, Kans. Dec 10 1910. The post card was addressed to an individual in Gleichen, Alberta, Canada. Gleichen (Figure 5) is a hamlet in southeast Alberta within Wheatland County and was about the same size as Emmett. The residents have an opportunity to see the beautiful view of the northern lights of Aurora Borealis (Figure 6). The hamlet was named after Lord Edward Gleichen in 1884. The hamlet was incorporated as a village on Jan. 24, 1899 and incorporated as a town on May 6, 1910.



Figure 4



Figure 5



Figure 6

The community of Gleichen had its beginning before the Province of Alberta was founded and numerous famous and infamous people called Gleichen home. The hamlet was named after Count Gleichen. Emil Greisbach arrived in Gleichen community in 1883 from Germany was an early businessman and was the first mayor of Gleichen. Greisbach worked at the roundhouse of the Canadian Pacific Railway (CPR), owned houses, stores, a lumberyard and Opera House. Major-General Thomas Bland Strange who lived on a ranch just outside Gleichen received word that he was to raise forces and suppress the Riel Rebellion in 1885 and was responsible for the Canadian Artillery Corps.

A book published in 1947 on the early medicine in Alberta had the following to say about Gleichen: Dr. N. J. Lindsay was appointed by the Canadian government in 1886 to look after the health of the Blackfoot Indians on the Siksika Reservation and the Northwest Mounted Police out of Calgary and was stationed in Gleichen; Dr. Frances E. Windsor was the first female doctor in the west and lived and practiced in Gleichen; Dr. Henry Turner came to Gleichen in 1898 and established his practice; Dr. William Rose came to Gleichen following his graduation in 1900 and was mayor of the Gleichen in 1911; and Dr. George Howard Farquharson set up his practice in Gleichen following his graduation from Western University in 1908

On the outskirts of Gleichen is an abandoned Gas Station called Neal's Auto (Figure 7—No I do not recall having owned a gas station in Gleichen, although I worked in a couple gas stations in Dodge City during my younger days.) Gleichen was home to numerous religious organization that established churches in Gleichen, including Anglican, Presbyterian, Lutheran and Roman Catholic, another was the Union Church (Figure 8).



Figure 7



Figure 8

The first hardware store was built in Gleichen in 1886 along Crawfoot Street by a D. Knight. Another Hardware Store had its beginning in 1905 established by a William (Pat) Cosgrace who came west with the Canadian Pacific Railroad in 1882. Following his death in 1907, his wife along with her brother operated the store which was a two-story building but it burned down in 1916. Frank McKay built a new hardware store on the corner of Crawfoot Ave. and 4th Street, but he moved to Calgary in 1928 and let his son Walter operate the hardware store. The Flannagan brothers operated the hardware store for a short period of time but Walter McKay took the business back in 1931 and ran it until 1944 when it was turned over to Russel McQueen. Not sure when the sign was changed to “Gleichen Hardware” (Figure 9) as the Flannagan’s had placed a sign on the building that said, “Flannagan Brothers”. The Gleichen Hardware would be sold several times before 2002 when the last owner converted it to a liquor store.



Figure 9

Ranching was a lucrative business in and around Gleichen and one of the areas that was popular with the Ranchers was just outside of Gleichen called the Cattle Dip (Figure 10) as the Ranchers and Ranch hands observed (Figure 11). There were other businesses in Gleichen, such as the *Gleichen Newspaper*, later called the *Gleichen Call*; a bank; a dentist office in the Royal Bank Building; a bakery; from 1920 to 1946 it was home to the 22nd Battery a reserve artillery unit; the Palace Hotel with advertised rates in 1916 listed as: 50¢ for a meal, 75¢ to \$1.00 for a 1st floor room, 50¢ for a 2nd floor room and it had steam heat throughout (Figure 12). In 1923 a fire destroyed virtually all of downtown Gleichen, which included the Palace Hotel and the Griesbach Opera House. The new Hotel is called Queen's Hotel which had 30 rooms and charged a \$1.00 a night. It was home to the Blackfoot Hospital (actually located on the Sikslund not Gleichen); home to the Salvation Army Eventide Home for the Aged and Inform, a 115 bed facility..

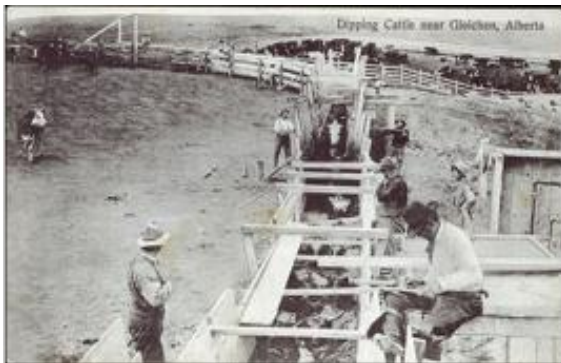


Figure 10



Figure 11



Figure 12

Gleichen was reported in the Alberta school records in 1906 on education of having a principal named A. M. Cronkhite who had a 1st class certificate and was paid \$900 per year for his services, along with three other teachers for 103 students that were enrolled. By 1932 219 students were registered; eight were preparing for exams in a class V diploma and two were writing exams for a class VI diploma. Three rural schools were constructed in Hammerhill, Dana and Craigantaler that were administered out of the Gleichen School. Gleichen was commended on having a substantial school building (Figure 13) which had a wood burning heater but would be receiving modern heating and ventilating system. (Oh how this brings back

memories of my days in grade school in a one room schoolhouse in rural Oklahoma.) As time takes a toll on the population of Gleichen eventually the Canadian government and the Alberta Province returned the town that was established 1910 back to being referred to as a Hamlet.



Figure 13

[Return to December Contents](#)

[Go to WSC Home Page](#)

The Greater Republic of Central America by Jeff Lough

The stamps shown below, were issued by the Greater Republic of Central America in 1897. This short lived nation was composed of present day Honduras, Nicaragua and El Salvador. It lasted from 1896 to 1898 and the capital was the Honduran coastal city of Amapula. A military coup in 1898 in El Salvador ended the experiment.

This country's existence had been inspired by an earlier "Federal Republic of Central America" that had been founded by an inspired and strong leader, Francisco Morazán, and had lasted from 1824 until 1838. He had been recognized as a visionary and great thinker since he attempted to transform Central America into one large and progressive nation. Morazán enacted liberal reforms in the new Federal Republic of Central America, including freedom of the press, speech and religion. He also limited church power by making marriage secular and abolishing government-aided tithing. These kinds of political activities would predictably create Roman Catholic and politically conservative forces to be in strong opposition. He was overthrown in the subsequent coup d'etat and assassinated.

Please note that the country's coat of arms on the stamps include a reference to the Masonic pyramid and eye and has the French Revolutionary symbol, the Phrygian cap, also used on Nicaraguan and Argentinian stamps and which has been in the national coats of arms of Bolivia, Colombia, Cuba, El Salvador, Paraguay and Haiti as well. The Phrygian cap is a soft conical cap with the top pulled forward, associated in antiquity with the inhabitants of Illyria, a region in the northwest of the Balkan peninsula. In early modern Europe it came to signify freedom and the pursuit of liberty, through a confusion with the *pileus*, the felt cap of emancipated Roman slaves. Accordingly, the Phrygian cap is sometimes called a *liberty cap*; in artistic representations it signifies freedom and the pursuit of liberty.

Perhaps it should be noted that the Masonic movement had been an important part of the "Liberal" movement and Liberal parties in the Americas and Europe in the 17th through the early half of the 20th centuries. These movements could generally be characterized as being Protestant and composed of small business men and professionals. "Conservatives" and Conservative Parties were generally closely associated with large land owners, the Roman Catholic Church and, sometimes, royal houses. The Masonic movement in the colonial United States of (North) America included large landowners and both conservatives and liberals.



[Return to December Contents](#)



[Go to WSC Home Page](#)

A Friend Indeed by Jeff Lough

The Irish patriot Robert Emmet, about whom **Neal Danielson** refers in an earlier article in this issue, had a very close friend, the great Irish bard Thomas Moore. Moore wrote many noteworthy tunes and is regarded as the foremost Irish lyricist. He had been a friend of Emmet from their Trinity College days. After Emmet's murder by British authorities, Moore wrote homages to his friend; one of which includes the following:

*Oh breathe not his name! let it sleep in the shade,
Where cold and unhonoured his relics are laid!*

In 1952 Ireland issued the nearby stamp, Scott Number 145 to honor Thomas Moore.



[Return to December Contents](#)

[Go to WSC Home Page](#)