

Wichita Stamp Club Newsletter



Vol. 82, No. 11, November, 2014

Neal E. Danielson
Editor



"Go Fly A Stamp"



Click on a link below in order to go directly to the article

[Travel Kansas](#)

A visit to Lowe, Kansas and Chautauqua County

[Don't Sweat the Small Stuff](#)

Here's a sweet little thing from Stony Brook, New York

[Smoking Snakes ?!!](#)

An interesting article on the Smoking Snakes of Brazil

[Go to WSC Home Page](#)

TRAVEL KANSAS—NORTH TO SOUTH—EAST TO WEST by Neal E. Danielson

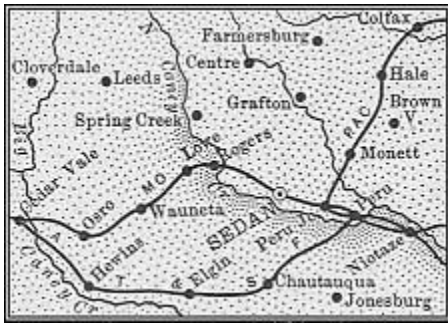


Figure 1
Chautauqua Co. Railroad Map 1899

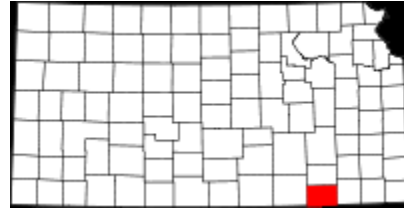


Figure 2
Chautauqua County

Travel Kansas—Lowe, Kansas located in Chautauqua County (Figures 1 & 2) in the south eastern part of Kansas. There was also a Lowe Kansas located in Finney County as an unincorporated community three miles south of Holcomb, but no Post Office established in the community. The Post Office in Lowe was first established as part of Howard County on August 1, 1871 and closed on December 7, 1871. The Post Office opened again when Chautauqua County was created by an act of the Kansas Legislature on June 1, 1875 when Howard County was divided, creating Elk County on the northern half and Chautauqua the southern half. Lowe Post Office was opened January 5, 1872 in what would be Chautauqua County and closed on September 16, 1875. Three month later on December 13, 1875 the Post Office opened again and would remain open until June 30, 1939.

A cover postmarked from Lowe, Kans. on Nov. 21, 1916 (Figure 3) and franked with a 2¢ George Washington stamp (Scott #406) and tied to the cover with a bulls eye killer cancel and postmarked with a circular-date-stamp on Nov.16, 1916. The letter was to an individual in Manhattan, Kans. The letter was from a Chris A. Price that lived in Sedan, Kansas. Sedan is the County Seat of Chautauqua County.

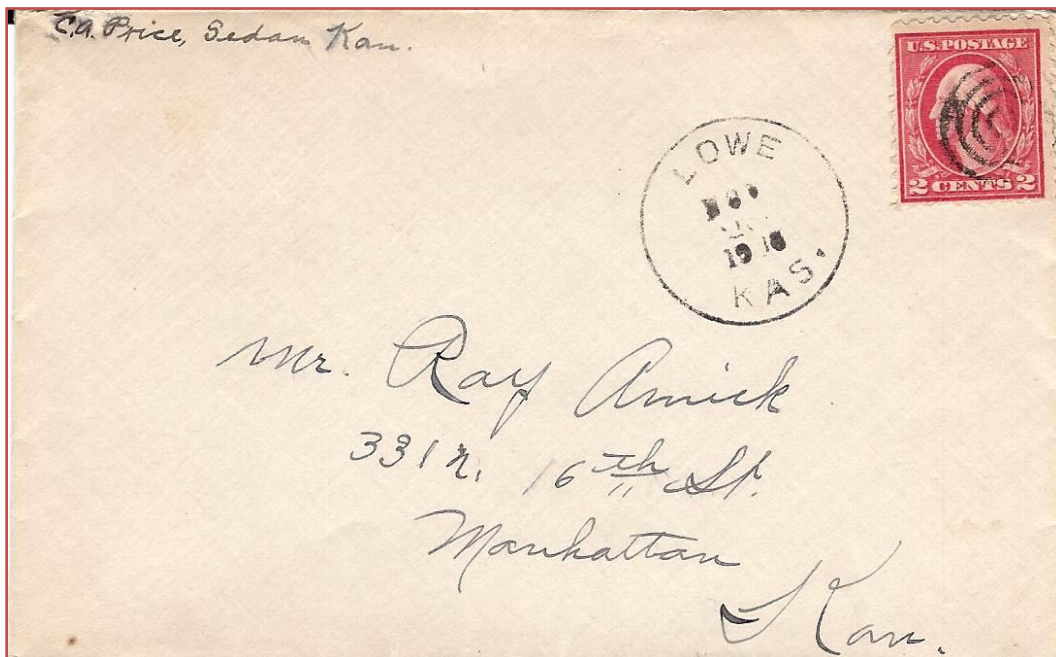


Figure 3
Cover Lowe, Kans. 1916

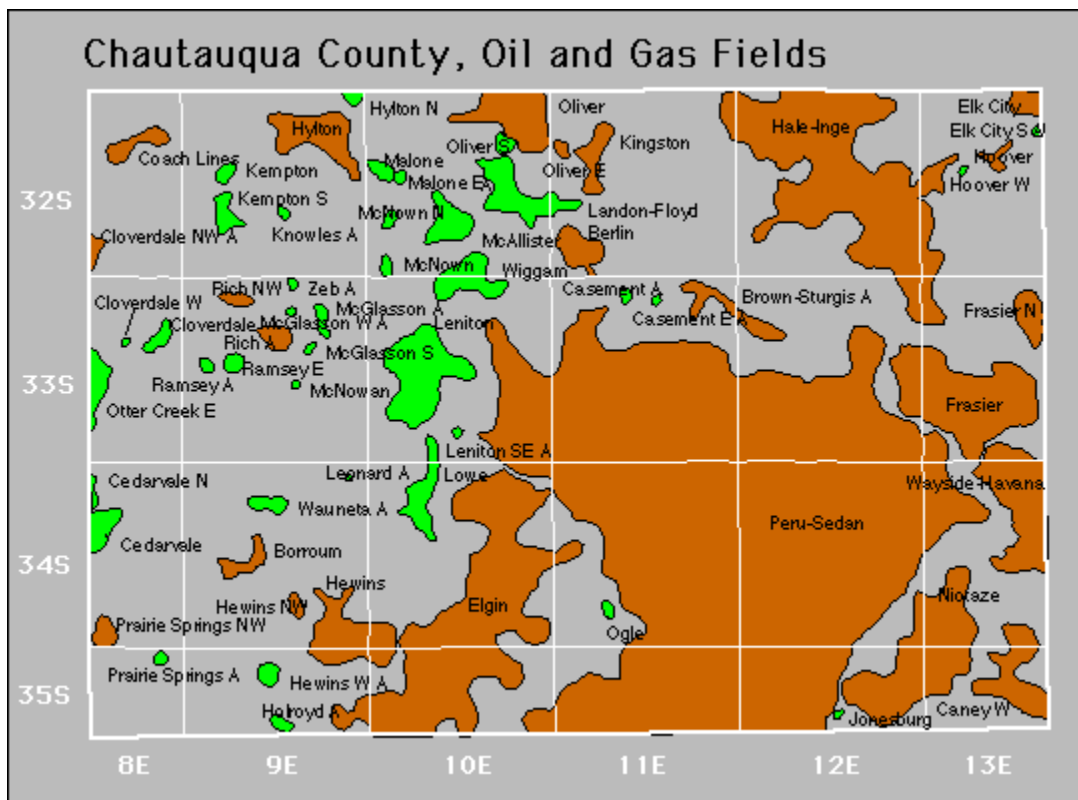


Figure 4
Chautauqua County Oil & Gas Fields

Mr. Price was employed in the oil field business and was telling his friend the large amount of oil in and around his home in Sedan area of about 50 and more being drilled daily. To give you an idea of oil and gas fields in Chautauqua County see Figure 4. Farming, ranching and petroleum are all vital economic boosters for the County and for Sedan. The County is named after Chautauqua County, New York and was created in 1875 with Sedan winning a hard fought battle when Howard County was being divided. The current Court House was built in 1918 (Figure 5) and some remodeling taking place in 1989. According to legend Sedan was name after Sedan, France due to the landscape in and around the area of wooded rolling hills. The Ackerman Hardware in Sedan opened in 1879 and is an American Classic to this day. Many homes and businesses are constructed of brick, sandstone, or limestone. One of the highlights of Sedan is the Emmitt Kelly Museum in the town, located in the 1896 Opera House on Main Street. This Museum pays tribute to the famous clown Emmitt Kelly (1898-1979) and his sad-faced character “Willie” (Figure 6).



Figure 5
County Courthouse, Sedan, Kansas

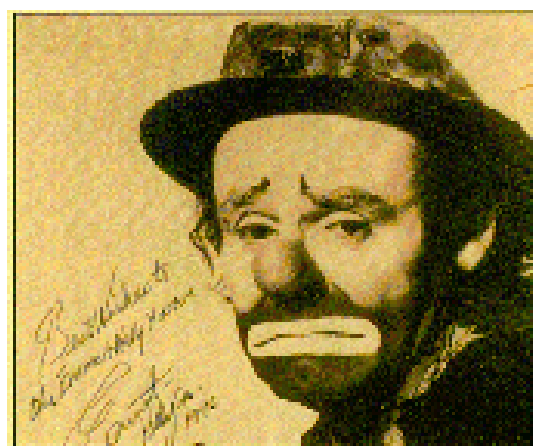


Figure 6
Emmitt Kelly as Willie

Kelly's career began as a trapeze artist and working his act with John Robinson Circus. His clown act was part time during his trapeze performance with his wife Eva Moore whom he met in 1923. He went full time as a clown in 1931. His performance as a white face clown to a hobo clown that her performed while working at an Art film "Weary Willie" became a tragic figure and would be seen sweeping up on one of the circus rings after others performances. He would often chase a light around the ring with his broom and fails to catch it. One of his acts was attempting to crack a peanut with a sledge hammer.

Kelly performed with the Ringling Brothers and Barnum Baily Circus from 1942 – 1956 and became a major attraction. He was a mascot for the Brooklyn Dodgers during their 1956 season. In 1952 he had a role as Willie in Cecil B. DeMille's "*The Greatest Show on Earth.*" He was part of the Bertram Mills Circus for a period of time.

Although Kelly's birth place is Sedan, the town of Houston, Missouri honors him as his boyhood home and has a Park named in his honor as well as hosting a Emmett Kelly Clown Festival and draws crowds from across the country including his grandson Joey Kelly who returns each year and provides a special performance.

Honors have been bestowed upon Emmett Kelly being inducted into the International Clown Hall of Fame in 1984; the International Circus Hall of Fame in 1994; and the Hall of Famous Missourian in 1998. The Missouri State Capital has a bronze bust on display in the rotunda of Kelly.

[Return to November Contents](#)

[Go to WSC Home Page](#)

DON'T SWEAT THE SMALL STUFF by Neal E. Danielson

This was the 60th in a series of articles relating to small post cards and small covers so if you have any in your collection that you would like to share please let us know.

This small stuff comes to you by way of New York, New York by way of Stony Brook, New York through **Jeff Lough** (Figure 1). This Small Stuff measures 4 ³/₄ inches by 2 inches and February 11, 1867 and is franked with a 3¢ George Washington stamp (Scott # 65) and tied to the cover with a Bold SON Hollow Star in regular type fancy cancel.



Figure 1
Small Stuff New York
Stony Brook 1867

New Your City dates back to 1524 when the French sailed into Upper New York Bay and encountered the Lenape Native Americans. European settlement began in 1609 when Henry Hudson sailed into the Narrows of Upper New York Bay in search of a passage westward to Asia, which he never found. He did find an abundant population of Beaver which the Europeans wanted as their pelts were part of their fashion. This resulted in an influx of Dutch that established trading colonies in the New World, one of which was New Amsterdam, thus becoming New York when the English took over the trading colonies in 1664. The forts and stockades in and around the area were built by African slave labor.

The battles that ensued during the Revolutionary War placed New York as a prime target by the British due to its major seaport. When the Articles of Confederation became a reality, New York served as the nation's capital from 1785 to 1789; and from 1789 to 1790 as capital under the United States Constitution. The city hosted the inauguration of George Washington as our first President. New York City served as the major port for numerous immigrants resulting in various cultures and economic influence, making New York on of the most important urban areas in the United States and the world.

Long Island stretches from New York Harbor into the Atlantic Ocean as an Island in the State of New York. It is considered part of the New York Metropolitan Area and consists of four counties: Kings and Queens that are boroughs of Brooklyn along with two counties as part of Long Island Sound—Nassau and Suffolk. Long Island is the largest and longest island in the contagious United States.

As stated earlier Henry Hudson explored the area in 1609. This was followed in 1615 by Adrion Block and is credited as the first European to identify both Manhattan and Long Island as islands. Indian deeds to the land identified Long Island as *Sewanhaka*.

Early in the Revolutionary War the British captured the Island from General George Washington in the Battle of Long Island (Figure 2) and would stay in the hands of the British until the end of the war in 1783.

One of the hamlets in Suffolk County is Cutchogue and is home to the oldest English style houses in the village of Southold (Figure 3) built in 1649. Another hamlet in Suffolk County is Stony Brook the area where our Small Stuff was mailed.



Figure 2
Battle of Long Island



Figure 3
Cutchogue English Style home 1649

Stony Brook is part of the town of Brookhaven in Suffolk County, New York, located on the North Shore of Long Island. The early history of Stony Brook grew out of the agricultural enclave growing first as a resort town then in later years as a tourist attraction, as well as an educational center. Stony Brook was considered remote during the 18th century except for businesses that were established alongside the mill built in 1699 and ended up being replaced in 1751 and would grind grain well into the mid 1900's.

When Stony Brook residents had to attend institutions in the neighboring communities of St. James and Setauket and as the hamlet grew in population the area expanded towards the north away from the mill area and towards the Harbor. However, development became stalled when it

was determined the Harbors access was not as great as its neighbors in nearby Setauket and Port Jefferson. One of Stony Brook's residents a local painter in 1840s, William Sidney Mount led a campaign for the harbor's dredging. The dredging occurred on two different occasions and both times the Harbor filled up so the effort was abandoned. This left Stony Brook the only opportunity to remain as an agriculture and cordwood industry as their economic avenue.

Tourist attractions in and around Stony Brook includes the Stony Brook Grist Mill; Long Island Museum of American Art, History, and Carriages; St. James Episcopal Chapel; West Meadow Beach Historic District; and the 19th-century William Sidney Mount House (Figure 4).

The Long Island Railroad arrived in Stony Brook in the 1870s which give the residents an avenue to New York City and the surrounding community. This led to Stony Brook becoming a popular summer resort town for city dwellers that wanted to escape the stress and hazards of urban life.

Today following some major renovation in Stony Brook, the hamlet is home to the Stony Brook University, modern shops in the Stony Brook Village Center, that includes the Stony Brook Post Office, decorated by a large eagle above the entrance that flaps its wings when the clock strikes each hour (Figure 5).



Figure 4
William Sidney Mount House



Figure 5
Stony Brook Post Office

References:

- Wikipedia Free Encyclopedia – http://en.wikipedia.org/wiki/Stony_Brook,_New_York
- Wikipedia Free Encyclopedia – http://en.wikipedia.org/wiki/Stony_Brook_Village_Center
- Wikipedia Free Encyclopedia – http://en.wikipedia.org/wiki/Long_Island_New-York
- Wikipedia Free Encyclopedia – http://en.wikipedia.org/wiki/New_York_City

[Return to November Contents](#)

[Go to WSC Home Page](#)

SMOKING SNAKES by Jeff Lough

In the 1940s snakes in Brazil had taken up the pipe smoking habit. Figures 1, 2, 3, 4 and 5 gives some examples. The 'Smoking Snake' was used as the unit insignia by the Brazilian Expeditionary Forces during World War II



Figure 2
Scott #635

Figure 3
Scott #636



Figure 1
Scott #637



Figure 4
Scott #638



Figure 5
Scott #639

Brazilian people have been considered as being very adept at training animals, birds, and all pets to do all kinds of tricks and stunts, but none had ever been able to train a snake to smoke.

Getúlio Vargas, the Brazilian dictator, was unwilling to become more involved in the Allied war effort, but permitted the U. S. to use some Brazilian airfields to stage maritime patrols in exchange for the promise of future U. S. industrial assistance. The Germans took issue with this policy and began actively attacking Brazilian ships. Brazil was brought into the war by the consequent sinking by submarines of a large part of its commercial fleet.

When Brazil declared war on Germany, they had no transports to send troops to the fighting area and people were beginning to believe that, although Brazil was at war, they would never have a chance for their troops to participate in the actual fighting. There was a saying in Rio during the first part of World War II that Brazilian troops would go overseas when snakes started smoking, in other words, never. While being transported from Brazil aboard American troop transports to fight in Sicily and Italy in 1944 the 25,000 Brazilian troops were often found singing a popular song 'Cobra Esta Fumando,' one translation being 'the snake is now smoking.'

Of all the South American countries, only Brazil provided troops that saw overseas combat during WWII. The other countries remained officially neutral, or joined the Allied side only late in the war.

The stamps in Figures 1 – 5 (Scott #635 – 639) honor the troops of the Brazilian Expeditionary Force (FEB) that fought in the invasion of Italy as part of the U. S. 5th Army under General Mark Clark. The Smoking Snake is the second lowest denomination in a set of five issued on 18 July 1945. The other values in the set were 20 centavos and 1, 2, and 5 cruzeiros. The four remaining stamps show the American 5th Army shoulder patch and the three high values also show the Smoking Snake patch. This set was printed by lithography on paper watermarked CASA+DA+MOEDA+DO+BRASIL and perforated 11. Some imperforate and un-gummed examples also exist



Figure 6
Scott #632
Cooperation



Figure 7
Scott #1172
Military Emblems & Map

Earlier, on 8 May 1945, Brazil had issued another stamp (Figure 6) that also shows the smoking snake, although you almost need a magnifying glass to see it. It appears on the highest value of a set of five stamps (Scott #632) issued to celebrate the Allied victory in WWII. It was printed by photogravure, also on watermarked paper and rouletted 7. This stamp recognized international cooperation and showed the South Atlantic air ferry route traveled by military flights between the U. S. and Europe. This round about path was necessary to enable short-range aircraft to fly across the Atlantic under their own power using a series of intermediate airfields so they would not have to be transported by sea.

Brazil issued another stamp (Figure 7, Scott #1172) on September 8, 1970 showing the Smoking Snake division patch to commemorate the 25th anniversary of the Allied Forces victory in WWII. It was lithographed with 11 x 11 ½ perforations. Whereas the previous set showed significant U. S. influence, even going so far as to depict an American flag, this stamp reflected more independence by showing only Brazilian military symbols. It was printed by lithography on un-watermarked paper and perforated 11 x 11 ½.

Figure 8 shows an interesting Brazilian airmail cover addressed from a Brazilian colonel in Sao Paulo to the Chief Commandant of the American Occupation Forces in Berlin dated June 28, 1947. The cover bears 3 copies of Brazilian Scott #518 printed by photogravure perforated 11 with a “CORREO*BRASIL” multiple watermark.



Figure 8
Brazilian airmail cover-Sao Paulo Brazil to Berlin, Germany

SOURCE
Cosgrove, Jack R. "Stamp Stories." *Biophilately*. (June, 2013) 62:83 – 85.

[Return to November Contents](#)

[Go to WSC Home Page](#)