

# Wichita Stamp Club Newsletter



Vol. 82, No. 6, June, 2014

Neal E. Danielson  
Editor



*"Go Fly A Stamp"*



Click on a link below in order to go directly to the article

[Travel Kansas](#)

Mertilla, Kansas

[Denmark, Kansas](#)

[Asterix and Tintin](#)

Comics on stamps

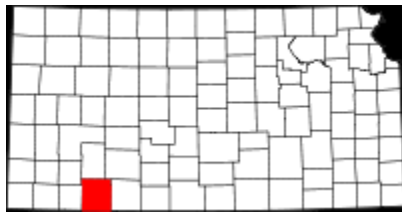
[An Interesting Paquebot Cover](#)

[Don't Sweat the Small Stuff](#)

A cutie from Fonda, New York

[Go to WSC Home Page](#)

**TRAVEL KANSAS—NORTH TO SOUTH—EAST TO WEST** by Neal E. Danielson



**Figure 1**  
Meade County



**Figure 2**  
Meade Co. Railroad Map ca1899

**Travel Kansas—Mertilla** located in the western corner of Meade County (Figures 1 & 2) along the Oklahoma border and a few counties east of the Colorado border. Mertilla is located in Mertilla Township and a rural money order post office established 4 August 1885 and would eventually close on 14 October 1916. A Post Card addressed to an individual in Plains, Kansas, also located in Meade County (Figure 3). The Post Card is franked with a one cent Benjamin Franklin stamp (Scott #331) and tied to the card with a four-bar circular-date-stamp postmarked Feb 21, 1910 from Mertilla, Kans. Mertilla had a livery barn, blacksmith shop, drug store, grocery store, hotel, etc. The drug store was originally owned by a Dr. Ostrander who lived in Carthage, Meade County, but when Meade was elected County Seat the town of Carthage evacuated and the doctor moved his drug store, building and all to Mertilla.



**Figure 3**  
Post Card from Mertilla, Kans. 1910

Meade County on the other hand has a varied historical background. It was originally created in 1873 with designated boundaries and was named in honor of General George G. Meade. However the County was dissolved in 1883, but following new established boundaries it was reorganized in 1885. Governor John A. Martin was petitioned and he appointed a Mr. Graves the census taker. The results showed 1,165 householders out of a population of 3,507 and on 4 November 1885 Meade County was established and the Governor declared Meade Center the temporary County Seat. Temporary County Officers were named until an election could be held choosing permanent officers and County Seat which was held 5 January 1886.

Three towns were in the running for County Seat, that being Fowler, Pearlette and Meade Center. The results were Meade Center as the permanent County Seat.

The first settlers to arrive in Meade County and establish a settlement was in 1878. A colony from Zanesville, Ohio arrived in Pearlette in 1879. That same year a salt sink was discovered about three miles south of Meade Center that appeared all of a sudden in an area that was considered a favorite camping ground. This salt sink would end up being about 200 feet wide and about 100 feet deep and was about half full of water. For a short period of time an enterprise evaporated the water for salt but the business didn't pay so it was abandoned. This was followed with the discovery of artesian water in 1887 with a large number of wells being dug on land in Crooked Creek Township. The artesian wells would expand to about 1,000 in the northeastern part of the County. Water was found about 150 feet deep. Peat was discovered in 1878. Pumice limestone, gypsum and sandstone is found in various locations throughout the County.

On 26 February 1889 an Act of the Kansas Legislature changed Meade Center to just Meade. The Meade Center Post Office opened on 30 July 1885 and changed to Meade on 30 March 1889 and is still open today.

Agriculture plays a major role in the County economy with leading crops of wheat, Kafir corn, alfalfa and other tame grasses, barley, corn, oats, buckwheat, millet, milo, maize, sorghum, Irish potatoes and wild grasses among the important crops. The Chicago, Rock Island and Pacific Railroad that enters the northeast corner of the County and crosses southwest through Meade is a major enterprise for the agriculture businesses in the County. Cattle ranching, livestock is a profitable business enterprise for the County.

It was not long before Mertilla went the way of Carthage, resulting in several buildings being moved. Some of the buildings ended up being located on farms as homes or barns.

The town of Plains, Kansas was located along the railroad which gave it an advantage for transportation and shipping cattle and agriculture products. Cattle abounding all over the prairie land, but once the steam engine arrived in the early 1900s the prairie land was converted to crop land. After World War I; the gasoline tractor replaced the steam engine and one way plow was invented by a Charlie Angell of Plains, this resulted in increased land being plowed under for farm land. At first corn was thought to be the crop but with rainfall being around 19 inches annually they soon turned to wheat that thrived and the elevator in Plains was busy during harvest. Plains was a boom-town in the 1800's and 1900's which led to businesses such as the bank, a newspaper, a drugstore, lumber yard, livery stable, and barbershop lined the streets. Plains laid claim to fame for the widest main street at 155 feet 5 inches storefront to storefront (Figure 4) and was featured in Ripley's "Believe It or Not".



**Figure 4**  
Main Street - Plains, Kansas

Hard times fell upon Plains as it did for many framers when the famous “dustbowl”, and from 1931-1937 about the only thing that grew around Plains was the mounds of dirt that covered farm machinery and even entire farm buildings (Figure 5). Some farmers followed the “Okies” to California and some suffered through the disaster and when rains came in the 1940s and World War II brought higher prices for their crops.

The Post Office in Plains was established as West Plains in Seward County on 5 December 1884 with Morris F. Roberts as Postmaster. It became part of Meade County in 1886 and on 31 August 1894 the town name was changed to Plains. At the time of our post card mailing a Louis H. Parsons was Postmaster of Plains being appointed 8 February 1899 and served until 8 March 1912.



**Figure 5**  
Dust Bowl Era

References:

Blue Skyways web:

<http://skyways.lib.ks.us/counties/ME>

Postmasters: <http://webpmt.usps.gov/> (input town and state)

[Return to June Contents](#)

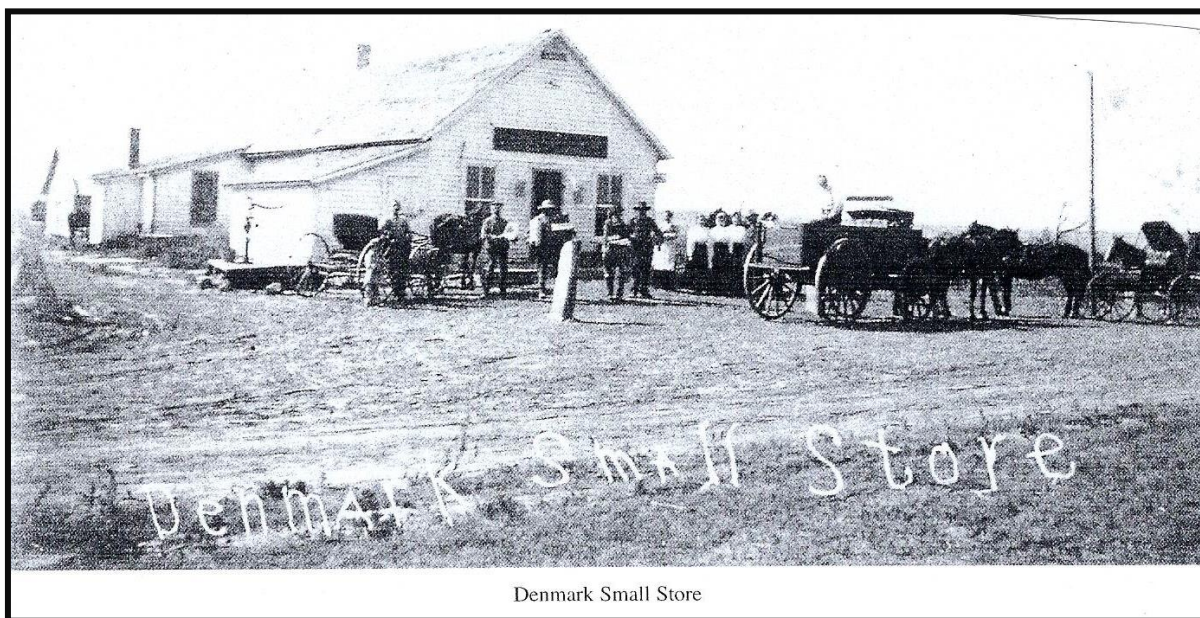
[Go to WSC Home Page](#)

## DENMARK, KANSAS by Jeff Lough

The small ethnic Danish community of Denmark, Kansas (Figure 1, Denmark 460, celebrating the fall of the Danish flag, the Dannerog, from heaven) in northwest Lincoln County has a little festival with Danish food and demonstrations of frontier crafts. This year's takes place May 24<sup>th</sup>. Denmark has an active Danish Lutheran Church with a remarkable ship hanging in the sanctuary symbolizing the early medieval Danish sailors who had sailed to various other parts of Europe and which now symbolizes the final journey to the Beyond. If one were to visit the town site they would find abandoned buildings and remnants of other structures from the late 19<sup>th</sup> and earlier 20<sup>th</sup> centuries that are reminders of the thriving small town that had a blacksmith/car repair shop, a general merchandise store plus a train depot, creamery, ice house, telephone switchboard, a lumber and coal company, grain elevator, hotel and schools. Until Dec., 1871 P. L. Jensen was Postmaster, from 1879 – 1881 Charles Colby was the Postmaster. These early post offices were in the general stores operated by the postmasters. From 1923 – 1941 Fred Skov was Postmaster and operated it out of his Denmark Cash Store with his wife Marsha. (Figure 2) Coal was mined west of Denmark and a vicious battle with Native Americans occurred nearby. There was even a bank robbery in 1932 during which \$68.00 was stolen.



Figure 1  
Denmark 460



The city of Denmark, Kansas was settled by refugees from the Schleswig-Holstein wars between Prussia and Austria. The Danish settling in Kansas did not want to fight in the victorious Prussian army and were enticed by the large area of very inexpensive land. Philatelically Schleswig-Holstein has been two different entities. One has been the German state of Schleswig-Holstein and the other was the entity for which a plebiscite following World War I (Figure 3) took place to determine whether the area of Schleswig should be part of Denmark or part of Germany. During the eras of the Holy Roman Empire and the Napoleonic conquest of northern Germany, Denmark controlled the Duchy of Holstein and the Duchy of Schleswig. After Napoleon's defeat Austria and Prussia struggled with one another for the dominance of Germany. Prussia defeated Austria in two key 19<sup>th</sup> century wars that were primarily over the domination of the Schleswig and Holstein Wars. These wars established Prussia's dominance in German speaking Europe. Before their seizure by Prussia in 1866 and their incorporation into the Second German Empire in 1870 the duchies issued their own stamps as a dual entity in 1858 (Schleswig-Holstein SN 3, Figure 4) and as separate entities of Schleswig (Schleswig-Holstein 22, Figure 5) and Holstein (Schleswig-Holstein 18, Figure 6) in

1860. Figure 7 displays an interesting commercial window cover from Richardson Engine Service and Supply in Wichita affixed with SN 1004 celebrating Betsy Ross Courtesy of Neal Danielson that had been provided what appears to be a pre-cancel. The other cover (Figure 8) is a form envelope used by the POD to send funds and business papers between post offices.



**Figure 3**  
Plebiscite



**Figure 4**  
Schleswig-Holstein 3



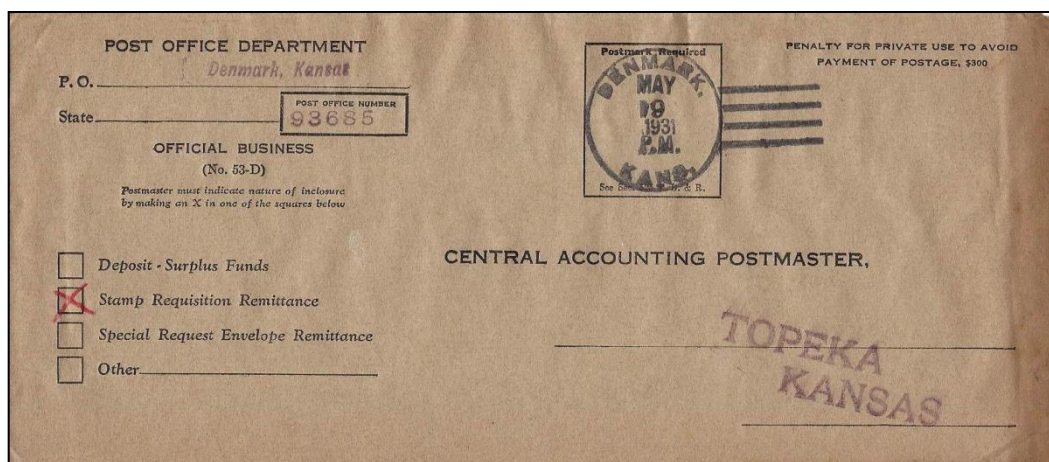
**Figure 5**  
Schleswig-Holstein 22



**Figure 6**  
Schleswig-Holstein 18



**Figure 7**  
Commercial Cover - Denmark, Kan.



**Figure 8**  
Post Office Department Cover - Denmark, Kans.

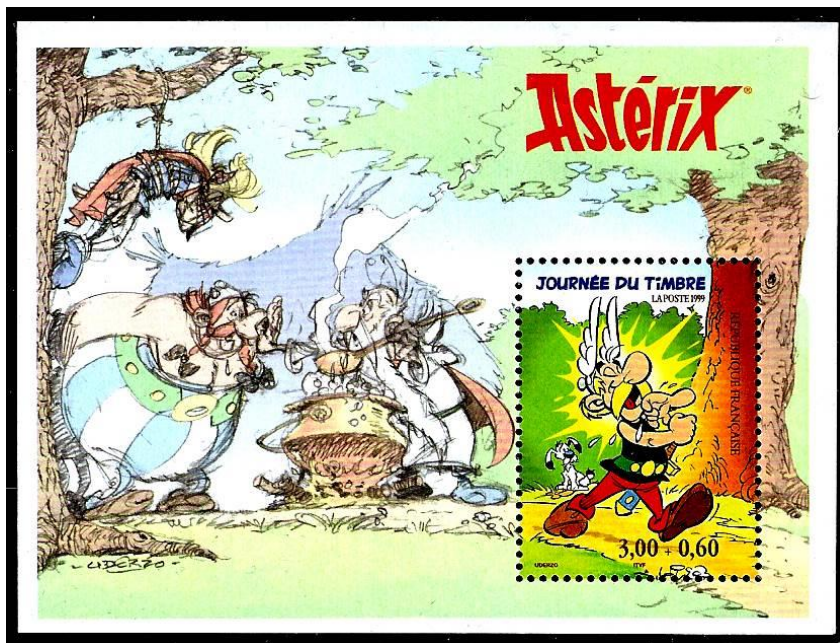
[Return to June Contents](#)

[Go to WSC Home Page](#)

## A COUPLE CLASSIC FRENCH AND BELGIAN CARTOONS by Jeff Lough

### ASTERIX

Asterix (Figure 1, France SN 2709A) is a feisty little Gaul holding out against Roman conquest (with the help of a magic potion that could confer a few minutes' irresistible strength with a single gulp). Several aspects of this character contribute to its lasting appeal among Europeans. The stories have a David and Goliath theme that parodies classical works of art and classical films. Caricatures of contemporary politicians also appeal to modern European sensibilities. Asterix was created and illustrated by Alberto Uderzo, and given a voice by Rene Goscinni. Uderzo had learned cartooning from *MAD* comics artists. He had created a cartoon version of the Blackfoot Indians holding off U. S. frontier conquerors called *Ompah-pah*.



**Figure 1**  
France 2709A Asterix

By 1969 two-thirds of all Frenchmen had read one of the 26 Asterix books. In 1965 the first French space satellite was named in his honor. A major French theme park is called Parc Astertix. And there have been two live action Asterix films starring Gerard Depardieu. Asterix has been very popular all over Europe and Canada.

### TINTIN

(See Figure 2, France 2764) *The Adventures of Tintin* is a series of comic books created by [Belgian](#) cartoonist [Georges Remi](#) (1907 – 1983), who wrote under the pen name [Hergé](#). The series was one of the most popular [European comics](#) of the 20<sup>th</sup> century, and it remains popular today. By the time of the centenary of Hergé's birth in 2007, *Tintin* had been published in more than 70 languages with sales of more than 200 million copies.



Figure 2  
France 2764

The series first appeared in French on 10 January 1929 in *Le Petit Vingtième*, a youth supplement to the fascist Belgian newspaper *Le Vingtième Siècle*. *The Adventures of Tintin* have been adapted for radio, television, theatre, and film.

Stories are set during a largely realistic 20<sup>th</sup> century. Its hero is Tintin, a young Belgian reporter. He is aided by his faithful fox terrier dog Snowy. Plots straddle a variety of genres: swashbuckling adventures with elements of fantasy, mysteries, political thrillers, and science fiction. The stories feature slapstick humor, offset by dashes of sophisticated satire and political or cultural commentary.

A cover of a book, using a philatelic suggestion, that contains three Tintin stories, is illustrated by Figure 3.

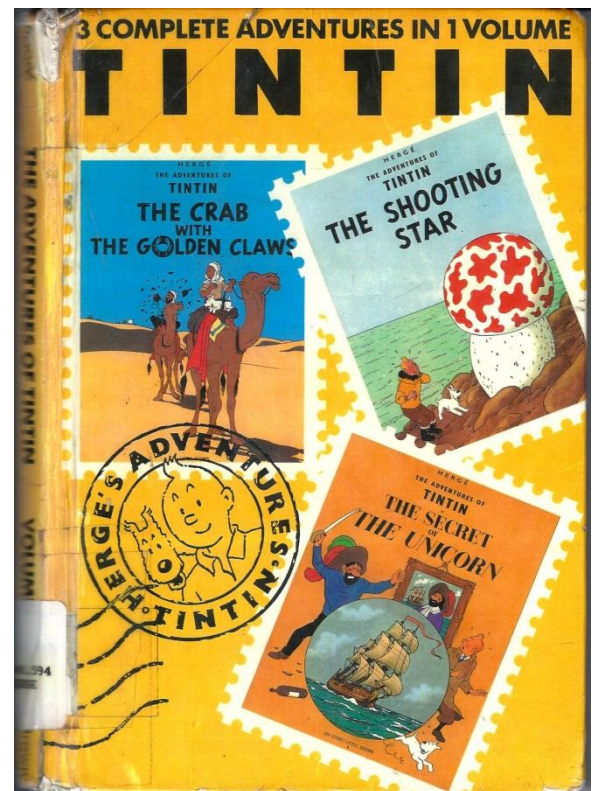


Figure 3  
Tintin Book Cover

[Return to June Contents](#)

[Go to WSC Home Page](#)

## A PAQUEBOT COVER by Jeff Lough

The accompanying corner card cover (Fig. 1) has several interesting components. The stamp is cancelled with the name of the steamship that carried it from Colombia to Hamburg, Germany. ALTAI was marked on the stamp by the ship's purser who kept the business accounts for the ship. Altai was originally built for the British-owned Atlas Steam Ship Line and was purchased with the other six of that company's fleet by the Hamburg Amerikanische Packetfahrt-Aktien Gesellschaft (HAPAG) in 1901.



Figure 1  
Paquebot Corner Card Cover

HAPAG had been founded in 1847 by a group of Hamburg merchants. At one time or another HAPAG operated over 400 ships worldwide. By 1871 it was becoming very active with the carrying of tropical fruit from the West Indies to Europe. HAPAG carried mail between 35 different locations in the Caribbean, New York, and Europe and had its own 10 cent private ship letter stamp (See Fig. 2) from 1875 until 1879 when the countries it served began to subscribe to the UPU treaty and such private stamps were not permitted. Such a private mail service was supported and used because political instability was a serious problem in several Caribbean nations such as Haiti, the Dominican Republic, and Colombia. German government sea post offices generally were not established on German ships to the West Indies and Caribbean areas because of light passenger traffic.



Figure 2  
Private Ship Stamp

Universal Postal Union regulations required a “paquetbot” mark like the “PAQUEBOT (N.Y 2D Div.)” mark and/or a regular postmark of arrival be applied to “loose mail.” Such a postmark may be the Hamburg postmark on the back (Fig. 3). Loose mail would be mail given directly to a ship’s purser outside of a bag of mail that had been processed at another location.

The use of the Colombian stamp indicates that the letter was posted at a dock or pier in Colombia. The stamp itself is interesting because it illustrates a site where a battle had been fought in October, 1739 between British North American colonial forces led by George Washington’s brother, Lawrence Washington, and the Spanish in that part of Spanish America now known as Colombia. That battle was part of the War of Jenkins’ Ear. British and British American colonial troops had taken positions near the Spanish Fort San Felipe de Barajas on the hill pictured on the stamp, La Popa. The Colombian stamp is an example of a stamp bearing sewing machine perforations. (Colombia 202b.)

The War of Jenkins’ Ear was a conflict between Great Britain and Spain that lasted from 1739 to 1748. Its unusual name refers to an ear severed from Robert Jenkins, captain of a British merchant ship, following the boarding of his vessel by Spanish coast guards in 1731. The ear was shown before Parliament and provided the impetus to war against the Spanish Empire.



**Figure 3**  
Back of Paquetbot Cover



**Figure 4**  
Poster Stamp

The use of company stationary suggests the letter was correspondence between two employees or with an employee's acquaintance. The written notation on the reverse (Fig. 3) has no normal address but includes an apparent individual's name, a person of apparent German ethnicity. It also includes the indication of a pier in New York. The third portion seems to be the name of the ship that carried the cover from New York to Hamburg in Germany (the Alfar). The letter arrived in New York on Dec. 10, 1902. It appears that the letter may have arrived in Hamburg on Dec. 22<sup>nd</sup>

The recipient of this piece of mail was a gentleman who apparently used a café in the St. Pauli area of Hamburg as a residence of record. In most cases mail carried by mail steamers was delivered to the post office in the city to which it was addressed. In some cases, the incoming mail would be advertised in the local newspaper for pickup at the post office or at the steamship's office for a fee, if not already fee-paid.

The accompanying company poster stamp was issued several years later after the cover had been mailed (Fig. 4).

Sources:

Schnell, Roger G. "Caribbean Purser Mail of the Hamburg American Packet Line" Pp. 51 – 76. *The 1992 Congress Book*. Columbus, OH: Fifty-Eighth American Philatelic Congress – American Philatelic Society, 1992.

Stone, Robert G. "Ship Mail and Postal Markings of the Hamburg-American Line on the West Indian Routes" *The Collectors Club Philatelist*, Vol. 32, No. 1 (January 1953), pp. 3 – 33.

[Return to June Contents](#)

[Go to WSC Home Page](#)

## **DON'T SWEAT THE SMALL STUFF** by Neal E. Danielson

This is the 57<sup>th</sup> in a series of articles relating to small post cards and small covers so if you have any in your collection that you would like to share please let us know.

This Small Stuff comes to you from Fonda in Montgomery County, New York by way of Herkimer in Herkimer County, New York and measures 4 5/8 inch by 3 3/4 inch which is slightly larger than past Small Stuff (Figure 1). The Post Office was originally established as Caughnawaga on April 1, 1807 or possibly earlier as this is the date that the Postmaster James Vorhees submitted his first financial return. The name changed to Fonda on July 27, 1836 when a Henry Veeder was Postmaster. At the time of the mailing the Small Stuff a Henry R. Royce was Postmaster being appointed to the position on January 19, 1888 and would serve until April 22, 1890. The cover in Figure 1 is franked with a 2 cent George Washington stamp (Scott #213) and a circular-date-stamp postmarked from Fonda, NY Oct. 4, 1888

Fonda is the County Seat of Montgomery County and is considered a village in the County. The Village of Fonda is part of the Town of Mohawk another Village in "Caughnawaga". The Village of Fonda derived its name from the Fonda Family that settled in New Netherland during the 17<sup>th</sup> Century. When Henry Fonda (Figure 2) wrote his autobiography the following quote provides an insight into the Family's settlement:



**Figure 1**  
Small Stuff Fonda, New York 1888



**Figure 2**  
Henry Fonda

*“Early records show the family ensconced in northern Italy in the sixteenth century where they fought on the side of the Reformation, fled to Holland, intermarried with Dutch burghers; daughters, picked up the first names of the Low Countries, but retained the Italianate “Fonda”. Before Pieter Stuyvesant surrendered Nieuw Amsterdam to the English the Fondas, instead of settling in Manhattan, canoed up the Hudson River to the Indian village of Caughnawaga. Within a few generations, the Mohawks and the Iroquois were butchered or fled and the town became known to mapmakers as Fonda, New York”.*

When the Erie Canal opened in 1825 the Village of Fonda began to thrive and increased even more in 1835 when the railroad arrived. Fonda was incorporated in 1850. Montgomery County is located on the north bank of the Mohawk River and was named in honor of Richard Montgomery an American Revolutionary War General who lost his life in the Battle of Quebec. He was born December 2, 1738 and died December 31, 1775. An Irish-born soldier who, first served in the British Army; he later served as a Major General in the Continental Army during the American Revolution War and is best known for the failed invasion of Canada in 1775. Montgomery was born and raised in Ireland and enrolled in Trinity College in Dublin in 1754. It was two years later that he joined the British Army where he fought in the French and Indian War. Montgomery County initially was an extremely large County beginning as Tryon County but change to Montgomery following the War. The County went through numerous divisions creating other Counties, including Herkimer County in 1791.

The Village of Herkimer has an American Dream background brought on as a result of the patriotic fervor to overcome almost continued hardships by the Villagers. Liberty and freedom is deeply rooted in the Village that was demonstrated by their active participation in the birth of this great nation. The region composing Herkimer County was part of the mighty Mohawks of the Iroquois Five Nations with the Mohawk River providing a path between the many settlements along its path. The early 1700s brought the Palatine Germans to the New York region who settled in the Mohawk Valley. Herkimer Village was started with the building of a blockhouse and church in 1722, then came the schoolhouse. Due to the number of German residents it soon became known as “German Flatts”. The settlers were determined to tame the land and have the ability to worship God in their own way.

Historically the German Palatines came from a region of Germany known as the Electorate of the Palatinate, although some were from other regions. The region was repeatedly invaded by French military, which brought about constant persecution. At first they went to England around 1709 and the British Government attempted to integrate them into society including England, Ireland and the Colonies. They transported several thousand by ships to New York in 1710, and most went to work in camps along the Hudson River, with about 850 families creating Germantown and Saugerties, New York. About 100 families were granted land west of Little Falls, New York , in what is now Herkimer County. The families settled on both sides of the Mohawk River and as more Palatine German families came they settled along the River for several miles and new villages grew.

Herkimer would eventually become the County Seat of Herkimer County. As for Postmasters in Herkimer their first one was a Chauncey Woodruff who also submitted his financial return on April 1, 1798 thus this is the earliest date for a Post Office. At the time of the Small Stuff arriving in Herkimer, a Henry M. P. Uhlee was Postmaster being appointed to the position August 29, 1894 and served until January 28, 1899.

[Return to June Contents](#)

[Go to WSC Home Page](#)