

Wichita Stamp Club Newsletter

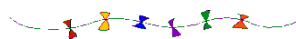


Vol. 81, No. 9, September, 2013

Neal E. Danielson
Editor



“Go Fly A Stamp”



Click on a link below in order to go directly to the article.

[Rainier Maria Rilke](#)

Artists on stamps

[Don't Sweat the Small Stuff](#)

A little gem from Watertown, NY

[Travel Kansas](#)

Z visit to Columbus in Cherokee County

[Herman Hearst Jr.](#)

An excerpt from his writings indicating that not all stamp collectors are so sober

[Go to WSC Home Page](#)

RAINER MARIA RILKE by Jeff Lough

“Denn das Schone ist nichts als des Schrocklichen Anfang...”

Rainer Maria Rilke was a great European poet of the final quarter of the 19th century and first decades of the 20th. This Bohemian-Austrian wrote most notably in German, and is commemorated by the accompanying Austrian stamp (SN 1049—Figure 1). He wrote as though “the most important things cannot be understood, only expressed—death, love, and suffering.” From October 1911 to May 1912 Rilke stayed at the Castle Duino, near Trieste, home of Princess Marie of Thurn and Taxis, who had married into the pioneering postal family (Thurn and Taxis SN 25— Figure 2). There, in 1912, he began the great poem cycle, the *Duino Elegies*. Rilke became a key intellectual bridge between the self-assured traditional European society of the middle 19th century and the profound age of disbelief, solitude, and anxiety that followed World War I. Rilke has been frequently quoted in television programs, books and motion pictures becoming one of the more popular, best-selling poets in the United States.



Figure 1--Rilke SN 1049



Figure 2-SN 25



Figure 3-France SN B52



Figure 4-UN 74



Figure 5--Wallis & Futuna SN 390



Figure 6-France SN 370



Figure 7--France SN 1016

Rilke and Auguste Rodin

After being awarded a contract to write a monograph on the artist, Rilke became deeply involved in the sculpture of Auguste Rodin (France SN B52—Figure 3). For a time he acted as Rodin’s secretary and lectured on the sculptor’s work.

Rodin is generally considered the father of modern sculpture. He possessed a unique ability to model a complex, turbulent, deeply pocketed surface in clay. Many of his most notable sculptures were roundly criticized during his lifetime. Rodin’s most original work departed from traditional themes of mythology and allegory, modeled the human body with realism, and celebrated individual character and physicality. Rodin remains one of the few sculptors widely known outside the visual arts community. Rodin’s work is illustrated on several stamps (United Nations SN 74—Figure 4) and Wallis and Futuna SN390—Figure 5). A current exhibit at the Nelson Art Gallery in Kansas City shows many of Rodin’s works including the great *Prodigal Son* from *The Gates of Hell* masterwork that had such a great impact on Rilke. This piece is shown in the background of the French stamp, behind the iconic *The Thinker*.

Rilke and Paul Cézanne

When asked to name the formative influences on his poetry, Rilke said that Paul Cézanne (France Scott SN 370 and SN 1016—Figure 6 & 7) had been his supreme example, and that “after the master’s death, I followed his traces everywhere.”

Paul Cézanne (1839—1906) was a French artist and Post-Impressionist painter whose work laid the foundations of the radically different world of art in the 20th century. Cézanne is regarded as the bridge between late 19th-century Impressionism and the early 20th century’s new line of artistic endeavor. Both Matisse and Picasso are said to have remarked that Cézanne “is the father of us all.”

Cézanne’s often repetitive, exploratory brushstrokes are highly characteristic and clearly recognizable. He used planes of color and small brushstrokes that build up to form complex fields. The paintings convey Cézanne’s intense study of his subjects.

[Return to September Contents](#)

[Go to WSC Home Page](#)

DON'T SWEAT THE SMALL STUFF by Neal E. Danielson

This is the 48th in a series of articles relating to small post cards and small covers so if you have any in your collection that you would like to share please let us know.

This Small Stuff comes to you by way of Watertown, New York through Corinth, New York. With all the 'hot' weather we are having I thought it would be nice to give thought to a cooler or colder time of the year. The Small Cover measures 4 1/16 inch by 2 13/16 inch and was franked with a 2¢ George Washington stamp (Scott #499) and tied to the cover with a flag cancellation postmarked from Watertown, N. Y. on Dec. 19 1919 and sent to an individual in Corinth, New York (Figure 1).

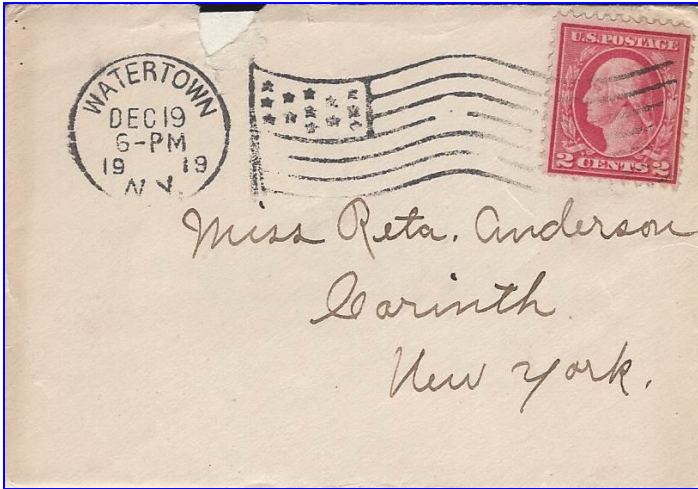


Figure 1--Small Stuff Watertown Cover postmarked 1919

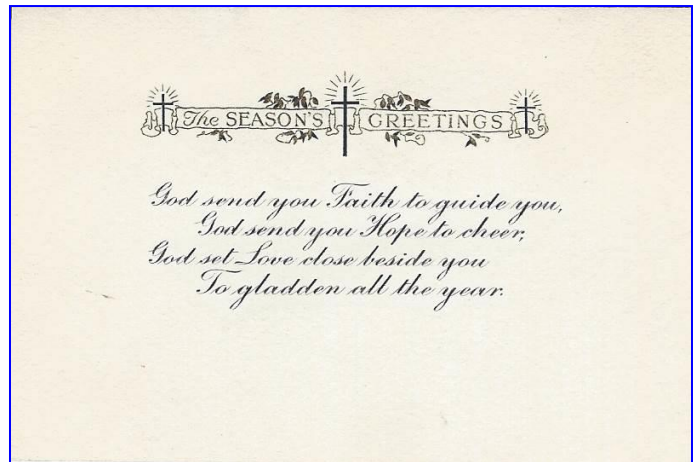


Figure 2--Greeting Card

Watertown is a city in the state of New York the County Seat of Jefferson County. The city is located about 20 miles to the south of Thousand Islands and lays claim to the U. S. Army Fort Dunn post. The city derived its name from the numerous falls up and down the Black River (Figure 2) and was one of the early manufacturing centers in New York. It is known as the birthplace of the Five and Dime, the safety pin, and home of the 'Little Trees' air fresheners. It was responsible for manufacturing the first portable steam engine in 1847.



Figure 3--Black River in Watertown

The town was first settled in 1800 by settlers from New Hampshire part of the large migration following the American Revolutionary War. These pioneer settlers favored the area due to the drop in the Black River as the river provided abundant water power for early industry. By the mid-19th century, entrepreneurs had built paper mills and major industries. The railroad arrived in 1851 and other mills rapidly joined the business base generating revenue to support public works projects

The cover contained a Seasons Greetings card (Figure 3) with a hand written note on the back “a Merry Christmas and Happy New Year is the wish of your Friend Edith”, who lived in Corinth, New York The card measured 4 inches by 2 ¾ inches.

Corinth is a town located in Saratoga County, New York and contains a village also named Corinth. Corinth is located north of Saratoga Springs, along the northeast border of the County. The town was first settled around 1775 near Mount McGregor and was formerly known as Jessups Landing as the town is located on the banks of the Hudson River in the foothills of the Adirondack Mountains. The town was formed by Hadley in the year of 1818. The area is surrounded by lakes, streams, and woodlands giving it beauty at every turn. The town derived its name after the ancient Greek city of Corinth and if you read the Bible you will find that St. Paul’s Epistle in the New Testament. Lumbering was the major industry during the early years with more than 30 sawmills. Following the Civil War several paper mills opened in the town. Corinth has the honor and privilege to be known as the “Snowshoe Capital of the World” (Figure 4) and show skiing is one of the favorite winter sports.



Figure 4-Snowshoers

[Return to September Contents](#)

[Go to WSC Home Page](#)

TRAVEL KANSAS—NORTH TO SOUTH—EAST TO WEST by Neal E. Danielson

Travel Kansas—Columbus located in Cherokee County in southeastern part of the State (Figure 1 & 2). Columbus, the County Seat, is located just about in the center of the County and intersects with the Kansas City, Fort Scott & Gulf Railroad with the St. Louis & San Francisco. The name ‘Columbus’ was given by a F. Fry, after the Capital of Ohio. The land now embraced by Cherokee and Crawford Counties was a part of the Osage Indian Tribal land prior to 1827 becoming neutral land designated by the Federal Government in order to separate the white and red men. The strip of land was fifty miles north and south by twenty-five miles east and west and was to be unoccupied.

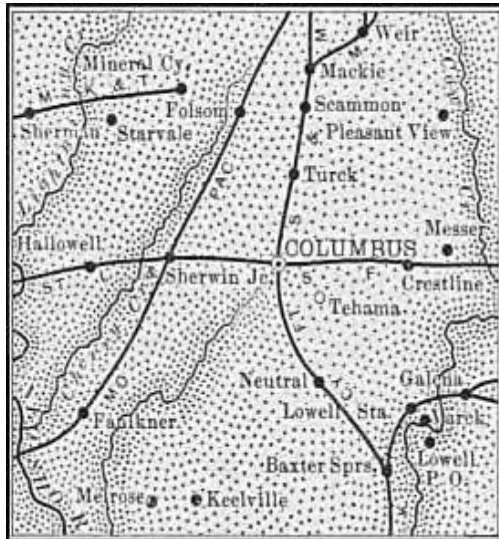


Figure 1-Cherokee Co. Railroad
Map ca 1899

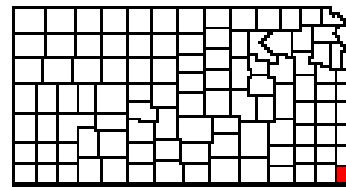


Figure 2--Cherokee County

The land in question came under several legal undertakings by politicians and settlers, as well as the Cherokee Indian Tribe. The land ended up having about twenty thousand settlers that lay claims under the homestead and pre-emption laws. It took several years to argue the rightful owners of the land. The first attempt of settlers establishing a settlement within Cherokee County was made in 1842 by a detachment of United State soldiers attempting to establish a fort on Spring River. The selected site was owned by John Rogers, a Cherokee Indian, and his asking price was \$4,000, but the soldiers limit was \$1,000, so they had to forgo the land and eventually built the fort at what is now Fort Scott.

Throughout all the troubles encountered between the settlers, the Federal Government and the Cherokee Indians, the County would grow from a population of 1,501 in 1860 up to 9,537 in 1870. The Cherokee County Agricultural and Horticultural Society was organized November 30, 1869 at Brush Creek Schoolhouse, in Spring Valley Township. The Cherokee County Teachers’ Institute held its first session October 20-22, 1869 at Lowell, with the most notable resolution passed by the Institute was one in favor of equal wages to male and female teachers.

Lead and Zinc ores was known by the Indians long before the white settlers arrived in the territory. In 1872 a positive discovery was made of the ore in the southeastern part of the County. Most of the Zinc was found along with the Lead, however there were a few mines dedicated to the Zinc ore. Not much was accomplished in mining the ore until 1877 when two miners from Joplin, Missouri, when they located a prospective site near Short Creek and obtained permission from the owner to dig a shaft and at about fifteen feet struck a rich vein of the lead mineral. It didn’t take long before the word spread of the discovery and towns like Galena and Empire City became ‘boom’ towns with increased population. 120 acres, not suitable

for agriculture, was sold to the West Joplin Lead & Zinc Company for \$7,000. The Galena Mining & Smelting Company acquired acreage nearby, and then the Railroad sold some land, bordering the Galena site, to the South Side Mining & Manufacturing Company. Initially the ore was shipped to Joplin to be smelted. Then in 1877 Galena Lead & Zinc Company built a smelter facility as an air furnace and blasts were added shortly afterwards. The Chicago Zinc Works out of Weir City was established in 1872 by the Chicago Zinc and Mining Company. The income from the Lead and Zinc business was a great boon to Cherokee County with Zinc deriving a greater income.

The town of Columbus received its first store on December 25, 1868 established in November by Dr. J. N. Lee. A second business was a grocery store built by Scovell & Hanson in the spring of 1869, this was followed by a dry goods and grocery store established by Bliss & Middaugh in August 1869. The first blacksmith was George Thorp opened in spring of 1869. The first select school opened in the Baptist Church in the spring of 1870, Miss Anna Wilson being the first teacher. The first public school was taught in a stone schoolhouse erected in the spring of 1871.

The first post office was established in 1869 with John W. Ritter being appointed postmaster on June 24, 1869. A post card (Figure 3) franked with a 1¢ Benjamin Franklin stamp (Scott #331) and tied to the card with a circular-date-killer-stamp postmarked Columbus, Kans. May 27, 1909. A Jesse Forkner was serving as postmaster, being appointed to the position December 9, 1902 and would serve until December 12, 1911 when a William E. McGhie was appointed postmaster.

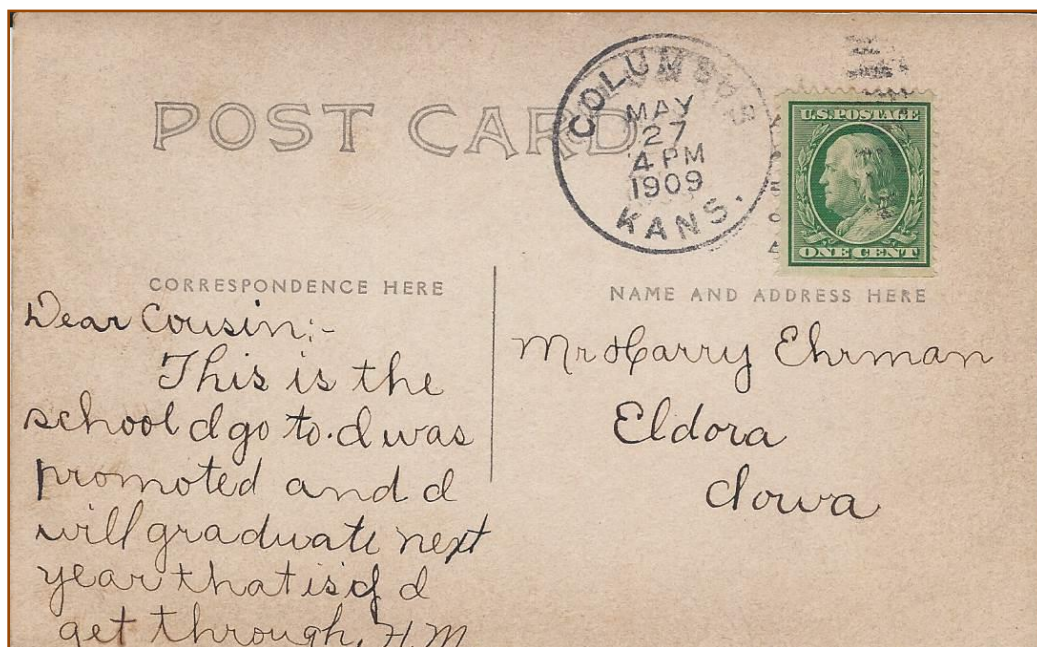


Figure 3--Post Card from Columbus, Kans 1909



Figure 4--Post Card depicting Pursel School

The post card depicts the Pursel School in Columbus, Kan. on the reverse side built in 1883 and served as the City High School until a new High School was built around 1900. Then the Pursel School was used as a grade or junior High School until it was torn down around 1911-12. It was just known as the “West side school building” until it was named in 1908 after a daughter of Horace Pursel, Helen Pursel Donehoo, who was a member of the first graduating class in Columbus in 1886. She was the first to deliver an oration in the building, hers being the salutatory address.** Horace C. Pursel arrived in Cherokee County in the winter of 1870 and served as Police Judge and Justice of the Peace in 1874 and in 1879 was elected Probate Judge for a 2 year term and was re-elected on November 7, 1882 for another 2 years. Mr Pursel was born in Pennsylvania in 1830 and raised on a farm and learned the blacksmith trade. He went on a government survey team in Minnesota for two years, then to Michigan and subsequently in Omaha and Council Bluffs. He came to Kansas in the fall of 1857 and lived in Atchison County engaged in mercantile business for nine years. From there he moved to Alabama and entered the cotton business for three years before returning to Kansas in 1870 where he again engaged in the general merchandise business for three years. He later became the first Postmaster of Muscotah, Kansas.

Some of the prominent business ventures established in Columbus during the formative years of the community included: Bee Hive Manufactory established by Scovell & Anderson in the spring of 1880. The company manufactured bee hives, comb foundations, smokers, and a general line of bee keeper supplies. The operation generally produces their products about nine months out of the year with the machinery operated off a twenty-horse power engine. They started publishing the *Kansas Bee Keeper* as a monthly magazine in February 1881. Mr. Scovell maintained a large apiary at his residence containing from 100 to 200 colonies. In the year 1882 Scovell had 120 colonies that produced 11,000 pounds of honey. The bank in Columbus was established in 1874 by B. F. Hobart and C. E. Middaugh and a L. L. Doubleday was Cashier. In May of 1875 Mr. Doubleday acquired Mr. Middaugh's interest and the firm continued as Hobart & Doubleday until 1880 when Mr. Hobart retired and John W. Ritter succeeded to his place in the firm resulting in another name change to Ritter & Doubleday, Bankers. The firm was a great benefit to the community. Columbus City Mills was acquired from Carthage, Missouri in 1875 by A. J. Baney and a Mr. Henley. The Mill changed hands numerous times from 1875 through 1882 resulting in a Mr. McGinity

becoming sole proprietor. The Mill is three and a half stories high with four run of burhs propelled by a 50-horse power engine.

References:

** Personal communications from Marilyn Schmitt, President, Cherokee County Kansas Genealogical-Historical Society, Inc.

Blue Skyways Website: <http://skyways.lib.ks.us/counties>

U. S. Postal Service Website: <http://webpmt.usps.gov/pmt003.cfm>

[Return to September Contents](#)

[Go to WSC Home Page](#)

HERMAN HEARST, JR. WRITING FOR A KANSAS PUBLICATION IN 1936

by Jeff Lough

Harlan M. Miller of Lawrence published several stamp collecting related journals with his printing/publishing company in Lawrence, Kansas from the thirties through the fifties. His *Kaw Chief Stamp Journal* had many interesting articles. A description of his business and that of other professional Kansas philatelic publishers will be made available in the near future. The following excerpts were taken from the March 4, 1936 issue. Besides written by the great Herman Hearst, Jr., the excerpts are interesting for their news about club membership and club activities.

Hearst, Herman, Jr. "*Bronx County Stamp Club News*"

"The Bronx County Stamp Club joined the circle of exclusive clubs recently by placing a limit on the enrollment, all applications for membership now being placed on a waiting list. As members are dropped or as they resign, new members will be accepted. As the membership approached the 150 mark it became more and more difficult to accommodate the membership in the club rooms,....The January 27th meeting featured an auction with a slightly inebriated auctioneer wielding the hammer. Other meetings featured the playing the game of "Lucky," an even welcome attraction. The outstanding social event of the year took place Monday, February 24, at which time the club rooms were filled to overflowing with members and their friends at the semi-annual Beer Party. Not only beer but other refreshments flowed freely to the 300 or so members and guest that were present."

It should be noted that Mr. Hearst provided information about more routine stamp club programs with members discussing their collections and interests.

[Return to September Contents](#)

[Go to WSC Home Page](#)