

Wichita Stamp Club Newsletter

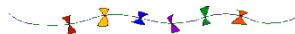


Vol. 81, No. 6, June, 2013

Neal E. Danielson
Editor



"Go Fly A Stamp"



Click on a link below in order to go directly to the article.

[Don't Sweat the Small Stuff](#)

A little one from Rockford, Ill.

[Travel Kansas](#)

Visit Cleburne in Riley County

[St. Louis World's Fair](#)

Presenting a wooden postcard with a little humor

[Wichita Business School](#)

Some interesting history of a local post

[Go to WSC Home Page](#)

DON'T SWEAT THE SMALL STUFF by Neal E. Danielson

This is the 45th in a series of articles relating to small post cards and small covers so if you have any in your collection that you would like to share please let us know.



Figure 1--Small Stuff Rockford, Illinois



Figure 2-Aerial View Camp Grant

This Small Stuff comes to us from Rockford, Illinois by way of Central City, Nebraska and it measures 4 1/8 X 2 13/16 inches (Figure 1). Rockford, Illinois is located in the far northern part of the State and spans both banks of the Rock River and is often called “The Forest City”. This mid-size city is located in Winnebago County, Illinois. Rockford was first settled in 1834-35 by three families and established themselves on the west bank of the River. The settlement initially called Midway but quickly became known as Rockford based on the ‘ford’ that spanned the River. The post office became a reality in 1837 with Daniel S. Haight being appointed postmaster and the settlement was incorporated in 1839 as a village, but it would be 1852 before it was chartered as a city. The city of Rockford had a very slow beginning but eventually it began to expand after about 10 years and became the County Seat of Winnebago County. The Rockford Water Power Company became a reality in 1851 and the Galena and Chicago Union Railroad arrived in the city in 1852. These two events was the beginning of an industrial center of Illinois and noted for the production of the John H. Manny reaper and other agricultural machinery.

The Rockford Union Furniture Company was organized in 1876, the first of some 25 area furniture factories that formed as cooperatives. By the 1880s the Rockford’s Swedish-born craftsmen and capitalists brought the city to a point that it was the second largest furniture manufacturing center in the United States, behind Grand Rapids, Michigan. By the turn of the Century changes had to be made due to war time and economic changes resulting in diversity in its industrial base. The oldest surviving Harley Davidson dealership was founded in Rockford in 1910 as a family owned business by the Kegel’s. In 1917 the United States Army opened Camp Grant (Figure 2), one of the largest training facilities in the nation for World War I infantry.

On December 23, 1915 the post-office in Rockford cancelled a letter sent to a Mrs. John Bankson in Central City, Nebraska. William H. Hifferon was postmaster at the time being appointed to the position January 4, 1915 and would remain postmaster until October 10, 1921. The cover is franked with a one cent George Washington stamp (Scott #375) and tied to the cover with a seven wavy line circular date stamp from Rockford, Ill on Dec 23 1915.

Central City, Nebraska is located in Merrick County, Nebraska and serves the city as the County Seat. The town was first passed by on the Mormon Trail in 1847 and was followed by the Oregon Trail and the California Trail. It so happened that a huge cottonwood tree, called Lone Tree, was a landmark by the pioneers, thus the settlement was first called “Lone Tree” when a post office was established and Edwin Parker was appointed postmaster on June 10, 1867. It would remain Lone Tree until April 26, 1875. Benjamin F. Lisk would service as postmaster since February 23, 1875 when it changed to Central City and remain until May 18, 1875. The first inhabitants of Lone Tree were the Pawnee and in the late 1700s battles between members of the tribes resulted in some 400 being killed near Lone Tree.

The name of the settlement changed to Central City when a petition was presented to the Merrick County Court (Figure 3) requesting the change from Lone Tree to Central City. The name “Lone Tree” was viewed as leaving the impression that the area was desolate, poor and uncivilized, thus would not bring in new settlers and thereby was a detriment to growth. Others countered that “Lone Tree” was viewed as being a beautiful spot and was a name that was dear to the pioneers. The proponents of the change won out and the Court officially changed the name. Central City would become a ‘boom’ town with the arrival of the second railroad, the Burlington & Missouri River. During this peak growth three banks, hardware store, a roller mill, two newspapers, three lumberyards, a cracker factory, a cigar factory, a new brick school, nine churches and the Nebraska Central College, came to pass.



Figure 3-Merrick County Courthouse

[Return to June Contents](#)

[Go to WSC Home Page](#)

TRAVEL KANSAS—NORTH TO SOUTH—EAST TO WEST by Neal E. Danielson



Figure 1-Riley County
Railroad Map ca 1899

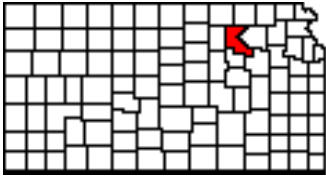


Figure 2-Riley County

Travel Kansas—Cleburne located in Riley County (Figures 1 & 2) and is considered one of the river towns in the County. Cleburne is located in Swede Township along the Union Pacific Railroad on the Big Blue River north of Manhattan, the County Seat. The town of Cleburne received its name from John C. Cleburne, a railway superintendent. Riley County received its name as a result of the military post of Fort Riley along with General Benjamin Riley an officer in the United States Army. Riley's first service in Kansas was on Cow Island with Captain Martin in 1818 and he followed Colonel Leavenworth as commandant at Fort Leavenworth. Cow Island, located in the middle of the Missouri River was the first Kansas military post, which the French called *Isle au Vache* and has been referred to, in time, as Buffalo Island. Apparently the Indians stole a cow and took it to the Island resulting in the name Cow Island. In 1852 a Col. T. T. Fauntleroy, in a letter to the Quartermaster, General Jessep of the U. S. Army, while he was in Washington D. C, recommended establishment of present day Fort Riley. Fauntleroy's theory was to concentrate troops at the new Fort and discontinue the Posts at Leavenworth, Scott, Atchison, Kearney and Laramie. At first the encampment was called "Camp Center, at the mouth of the Pawnee River." It took the name of "Fort Riley" on July 26, 1858.

The physical features of the county include about 20 percent bottomlands and 80 percent uplands, with 95 percent of the land being classified as prairie. Only six percent of the land is considered forest. There are quite a variety of timber in the County, including cottonwood the most abundant and several kinds of oak and elm; black walnut, soft maple, hackberry, hickory, locust, ash, linden, sycamore, mulberry, box elder, and coffee bean make up the forest tree population. Cultivated groves include soft maple, black walnut, locust and cottonwood are quite common. The cultivated orchards include apples, pears and peaches in copious amounts. The Big Blue forms the larger portion of the eastern boundary of the County, which flows into the Kaw east of Manhattan. A large part of the Kansas River between the Big Blue and the Republican Rivers has some of the 'garden-lands' of the State. Steamboats came up the river to Manhattan during the territorial days, thus the area prospered believing that the Mississippi, Missouri, and Kansas Rivers would reap the benefits of Federal Government appropriations in order to carry products of the soil down river on barges to the Gulf of Mexico where they would be shipped to the Old World.

The northeast part of the County, and its area is about fifty miles is called the Swede Creek Township. The Township was organized on August 4, 1879 with H. H. Rice being the first Trustee. He was followed in 1880-82 by Frederic Toburen. The post-office was in Big Timber on December 5, 1878 with Maynus Vilander as postmaster. The post-office would be called Big Timber until November 12, 1886 when the name changed to Cleburne. The Cleburne post-office would close July 31, 1960. Swede Creek Township name was derived from the creek that flows through it. The Swede Creek was named to honor a Scandinavian, by the name of Peter Carlson who settled in the area in 1857.



Figure 3--Johnson Brothers Store ca 1907

Other Scandinavian immigrants settled in the Swede Creek area including L. Pierson in 1858 just below the mouth of the creek, then a Dane, N. Christenson, settled a little further down along the Big Blue. The Meyer Brothers arrived later in 1858 and Frederic Toburen, a Trustee made a settlement in the township. He later moved his parents and his brothers, Herman and Adolph to the settlement. The German Evangelical Church erected their structure in 1877. Eventually the township contained two frame schoolhouses and three stone schoolhouses. The settlement prospered and became a thriving community with structures such as Johnson Brothers store (Figure 3).



Figure 4-Birthday Greetings post-card Cleburne, Kans. in Danish

The community enjoyed several families from the Scandinavian countries, such as Sweden, Norway, and Denmark, as was noticeable in other settlements throughout the County. Many individuals would learn English but often communicated in their homeland language. Figure 4 is a Birthday greeting post card Postmarked from Cleburne, Kans on Oct 2, 1912 franked with a one cent Benjamin Franklin stamp (Scott #331) and tied to the post card with a four-bar balloon cancel and sent to a Mrs. Adolph Peterson in Stockdale, Kansas R. F. D. The Birthday Greeting post card was from a M. B. and the message is in Danish: *“Happy and Joyous Birthday and many more to come with good health and blessings we wish you. Sincerely M. B.* The reverse side had a message in English “Many Happy Returns of the Day” (Figure 5). The Stockdale post-office was opened on April 29, 1872 and closed on April 22, 1943.

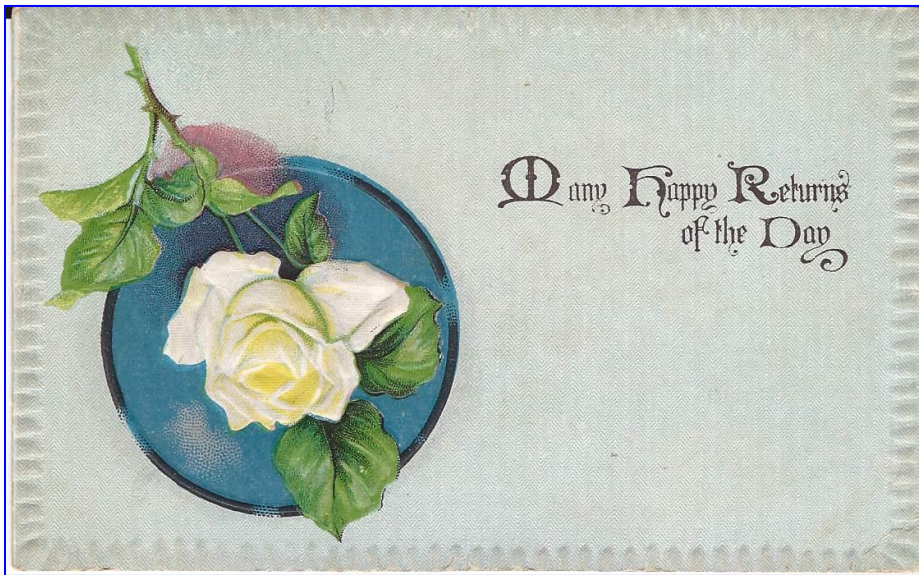


Figure 5-Birthday Greetings on Reverse Side (Reduced in size)

References:

Blue Skyways website: <http://skyways.lib.ks.us/counties>

Rydjord, John, “Kansas Place-Names”, University of Oklahoma Press, Norman, Okla. 1972

[Return to June Contents](#)

[Go to WSC Home Page](#)

MEET ME IN ST. LOUIS by Neal E. Danielson



Figure 1--Bird's Eye View of Fairgrounds



Figure 2--Bird's Eye View of St. Louis Fair

To usher in the 20th Century an international exposition was held in St. Louis, Missouri to commemorate the centennial of the 1803 Louisiana Purchase. However, it was informally known as the St. Louis World's Fair that was held in 1904. The Fair was delayed due to some flooding of the Mississippi and to also permit participation by more states. The result was that 43 of the then 45 states along with 62 foreign nations exhibited. The 1,240 acre Fairgrounds permitted 1,500 buildings and 75 miles of roads and walkways to be constructed, so if you were to give a hurried glance at each exhibit it would take over a week to tour (Figure 1 & 2).

The St. Louis World's Fair was held from April 30, 1904 through December 1, 1904. Keep in mind that 1903 was also the centennial of the Wright Brothers first flight in Kitty Hawk. The 1903 Louisiana Purchase initiated by President Thomas Jefferson, who in 1904 appointed Meriwether Lewis and William Clark to travel the land and document their findings from St. Louis to the West Coast of Oregon. The Fairgrounds featured industries, cities, private organizations and corporations, theater troupes, and music schools. There were some 50 concession-type amusements found on "The Pike"; which provided educational and scientific displays, exhibits and imaginary 'travel' to distant lands, and just plain old fashion entertainment.

The St. Louis World's Fair has been credited in bringing new foods to the market and some claims of introduction for the first time during the Fair. The most popular claim was the introduction of the waffle-style ice cream cone. This popular item was even used by the U. S. Postal Service in their *Celebrate the Century-1900's* Souvenir Sheet depicting two children holding an ice cream cone (Scott #3182e). Some say it was not invented at the Fair but it became popular at the Fair. There were other food items that laid claim to being born during the World's Fair, such as the hamburger and hot dog (both are traditional American foods), peanut butter, iced tea, and cotton candy. Two items, Dr. Pepper and Puffed Wheat cereal were first introduced to a national audience at the Fair.



Figure 3--Wooden Post Card from St. Louis World's Fair

What is the old saying “Don’t take any wooden nickels”. Well how about taking a wooden post card from the St. Louis World’s Fair (Figure 3)? The St. Louis World’s Fair was an opportunity for the Post Office Department to issue a set of five stamp commemorating the Louisiana Purchase Exposition (Scott #’ers 323-327) issued on April 30, 1904. The wooden post card is franked with one of these stamps the 1¢ Robert R. Livingston (Scott #323) and tied to the card with a double-oval St. Louis cancel that was popular during the Fair. The wooden post card was sent to an individual that lived in Germantown Philadelphia, Pennsylvania. The post card depicts a young lady dressed in the period attire and states “I am a Post Card From Miss Zoory” apparently referencing the young lady.

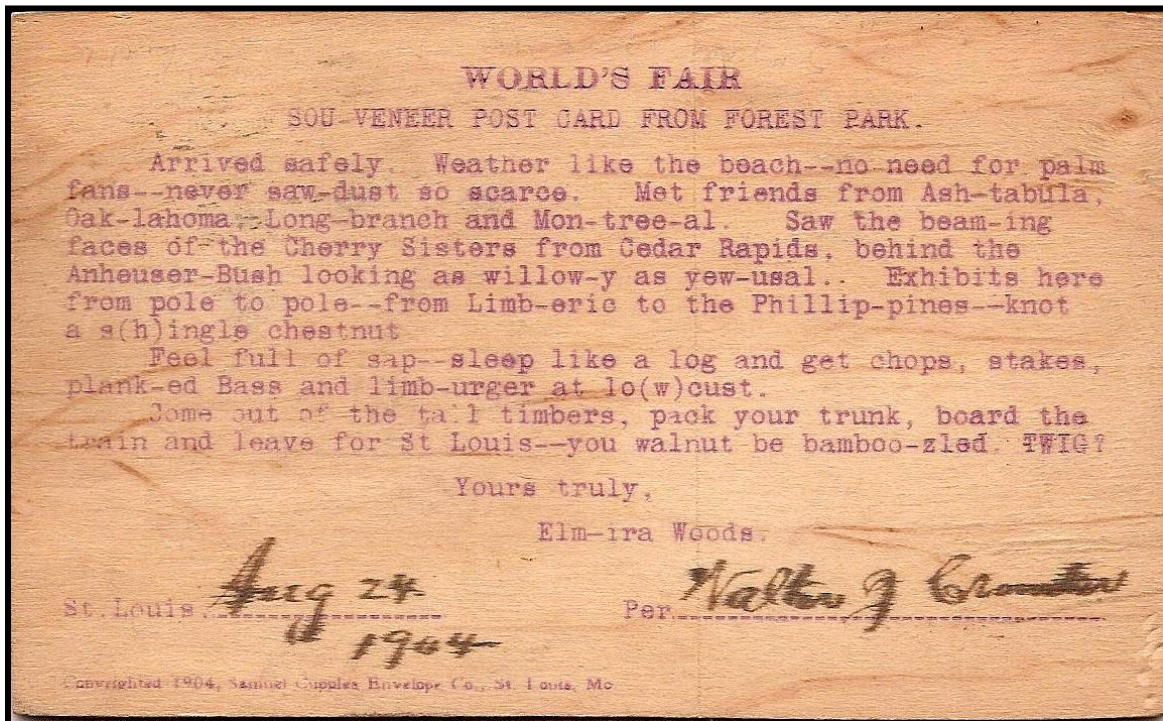


Figure 4--Message Side of Wooden Post Card
 Wichita Stamp Club Newsletter Vol. 81, No. 6 June 2013

The message side of the Wooden Post-Card (Figure 4) is unique in that it references all kinds of wood in the message itself. I have taken the liberty to reprint the message and underline the words that relate in some fashion to ‘wood’.

WORLD’S FAIR
SOU-VENEER POST CARD FROM FOREST PARK

Arrived safely. Weather like the beach—no need for palm fans—never saw-dust so scarce. Met friends from Ash-tabula, Oak-lahoma; Long-branch and Mon-tree-al. Saw the beam-ing faces of the Cherry Sisters from Cedar Rapids, behind the Anheuser-Bush looking as willow-y as yew-usal. Exhibits here from pole to pole—from Limb-eric to the Phillip-pines—knot a s(h)ingle chestnut.

Feel full of sap—sleep like a log and get chops, stakes, plank-ed Bass and limb-urger at lo(w)cust.

Come out of the tall timbers, pack your trunk, board the train and leave for St. Louis—you walnut be bamboo-zled. TWIG?

Yours truly,

Elm-ira Woods:

St. Louis: Aug 24, 1904

Per: Walter J. Crowder

Music was popularized during the Fair that inspired the song “*Meet Me in St. Louis, Louis*” which has been recorded by many artists. Both the song and the Fair were focal points for the film “Meet Me in St. Louis” released in 1944 and starring Judy Garland; it was also the inspiration to Broadway musical version. Scott Joplin was inspired by the elaborate waterfalls in front of Festival Hall when he wrote the rag “Cascades.”

People were also on display demonstrated by the people from Guam, Philippines, and Puerto Rico as a result of the Spanish-American War and the United States acquired new territories. Some of the displays included the Apache from the American Southwest and the Igorot of the Philippines, both were dubbed as “primitive”.

Geronimo was one of the notable visitors to the St. Louis World’s Fair and was photographed by William H. Rau, the fair’s official photographer (Figure 5). Geronimo was a famous former war chief of the Apache and was on display in the teepee in the Ethnology Exhibit. Other notables were John Philip Sousa who performed on opening day and several times during the Fair; Thomas Edison is said to have been in attendance; President Theodore Roosevelt opened the Fair via Telegraph, but did not attend until after the November 1904 election, stating that he did not want to use the Fair for political purposes. J. T. Stinson who introduced the phrase “An apple a day keeps the doctor away”, a well-regarded fruit specialist at one of his lectures during the exhibition.



Figure 6-1904 Olympic Logo



Figure 5--Geronimo 1904

The 1904 Summer Olympic Games were even held during the World's Fair at Francis Field, which had the first concrete stadium in the United States. With so many other events going on, the Olympics played second-fiddle to the Fair (Figure 6). The Olympic medals earned during the event have however, become very desirable, and the Games themselves an interesting research (Figure 7).



Figure 7-1904 Olympic Medals

Travelers to the World's Fair had the opportunity to visit the walled city of Jerusalem; a tea garden by the Japanese or a temple by the Chinese; a gigantic floral clock with hands that stretched 100 feet across; a sunken garden and even the actual log cabin where Abraham Lincoln was born. You could even ride a camel, a turtle or an elephant and if you are not into this type of transportation you could hire an automobile, rent a wheel chair, or even an Irish jaunting car. Visitors that were into mountain climbing could scale the Tyrolean Alps, visit a Blarney Castle or take in a fashion show courtesy of the Parisian. You could even go deep sea diving, ride a burro to cliff dwellings or experience the "Hereafter." You could explore the North Pole; walk the streets of Rome or stalk wild animals. The U. S. Navy was even involved in the Fair with the Naval Battle of Santiago where model ships provided a staged war on a miniature lake.

The accomplishments by the people of St. Louis were credited with the overall success of the St. Louis World's Fair. From the opening day on April 30, 1904 to the closing ceremonies on December 1, 1904 the Fair played host to nearly 20 million visitors, who had the privilege to witness the public debut of air conditioning, enjoy ice skating throughout the entire summer, and communicated by wireless telegraph to cities 1500 miles away. View the Southwestern pueblos to Eskimo villages to the jungles of the Philippines to the Tyrolean Alps, the gardens of Japan to the holy sites of Jerusalem. All this in 1240 acres of the Fairgrounds.

The people of Wichita even had an opportunity to enjoy a piece of the World's Fair when several pieces of statuary were moved from the Fair grounds to Wichita's Wonderland Park located at the time on Ackerman Island in the middle of the Arkansas River. However, due to their construction of plaster and cloth which did not stand up to the environment. Post Cards have been produced that show the statuary that was located in the Park. Some of the large timbers were used to build the Salvation Army Building located at 619-623 East Douglas at the time. Some of the large timbers from the main pavilion on the St. Louis World's Fair grounds were salvaged and used in the construction of the Johnson and Larimer Dry Goods Store in 1908. The building was later torn down to make room for a park. The city of Lindsburg, Kansas was given the Swedish Pavilion and was moved from St. Louis to Lindsburg.

References:

Wikipedia Free Encyclopedia website: St. Louis World's Fair 1904 and 1904 Summer Olympics

Wichita Architecture 1874-1947 by Gordon A. Davis & Julanne McCarthy, Wichita Public Schools, 1979/

[Return to June Contents](#)

[Go to WSC Home Page](#)

BUSINESS AS USUAL IN WICHITA by Neal E. Danielson

Ever wonder how so many Businesses survived in Wichita during the early years of this Western Frontier town with the likes of Wyatt Earp and Bat Masterson? Wichita just so happened to have some energetic business individuals and in 1883 the Wichita Business College was founded by Philo Lewis. The College was located in the McPherson block on North Main street, then moved to the Biting Building in the 1890s'. In 1901 Will G. Price and Frank A. Hibarger purchased the College and moved it to 114-116 North Market (Figure 1, sign above entrance cropped from Post Card) and (Figure 2, showing the entrance up to the College). In 1909 Mr. Price acquired Mr. Hibargers' half of the College making him the sole owner. When Mr. Price left the College in 1916 to open a car business, the College controlling interest was sold to W. J. Crum Family and Robert Pervis.



Figure 1-Entrance N. Market

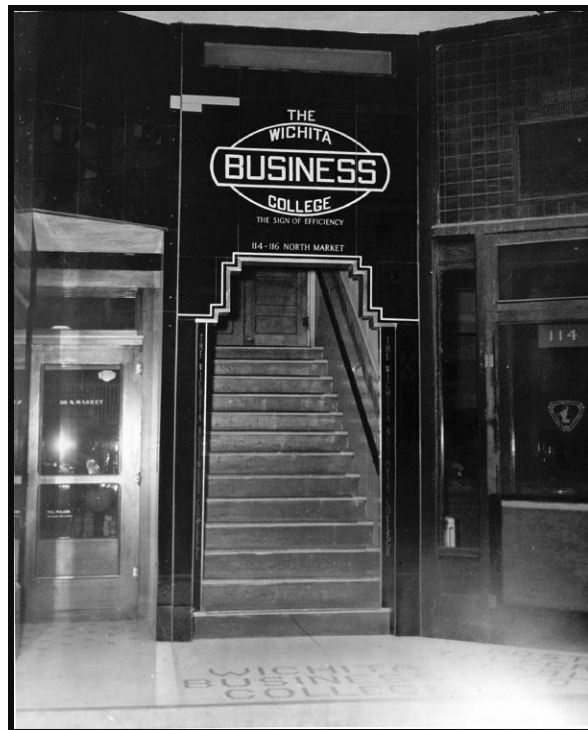


Figure 2-College Entrance Upstairs

The College had large Assembly Rooms for instructions (Figure 3). It became the largest business college in Kansas, Oklahoma, Colorado, New Mexico and Arizona according to the photo taken Aug. 29, 1911. From the time the College opened in 1883 to 1909 the school had trained more than 100,000 students from all over the world. A group of Wichita Business College students posed for a photo at the east entrance to the Post Office at Market and William in 1909 (Figure 4) including students from all over the world, the director of the College at this time was R. F. Miller.

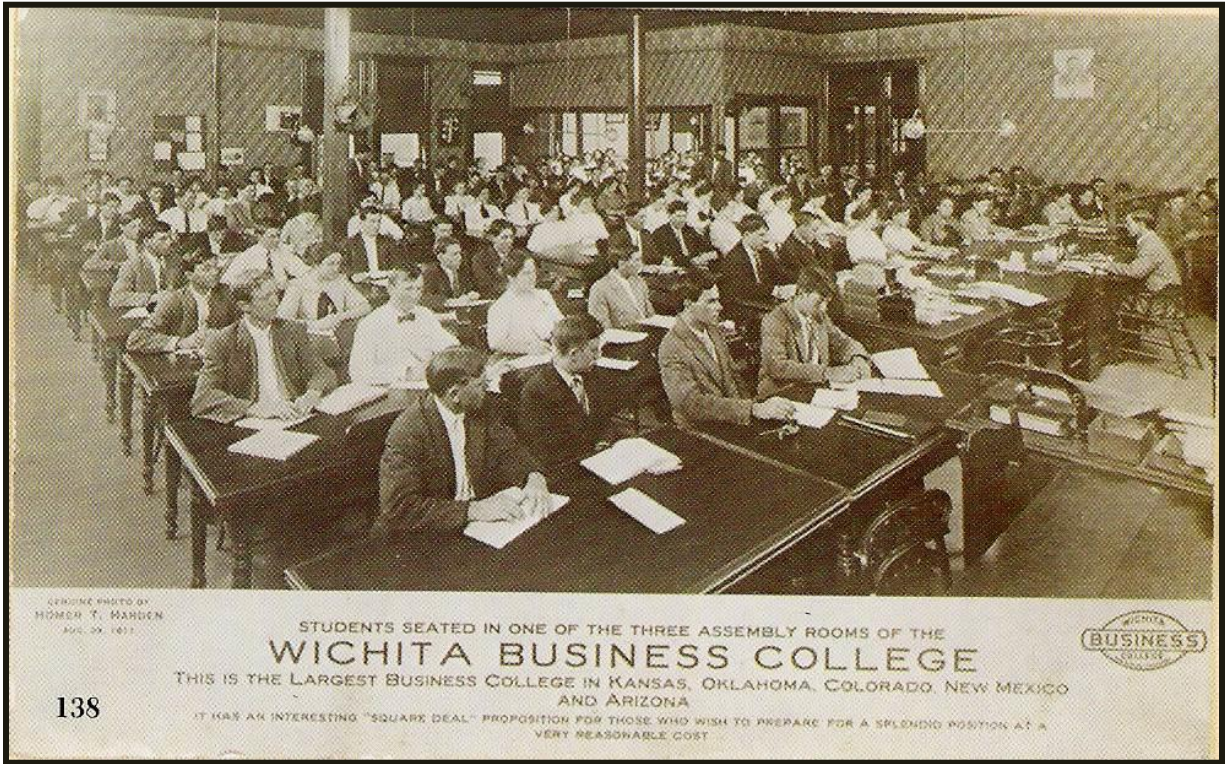


Figure 3--Assembly Room Wichita Business College 1911



Figure 4--Wichita Business College Students 1909

An interesting aspect of the Wichita Business College was their initiative in communicating internally with owners and staff. Figure 5 is a corner card cover from the Wichita Business College dated Dec 9 1924.

The College initiated the use of a Local Post 2 Cent Stamp along with a personalized cancellation device denoting “Wichita Business College” in an oval cancel with the center bearing the date “Dec 9 1924”. The corner card cover was sent by Mina Fulton to Messrs.’ C. V. Hunt, Co. located in Wichita. A hand stamp was used by the recipient indicating it was filled on 12-9-24, in File No. 2, and Filled Buy J. O. B. The corner card cover indicates that the College was located at 114-116 North Market St. in Wichita, Kansas, along with the following statements about the College: “Truth Guaranteed of all Advertising Statements”; “The Largest Business College in the West, Enrolls Students from 18 States and Several Foreign Countries.”; “Free Illustrated Literature”; “High-Grade Office Assistants Furnished”; and “The School with over a Quarter of a Century’s Record for Successful Graduates.”

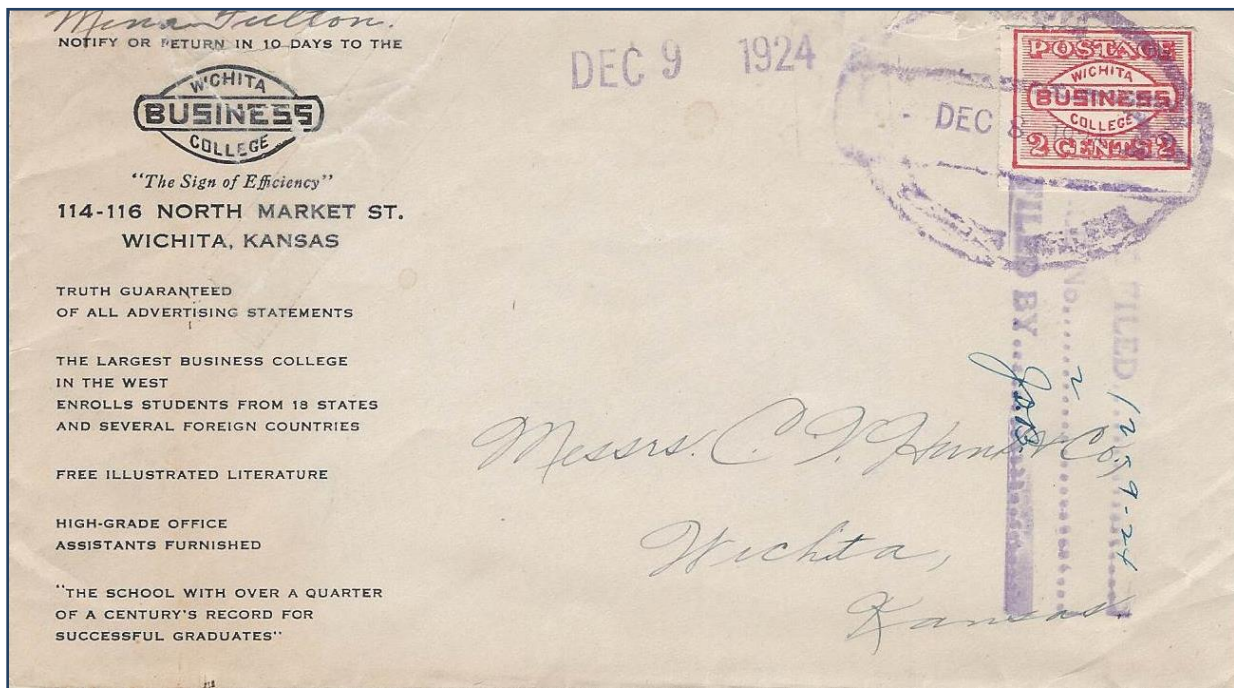


Figure 5--Wichita Business College Corner Cover Local Post

Another Cover franked with one of the Wichita Business Colleges 2 Cent Local Post Stamp cancelled on Dec 9 1924 and tied to the cover with the Colleges special cancellation device. The Cover was sent by John B. White & Co. JBW to Messrs. Crum & Company of Wichita, Kansas. The Crum Family was owners of the College during this time frame. I do not have any data on how the College was able to acquire a Local Post stamp to send mail from the College to outside individuals. Apparently the College had their own or contract courier service and this was a way to off-set the cost of delivering the College's mail.

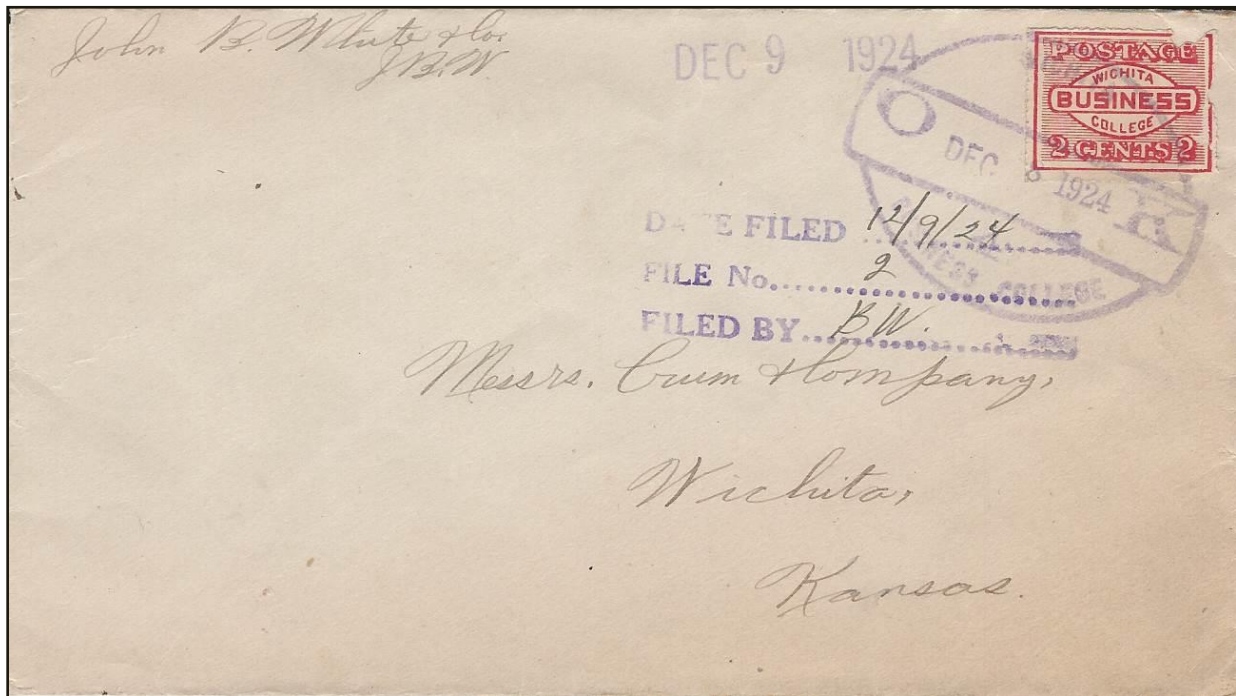


Figure 6-Wichita Business College Cover Local Post

When the Fourth National Bank decided to expand the Bank which was located adjacent to the College just to the South they purchased the space from the College in 1953 and the Wichita Business College relocated at 209 North Broadway.

References:

“Peerless Princess of the Plains, Postcard Views of Early Wichita”, compiled by Ross, Hal; Hal Ottaway, Jack Stewart; Two Rivers Publishing Co, Wichita, KS 67218, 1976.

Wichita Beacon, Wednesday, March 17, 1909.

Wichita State University Libraries, Department of Special Collections, Wichita Photo Archives.

Tihen Notes website

[Return to June Contents](#)

[Go to WSC Home Page](#)