

# Wichita Stamp Club Newsletter

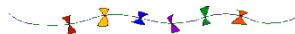


Vol. 81, No. 1, January 2013

Neal E. Danielson  
Editor



*“Go Fly A Stamp”*



Click on a link below in order to go directly to the article

## [Lost Territories and Lost Colonies](#)

The second in a series about philatelic entities long gone.

## [Travel Kansas](#)

Make a philatelic visit to Bazine, KS

## [Don't Sweat the Small Stuff](#)

This sweet little cover comes from Las Animas, CO

[Go to WSC Home Page](#)

## LOST TERRITORIES AND LOST COLONIES by Jeff Lough

### PART II: LOST COLONIES

The German Second Reich had become a great European power under Otto von Bismark with the defeat of the French Empire in 1870. It later suffered devastation at the hands of its third emperor, William II as a result of World War. During the fourth quarter of the nineteenth century Germany's fleet and some of its larger industrial interests had sought the beginnings of a widely spread mercantile empire throughout much of the world, including the Caribbean, China, the south Pacific, and Africa. After its defeat in World War I the Allies, including Portugal, Great Britain, New Zealand, the United States, Japan, and France seized colonies and territories in Africa, China, and the Pacific southwest. Portugal seized the very small German military enclave of Kionga in northern Mozambique. Other territories were "mourned" by individual German citizens as "lost colonies." One of the manifestations of this was the issuance of a set of cinderellas by a private German concern around 1920. This set of labels carried the Kaiser's yacht, the *Hohenzollern*, in its vignette. The illustration coming from the small sized and small valued definitives used by the German Empire on its final set of colonial issues.

#### Kamerun/ Cameroun/ Cameroon



Figure 1-a



Figure 1-b

The area of present-day Cameroon was integrated into French Equatorial Africa (AEF) during the "Scramble for Africa" at the end of the 19th century. However, in 1911 France ceded parts of the territory to German Cameroon, known as Neukamerun ("New Kamerun") and it became a German protectorate. Kamerun (Fig. 1-a) was a German colony first established as a protectorate of the German West African Company in 1885. Following years of little profits, the company was absorbed by the German Empire on November 13, 1903 and the then current set of German Imperial definitives were over-printed "Kamerun." (Fig. 1-b)

During World War I, Kamerun was occupied by British and French troops, and later mandated to each country by the League of Nations in 1922. The British mandate was known as Cameroons and the French as Cameroun. Figure 1-c is an example of a German Imperial definitive issued specifically for Kamerun overprinted "C.E.F." for the British Cameroun Expeditionary Force, for use by the British World War armed forces units occupying German west Africa. The French established the colony of Cameroun with the discontinuation of the League of Nations. A typical French colonial stamp is illustrated by Figure 1-d. During World War II the Free French forces, rather than the French Vichy government controlled Cameroun. Figure 1-e is an example of one of the Free French stamps issued for Cameroun. Following World War II each of the mandate territories was made a United Nations Trust Territory. An insurrection led by the Union of the Peoples of Cameroon (UPC) erupted in 1955 and was strongly repressed by the French Fourth Republic. Cameroun became independent as the *Republic of Cameroun* in January, 1960 and in October, 1961 the southern part of British Cameroons joined to form the *Federal Republic of Cameroun*. The

Muslim northern part of Cameroon had opted for union with Nigeria in May the same year.. Present day Cameroun (note the French spelling) is an independent country regarded as the Federated Republic of Cameroun. Figure 1-f is an example of that nation's philatelic contribution.



Figure 1-c



Figure 1-d



Figure 1-e



Figure 1-f

## German New Guinea

Germany began the occupation of the eastern half of New Guinea in 1895. (Fig. 2-a) As a German Imperial colony Deutsch New Guinea was served by the same set of *Hohenzollern* definitives provided other German colonies (Fig. 2-b). During World War I Australia occupied eastern New Guinea. The southern half of this area remains associated with Australia. The northern part has become the independent country of Papua New Guinea which issues its own stamps (Fig. 2-c).



Figure 2-a



Figure 2-b



Figure 2-c

## Togo

Togo (Fig. 3-a) had been a protectorate of the same German West African Company that controlled Cameroon. Togo used their own specially printed German imperial colonial definitives (Fig. 3-b). After the fall of the colonies to French (Fig. 3-c) and British (Fig. 3-d) forces overprints of stamps of those countries' nearby colonies were used in Togo. Part of Togo became the French colony of Togo and had its own French colonial stamps (Fig. 3-e). The other area historically known as Togo became a British colony. The French colony became the independent country of République Togolaise (Fig. 3-f).



Figure 3-a



Figure 3-b



Figure 3-c



Figure 3-d



Figure 3-e



Figure 3-f

## Kiautschou

Kiautschou (Fig. 4-a) Bay was a German colonial concession on mainland Imperial China from 1898 to 1914. Kiautschou originally was the result of a 99-year lease. It had an area of 213 square miles and was located around Jiaozhou Bay on the southern coast of the Shandong Peninsula. Because of its perceived importance to the German navy and the nature of Kiautschou's actual conquest it was uniquely controlled by the imperial navy rather than by the imperial colonial office. Germany invested heavily in streets, buildings, electrification, water and sewage, rail, and education. After the Chinese revolution of 1911, Wealthy Chinese chose to settle in the German controlled area and the surrounding areas because of its relative safety and the services. Kiautschou used the typical German imperial colonial definitives (Fig. 4-b).



Figure 4-a



Figure 4-b

## German Southwest Africa

German Southwest Africa (Fig. 5-a) began as a German protected city controlled by a private merchant. The city was secured by the German navy to protect it from British encroachment in 1884. The German Colonial Society for Southwest Africa took over in 1885 and greatly expanded German commercial interests to include mining. German Southwest Africa is noteworthy for its history of horrific slaughter of the native peoples by the occupying colonialists destroying the Herero people principally by denying access to water and the Nama people in armed conflict and forced labor. South African/ British and Boer troops invaded and took control of German Southwest Africa in 1914. It was at first a League of Nations mandate of Great Britain and later a United Nations mandate controlled by the South African governments. Namibia became an independent country in 1990 governed by the SWAPO Marxist liberation movement (Fig. 5-b).



Figure 5-a

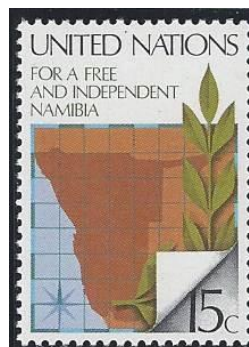


Figure 5-b

## Samoa

Germany, the United States, and Great Britain all struggled for influence and control of the Samoan Islands from 1886 through 1899 (Fig.-6-a). During this time independent Samoan entities issued their own stamps based on British currency (Fig.-6-b & Fig.-6-c). Later stamps were also issued by the British (Fig.-6-d). During the struggle a provisional government overprinted some of the British stamps. (Fig.-6-e)

The Samoa Tripartite Convention of 1899 gave Germany control of the islands west of 171 west longitude and the eastern islands to the United States (present-day American Samoa) (Fig.-6-f). American Samoa is a self-governing Commonwealth. The United Kingdom was compensated with other Pacific and West African territories.

German plantations imported Chinese laborers to grow rubber, cacao, and coconut. Germany exercised a comparatively high degree of cultural tolerance and established roads as well as medical and educational facilities for the natives. In 1914 the New Zealand Expeditionary Force invaded and took control of German Samoa. New Zealand stamps were used during the military occupation through 1920 and then New Zealand governed the islands as a League of Nations and United Nations mandate when several overprinted New Zealand sets were used. (Figs.6-g, 6-h, & 6-i)

. The area became known as Western Samoa for a period of time (Fig.-6-j). It gained independence in 1946.



Figure 6-a



Figure 6-b



Figure 6-c



Figure 6-d



Figure 6-e



Figure 6-f



Figure 6-g



Figure 6-h



Figure 6-i



Figure 6-j

## Mariana Islands

The Mariana Islands are the northernmost Pacific holdings of the former German Empire (Fig. 7-a). The actual island chain includes the island of Guam that has been a politically separate unit since 1898 when Spain ceded the island to the United States after the Spanish American War. In 1899 Spain sold the more northerly remaining islands to Germany. It was incorporated administratively into the German Protectorate of New Guinea. Figure 7-b illustrates a German imperial definitive produced for use in the Marianas. During and after World War I Japan occupied the Northern Mariana islands. They were used for sugarcane production. Since World War II the Marianas have been controlled by the United States. A current United States “State Flag” stamp (Fig. 7-c) celebrates the Northern Marianas as a Commonwealth of the United States.



Figure 7-a



Figure 7-b



Figure 7-c

## Caroline Islands

Spain sold the Caroline Islands (Fig. 8-a) to Germany at the same time the Marianas were purchased by Germany in 1899. They had been named for King Charles II of Spain who sponsored early Spanish expeditions in the area. Overprinted “Karolinen” stamps using current German imperial definitives were issued at first, followed by the issuance of the yacht series especially printed for the Karolinen Islands. (Fig. 8-b) In 1986 the Caroline Islands became part of the Federated States of Micronesia which maintains an association with the United States. Yap Island has been famous for its extremely large coinage.



Figure 8-a



Figure 8-b

## Marshall Islands

The Spanish sold the Marshall Islands (Fig. 9-a) to Germany in 1884 and they were subsequently administered as part of German New Guinea. German imperial colonial definitives (Fig. 9-b) were used until the Japanese occupied the Marshall Islands after World War I. After World War II the United States occupied the Marshall Islands. It is noteworthy that the Americans tested 67 nuclear weapons in the Marshall Islands and that many hundreds of millions of dollars have been paid the Marshallese Islanders for their exposure to U.S. nuclear testing. The Republic of the Marshall Islands is currently affiliated with the United States and has issued its own stamps (Fig. 9-c).



Figure 9-a



Figure 9-b



Figure 9-c

## German East Africa

Deutsch-Ostafrika (Fig. 10-a) began as a private imperially chartered “colonization society” in 1885. After struggles with the Sultan of Zanzibar, the British and several revolts by a local authorities and tribal groups Germany established a colony in 1890. German imperial colonial stamps were used (Fig. 10-b). Germany made significant improvements to the area’s transportation infrastructure and established a relatively strong educational program for the native Africans. The British and Germans fought long, significant battles in the region during World War I. After WW I the British received the areas bordering the Indian Ocean, Belgium received the northeastern area known as Ruanda-Urundi, and the Portuguese got the Kionga military base on the northern shore of Mozambique. The British ruled Tankanyika as a mandated area until it became independent in the 1960s and eventually became part of Tanzania with its unity with Zanzibar.



Figure 10-a



Figure 10-b

[Return to January Contents](#)

[Go to WSC Home Page](#)

## TRAVEL KANSAS—NORTH TO SOUTH—EAST TO WEST by Neal E. Danielson

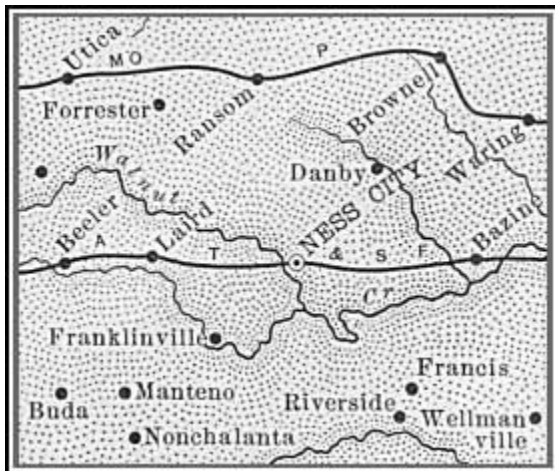


Figure 1--Ness County Railroad Map ca1899

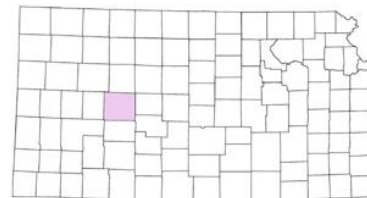


Figure 2--Ness County

**Travel Kansas—Bazine** located in Ness County, (Figures 1 & 2) in the west central part of the State. Ness County was created and named by an act of the Kansas Legislature of 1867, in honor of Noah V. Ness, Corporal of Company G, Kansas Cavalry, died from wounds received in battle at Abbeyville, Mississippi, August 11, 1864. As with most of the territory in western Kansas it took time for settlers to migrate to the area. The Chicago Settlement Company under the leadership of S. G. Rodgers began the first settlement of the county in 1873.

The first temporary County Seat was Smallwood City on January 7, 1874. On November 3, 1879 Ness City petitioned Gov. John R. St. John for county organization and was designated as temporary County Seat, but on November 20, 1879 Sidney petitioned for county organization and had 250 citizens' signatures, Gov. St. John designated Sidney as the temporary County Seat on April 14, 1880. Ness City eventually was granted the honor of being designated the County Seat of Ness County in June 1880, basically due to its geographical location in the center of the County.

The town of Bazine is located along the Atchison, Topeka & Santa Fe Railroad east to Ness City. The Railroad crosses the County from east to west on its way to Scott City in Scott County and on to Denver, Colorado. Bazine is considered the oldest town in the County being settled in 1872 by John Farnsworth and Samuel Repine who established 'dugouts' along Walnut Creek. Good supply of stone was available southwest of the town resulting in a number of stone structures that still stand today (Figure 3). A school was established and opened on 16 October 1879 and on 22 June 1874 a post office became a reality and is still operating. An interesting outcome for the High School in Bazine, that graduated their last class in April 1941 of 6 students, was sold on eBay for \$55,000 to a California man recently. Future students were transferred to Ness City or Ransom.



Figure 3--Stone Structure built in 1880

The First Methodist Church built their church in 1887 in Bazine. This was followed by the German Methodist Church being built and dedicated in 1910. The two churches finally merged in 1945. The German Methodist Church's building serving the combined congregation, from that time forward to the present (Figure 4). The first English church building was purchased by the Baptist. The German Church was started when a group of German immigrants from Russia began having a Sunday school in 1904. By 1946 membership in the German Methodist Church (combined) was at 327 even though five other churches were operating in Bazine.

Numerous covers can be found that were mailed to the Jacob Brenner Wine Co. in Doniphan, Kansas and Bazine, Kansas is no exception. A cover franked with a 2¢ Thomas Jefferson Louisiana Purchase Exposition stamp (Scott #324) and tied to the cover with a foot print killer cancel and circular-date-stamp postmarked from Bazine, Kans. Aug. 15, 1904. The cover arrived in Doniphan according to a back cancel on Aug. 16, 1904 and received at Jacob Brenner Wine Co. on Aug. 16, 1904 according to the hand stamp on the face of the cover (Figure 5). The cover was sent by a 'Crafts' in Bazine. You may recall that the Jacob Brenner Wine Co. has been portrayed in past Newsletters.

Adam Brenner, Jacob's brother arrived in Doniphan, Kansas on August 20, 1857 and was initially involved in the grain business, even building the first grain elevator in Kansas. He eventually settled into the manufacturer of native wines and brandies, under the name Doniphan Vineyards which comprised around 50 acres and manufacturing in excess of 30,000 gallons of wine. The medicinal qualities of the wines and brandies manufactured at these vineyards were known worldwide. The orders received daily, suffice to keep everyone connected with the immense establishment fully employed.



Figure 4--Bazine Methodist Church

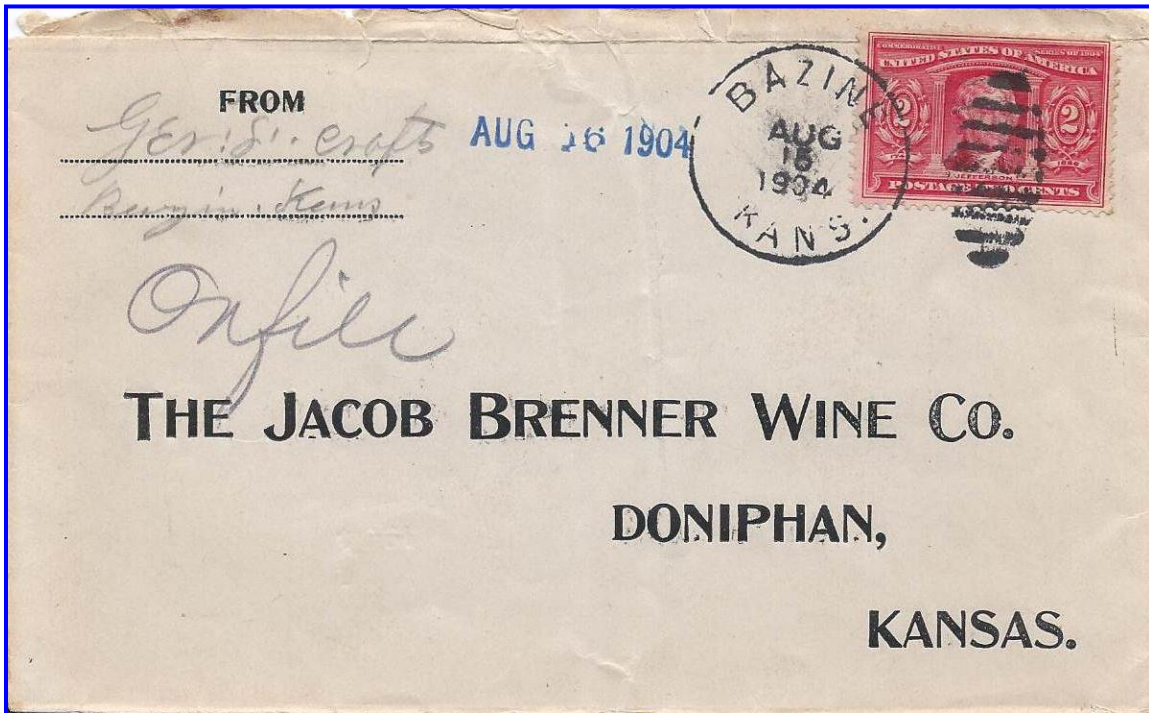


Figure 5--Bazine Cover postmarked Aug. 15, 1904

Jacob Brenner, came to Kansas June 7, 1860 and located in Doniphan. He was born in Deidesheim, Rheinpfalz, Bavaria, Germany, January 12, 1816 where he lived until traveling to Kansas. He was married in Deidesheim, Bavaria, July 5, 1841, to Miss Barbara Raufer, a native of Forst, Rheinpfalz, Bavaria. There were five children born to this union; George, Adam; Margaret, Mary and Nicholas. Mr. Brenner started the Central Vineyards in 1864, with only 200 vines, as a matter of experiment. He called his the Central because his vineyard lays between his brother Adams and his son Georges vineyards. Mr. Brenner attended to his vineyard personally, selling his productions as fast as he could get them ready for market. He had one variety of wine, the Taylor Bullit, which was not manufactured at either of the other vineyards, and of which

he had the monopoly of sale. The wine was said to of been much superior in quality, in the opinion of competent judges and connoisseurs, to any produced in Doniphan. He had a storage capacity of about 10,000 gallons. He did produce other varieties of wines, such as Virginia Seedling, Dry Catawba, White and Red Concord. He did not care much as to the quantity of wine he produced in a season, but was very careful as to its quality. Mr. Brenner made a specialty of wines for sacramental purposes, for which he received large orders daily.

Jacob's son George came to Kansas at the same time and was Mayor of Doniphan at one time. He was born in Germany, September 5, 1842 and married Miss Eugenia Frank in Doniphan in October 1866. He would serve as a clerk for his Uncle Adam in the general merchandise business. After spending time in Atchison and Iowa Point, Kansas he returned to Doniphan and in 1869 planted his first vineyard of only five acres. His Bellevue Vineyard grew to over 45 acres and manufactured wines amounting to 25,000 gallons annually.

The Doniphan wine business was one of the best in the county producing some 25 varieties of grapes, including Concord, Virginia Seedling, Elvira, Martha, Delaware, Catawba, and Goethe. The Doniphan wine trade extended into Kansas, Iowa, Missouri, Nebraska, Colorado, Texas, Michigan, and Montana, having large and regular customers in each State. Unfortunately the coming of prohibition in the 1880 and on into 1920 meant the end of the Brenner wine industry and unemployment for the workers. The vineyards gradually dwindled and converted to other agriculture products.

References:

Blue Skyways website: <http://skyways.lib.ka.us>

History of Kansas, Cutler <http://www.kancoll.org/books/cutler/doniphan/>

Bazine History: <http://www.filbertfamily.net/bazine.htm?Bazine=>

[Return to January Contents](#)

[Go to WSC Home Page](#)

## **DON'T SWEAT THE SMALL STUFF** by Neal E. Danielson

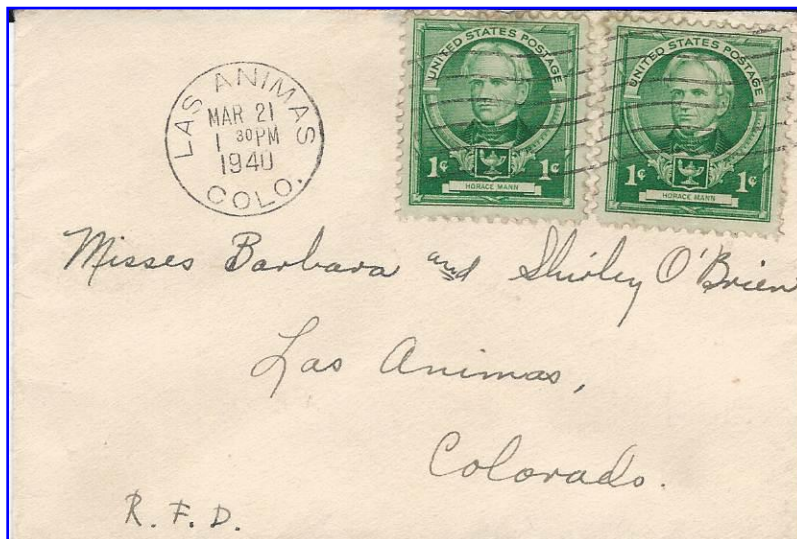


Figure 2-Small Stuff Cover-Las Animas, CO

This Small Stuff comes to us from Las Animas, Colorado and measures 4 1/8 inch by 2 7/8 inch. The Small cover is franked with two (2) 1¢ bright blue green Horace Mann stamps from the American Educators Issue Mar. 14, 1939 (Scott #869). The stamps are tied to the cover with a seven-wavy-line circular-date-stamp and postmarked from Las Anima, Colo. Mar. 21, 1940. The cover was sent to two people, possibly mother and daughter also of Las Animas that may have been an invitation to a children's party (Figure 1).

The town of Las Animas, formed on May 15, 1886, has an interesting and unique history. The city is a Statutory City<sup>1</sup> and the county seat of Bent County, Colorado and the only incorporated municipality in the southeast Colorado a few miles east of Pueblo. Las Animas is located on the Arkansas River, not far from the mouth of the Purgatory River at the confluence with the Arkansas River. The name origin of the town and the river came from travelers that were more than likely part of Coronado's expedition, called Conquistadors. Coronado died without the last rites sacrament of a priest and according to Catholic belief, their souls would go to Purgatory as a result. The original name given to Las Animas (*The Souls* in Spanish) was believed to be named *La Ciudad de Las Animas Perdidos en Purgatorio* (*The city of lost souls in Purgatory*). This explanation is not consistent with Spanish Catholic belief, as souls in purgatory are not lost, but in limbo for a short time of purification before ascending to heaven. Las Animas has an annual celebration for the Santa Fe Trail in celebration of the pioneers and traders who used this trail. The local event is the oldest Student Council-sponsored event in the U.S. The Student Council works in conjunction with the Bent County Chamber of Commerce.

1. *Statutory City* = A Statutory City is a municipal corporation with town privileges of city status, which also accomplishes tasks on an intermediate level of administration. Statutory cities therefore are not incorporated into the districts, but form urban districts in their own right.

[Return to January Contents](#)

[Go to WSC Home Page](#)