

# Wichita Stamp Club Newsletter

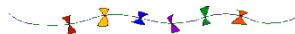


Vol. 81, No. 2, February 2013

Neal E. Danielson  
Editor



*“Go Fly A Stamp”*



Click on a link below in order to go directly to the article

## [A Mexican Cover](#)

A cover from Morelia

## [Don't Sweat the Small Stuff](#)

41<sup>st</sup> in the series. This one from New Orleans

## [Travel Kansas](#)

This time visit Adams in the southern part of the state.

## [Coin connection](#)

A cover post marked in 1946 from Hansan's Coin and Stamp Shop

[Go to WSC Home Page](#)

## ACROSS THE BORDER by Neal E. Danielson

Today we hear a great deal about Mexico and its border with the United States. However, a great deal of history comes out of Mexico, such as the expedition of Coronado out of Mexico into Kansas looking for the 'city of gold'. One of the towns in Mexico with a great history is Morelia in the north central part of the state of Michoacán in central Mexico. Located in the Guayangareo Valley and is honored to serve as the Capital of the State. The city was founded in 1541 and most of its layout remains today and the Mexican government lists 1,113 buildings built between the 16<sup>th</sup> and 20<sup>th</sup> centuries as having historical value. Only a couple of famous sites will be presented here. The Cathedral site being the first church built in 1577 (Figure 1) and the Casa Natal de Morelos considered the birthplace of Morelos as it was the home of José Maria Morelos y Pavón born in 1765 (Figure 2).



Figure 1--Cathedral of Michoacan



Figure 2-Casa Natal de Morelos

The Cathedral of Michoacán was designed by Vincenzo Baroccio and of the major churches of the colonial period this one and the Mexico City Cathedral do not face west, as was the traditional custom. It is unique in that it was dedicated to the *Transfiguration of Jesus* rather than the *Virgin Mary* and was consecrated in 1705. The east nave is dedicated to the shepherders and Wise Men of the Nativity. The Cathedral is built of pink cantera stone with its two 60 meter high towers dominate the skyline. The Casa Natal de Morelos originally building was destroyed in 1888 and a farmhouse built. This building was restored and turned into a museum in 1964. The building is a large mansion with a Neoclassic façade and a Baroque interior and contains numerous documents and belongings of Morelos including ones he signed, money he had coined, paintings and a large library.

A registered airmail cover postmarked from Mexico (Admon) in 1964 and franked with a 50c Carved head, Veracruz stamp (Scott #863) and an airmail stamp an 80c Mexico City University Stadium (Scott #C194) and tied to the cover with a circular-date-stamp was sent by a Rte. Sr. Carlos Honc H of Morelia, Mexico to a Mr. Oscar R. Romine in El Reno, Oklahoma (Figure 3). The front of the cover has a registered mail hand stamp bearing the number 5712 and a hand written note by the postal clerk that he was notified of the registered mail on 2-21-64. The reverse side of the cover contains two oval registered mail stamps "Correspondencias Registradas Admón. Feb 19 1964 -5- México" and a doublé circular-date-stamp (Figure 4 cropped).

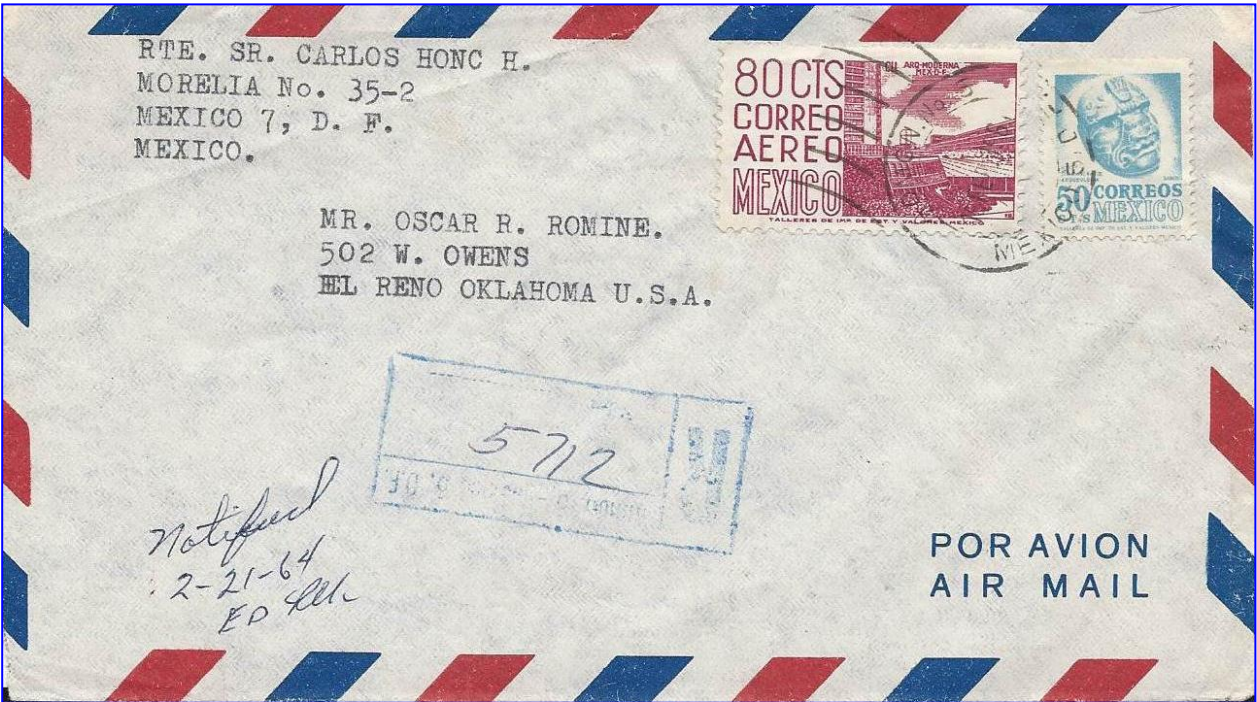


Figure 3-Airmail Registered Cover Mexico



Figure 4--Cropped Reverse Registered Cancels

I could not locate information on the sender but did find some information on the recipient Mr. Oscar R. Romine who was in the Filmography business in El Reno. He was born in 1903 and passed away the same year that the correspondence is dated in 1964. His wife Grace Wallace Romine was born in 1909 and passed away in 1999.

References  
 Wikipedia Free Encyclopedia website: Morelia, Mexico  
 Ancestry.com website: Romine

[Return to February Contents](#)

[Go to WSC Home Page](#)

## **DON'T SWEAT THE SMALL STUFF** by Neal E. Danielson

This is the 41<sup>st</sup> in a series of articles relating to small post cards and small covers so if you have any in your collection that you would like to share please let us know.

This Small Stuff comes to us from Cajon Country in the Deep South, New Orleans, Louisiana and Fayette, Mississippi. The cover measures 3 5/8 inches by 2 7/8 inches and is franked with a 2¢ George Washington stamp (Scott #499, Type I, 11 x 11 perf) and tied to the cover with a seven-wavy-line circular-date-stamp postmarked from Fayette, Miss. on Aug 10 1919 (Figure 1). Fayette is the County Seat of Jefferson County Mississippi located in the south western area of the state.

The Small Stuff was sent to a Mr. Eldon S. Lazarus at 902 Maison Blanche Bldg., in New Orleans, Louisiana, which is located on Canal Street (Figure 2). Maison Blanche was a department store in New Orleans founded in 1897 by Isidore Newman who emigrated from Germany. Mr. Bingle a popular Christmas mascot was introduced by Maison Blanche. The Department Store was acquired by City Stores Company in 1923 and merged with Loveman's in 1950. The store continued to go through several changes over the years including bankruptcy in 1979. Dillard's acquired the Maison Blanche chain and closed the Canal Street store. The building was acquired by the Ritz-Carlton. The store was heavily damaged by Hurricane Katrina and finally reopened on December 4, 2006 as the Ritz-Carlton Hotel, after \$106 million refurbishment.

Mr. Eldon S. Lazarus apparently was employed by Maison Blanche as one of their attorneys. Information obtained on Mr. Lazarus found that he graduated in the Class of 1903 from Harvard College and a Quindecennial (15<sup>th</sup> Anniversary) report generated on June 1920 listing him at the Maison Blanche address. Eldon S. Lazarus and another Lazarus argued cases before the Circuit Court of Appeals, Fifth Circuit on a number of occasions in Feb. 1912. He was appointed to the Committee on Correction of Inequalities in Dockets of the Civil District Court in 1920 and eventually served as Chairman of the Committee



Figure 1--Small Stuff Cover Aug. 1919



Figure 2--Maison Blanche Building Canal Street

[Return to February Contents](#)

[Go to WSC Home Page](#)

**TRAVEL KANSAS—NORTH TO SOUTH—EAST TO WEST** by Neal E. Danielson

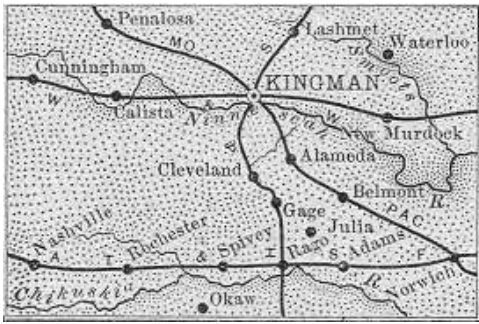


Figure 1--Kingman Co. Railroad Map ca1899

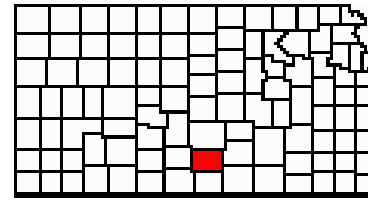


Figure 2--Kingman County

**Travel Kansas – Adams** located in south east part Kingman County, Kansas (Figures 1 & 2), along the Atchison, Topeka and Santa Fe Railroad. As with many other towns in Kansas, Adams history began in the 1880s when more and more settlers moved westward in Kansas and develop the land. The town of Adams was named after the first township trustee A. C. Adams. When the settlers arrived they did not find a lot of timber, and not having a lot of possessions the progressive settlers built sod houses or dugouts. Adams first community school and church was a sod house. The school term was only three-month, held in late summer and early fall. The first record of a school was the Sunrise, District 50, built in 1884 located east and north of present day Adams. The first teacher, Clay Elliott, rode five miles to the school and the school term had expanded to eight months. The Adams Grade School was built in 1914 when Sunrise disbanded and in 1916 two basement rooms were leased to the High School, the first in Kingman County. The High School was later built adjacent to the Grade School. The High School closed in 1963 and the Grade School in 1967.

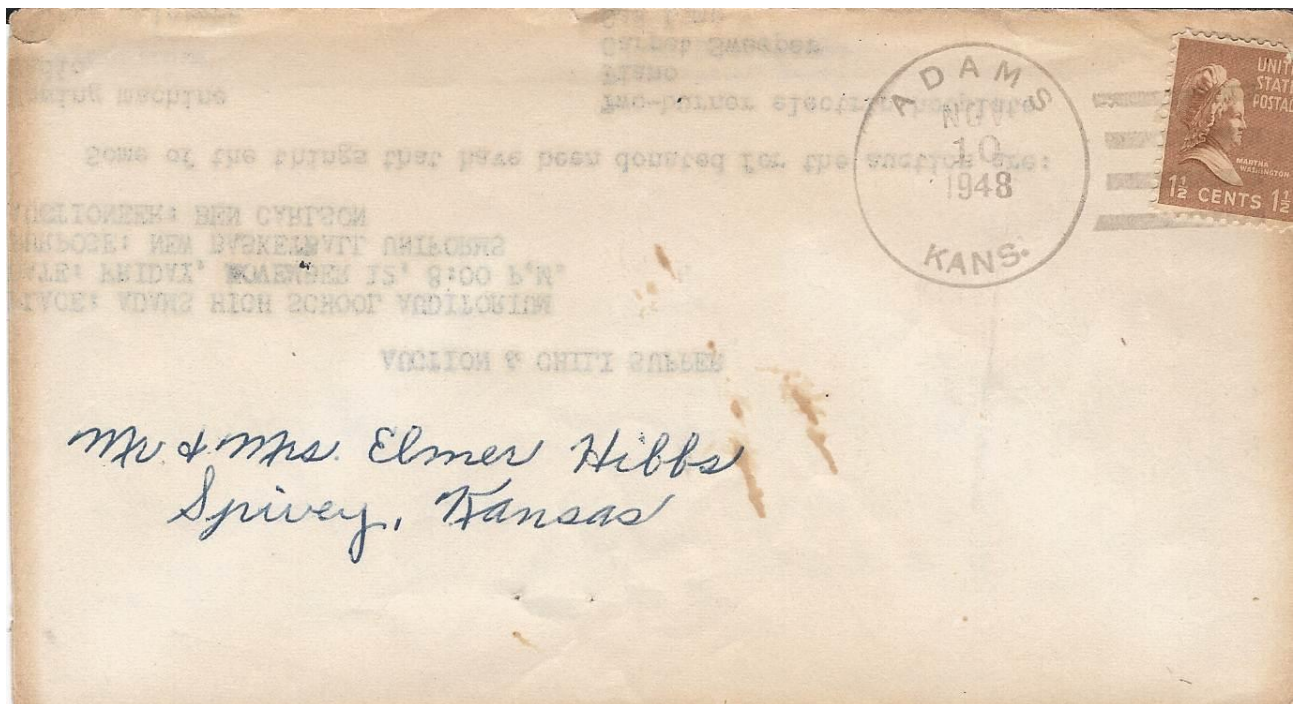


Figure 3--Philatelic Cover Adams, Kans. 1948

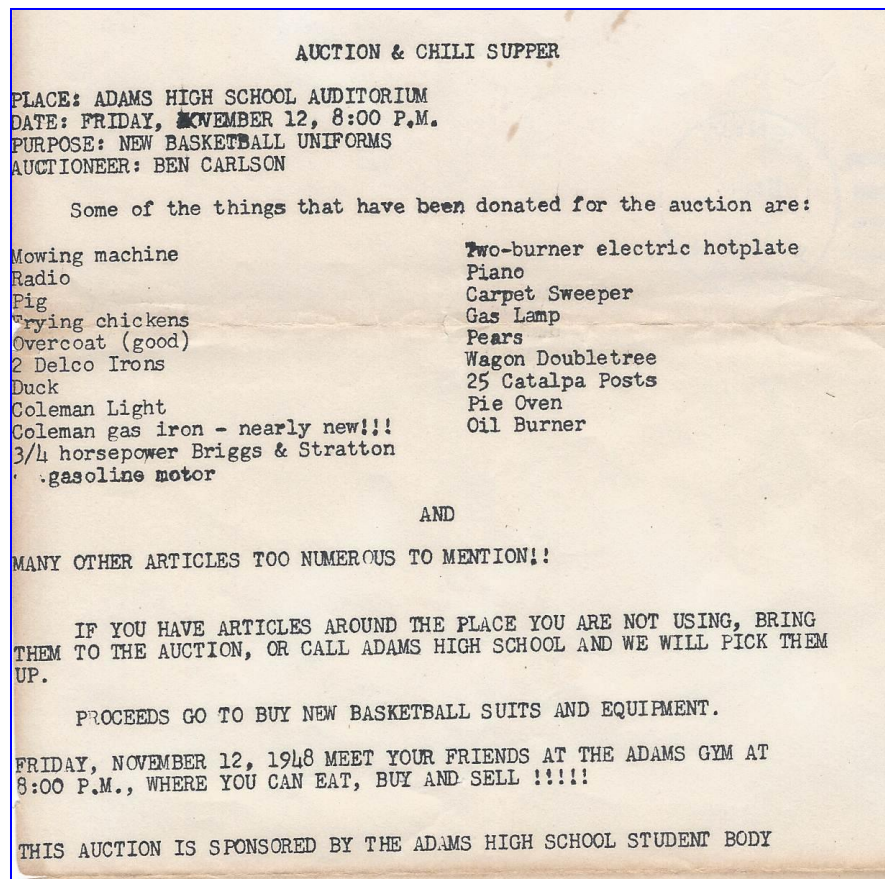


Figure 4--Flyer Cover postmarked Adams, Kans.

An interesting philatelic item postmarked from Adams, Kans. Nov. 10 1948 and franked with a 1 ½ ¢ Martha Washington (Scott #805) issued May 5, 1938 and tied to the cover with a four-bar circular date stamp (Figure 3). The item is a notice announcing the Auction and Chili Supper on November 12 to help raise funds for the High School to purchase uniforms for their Basketball team, the event being sponsored by the Adams High School Student Body (Figure 4).

According to the flyer, it lists several items that had already been donated for the cause and left open the opportunity for others to donate; they would pick them up if unable to deliver in person. Items already donated included a Piano to a Duck.

When the Atchison, Topeka and Santa Fe Railroad was built, the workers established a comp in the pasture near Adams. The workers did not erect a depot initially but built a platform and made a sign noting 'Adams' and flag the train for passengers. A caboose was used for a deport until one was finally constructed in 1915. Business was good as a result of shipping cattle and grain, with most of the Cattle going to Kansas City. The first Post Office was established in a village north of Adams as a result of Charles Wuensch constructing a store in Mabel. The Post Office in Mabel on June 10, 1884 and closed and moved to Adams and established on January 26, 1895 and eventually closed on February 28, 1954. The town of Adams was not platted until 1916.

Kingman County is located in the south central part of Kansas, with the town of Kingman being the County Seat. Kingman was one of the towns where the "Cannonball Express" became a reality (Highway 54). This event happened back in 1876 when a flamboyant and colorful man by the name of Donald R. "Cannonball" Green (1839-1922) operated a stage line connecting railroad to towns in the south west part of

Kansas that did not have rail service. His first stage line provided service from Kingman through Pratt and to Coldwater, a 100 mile trip. Green would later expand his stage line to Greensburg where he teamed up with other men to establish the town of Greensburg.

Green would go on to represent Greensburg and Kiowa County in the State Legislature and this was a period in his life when he acquired the nickname "Cannonball". As the railroad moved westward so did Green and in 1889 he contracted with the Chicago, Kansas and Nebraska Railroad to carry passengers to the land known as Indian Territory (Oklahoma). In 1893 he himself made the run into the Cherokee Strip and staked a claim north and west of Pond Creek. He was not successful as a farmer as his skills were driving a stage coach. Green died in 1922 at the age of 85 in Long Beach, California. When Woody Hackaday began plotting out a route for U. S. Highway 54 he followed the Cannonball Highway between Kingman and Greensburg.

References:

Wikipedia Free Encyclopedia website: Kingman County

Cannonball Express Highway website

[Return to February Contents](#)

[Go to WSC Home Page](#)

## COINS, STAMPS AND EXTRA ATTRACTION by Neal E. Danielson

Lester F. Phillis of Canton, Kansas located in McPherson County was an avid stamp collector, as I have purchased several philatelic items that were in his collection, such as pre-cancels, embossed stationary, etc. Lester was also a coin collector apparently as a commercial corner cover (Figure 1) addressed to him is from Hansan's Coin and Stamp Shop, located at 1326 Main St., Kansas City 6, MO. The cover is franked with two 3¢ Thomas Jefferson stamps (Scott #807 Presidential Issue) and tied to the cover with a footprint balloon cancel postmarked from Kansas City Mo. Jun 1 1946 and addressed to Lester F. Phillis. The cover contained a note on Hansan's Coin Shop stationary from John H Hansan stating "Enclosed are the coins as per your order, with exception of the 2 Flying Eagles Cents, am out of them, enclosed is 50¢ cash refund." Another return addressed envelope was also enclosed. Lester had also put his original cancelled check in the amount of \$5.15 in the cover.

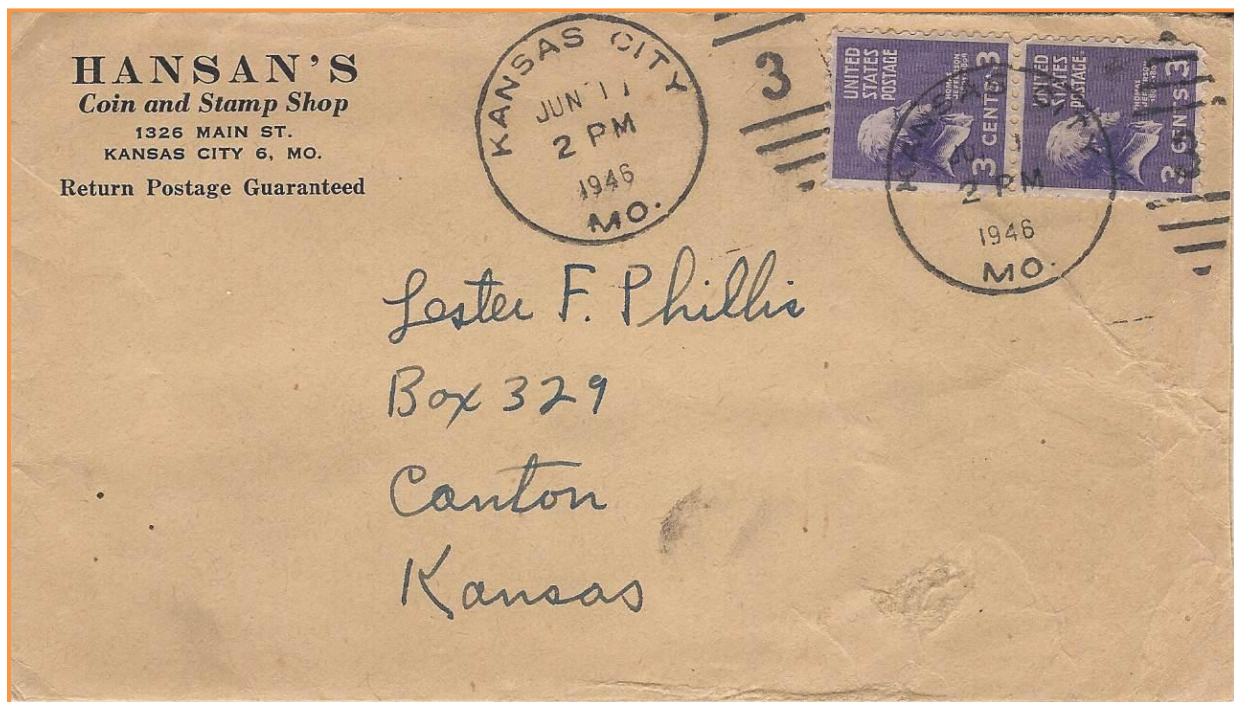


Figure 1-Commercial Corner Cover

While searching the web for information on Hansan's Coin and Stamp Shop and Lester F. Phillis I didn't find much on either one, except an interesting website from the University of Kansas Paleontological Contributions VERTEBRATA, Article 2, pages 1-14 "Vertebrate Fossils From Late Cenozoic Deposits of Central Kansas" by Claude W. Hibbard, University of Kansas Publications, March 20, 1952, printed by the State Printer, Topeka, Kansas, with this statement:

"A number of isolated horse teeth were found weathered out of the Delmore formation. Some are referred to the above form. Upper molars (KUMNH nos. 6871, 6874, 6875, 6915) were taken in the NEU sec. 31, T. 18 S., R. 1 W. Also referred to the *N. eurystyle* group are eight lower molars (KUMNH nos. 6917, 6918, 6921) from the WX sec. 31, T. 18 S., R. 1 W. A number of these teeth were found by **Lester Phillis**, of Canton, Kansas."

Apparently Lester was also interested in some form of archeology and lived in an area produced interesting fossils, which drew his attention away from Coins and Stamps on occasion. McPherson County (Figure 2) is located north of Sedgwick County with Harvey County in between. Canton is located on the eastern part of the County on the Atchison, Topeka & Santa Fe Railroad and Delmore is located north and west of Canton.



Figure 2--McPherson County

Reference:

University of Kansas, Scholar Works: [kuscholarworks.ku.edu/dspace/bitstream/.../paleo.article.011op.pdf](https://kuscholarworks.ku.edu/dspace/bitstream/.../paleo.article.011op.pdf)

[Return to February Contents](#)

[Go to WSC Home Page](#)