

Wichita Stamp Club Newsletter



Vol. 80, No. 10, October 2012

Neal E. Danielson
Editor



"Go Fly A Stamp"



Click on a link below in order to go directly to the article

[Fort Findlay](#)

A brief postal history of Findlay, Ohio

[Coon Hunting](#)

A little coon hunting nostalgia

[Don't Sweat the Small Stuff](#)

This small stuff comes to us via the great state of Maine

[Travel Kansas](#)

[The Purple Cow](#)

[Wichita Stamps and Coin Show 2012](#)

[Go to WSC Home Page](#)

FORT FINDLAY LOCAL POST by Neal E. Danielson

Findlay, Hancock County, Ohio dates back to the early 19th Century or late 18th Century. During the War of 1812 a local outpost was erected near the Blanchard River, under the command of Col. James Findlay (Figure 1), thus the Fort and subsequently the city was named in his honor. Col. Findlay initial task was to build a road to transport troops across the region. Findlay came to Ohio Territory at the age of 23 with his new wife and eventually settled in Cincinnati. He was a very successful merchant and helped to establish a new library for the city in 1802. He was elected Mayor of Cincinnati in 1805 and again in 1810. He served in the US Congress and was Major General of the States Militia's 1st Division. The area gained national attention in the mid-1880s when natural gas and oil was discovered nearby. The gas fields soon dried up but the oil has continued to bring income into the area.



Figure 1 Col. James Findlay

Findlay has some interesting historical events: the Ohio State Music Festival held in 1884 included a young cornet player, Warren G. Harding, and his *Citizens' Cornet Band* of Marion and they placed third in the competition—Harding would go on to become the 29th President of the United States; an American songwriter Tell Taylor wrote the standard, “*Down by the Old Mill Stream*” in 1908 while fishing along the Blanchard River, which was published in 1910; Findlay was the first to have touch tone telephone on November 1, 1960.



Figure 2 Fort Findlay Local Post Cover 1972

Another citizen of Findlay was responsible for establishing the “Fort Findlay Local Post” on 21st July 1962. The post was established and operated by H. H. Smith during the Findlay stamp exhibition, held on 21st and 22nd July, as part of the Findlay Sesquicentennial celebrations. The mail was transported from the exhibition station by car to the Findlay Post Office. The Local Post Label fee for each letter carried was 10 cents. The Local Post Labels were designed by Mr. Smith and a local printer, and the Marbee Art & Printing Company printed them in sheets of 16 on Dovac gummed white paper. The printing process was offset on a multilith press. Each sheet of 16 had a layout of four blocks of four, the perforation is by means of roulette and each sheet had two plate numbers. The design had a green lettering and frame with a brown colored fort in a triangular design with ‘Fort Findlay 1812’ under the fort design. The first delivery was of 2,476 labels and 663 first day covers serviced and cancellation by the shows special cancel “Ft. Findlay Stamp Club Sta. Findlay, OH” or a Findlay Post Office cancel. The post was re-opened for collectors on December 16th, 1962 with 2,064 labels overprinted with a wreath in green and a wreath within in red “5¢” and the post would remain operated to 1st January 1963 and 475 covers were carried on the first day and on Christmas Day. A total of 977 covers were serviced for the second issue.

The Local Post re-opened for the Findlay Stamp Club exhibition April 8 & 9, 1972. The Local Post design was similar to the first except a double circular brown color with a brown Fort Findlay 1812 within the circle. Surrounding the Fort in the outer circle was “Hancock Historical Museum Findlay, Hancock County, Ohio”. One of the Local Post First Day cover (Figure 2) is franked with an 8¢ Historic Preservation stamp and tied to the cover with a balloon four-bar cancel “Ft. Findlay Stamp Club Sta. Findlay, OH and postmarked Apr 8 1972. The cachet depicts the Hancock Historical Museum with “Preserving Our Heritage” printed above. The Local Post Label is tied to the cover with a hand stamp “Fort Findlay Local Post”

References:

The Courier.com <http://www.thecourier.com/index.asp> Fort Findlay Sutler Post

Local Post Collectors website: <http://www.localcollectorspost.org/id17.html>

[Return to October Contents](#)

[Go to WSC Home Page](#)

COON HUNTING by Neal E. Danielson

As a boy growing up on a farm in Oklahoma, just north of the North Canadian River we would lay out in the moonlight at night and listen to the drums across the river at the Indian Pow Wow. We would often listen to the hounds howling as they chased the coons up a tree and you knew when the animal was treed by the sound of the howls. We had many opportunities to go hunting for wild game as well by letting the dogs chase the jack rabbits and cotton tails, and even squirrels up a tree. So when I came across a cover at the recent Wichita Stamp Show I just had to purchase it (Figure 1). The cover was from an individual in Eudora, Kansas located in Douglas County, who mailed the cover from Lawrence, Kansas to a F. M. Sarver, Manager Dixie Hound Kennels, Inc. located in Herrick, Illinois. The cover is franked with a 3¢ George Washington stamp (Scott #730) and tied to the cover with a seven-wavy line circular date stamp postmarked from Lawrence, Kans. Jan 1 1936.

Herrick is a village in Shelby County, Illinois located in the southern portion of the State. . The Post Office was first established as Beck's Creek Post Office on March 20, 1860, the name being changed to New London on May 29, 1882. The name was changed to Herrick August 16, 1883. This village was once known far and wide as Dogtown, U.S.A. The dog business played a major role in the community from the early 1900s through the 1950s. It was a lucrative business and provides numerous jobs. Even the railroad parked boxcars at Herrick in order to handle the number of shipping crates, so they could just hook on and take off thus not holding up the train. Hounds were shipped to every state as well as to Canada, Mexico, Trinidad, Panama, South America and some European countries. The Post Office was kept busy handling the numerous advertising mail as well as incoming mail. The Dixie Hound Kennels, Inc. produced a catalogue on their Kennel providing valuable information to potential buyers (Figure 2). Some 40,000 postcards were mailed by one Kennel. Some mail was received by the Post Office simply addressed to "Dogtown, Illinois". The local veterinarian, Doctor O. G. Beck and his helpers were kept busy giving shots and examining the dogs before being shipped.

The Dixie Kennel was originally owned by "Hay Jim" Sarver and his two sons, Frank and Forrest. However Forrest dropped out of the hunting dog business, which left Frank who began in the hunting hound business in 1921, to operate the well known Dixie Hound Kennels, Inc., for many years. Other Kennels in and around Herrick were Kaskaskia Kennels, one of the first dog business, operated by Joe Adams in 1913; the Wildwood Kennels, operated by O. L. Horn; Crescent Hound Kennel and Herrick Hound Kennel, operated by Leland Burns, a former Wildwood employee; Echo Valley operated by Ralph Horn; Okaw Valley operated by Dewey Sarver; Maplewood operated by Randall Frailey; and Beck's Creek operated by Lee Price. At one time there were nine kennels operating at once in Herrick.



Figure 1 – Dixie Hunting Dog Cover

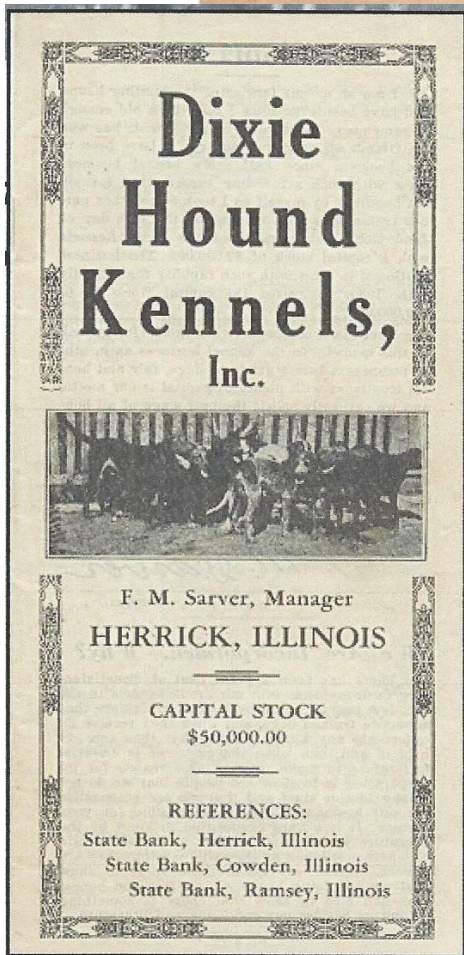


Figure 2--Dixie Hound Kennels Catalogue

References:

- Galvin Family: <http://www.galvinfamily.net/herrick/Dog.aspx>
- American Houndmen: <http://www.americanhoundsmen.com/dixiekennel.html>
- American Houndmen: <http://www.americanhoundsmen.com/index.html>

[Return to October Contents](#)

[Go to WSC Home Page](#)

DON'T SWEAT THE SMALL STUFF by Neal E. Danielson



Figure 1-Small Stuff from South St. George, ME

This is the 37th in a series of articles relating to small post cards and small covers so if you have any in your collection that you would like to share please let us know.

This small stuff comes by way of our northern State but from South St. George, Maine. This small stuff measures 4 5/8 inches by 2 5/8 inches and is franked with a 3¢ green George Washington (Scott #136) issued in March 1870 (Figure 1). A hand written '1877' is noted on the cover. The cancellation is from South St. George, ME with an Aug postmark and the stamp has a killer cancellation. South St. George is one of St. George's principal villages; others include Port Clyde, Tennant's Harbor, Martinsville, Glenmere and Clark's Island, all being located in Knox County.

St. George is located on a peninsula formed on the west by the St. George's River and the Atlantic Ocean on the east. St. George was incorporated in 1803 once it was set apart from Cushing. The area is noted for its immense flocks of wild ducks, geese and other waterfowl that inhabit the adjacent islands of the bay. Early on General Samuel Waldo negotiated with the Abenaki Indians not to settle immigrants in their prized hunting grounds, thus the peninsula remained uninhabited by settlers until after the French and Indian Wars in 1763. The Revolutionary War also slowed the settlement but by the 1780s the peninsula was rapidly increasing in settlements. Farmers grew potatoes, factories canned lobsters, clams and sardines, granite was quarried and shipped for construction nationally from Clark's Island, and shipbuilders produced three to four vessels annually, many for the coasting trade, exporting cordwood, lumber and fish. South St. George was the main ship-building village.

Port Clyde (Figure 2) with its Marshall Point Lighthouse was a major attraction for artist that frequented the peninsula. The Lighthouse caretaker is housed in the building to the left in the post card. Port Clyde and Tenants Harbor each have a marine railway. Tenants Harbor location lends itself to having a steamboat landing (Figure 3) and in this vicinity the Long Cove and the Clark's Island granite companies, and others, have their business.



Figure 2-Port Clyde-Marshall Point Lighthouse



Figure 3--Tenants Harbor Steamboat Landing

The small stuff cover was sent to an individual that live in Rockland, a city in Knox County, Maine. The Abenaki Indians referred to it as “Catawamteak” meaning ‘great landing place’. Rockland was well known for its lime business and its shipbuilding. In 1854 alone, the city built eleven ships, three brigs and four schooners along with twelve lime quarries and 125 lime kilns.

By 1886, shipbuilding was surpassed by the lime business. Nevertheless, Rockland had three or more shipyards, a marine railway, five sail lofts and two boat builders, requiring an area for launching the vessels they produced (Figure 4). The Rockland-Rockport Lime Company (Figure 5) was the major lime business.

The opening of the Knox and Lincoln Railroad in 1871 brought an influx of tourists and new businesses to Rockland as well as St. George and the rest of Maine.



Figure 4--Vessel launching c. 1900



Figure 5--Rockland-Rockport Lime Co. c. 1912

References:

St. George website: <http://history.rays-place.com/me/st-george-me.htm>

St. George website: http://stgeorgemaine.com/about_history.htm

Wikipedia Free Encyclopedia website: http://en.wikipedia.org/wiki/rockland,_maine

Wikipedia Free Encyclopedia website: http://en.wikipedia.org/wiki/tenants_harbor,_maine

[Return to October Contents](#)

[Go to WSC Home Page](#)

TRAVEL KANSAS—NORTH TO SOUTH—EAST TO WEST by Neal E. Danielson



Figure 1--Reno County Railroad Map 1899

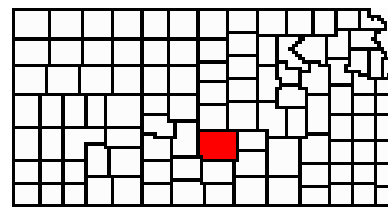


Figure 2--Reno County

Travel Kansas—Sylvia located in Reno County, Kansas (Figures 1 & 2), along the Atchison, Topeka and Santa Fe Railroad running west out of Hutchinson, the County Seat. Zenith was the name proposed for the town in Reno County, but Alfred A. Robinson, a railroad official, renamed it Sylvia for his daughter. Then he gave the name of Zenith to the next station to the west. The first boundaries of Reno County were established by the Legislature in 1868 with the final changes taking place in 1872. The first settler was Lewis M.; Thomas who staked his claim in Little River Township with numerous settlers that followed with most of them settling in the northern and eastern parts of the County along the Arkansas River. A bridge was constructed across the Arkansas River in 1872 thus opening up more land beyond the initial settlements. The area had an abundant growth of timber, mostly large cottonwood, but it was soon depleted once the settlers began using to construct their homes and businesses.

The first crops were planted in 1871 and the buffalo were still plentiful took most of the sod corn crop. It was also in 1871 that W. H. Caldwell built the first traveler's inn near the mouth of Cow Creek. The first Post Office was established at the inn and the settlement was called Queen Valley. It was anticipated that the Atchison, Topeka & Santa Fe Railroad would eventually cross the Arkansas River at the site. The first railroad built through the County was the Atchison, Topeka & Santa Fe (AT&SF) extending out of Newton in 1872 following the River northwest. The St. Louis & San Francisco northwest from Wichita crosses the northeast corner, and a line of the Missouri Pacific crosses southwest. The Chicago, Rock Island & Pacific enters in the northeast and crosses southwest into Pratt County. A line of the Missouri Pacific enters the southeast and crosses northwest along the River into Rice County. Two additional 'cut off' of the AT&SF turns west at Hutchinson to Kinsley and another south from Hutchinson through Kingman and Harper County.

The division of the County into townships took place in 1873 and eventually ended with 30 townships and by 1910 post offices was established in Abbyville, Arlington, Bernal, Buhler, Castleton, Darlow, Haven, Hutchinson, Longdon, Medora, Nickerson, Ost, Partridge, Plevna, Pretty Prairie, Sylvia, Turon and Yoder. A cover postmarked from Sylvia, Kansas (Figure 3) on Feb 23 1939 and franked with a 3¢ Thomas Jefferson (Scott #807) and tied to the cover with a seven-wavy line circular date stamp. The Post Office in Sylvia was first established as Zenith on May 12, 1876 and was changed to Sylvia on April 23,

1887 and is open today. The Linscheid family has a long history in Reno County and produced several that entered the Medical field, as noted on the cover. Tom Peters' hiring of Albert Alonzo Robinson was called "one of the best investments the Santa Fe ever made." Robinson, a Vermonter and a Michigan University graduate, had been working for the St. Joseph and Denver City Road before he was hired by Peters. Not until the Santa Fe reached New Mexico did his name get on the map, but Sylvia, the name of his wife and daughter, was given to this town southwest of Hutchinson.

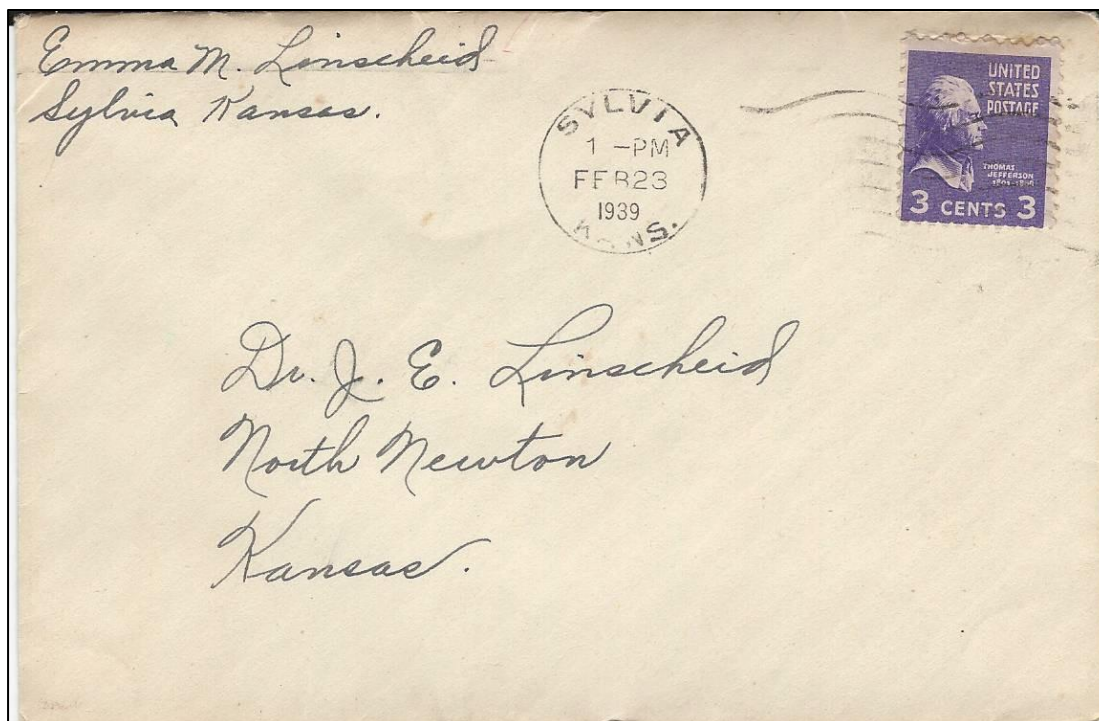


Figure 3- Cover Postmarked from Sylvia, Kansas

Reno County and its major population being in Hutchinson were the first to establish churches. The Methodist Episcopal Church being organized in July 1872 and a church structure built by the end of 1872 which was used by most of the denominations. The corner-stone for their edifice was laid in August 1874 and dedicated in February 1875 in a 32 x 60 feet brick structure. First Presbyterian Church was organized in July 1872, but did not build their church until later which was dedicated in June of 1873. The First Baptist Church was organized in December 1872 with services held in a building used for school and their church edifice, a frame structure 28 x 44 feet, was erected in the spring of 1878. The Universalist Parish was organized in 1881 and used the Baptist Church for services with plans for a future structure. The Catholic Church was organized in early 1872-3 with a large diocese and built a frame structure that was completed in 1879.



Figure 4--Sylvia School House ca 1906

The first school in Hutchinson was a select or subscription school held in a small frame building on Main Street in early 1872. A permanent brick school building was constructed and completed in April, 1874. The building was later remodeled to expand the number of class rooms as more and more students arrived in the town. The small community of Sylvania, Kansas constructed a nice frame structure for their school as shown in the 1906 photo (Figure 4). The postcard was obtained from the Wichita State University Libraries on line website.

0

References:

Wichita State University: <http://specialcollections.wichita.edu/kw/towns.asp?towns=Sylvia&County=Reno>

Skyways: <http://skyways.lib.ks.us/counties> Reno

[Return to October Contents](#)

[Go to WSC Home Page](#)

THE PURPLE COW by Neal E. Danielson

Leave it to someone living in Wisconsin, sometimes referred to as the dairy state, to come up with a cancellation depicting a Purple Cow. A Wisconsin dairyman by the name of Walter C. Brink initiated a Local Service in Brook Hill or Brook Hill Local Post. In essence the Brook Hill Farm, a Dairy Farm, near Genesee Depot, Wisconsin was started in 1902 when a wealthy business man by the name of Col. Howard Green purchased 230 acres of prime property in Waukesha, County, located near Genesee Depot. The farm was an operating one including a farmhouse, but Col. Green hired a prominent architect Andrew Eschweiler, of Milwaukee, to lay out plans for the construction of a new one built with native stone. This move by Green resulted in the farm being one of the pioneers in “sanitary milk.” The focus was on clean modern conditions, such as milking machines, glass pipelines for milk, etc., which were innovations at the time. Milk was transported by refrigerated railcars to Chicago and Milwaukee, for next day delivery, after going through health tests, such as checking for TB. Genesee Depot area had connections with railroads dating back to 1851. By 1917, the Pleasant Valley Farm, one of Brook Hill’s counterparts, was the largest certified milk dairy in the United States. The use of refrigerated railcars to transport milk eventually brought the concept of milk delivery directly to your door step in glass bottles (Figure 1).

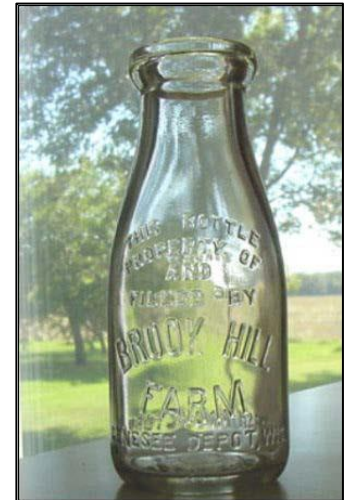


Figure 4-Milk Bottle-Brook Hill Farm

Now the rest of the story! Walter Brink was manager of the Brook Hill Farm by 1953, he was unhappy with the local post office in Genesee Depot. The post office closed early and many times outgoing mail would have to wait until the following day to be picked up. He therefore implemented a *private carriage service*, we collectors called this a *local post*. This resulted in taking the mail by private carrier to one of three other local Wisconsin cities; these cities had late pickup of the mail, so that the mail could be expedited. Now Mr. Brink was a dairy farmer, not a philatelist, so his focus was on expediting the mail not what a philatelist would set up for a local post. I’m sure he was taken back somewhat by all the publicity he received in philatelic journals and newspapers and not understanding all the fuss. He didn’t make any major effort to grant the collectors wish for certain place blocks, etc., after all he was a dairy farmer and the cows had to be milked, some 900 of them at one point in time.

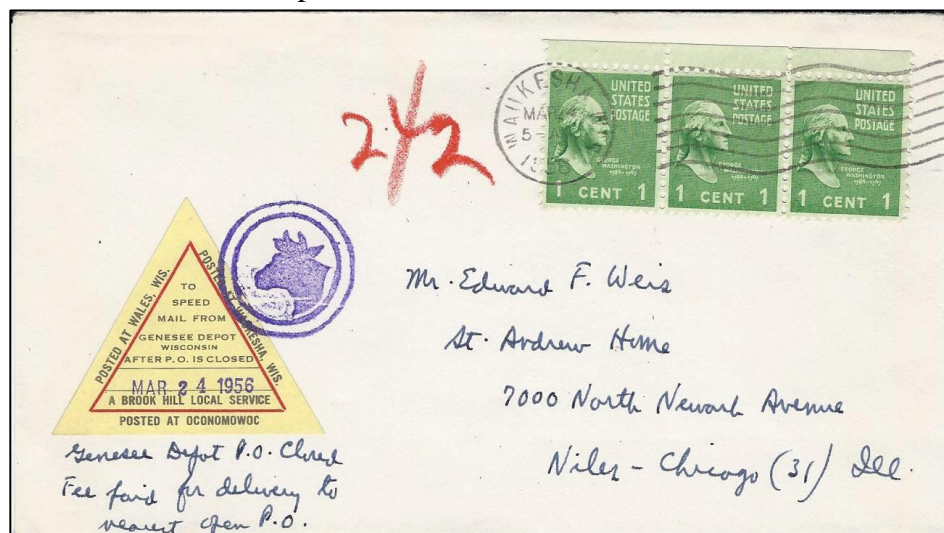


Figure 2—Brook Hill Farm Local Post

When Mr. Brink started “A Brook Hill Local Service” he chose a triangular design with a red inner triangle with the three cities printed on the sides of the triangle – “Posted at Wales, Wis.” on the left; “Posted at Waukesha, Wis.” on the right; and “Posted at Oconomowoc” on the bottom. In the center of the triangle is noted “To speed mail from Genesee Depot Wisconsin after P. O. is closed” with space provide for a date stamp and at the bottom “A Brook Hill Local Service” (Figure 2). This cover was sent by Walter C. Brink as noted on the back with a purple hand stamp (Figure 3),

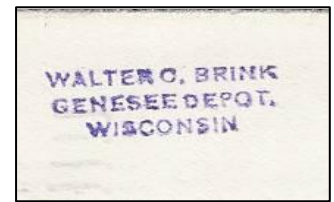


Figure 3--Cover Sender

and is franked with three 1¢ George Washington stamps (Scott #804) and tied to the cover with a seven-wavy line circular-date-stamp of Waukesha, Wis on Mar 24 1956. The local service triangle stamp is tied to the cover with a double circle Purple Cow cancel on the right side of the triangle denoting “Posted at Waukesha, Wis.” The Purple Cow cancel would have appeared on one of the other sides of the triangle if mailed from that city. Mr. Brink has noted under the Local Service stamp “Genesee Depot P. O. Closed Fee paid for delivery to nearest open P.O.”. The cover was mailed to a Mr. Edward F. Weis in Niles-Chicago (31) Ill. The fee for this service was 10¢, which would appear on later Local Service stamps. The Village of Niles is adjacent to Chicago to the South, along Milwaukee Avenue. First settled in 1827 and incorporated on August 24, 1899. Along with Skokie, Illinois and other suburbs, Niles is partly in Niles Township, for which it draws its name. This was not the first time the Purple Cow cancel was used, as the Genesee Depot post office used one back in the 1920’s-1930 as a ‘fancy’ postmark, primarily as killers on stamps used on registered mail.

References:

Brook Hill Local Post: <http://www.qsl.net/kg0yh/BrookHill.htm>

Brook Hill Farm History: <http://www.qsl.net/kg0yh/brookhist.htm>

[Return to October Contents](#)

[Go to WSC Home Page](#)

THE WICHITA SHOW 2012

As our President **Bernd Frazier** stated in his message “Your help is what makes it go and sets us apart from many other stamp shows.” This goes without saying that helping set up on Friday afternoon August 17th by members of the Club provided timely opportunity for the dealers to set up their booths. Thanks go to the following: **Ralph Lott, J R VanCleave, Bernd Frazier, Bob Haines, Marc Monasmith, Carrol Littlejohn, Neal Danielson, Pat Eshelman and Ted Eshelman**. Members also assisted the dealers in transporting their goods from vehicles to their booths. **Bernd Frazier, J R VanCleave and Ralph Lott** assisted the dealers on Saturday morning August 18th. The following members staffed the Front Welcoming Table on Saturday August 18th **Neal Danielson, Bob Haines, Doug Dees, Bob Cairns, Marc Monasmith, and Jeff Lough** and staffing the Wichita Stamp Club Table on August 18th were: **Bernd Frazier, Bob Haines, Neal Danielson and Deana Walter**. On Sunday August 19th the following members staffed the Front Welcoming Table: **Bob Haines, Ted Eshelman, Pat Eshelman, Doug Dees, and Neal Danielson** and staffing the Wichita Stamp Club Table on August 19th were: **Ted Eshelman, Pat Eshelman, Bob Haines, Bernd Frazier and Neal Danielson**. At the close of the Show on Sunday afternoon the following members helped tear down the tables and chairs: **Ralph Lott, Bernd Frazier, Ted Eshelman, Pat Eshelman, Marc Monasmith, Doug Dees, Bob Haines, Tom Hankins, and Bob Cairns**.

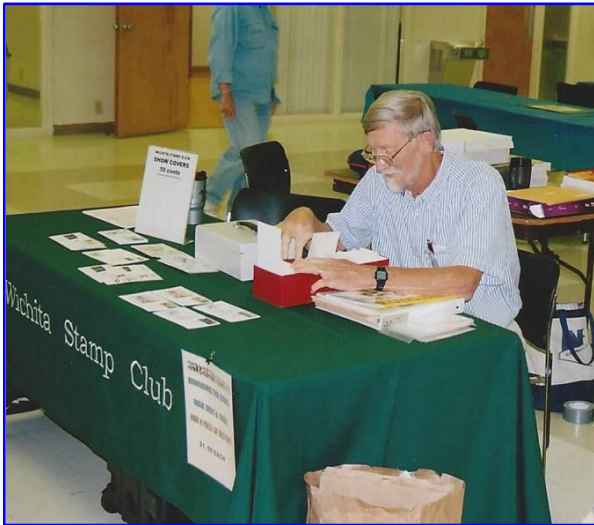


Figure 1-President Frazier Staffing Club Table

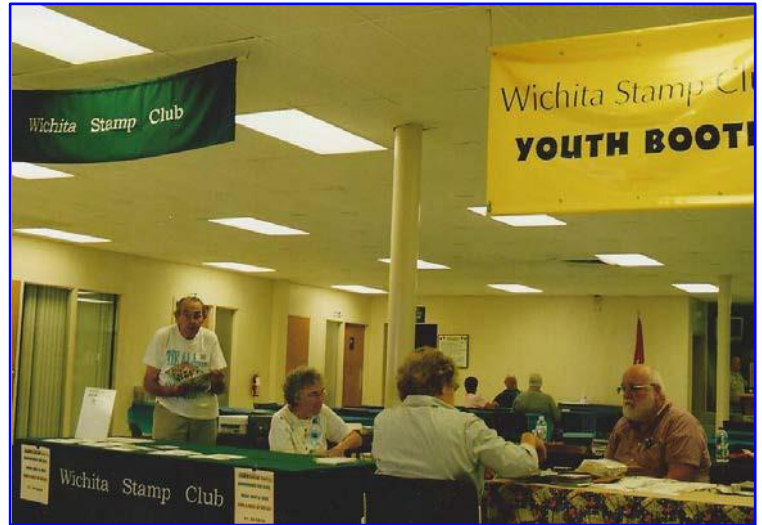


Figure 2--Ted & Pat Eshelman - Bob & Pat Hirschmann

One of the popular features of the Wichita Coin & Stamp Show is the Concession. This year the Boy Scout Troop 895 from Haysville, Kansas used the Event as a Fundraiser for the Troop. Coffee is readily available, as well as other soft drinks along with a menu for breakfast items and lunch items. The Scouts will visit the dealers as well as attendees out on the floor intermittently so dealers do not have to leave their booth and/or customers to get something to eat and drink.



Figure 3--Scout Troop 895 Haysville



Figure 4--Scouts working the floor

Bernd Frazier, Exhibit Coordinator for the Wichita Show provided a well rounded philatelic exhibit with several Club Members providing a frame or two. The Club has 16 frames capable of holding 16 exhibit sheets per frame. The following was provided for those in attendance at the Show to view:

- Australia (1 frame), presented by **Bernd Frazier**
- UPU (1 frame), presented by **Bernd Frazier**
- United States Space Stamps (1 frame), presented by **Ralph Lott**
- Kansas --- to 1861 (1 frame), presented by **Ralph Lott**
- Postal History of Hawaii (2 frames), presented by **Ralph Lott**
- Defense Issues of 1940 (1 frame), presented by **Ralph Lott**
- Type I & Type II 1¢ of 1851 – 1861 (1 frame), presented by **Ralph Lott**
- Kansas Upland Game Bird Stamps (1 frame), presented by **Neal Danielson**
- 4¢ Kansas Statehood Issue of 1961 (1 frame), presented by **Tom Hankins**
- Commemorative Stamp Club (1 frame), presented by **Tom Hankins**
- Revolution Martyrs of the KUOMINTANG (5 frames), presented by Guest Exhibitor **Bob Burney**



Figure 5--Exhibits



Figure 6--Exhibits

The Wichita Coin & Stamp Show is one of major events each year and one that provides a great deal of support for our Club. This year **Ralph Lott** our Show Coordinator engaged the following dealers providing our attendees an opportunity to add to their collections as well as some attendees were able to sell some of their collections.

Wendell Leavitt Coins
 Oakwood Rare Coins
 Tiger Collectibles – Scott Couch
 Wes Keele Coins
 Pop’s Collectibles – David Smies
 Yi Li Currency
 John Downey Coins
 Dave Sevart Coins
 Joack Byars Coins
 Salt City Coins
 Rolla B. Killion Stamps
 Cherokee Coins

Phil’s Coins
 Brad Smith Coins
 Chris Warner Stamps
 Rex Chrisco Stamps*
 Viking Philatelic
 Auddie Neisler Coins
 Terry Sneep Coins
 Oklahoma Stamps
 Damian Johnson Stamps
 George Watkins Stamps
 Bob Reed Coins

Kent Laubhan Coins
 Bill Burdick Stamps
 C & D Coins
 Joel Bieber Coins
 Lynn Davidson-Stroh
 Jim Merbs Coins
 W M Busby Coins
 Main Street Philatelics
 Jamie Schwartz Stamps*
 Louis Hartness Coins
 Louis Forster Stamps*

*Members of the Wichita Stamp Club



Figure 7--Finding that special cover/postcard

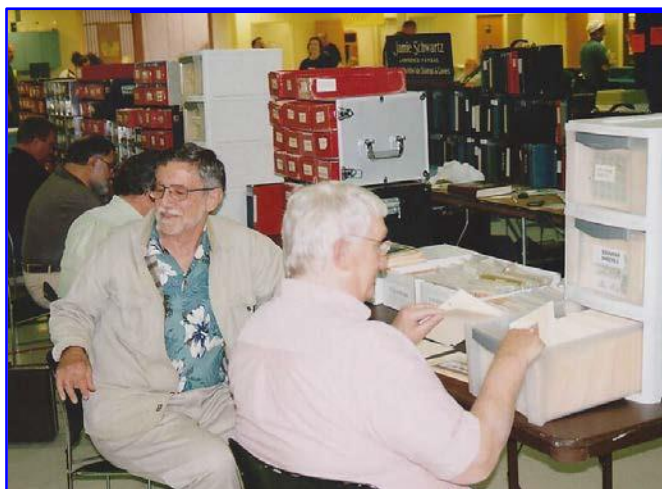


Figure 8--Dealers bonding



Figure 9--Stamps and more stamps



Figure 10--Members bonding



Figure 11--Looking for Opportunity

[Return to October Contents](#)

[Go to WSC Home Page](#)