

# Wichita Stamp Club Newsletter



Vol. 77, No. 9, September 2009

Click on any of the links below to go directly to the article

## [Travel Kansas](#)

An interesting article on Cave, Kansas

## [County Seats](#)

A pair of post cards mailed between county seats

## [Log Cabin](#)

A cover from Log Cabin, California franked with Kansas and Nebraska overprints

## [Semiotics](#)

A dissertation on the role of symbols in stamp design

## [Don't Sweat the Small Stuff](#)

Another presentation of the smallest of covers

## [Timber!](#)

An Article about the Timber Carnival in Oregon

**TRAVEL KANSAS—EAST TO WEST—NORTH TO SOUTH** by Neal E. Danielson

**Travel Kansas—Cave, Kansas** was located in Gray County (Figures 1 & 2). Gray County was created March 2, 1881, absorbing the County of Foote and the south half of Buffalo County. The north half of Buffalo County was ceded to Lane County (Foote and Buffalo County eventually ceased to exist.) The county was officially organized July 20, 1887. The county was named in honor of Alfred Gray, who at the time of his death (January 23, 1880) was the Secretary of the State Board of Agriculture.

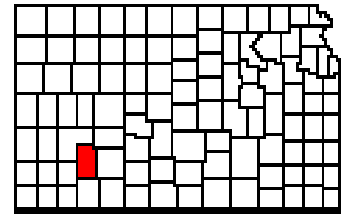


Figure 1  
Gray County, Kansas

Cimarron, settled in 1878, is the County Seat, got its name as the starting point at one time of the shorter Cimarron or dry route of the Santa Fe Trail, near Ingalls. Here is where the Trail divided, with one branch heading directly southwest, the other following the Arkansas River to Bent's Fort near what is now La Junta, Colorado, then south over Raton Pass. William Becknell first traveled the dry route with a pack train via the Cimarron River in 1822, carrying trade goods to Mexico, newly freed from Spain.

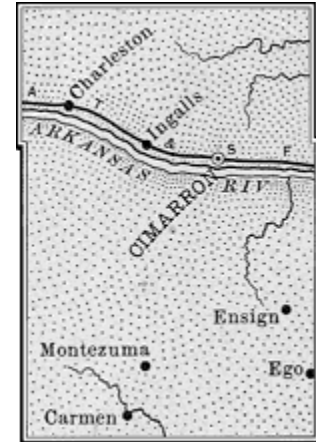


Figure 2  
Gray County  
Railroad Map ca 1899

The Arkansas River has carved a huge valley across the county. Inside this valley, the landscape is rugged, but by going north or south you climb out onto flat plains. The river bed is sandy and lined with cottonwoods and at one time was filled with water, but today it is often dry. Usually waterless and subject to Indian attacks, the 60 miles of trackless prairie between the Arkansas and the Cimarron Rivers was called by the Mexicans *Jornada Del Muerte*, or Journey of Death.

The Atchison, Topeka and Santa Fe Railroad crosses the county from east to west traveling along the north side of the Arkansas River.

Ever wonder how the “Arkansas River” got its name? Some say that it got its name due to the way the river flows out of Colorado almost in a straight line, then makes a northeasterly direction up to Great Bend and then turns and makes a southeasterly flow to Wichita and on southward to Arkansas City and on into Oklahoma. The flow of the river creates an “Arc”, thus adding the “Ar” to “Kansas” to get “Ar-Kansas”. Then you have Arkansans that pronounce it “Ar-kan-saw” and that’s okay as they are from a different state that was actually entered the Union (1836) before Kansas (1861).

One of the early settlements in Gray County was the village of Cave. It acquired a post office on January 19, 1901, but was closed on September 30, 1914. Figure 3 is a ‘Happy New Year’ post card sent from a resident of Cave to another individual in Cave. However, no 2¢ stamp was affixed to the post card, but the postal clerk noted ‘2’ as postage due, however it did receive a four-bar CDS from Cave, Kans. on Dec 31 1910.

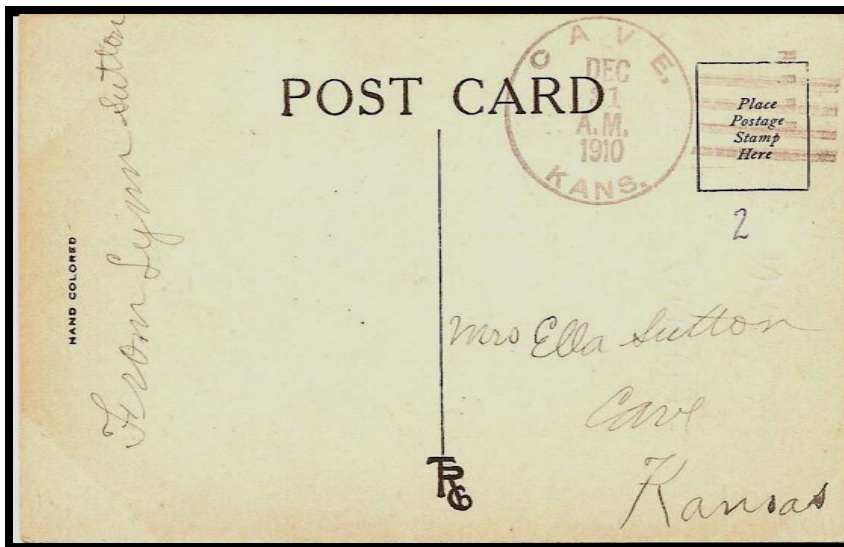
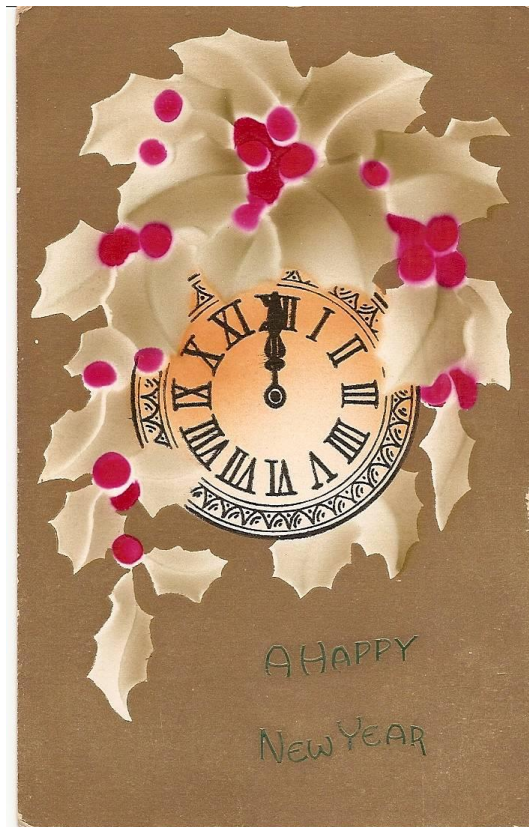


Figure 3  
Post Card with Post Office Cancel from Cave, Kansas, 1914

Reference: Blue Skyways website: <http://skyways.lib.ks.us/>

## COUNTY SEATS DUPLICATED by Neal Danielson

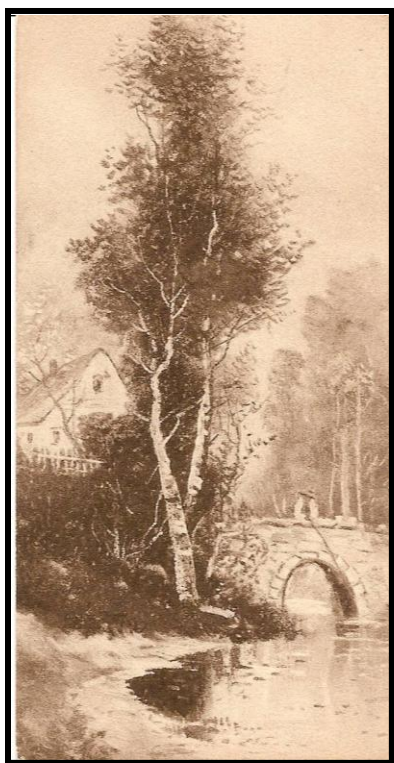


Figure 1  
Country Hamlet and Bridge

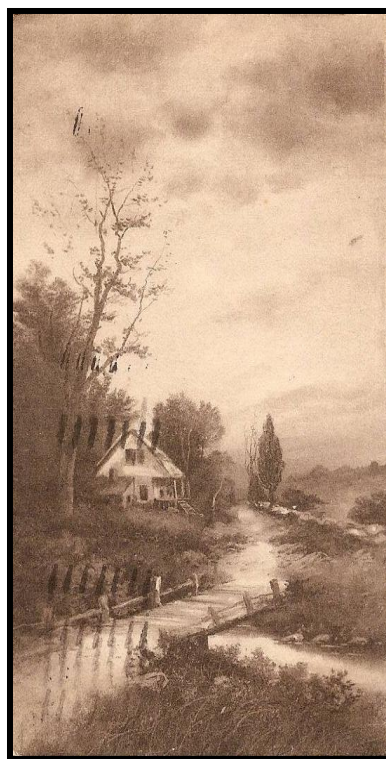


Figure 2  
Country Hamlet and Man Fishing from  
Bridge

The two post cards measure 5 ½ inches by 2 ¾ inches and both are printed in ‘brown tone’. I personally like ‘brown tone’ post cards and I have several in my collection. The art work on Figure 1 is a country hamlet and bridge across a stream, while the art work in Figure 2 depicts a country hamlet with a man fishing off a rock bridge across a stream. These types of post cards were used throughout the country in the late 19<sup>th</sup> and early 20<sup>th</sup> Century.

The post card in Figure 1 is postmarked Sep 25 1911 from Butler, MO and sent to an individual in Wellington, Kansas. The post card is franked with a 1¢ green Benjamin Franklin stamp (Scott # 331) issued Dec. 1908 (Figure 3). The stamp is tied to the cover with a circular date stamp with wavy lines.

Butler is a city in Bates County, Missouri and is the County Seat. Wellington is a city in Sumner County, Kansas and is the County Seat.

The post card in Figure 2 is postmarked Mar 9 1913 from Ashland Kans., and sent to an individual in Kingman, Kansas. The post card is franked with a 1¢ green George Washington stamp (Scott # 405) issued Feb 1912 (Figure 4). The stamp is tied to the cover with a circular date stamp and a killer shoe cancel.

Ashland is a city in Clark County, Kansas and is the County Seat. Kingman is a city in Kingman County, Kansas and is the County Seat. The Post Card was produced by the Pink Perfection company and is number 8 in a series.

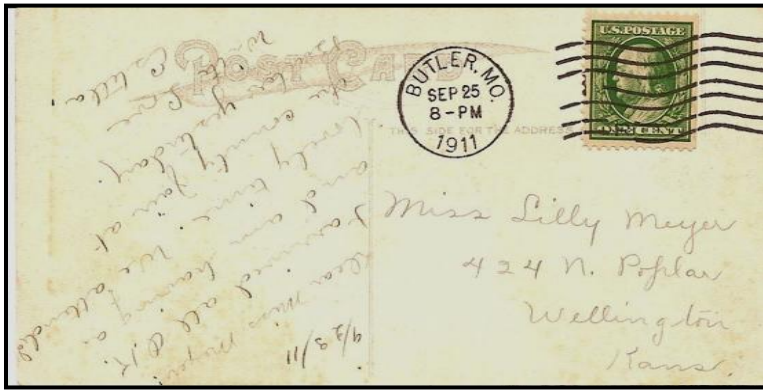


Figure 3  
 Post Card from Butler, MO to Wellington, Kans.



Figure 4  
 Post Card from Ashland Kans. to Kingman, Kans.

Reference: Wikipedia Free Encyclopedia website: Butler, MO; Wellington, KS; Ashland, KS; and Kingman, KS.

**LOG CABIN** by Neal E. Danielson



When one hears or sees the words “log cabin”, they usually think of President Abraham Lincoln. In fact the U. S. Mint has now issued a new 1¢ copper coin depicting Lincoln and on the reverse the log cabin in which Abe was born. Well there is another Log Cabin and it is located in California on highway 49 near Old Marysville Rd. and Log Cabin Rd. Shown is a fancy cancel from Log Cabin, California franked with a 10¢ Kans. overprint (Scott # 668); a 5¢ Nebr. overprint (Scott #674); and a 2¢ Nebr. overprint (Scott #671) stamp, tied to the cover with two Log Cabin cancellations. The cover is registered sent to Council Bluffs, Iowa. The 17¢ postage paid for the domestic letter rate and registered fee.

The back of the cover shows two four-bar circular date stamps from LOG CABIN, Calif. Postmarked JUN 17, 1931 and a double circle received postmark from Council Bluffs, Iowa on Jun 21, 1931.

Reference:  
Google: Log Cabin, CA – Google maps

## NOTES ON THE SEMIOTICS OF JAPANESE-LATIN AMERICAN PHILATELY by Jeff Lough

During the late 60's and into the 70's intellectuals in linguistics, literary and film criticism, history, anthropology, psychology, and cybernetics spent a great deal of effort developing and explaining "structuralism." This important intellectual movement had Thomas Kuhn's *The Structure of Scientific Revolutions* and the work of Swiss developmental psychologist Jean Piaget as its formulative foundations. Structuralism focused on explaining phenomena as having some aspects that changed, some that did not change and some aspects that were an interaction of the other two which in turn created an underlying unclear structure that was similar from one circumstance to another. The great French anthropologist, Claude Levi-Strauss (See Belgium Scott #1781-f) was an important structuralist. Along the same lines the French semiologist, Roland Barthes (See Belgium Scott #1781-m) expanded on structuralism as a way to look at communications based on various Russian, European, and American linguistic and psychological predecessors. The American behaviorist, Charles Morris, tried to provide a technical, non-intuitive approach to this type of study of communication. Morris explained that when we referred to something we used a "sign" which was separate from the actual object that we were talking about, that the same sign could be used to indicate different objects and that the object being spoken about could have different signs.



Scott 1781f

Scott 1781m

Recently postage stamps have been looked upon as "signs." Jack Child and David Scott have both written books about the subject. Child begins his discussions of Latin American politics on stamps with the view that a sign can be an "index," an "icon," or a "symbol." An index is a "pointer" taking someone somewhere else. An icon is a graphic representation such as a picture, a design, or a photograph. "It can be observed for its own aesthetic sake or...analyzed to see what the message of the picture is." A symbol is a sign in which a few "...elements (of an icon) stand for something else."

A variety of signs have been used as part of the designs of the 27 stamps issued by Japan and several Latin American countries to celebrate several aspects of their relationships. Japan issued an early stamp (Japan Scott #652, cropped from a pane of 20 stamps) using the Brazilian and Japanese flags and a stylized cartographic representation of Brazil to celebrate the fiftieth anniversary of the immigration of Japanese to Brazil. Note the ship, the Kasato Maru, at the bottom of the stamp symbolizing immigration to Brazil. The flags could be seen as indices pointing to the nations of Brazil and Japan. The stylized map of Brazil could be seen as a symbol of a map of Brazil and a symbol of Brazil.



Scott 652



Brazil Scott #2138 on Commemorative Cover

Thirty years later Brazil celebrated the 80<sup>th</sup> anniversary of Japanese immigration to Brazil with a stamp using the flags as well as portraits of three Japanese immigrants that serve as an iconic representation (Brazil Scott #2138, on Commemorative Cover).

A 2008 2-stamp commemorative sheet shows the Kasato Maru, the ship that first brought the Japanese immigrants, with a map of Brazil in the background serving as a sign indicating “immigration”. The right-hand shows an origami figure folded in the shape of a crane. A Japanese legend promises that anyone who folds a thousand origami cranes will be granted a wish by a crane.

The “Rising Sun” on Japan’s flag symbolizes Japan and the Auguste Comte Positivist motto “Ordem e Progresso”/ “Order and Progress” found on the Brazilian flag symbolizes Brazil, (See right stamp.)



Brazil Souvenir Sheet

Left  
Ship and Map

Right  
Brazil Flag UL and Japan Flag LR

Icons which  
symbols  
Japan and the

are also  
representing  
Japanese

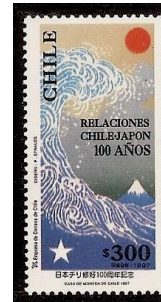
culture and people have included a characteristic pagoda-style Japanese building (Bolivia Scott #1059), a sculptural depiction of the Buddha (Cuba Scott #3948, cherry blossoms (Uruguay Scott #1923), a stylized version of one of the most famous of Japanese art works (Chile Scott #1217) by the great print maker and artist Hokusai. The Argentinean stamp (Argentina Scott #2014) has a feature that is both a symbol of “friendship / amistad” and a stylized icon of a great Japanese cultural artifact, the famous bridge in Shinsen Garden in Kyoto, Japan.



Bolivia 1059      Cuba 3948



Uruguay 1923



Chile 1217



Argentina 2014

Japanese stamps, in turn, have depicted Latin American icons in order to celebrate the cultures of that region. For example one stamp (Japan Scott #2675) shows a Quechua dancer in elaborate garb, thusly celebrating the Bolivian descendants of the Incas. A stamp celebrating friendship between Argentina and Japan (Japan Scott #2650) shows an Argentinean couple dancing the Tango. An illustration of the Mexican national Coat of Arms (Japan Scott #1811) is the central figure of a Japanese stamp celebrating Mexican - Japanese friendship. A stamp (Japan Scott #2672) celebrating Japanese immigration to Peru uses depictions of the Andes Mountains and an alpaca or a llama to symbolize Peru. A recent Colombian stamp uses more abstract indices to celebrate Colombian-Japanese friendship. On the Colombian stamp we find key symbols taken from the Japanese and Colombian flags.



2675      2650



1811



2672



Colombia

Both abstract symbols and icons are used in a 1995 Japanese set celebrating 100 years of Japanese-Brazilian friendship (Japan Scott #'s 2455 – 2456). These two stamps are referencing Brazilian-Japanese friendship with the number “100” which is stylized using the “Rising Sun” and a round depiction of the Brazilian flag. On these two stamps blossoming Brazilian and Japanese flowers and soccer players symbolize interests that are common to both nations and peoples.



2455      2456



The Japanese sheet of ten 80 Yen stamps celebrating Japanese-Brazilian interactions that was released in 2008; it depicts both icons and more subtle symbols of Brazil. 2008 marked the 100<sup>th</sup> anniversary of Japanese emigration to Brazil and had been designated as the Japan-Brazil Exchange Year. An initial group of about 800 Japanese immigrants arrived in Brazil as potential farm workers in 1908 on the ship Kasato Maru. The first stamp is a copy of the visa stamp used by those first emigrants. To its right is a stamp illustrating coffee beans, of which Brazil is the world's largest producer. Below the cluster of beans on that stamp is a picture of the Kasato Maru. The next row of stamps shows the iconic 125 foot tall "Christ the Redeemer" statue that overlooks Rio de Janeiro as well as Sugarloaf Mountain. The next row shows the Iguacu Falls that span about three miles on the Brazilian-Argentinean border. The following row of stamps depicts a historical district found in the city of Salvador, in northeast Brazil. Salvador is renowned for its African-derived culture and huge Carnival Celebration on Fat Tuesday. The left hand stamp in the final row of stamps depicts a pair of Blue Morpho butterflies that can have a wingspan of six inches, are metallic iridescent blue, and can change color when viewed from different angles. Indigenous people have used the butterfly wings to embellish their ceremonial masks. The stamp in the lower right of the souvenir sheet has a toucan famous for its large beak and loud chattering.

It is somewhat worthy of note that a recent President of Peru was one of completely Japanese blood and that the economy of Brazil has been controlled by the 4 ½ million Japanese of southern Brazil since the 1950's. Certainly as Asian countries and societies continue to replace U.S. influence in Latin America we must be aware of the contrasts and interrelationships between these two wonderful areas of the world.

Sources:

- \* Casey, Ron. "National New Issues. 2008.06.18. Japan-Brazil Exchange Year." *Japanese Philately*. 64(2): 109-114, April, 2009.
- \* Child, Jack. *Miniature Messages: The Semiotics and Politics of Latin American Postage Stamps*, Duke University Press, 2008.
- \* Scott, David H. T. *European Stamp Designs: A Semiotics Approach to Designing Messages*, London: Academy Editions.

**DON'T SWEAT THE SMALL STUFF** submitted by **Dan Walter** and **Neal Danielson**

To members of the Wichita Stamp Club: This is the seventh in a series of articles relating to small post cards and small covers, was submitted by Dan Walter, so if you have any in your collection that you would like to share please let me know. I will work out plans to obtain a copy so an article can be put together or better still you can write the 'short' article yourself and submit. The response has been very good so far.

This Small Stuff measures 4 1/8 inch by 2 13/16 inch (2 7/8 inch uncropped) along with a study in attempting to decipher the place of origin. The cover is postmarked July 31, 1907 somewhere in France. The cover is a pre-printed envelope with a #113 type 5 centime green French stamp-Liberty, Equality, Fraternity. The cover was sent to a Monsieur Winter in care of the Armory Building in Washington, D. C. North America.

The cover was sent short paid at 5 centimes, so an additional 10 centimes was required to send from France to the U.S. and not having paid the required fee an additional 10 centimes was charge, as can be seen on the reverse side of the cover (Scott #162 red).



The cover arrived in Washington, D.C. on August 12, 1907 (see cancellation on cover reverse). The cover was then opened by censors at the Armory on August 13, 1907.

Whatever the contents of the cover was it received a response on Sept 19 and was numbered 234712 as seen in the hand written notation on the cover reverse.

If you can decipher the place of origin please let us know. Thanks.

**TIMBER!!!!** by Neal E. Danielson

When the Oregon Trail was established, “Oregon Fever” broke out around 1840 when the Donation Land Claim Act was passed by the legislature (something like a stimulus package) whereby white male citizens over the age of 18 could receive 320 acres of land as a single person or 640 acres of land if he was married. This resulted in farmer’s settling in “Prarie” until gold was discovered south of their settlements so the men took off for the gold rush leaving women, children and the elderly to tend to the farming. In 1847 the Smead claim was purchased for \$400 and town lots were laid out on the east bank of the Willamette River, just below the mouth of the Calapooia River. The settlement (town) was named Albany, after Walter and Thomas Monteith, the owner’s home state capital, Albany, New York. The first frame house was built in 1849 by the Monteiths. On January 8, 1850, Albany’s first post office was established, with John Burkhart as the first Postmaster. Albany is the County Seat of Linn County, although its city limits extend into Benton County. Albany is located in the northwest edge of the County (Figure 1).



Figure 1

The city of Albany, Oregon continued to progress, even to the point of the establishment of Albany College by 1869. In 1941 Albany College became Lewis & Clark College and is the largest private college in Oregon. Another event became a reality in 1941 that would put Albany in the spotlight. Founded in 1941, the World Championship Timber Carnival reigned over the valley area over the Fourth of July holiday for decades. The natural amphitheater at Waverly Lake offered World Championship competition in Log Chopping, Bucking, Speed Climbing, Tapping, Birling and Jousting. This fascinating celebration is by far the largest attraction of its kind and draws contestants from throughout the United States and Canada, who compete for over \$3,500 in prizes. Besides logging competition many other events were featured each year.



Figure 2  
Timber Carnival Event Cover, Albany, Oregon 1957

Figure 2 is a Timber Carnival Event Cover celebrating the World Championship event held July 1 – 4, 1957 held in Albany, Oregon. The Event Cover is franked with a 3¢ Oregon Territorial Issue of August 14, 1948, depicting John McLoughlin, Jason Lee and Wagon on The Oregon Trail. The stamp is tied to the cover with a slogan cancellation “World Championship Timber Carnival July 2-3-4” with a circular-date-stamp postmarked Albany Oregon Jul 4 1957. The cachet on the cover depicts a one-man birling or logrolling as practiced by lumberjacks. The Event Cover was sent to an individual in Sewickley, Pennsylvania.

Birling is a one-man or two-man competition as demonstrated in Figure 3. Birling or logrolling has been a favorite sport or competition among lumberjacks for centuries. It's a game of skill, especially among lumberjacks in which two competitors try to balance on a floating log while spinning it with their feet. Jousting, where each competitor has a long balancing pole that is used to try and knock the other person off the log, is also performed in birling.

Another popular event at the Timber Carnival is the Bucking (no horse is involved in the event). The competition can be both a one-man using a Bucking Saw to saw through a large diameter pine log as demonstrated in Figure 4, or a two-man event using a two man Bucking Saw or double buck.

Axe throwing competition required the precision of a dart thrower in throwing a five pound, double-bitted ax. This is demonstrated in Figure 5.

One of the most popular events in any Timber Carnival or Lumberjack competition is Speed Climbing. The climber fastens iron climbing hooks to his leg and boot, along with a harness and ropes around his waist as demonstrated in Figure 6. The event is a timed endeavor to make it to the top and back down. It may be a 60 foot tall pine or it may even be a 100 foot. The climber walks his way up the pole to the top and then plummets down to the bottom. Another major event was Log Chopping.



Figure 3  
Birling



Figure 4  
Bucking



Figure 3  
Axe Throwing



Figure 3  
Speed Climbing

The Albany, Oregon, Timber Carnival took a hiatus for eight years (1999-2007), but returned in 2008 with a scaled down event which they are hoping will bring back the old enthusiasm for the Carnival. Colleges now have woodsmen teams or forestry clubs, which compete regionally, nationally, and internationally. Lumberjack World Championships have been held annually in Hayward, Wisconsin since 1960. The most noted Lumberjack is a nationally known stereotype—Paul Bunion and his Ox “Blue”. The U.S Postal Service issued a se-tenant of four Folk Heroes, July 11, 1996 which included a stamp honoring Paul Bunion (Scott #3084) as shown in Figure 7. The se-tenant of four also included Mighty Casey, John Henry, and Pecos Bill.



Figure 7  
3084

References:  
Wikipedia Free Encyclopedia—Albany, Oregon; Lumberjacks;  
Timber Carnival, Albany, Oregon